

PREPARED BY
DAVID P. LINDLEY
OF
CAULFIELD and WHEELER, INC.
ENGINEERS - PLANNERS - SURVEYORS
7301-A WEST PALMETTO PARK ROAD, SUITE 100A
BOCA RATON, FLORIDA 33433 - (407)392-1991
SEPTEMBER - 1996

GARDENS IN THE GROVE REPLAT

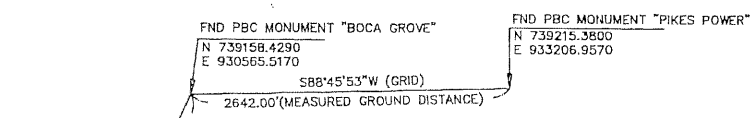
0209-010

52

PART OF THE BOCA GROVE PLANTATION, P.U.D.
BEING A REPLAT OF A PORTION OF PARCEL "B", "GARDENS IN THE GROVE",
AS RECORDED IN PLAT BOOK 46, PAGES 62 THROUGH 63 OF THE PUBLIC
RECORDS OF PALM BEACH COUNTY, FLORIDA, LYING IN SECTION 21, TOWNSHIP 47 SOUTH, RANGE 42 EAST,
PALM BEACH COUNTY, FLORIDA

STATE OF FLORIDA
COUNTY OF PALM BEACH
THIS PLAT WAS FILED FOR
RECORD AT _____ M.
THIS _____ DAY OF _____
A.D. 199____ AND DULY RECORDED
IN PLAT BOOK _____ ON
PAGES _____ AND _____
DOROTHY H. WILKEN
CLERK CIRCUIT COURT
BY: _____
DEPUTY CLERK

SHEET 4 OF 4



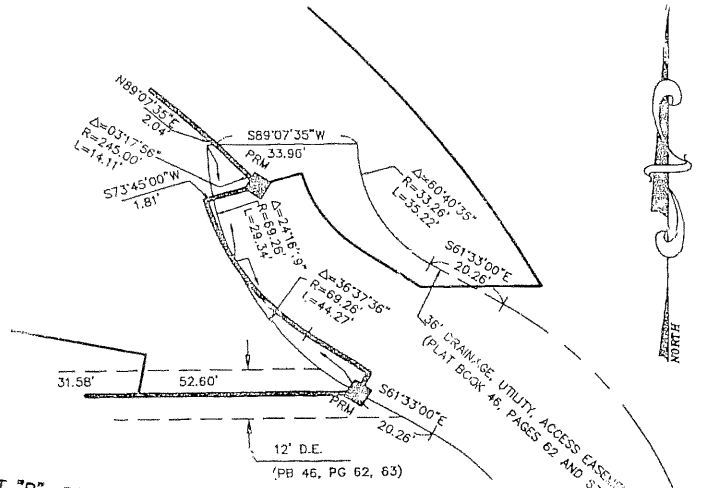
NOTES
COORDINATES, BEARINGS AND DISTANCES

COORDINATES SHOWN ARE GRID
DATUM = NAD 83 1990 ADJUSTMENT
ZONE = FLORIDA EAST
LINEAR UNIT = US SURVEY FEET
COORDINATE SYSTEM 1983 STATE PLANE
TRANSVERSE MERCATOR PROJECTION

ALL DISTANCES ARE GROUND
SCALE FACTOR = 1.0000265
GROUND DISTANCE X SCALE FACTOR = GRID DISTANCE

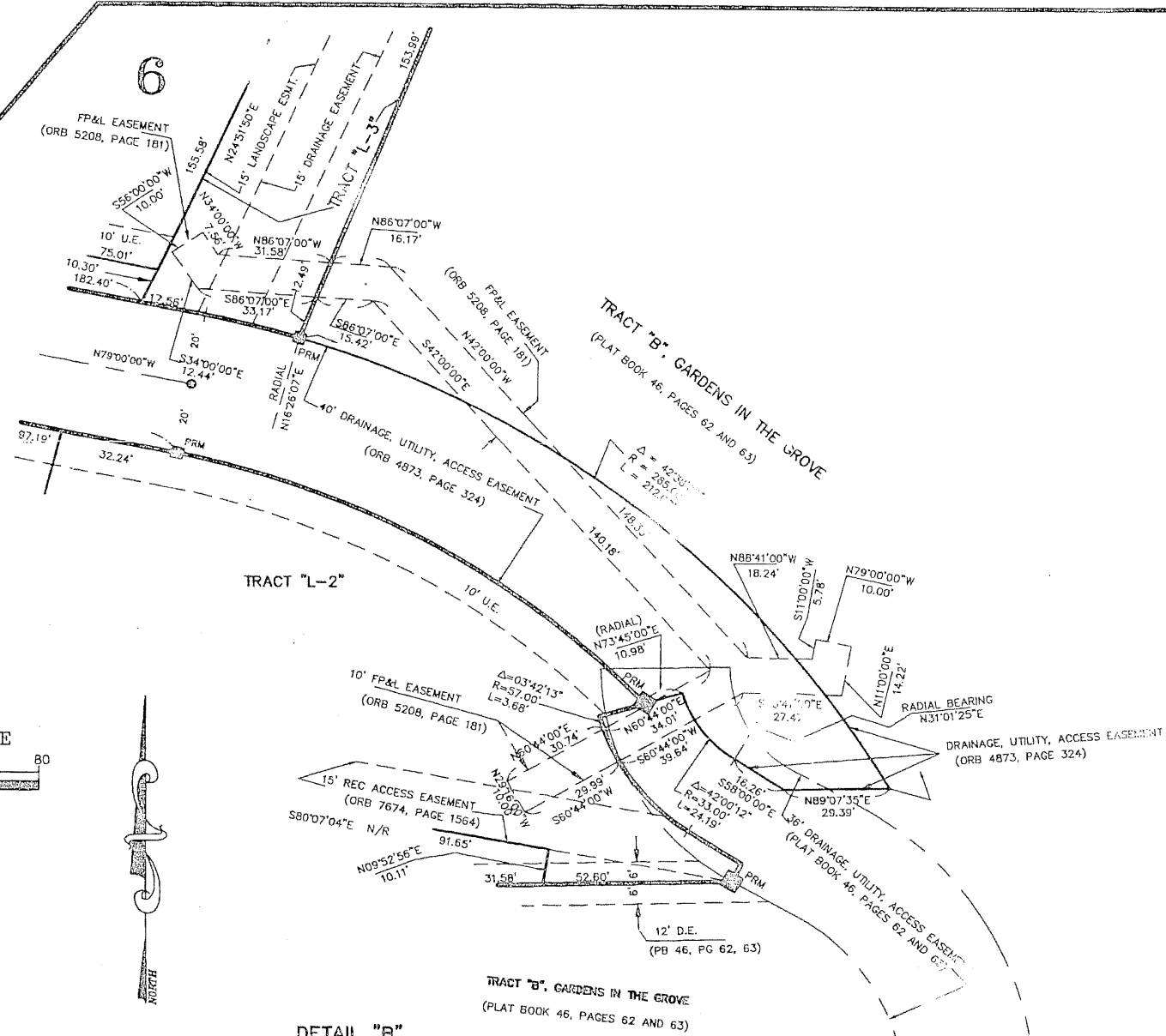
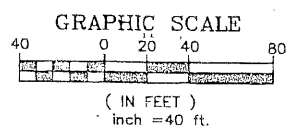
N87°30'00\"/>

PLAT TIE
I.T.S.



TRACT "B", GARDENS IN THE GROVE
(PLAT BOOK 46, PAGES 62 AND 63)

DETAIL "A"
ROAD EASEMENT GEOMETRY
DETAIL ONLY
1"=20'



DETAIL "B"
EASEMENT GEOMETRY
DETAIL ONLY
1"=20'