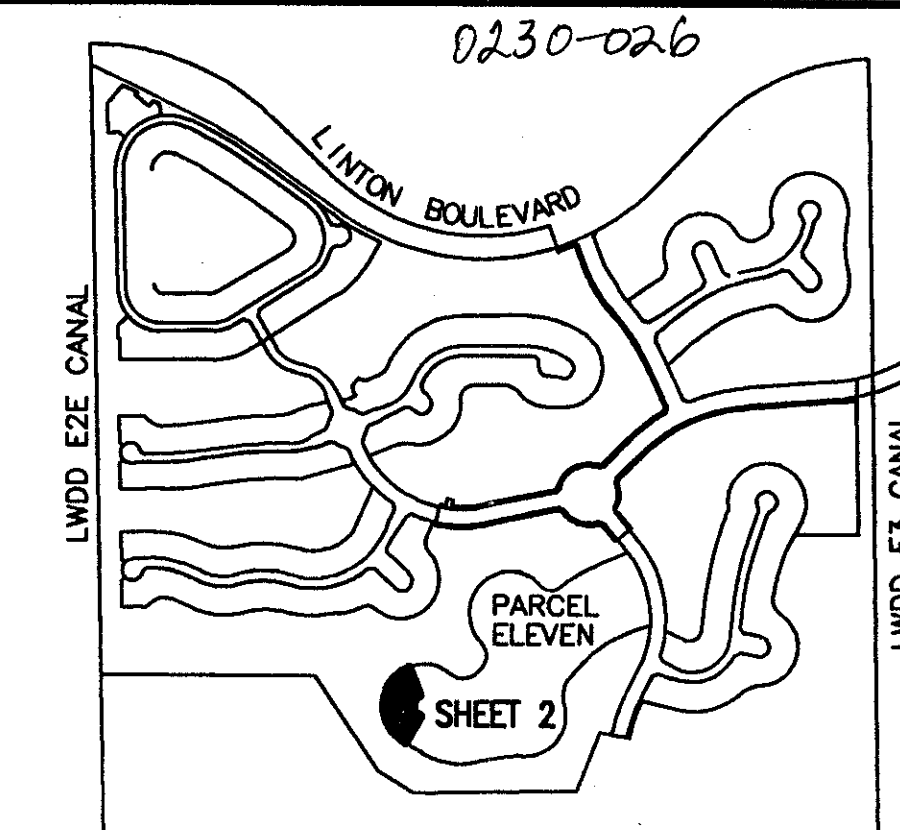


ADDISON RESERVE PARCEL ELEVEN REPLAT

PART OF GLENEAGLES/POLO CLUB WEST P.U.D.
BEING A REPLAT OF LOTS 13 AND 14
"ADDISON RESERVE PARCEL ELEVEN"
(P.B. 79, PGS. 173 - 175)
SITUATE IN SECTION 28, TOWNSHIP 46 SOUTH, RANGE 42 EAST
PALM BEACH COUNTY, FLORIDA
JULY, 1997 SHEET 2 OF 2



54

STATE OF FLORIDA
COUNTY OF PALM BEACH

THIS PLAT WAS FILED FOR
RECORD _____ DAY OF _____
AD, 1997 AND DULY RECORDED
IN PLAT BOOK _____ ON PAGES _____
AND _____

DOROTHY H. WILKEN, CLERK
BY: _____, D.C.

CIRCUIT COURT SEAL

SHEET LOCATION MAP
NOT TO SCALE

*PET-80-2152
ALOC. #0001
5/3/31/97*

(all used up)

ADDISON RESERVE PARCEL ELEVEN REPLAT
PAGE 54
SUBDIVISION # PARCEL ELEVEN REPLAT
BOOK 81

FLOOD ZONE P
FLOOR MAP # A-13/14
ROAD # 33
SECTION 28
TOWNSHIP 46 SOUTH
RANGE 42 EAST
ZIP CODE 33411
PUD NAME PART OF GLENEAGLES/POLO CLUB WEST

ADDISON RESERVE PLAT THREE
(PB 78, PGS 5-12)
TRACT LK-19

ADDISON RESERVE PARCEL ELEVEN
(PB 79, PGS 173-175)

- LEGEND**
- Δ CENTRAL (DELTA) ANGLE
 - L ARC LENGTH
 - LME LAKE MAINTENANCE EASEMENT
 - (NR) NON-RADIAL
 - PB PLAT BOOK
 - PG(S) PAGE(S)
 - R RADIUS
 - UE UTILITY EASEMENT
 - PERMANENT REFERENCE MONUMENT
 - FOUND PLS# 4763
 - PERMANENT REFERENCE MONUMENT SET PLS# 4763
 - PERMANENT CONTROL POINT FOUND PLS# 4763
 - c CENTERLINE

Palm Beach County
Control Point "GATTO"
Brass Disc in Concrete
N 763501.6313
E 928321.8927

3045.57' S69°18'37"W (GRID)

Palm Beach County
Control Point "GAST"
Brass Disc in Concrete
N 763538.3000
E 931367.3500

ALL DISTANCES ARE GROUND
SCALE FACTOR = 1.0000338

N21°34'06"W (Plat) 00°00'15" Bearing
N21°33'51"W (Grid) Clockwise Rotation (Plat to Grid)

West line of Lot 15,
"ADDISON RESERVE PARCEL ELEVEN"
(PB 79, PGS 173-175)
Basis of Bearing

COORDINATES SHOWN ARE GRID
DATUM = NAD 83 1990 ADJUSTMENT
ZONE = FLORIDA EAST
LINEAR UNIT = US SURVEY FEET
COORDINATE SYSTEM 1983 STATE PLANE
TRANSVERSE MERCATOR PROJECTION
GROUND DISTANCE X SCALE FACTOR = GRID

0230-026

THIS INSTRUMENT WAS PREPARED BY MARY HANNA CLODFELTER, P.S.M. IN THE OFFICES OF MOCK, ROOS & ASSOCIATES, INC., 5720 CORPORATE WAY, WEST PALM BEACH, FLORIDA 33407.

SCALE:
1" = 40'
P.A. NO.:
94182.12
DATE:
JULY 1997
DRAWING NO.
46-42-28-137

MOCK ROOS
ENGINEERS - SURVEYORS - PLANNERS

5720 Corporate Way, West Palm Beach, Florida 33407
(561) 663-3113, fax 478-7248

ADDISON RESERVE PARCEL ELEVEN REPLAT

PART OF GLENEAGLES/POLO CLUB WEST P.U.D.
BEING A REPLAT OF LOTS 13 AND 14
"ADDISON RESERVE PARCEL ELEVEN"
(P.B. 79, PGS. 173 - 175)
SITUATE IN SECTION 28, TOWNSHIP 46 SOUTH, RANGE 42 EAST
PALM BEACH COUNTY, FLORIDA

81/54