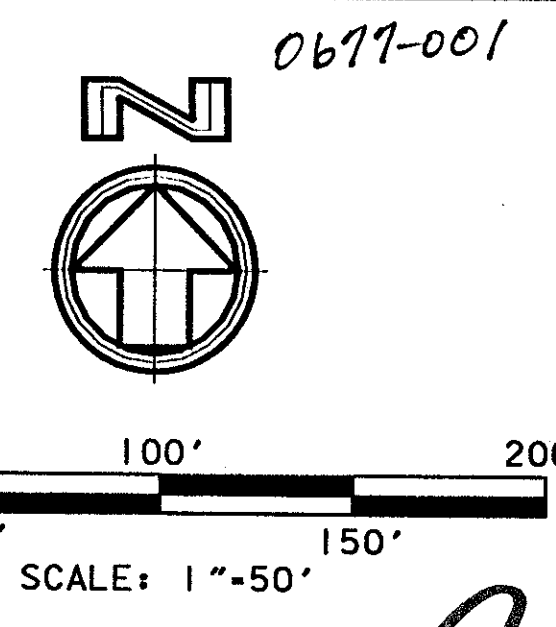


THIS INSTRUMENT WAS PREPARED BY:
RICKIE C. WEINBERG OF
CARMAN-PROCTOR AND ASSOCIATES, INC.
CONSULTING ENGINEERS
 SURVEYORS ENGINEERS PLANNERS
 6191 WEST ATLANTIC BLVD., MARGATE, FLORIDA 33063
 JULY 1996 950508C DCD

LAKEVIEW ESTATES PHASE 1

A REPLAT OF A PORTION OF BLOCK 38, "PALM BEACH FARMS CO. PLAT NO. 3"
 (P.B.2, PGS.45-54, P.B.C.R.) AND THE RIGHTS-OF-WAY INCLUDED THEREIN,
 IN SECTION 4, TOWNSHIP 45 SOUTH, RANGE 42 EAST, PALM BEACH COUNTY, FLORIDA

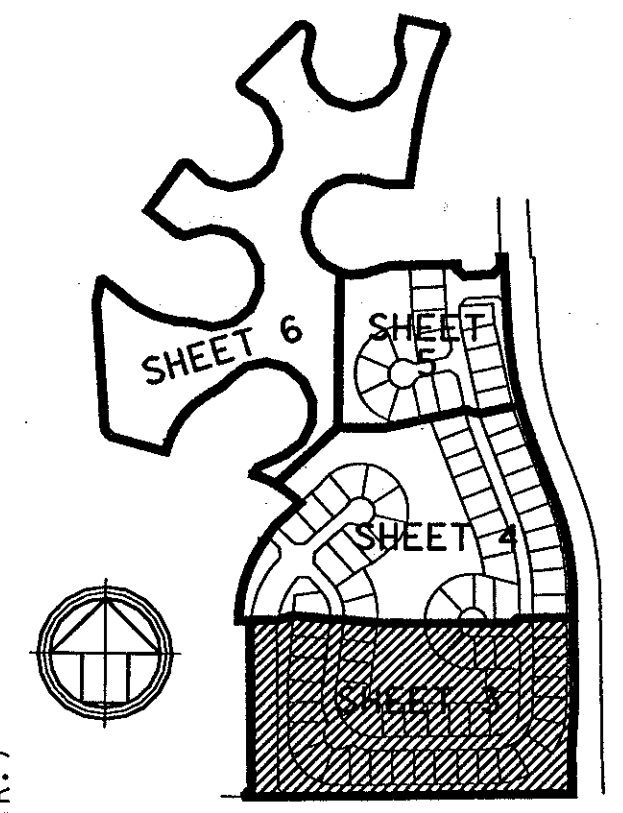
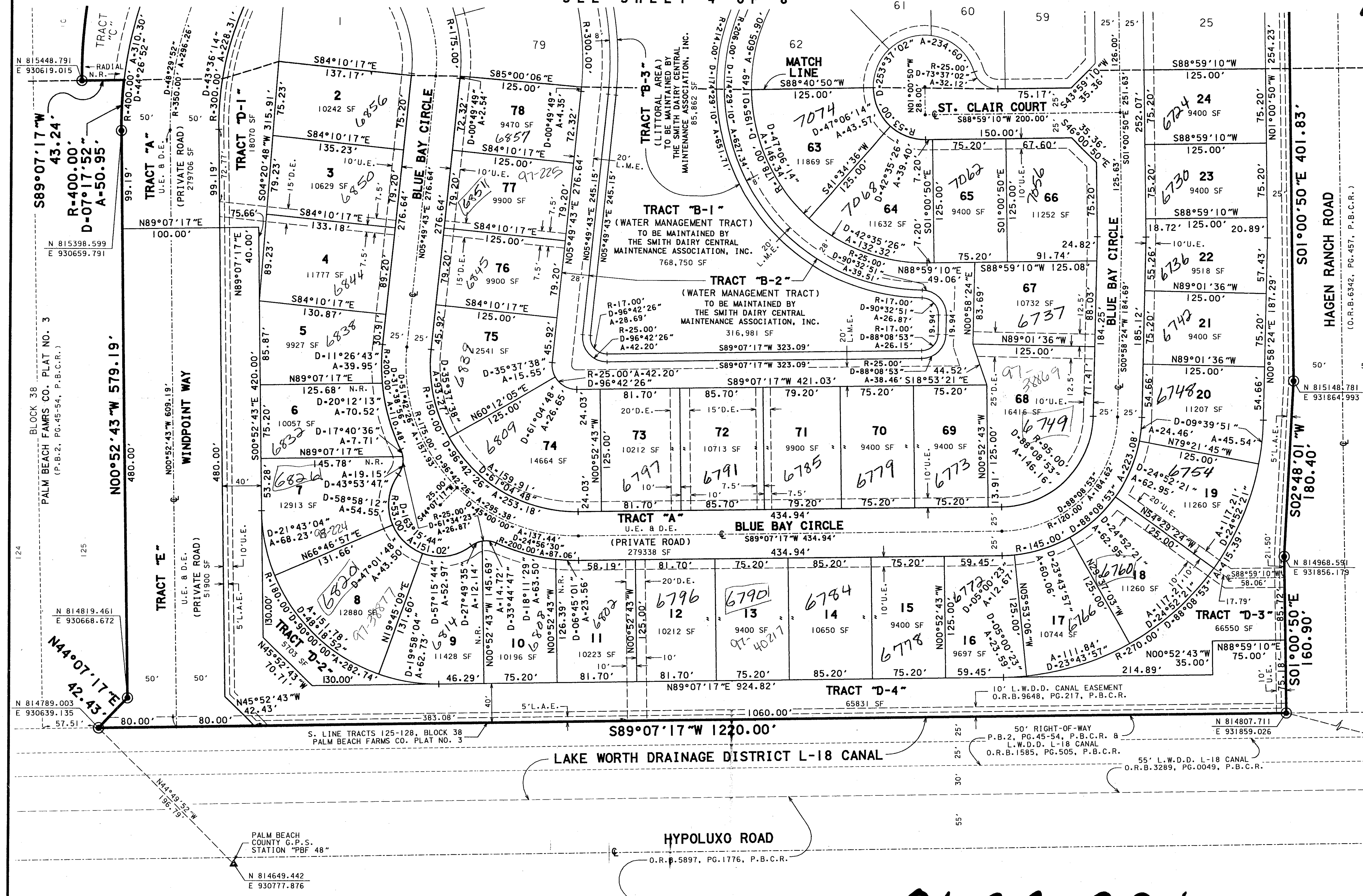


60

PET. 95-87
 ALLOC. #0001
 5/12/11

SHEET 3 OF 6 SHEETS

SEE SHEET 4 OF 6



KEY MAP

NOT TO SCALE

PET. 95-87
 SMITH DAIRY
 EAST PUD
 TR. E PL 1

- LEGEND**
- SET PERMANENT REFERENCE MONUMENT (P.R.M.) LS 5273
 - PERMANENT CONTROL POINT (P.C.P.) LS 5273
 - CENTERLINE
 - ARC LENGTH
 - DELTA (CENTRAL ANGLE)
 - DRAINAGE EASEMENT
 - LIMITED ACCESS EASEMENT
 - LAKE MAINTENANCE EASEMENT
 - LIFT STATION EASEMENT
 - LAKE WORTH DRAINAGE DISTRICT
 - NON-RADIAL
 - OFFICIAL RECORDS BOOK
 - PAGE
 - PLAT BOOK
 - PALM BEACH COUNTY RECORDS
 - PERMANENT CONSTRUCTION EASEMENT
 - POINT OF BEGINNING
 - POINT OF COMMENCEMENT
 - PLANNED UNIT DEVELOPMENT
 - RADIUS
 - RIGHT-OF-WAY
 - SQUARE FEET
 - UTILITY EASEMENT

SUBDIVISION LAKEVIEW ESTATES PHASE 1
 BOOK 81 PAGE 60
 FLOOD ZONE
 ZONING PD
 MAP CODE 03-00
 PUD MAKE
 DATE: 12-Feb-97 14:01

0677-001

81/60