

THIS INSTRUMENT WAS PREPARED BY:
RICKIE C. WEINBERG OF
CARMAHAN-PROCTOR AND ASSOCIATES, INC.
CONSULTING ENGINEERS
 SURVEYORS ENGINEERS PLANNERS
 6191 WEST ATLANTIC BLVD., MARGATE, FLORIDA 33063
 JULY 1996 950508C DCD

SMITH DAIRY EAST P.U.D.

LAKEVIEW ESTATES PHASE 1

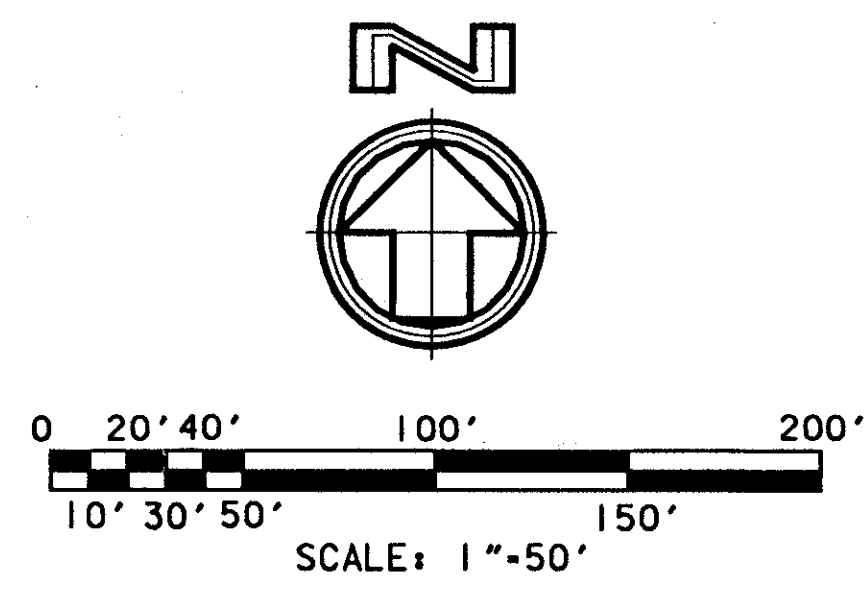
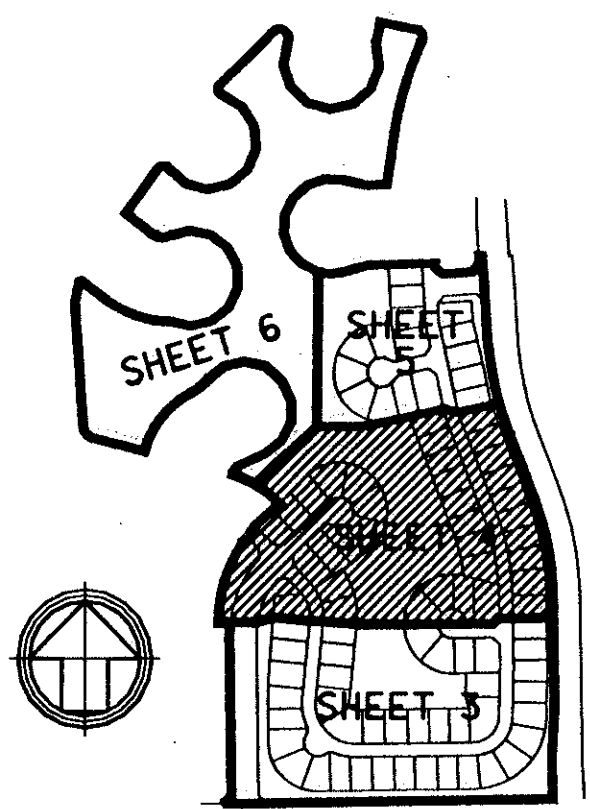
A REPLAT OF A PORTION OF BLOCK 38, "PALM BEACH FARMS CO. PLAT NO. 3"
 (P.B.2, PGS.45-54, P.B.C.R.) AND THE RIGHTS-OF-WAY INCLUDED THEREIN,
 IN SECTION 4, TOWNSHIP 45 SOUTH, RANGE 42 EAST, PALM BEACH COUNTY, FLORIDA

0677-001

61

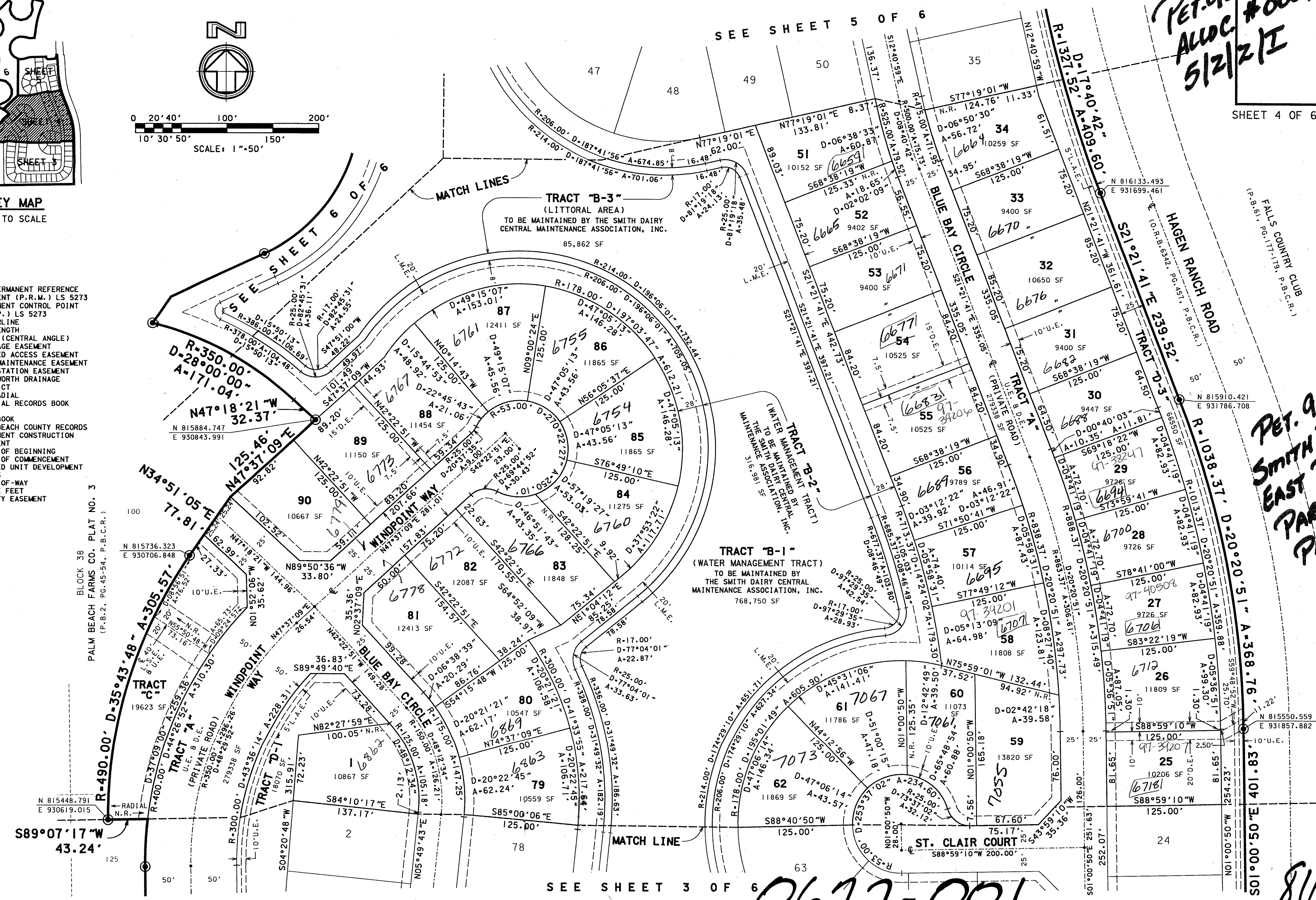
PET. 95-87
ALOC #0001
5/2/21

SHEET 4 OF 6 SHEETS



- LEGEND:**
- SET PERMANENT REFERENCE MONUMENT (P.R.M.) LS 5273
 - PERMANENT CONTROL POINT (P.C.P.) LS 5273
 - CENTERLINE
 - ARC LENGTH
 - DELTA (CENTRAL ANGLE)
 - DRAINAGE EASEMENT
 - LIMITED ACCESS EASEMENT
 - LAKE MAINTENANCE EASEMENT
 - LIFT STATION EASEMENT
 - LAKE WORTH DRAINAGE
 - DISTRICT
 - NON-RADIAL
 - OFFICIAL RECORDS BOOK
 - PAGE
 - P.B.
 - P.B.C.R.
 - P.C.E.
 - POINT OF BEGINNING
 - POINT OF COMMENCEMENT
 - PLANNED UNIT DEVELOPMENT
 - RADIUS
 - R/W
 - RIGHT-OF-WAY
 - SQUARE FEET
 - U.E.
 - UTILITY EASEMENT

SUBDIVISION # PHASE I
 BOOK 81 PAGE 61 FLOOD MAP #170A
 FLOOD ZONE C ZONING PD
 ROAD # 49
 ZIP CODE 33408
 FILE: G:\projects\0677\0677-001.dwg
 DATE: 11-Dec-96 11:10



PET. 95-87
SMITH DAIRY
EAST PUD
PAR E
PH. 1

0677-001

8/1/61