

THIS INSTRUMENT WAS PREPARED BY:

**RICKIE C. WEINBERG OF
CARNAHAN-PROCTOR AND ASSOCIATES, INC.
CONSULTING ENGINEERS**
SURVEYORS ENGINEERS PLANNERS
6191 WEST ATLANTIC BLVD., MARGATE, FLORIDA 33063
JULY 1996 950508C DCD

SMITH DAIRY EAST P.U.D.

LAKEVIEW ESTATES PHASE 1

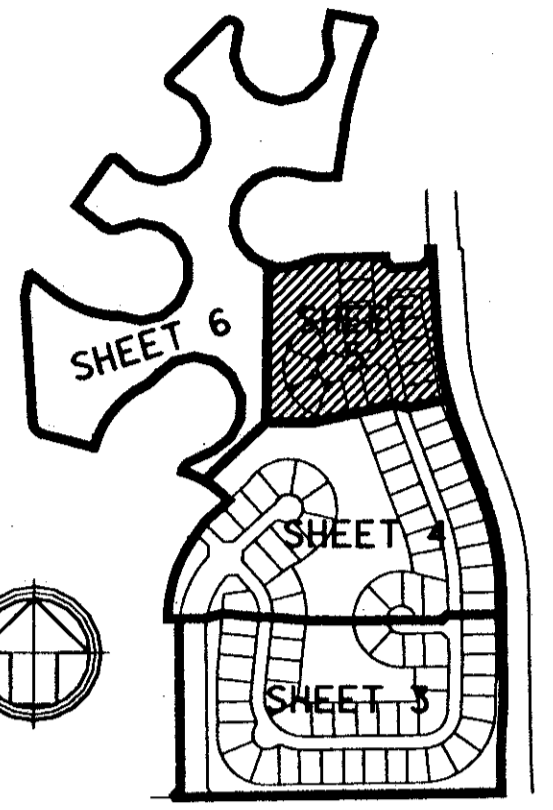
A REPLAT OF A PORTION OF BLOCK 38, "PALM BEACH FARMS CO. PLAT NO. 3" (P.B.2, PGS.45-54, P.B.C.R.) AND THE RIGHTS-OF-WAY INCLUDED THEREIN, IN SECTION 4, TOWNSHIP 45 SOUTH, RANGE 42 EAST, PALM BEACH COUNTY, FLORIDA

SECTION 4-45-42
N. LINE
589°19'28"W 1941.59'
P.O.C.
NE CORNER
SECTION 4-45-42

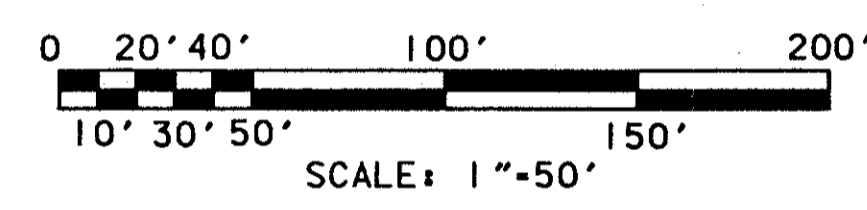
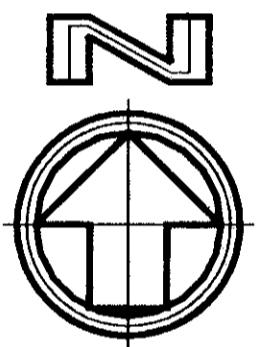
62

*PET. 95-87
ALOC #0001
5/2/2/I*

SHEET 5 OF 6 SHEETS



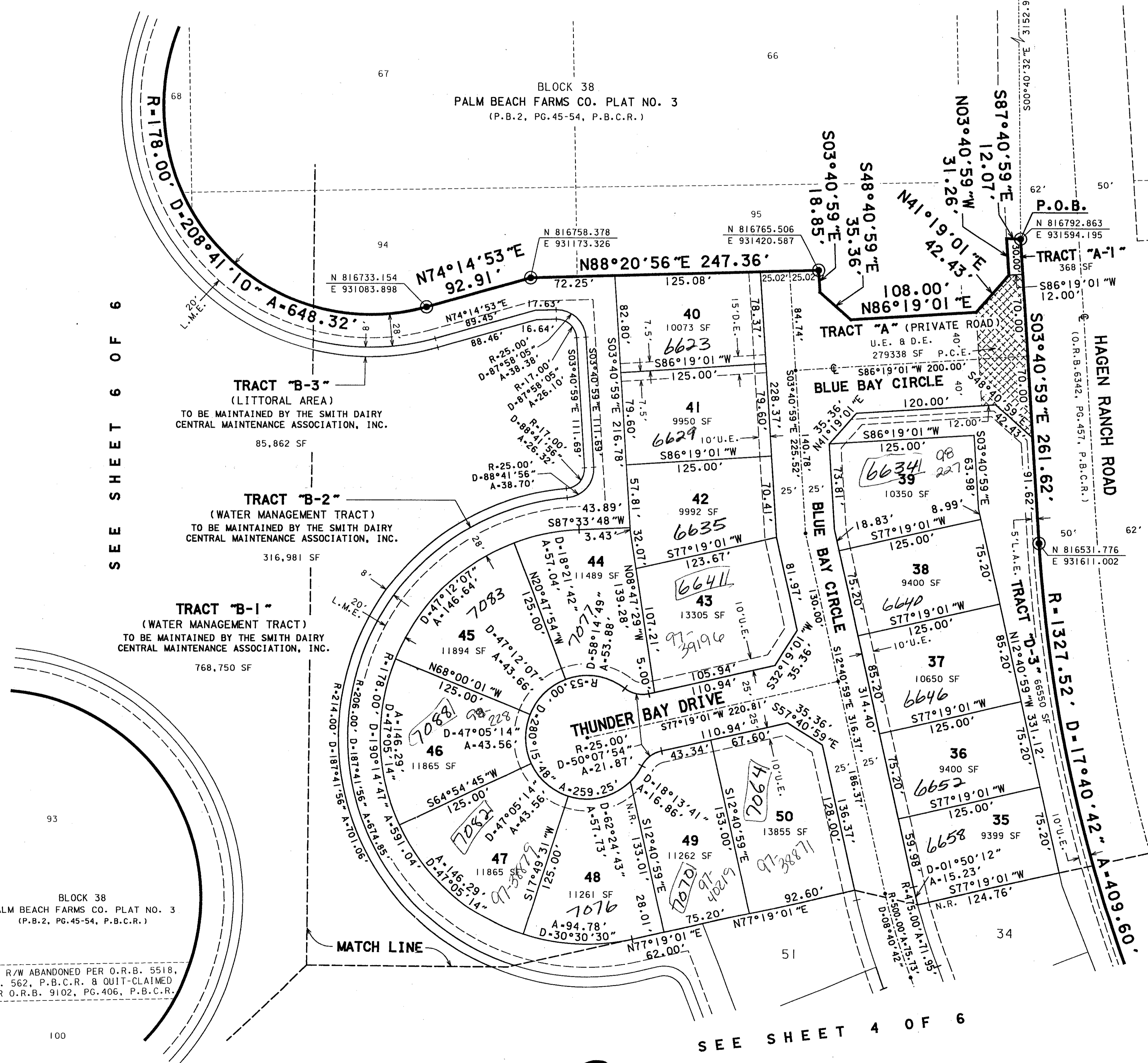
KEY MAP
NOT TO SCALE



- LEGEND:**
- ⊙ SET PERMANENT REFERENCE MONUMENT (P.R.M.) LS 5273
 - PERMANENT CONTROL POINT (P.C.P.) LS 5273
 - CENTERLINE
 - ARC LENGTH
 - Δ DELTA (CENTRAL ANGLE)
 - D.E. DRAINAGE EASEMENT
 - L.A.E. LIMITED ACCESS EASEMENT
 - L.M.E. LAKE MAINTENANCE EASEMENT
 - L.S.E. LIFT STATION EASEMENT
 - L.W.D.D. LAKE WORTH DRAINAGE DISTRICT
 - N.R. NON-RADIAL
 - O.R.B. OFFICIAL RECORDS BOOK
 - PG. PAGE
 - P.B. PLAT BOOK
 - P.B.C.R. PALM BEACH COUNTY RECORDS
 - P.C.E. PERMANENT CONSTRUCTION EASEMENT
 - P.O.B. POINT OF BEGINNING
 - P.O.C. POINT OF COMMENCEMENT
 - P.U.D. PLANNED UNIT DEVELOPMENT
 - R. RADIUS
 - R/W RIGHT-OF-WAY
 - SF SQUARE FEET
 - U.E. UTILITY EASEMENT

SUBDIVISION # PHASE I
BOOK 81 PAGE 62
FLOOD ZONE B FLOOD MAP # 170H
QUAD # 44
ZIP CODE 33406
DATE: 24-Dec-96

SEE SHEET 6 OF 6



*PET. 95-87
SMITH DAIRY EAST PUD
PAR. E TR. 1*

FALLS COUNTRY CLUB
(P.B.61, PG.177-179, P.B.C.R.)

30' R/W ABANDONED PER O.R.B. 5518, PG. 562, P.B.C.R. 8 QUIT-CLAIMED PER O.R.B. 9102, PG.406, P.B.C.R.

SEE SHEET 4 OF 6

0677-001

81/62