

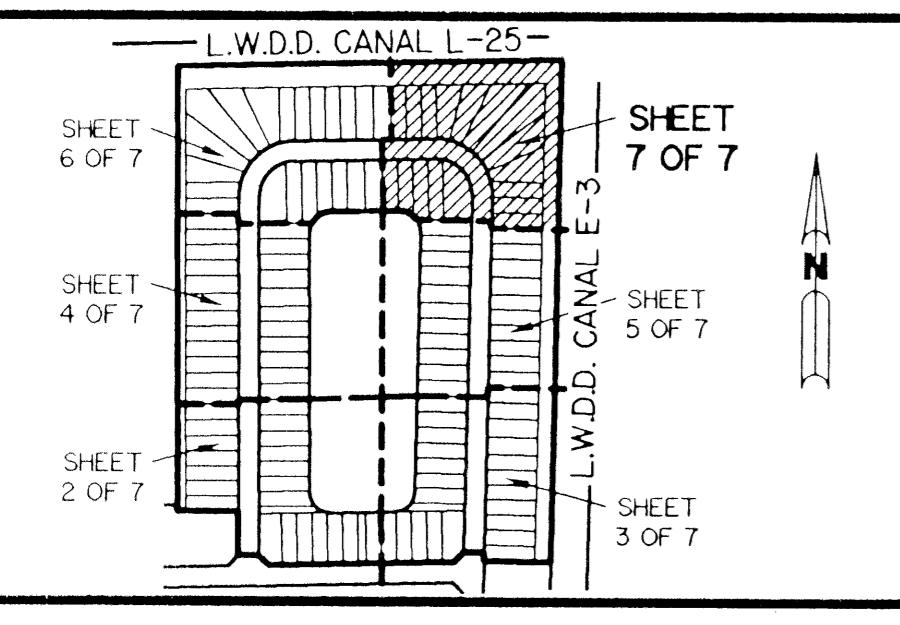
0627-003

71

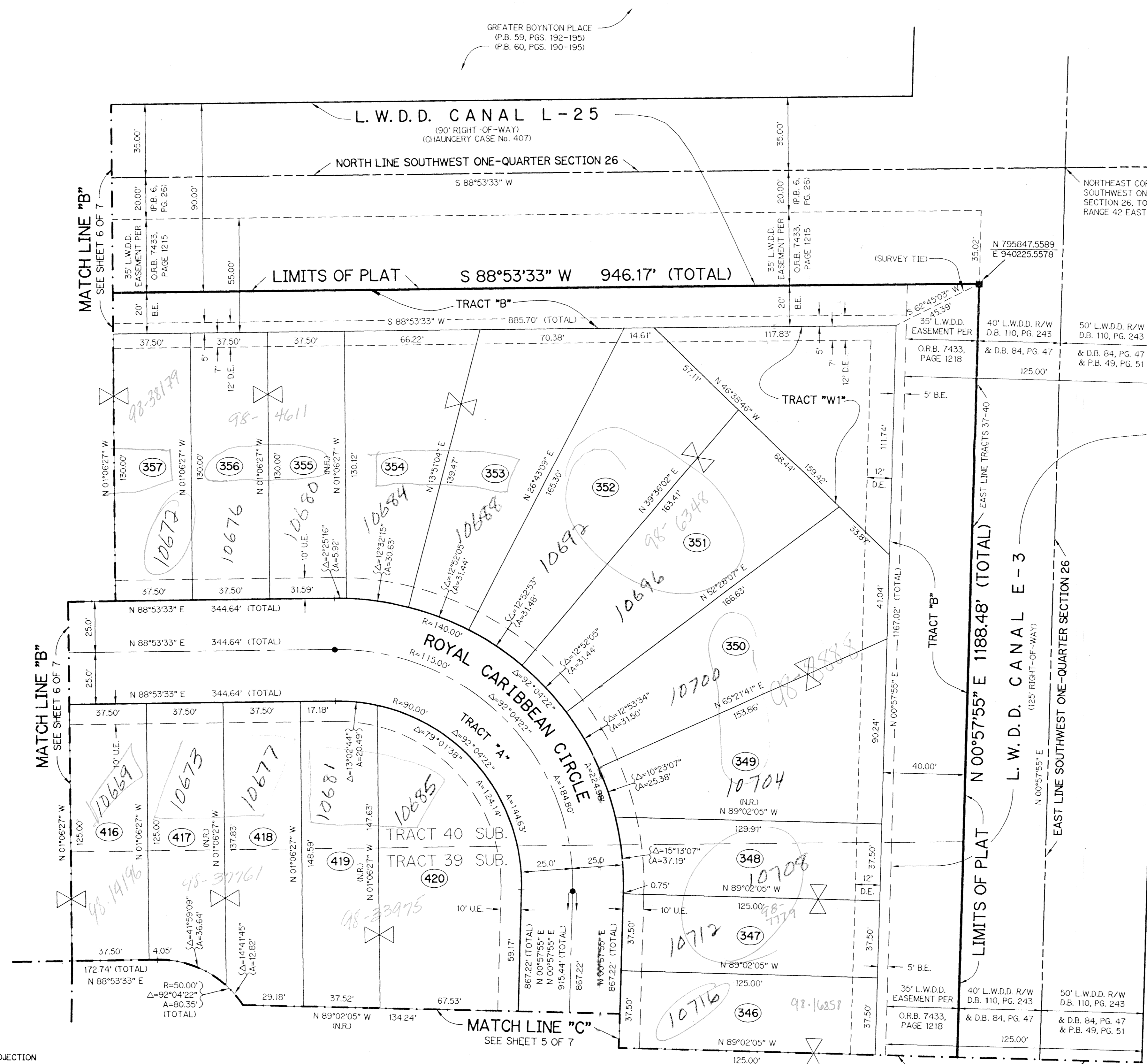
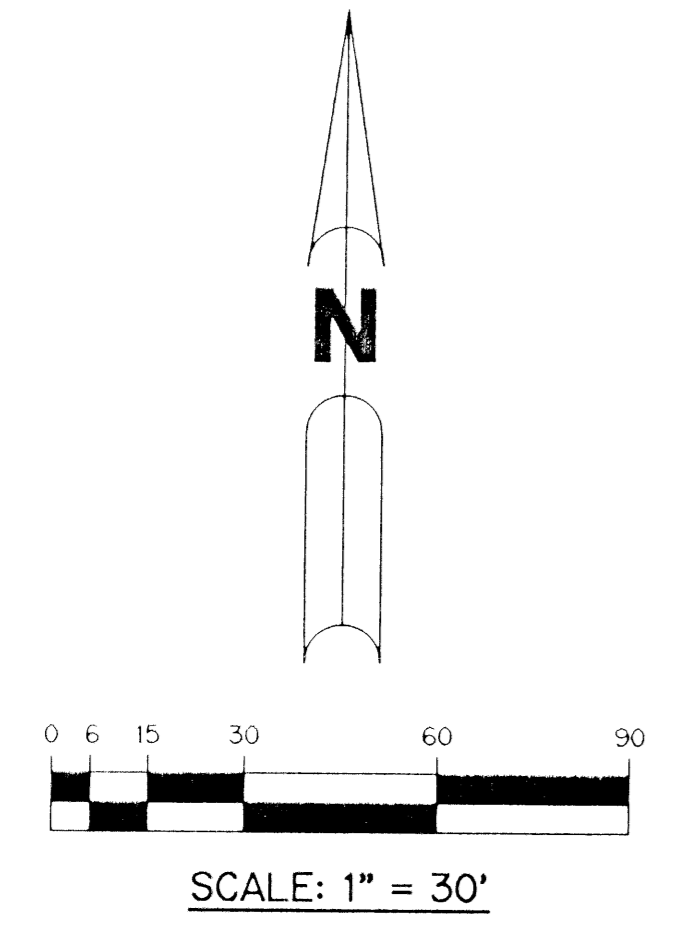
MAJESTIC ISLES - PLAT THREE

BEING A REPLAT OF A PORTION OF TRACTS 37, 38, 39, AND 40 ACCORDING TO THE PLAT OF THE SUBDIVISION OF SECTION 26, TOWNSHIP 45 SOUTH, RANGE 42 EAST. AS RECORDED IN PLAT BOOK 6, PAGE 26, PUBLIC RECORDS OF PALM BEACH COUNTY, FLORIDA.

SHEET 7 OF 7 MARCH, 1995



KEY MAP N.T.S.



*PET. 88-139B
NO SCHOOLS-RESTRICTIVE
COVENANT
5/3/3/K*

*CAMBRIDGE PARK PUB
PARCEL B*

- LEGEND:**
- - PERMANENT REFERENCE MONUMENT, PLS #4190
 - - PERMANENT CONTROL POINT, PLS #4190
 - △ - DELTA ANGLE
 - A - ARC LENGTH
 - B.E. - BUFFER EASEMENT
 - D.B. - DEED BOOK
 - D.E. - DRAINAGE EASEMENT
 - L.M.E. - LAKE MAINTENANCE EASEMENT
 - L.W.D.D. - LAKE WORTH DRAINAGE DISTRICT
 - N.R. - NOT RADIAL
 - N.T.S. - NOT TO SCALE
 - O.R.B. - OFFICIAL RECORD BOOK
 - P.B. - PLAT BOOK
 - PGS. - PAGES
 - P.L.S. - PROFESSIONAL LAND SURVEYOR
 - SUB. - SUBDIVISION OF SECTION 26 (P.B. 6, PG. 26)
 - R - RADIUS
 - R/W - RIGHT-OF-WAY
 - TYP. - TYPICAL
 - U.E. - UTILITY EASEMENT
 - ⊗ - INDICATES COMMON LOT LINE

THIS INSTRUMENT PREPARED BY WILBUR F. DIVINE, P.L.S., 4190, STATE OF FLORIDA LAWSON, NOBLE AND ASSOCIATES, INC., ENGINEERS PLANNERS SURVEYORS WEST PALM BEACH, FLORIDA

NOTE:

COORDINATES SHOWN ARE GRID COORDINATES
 DATUM - 1983 NORTH AMERICAN DATUM (1990 ADJUSTMENT)
 ZONE - FLORIDA EAST ZONE
 LINEAR UNIT - US SURVEY FEET
 COORDINATE SYSTEM - 1983 STATE PLANE TRANSVERSE MERCATOR PROJECTION

ALL DISTANCES SHOWN ARE GROUND DISTANCES UNLESS OTHERWISE NOTED
 SCALE FACTOR = 1.00003235
 GRID DISTANCE = (GROUND DISTANCE) x (SCALE FACTOR)

BEARING ROTATION (PLAT TO GRID) = +0°00'24"
 EXAMPLE: N 00°16'24" W (PLAT BEARING) = N 00°16'13" W (GRID BEARING)

0627-003

8/1/71