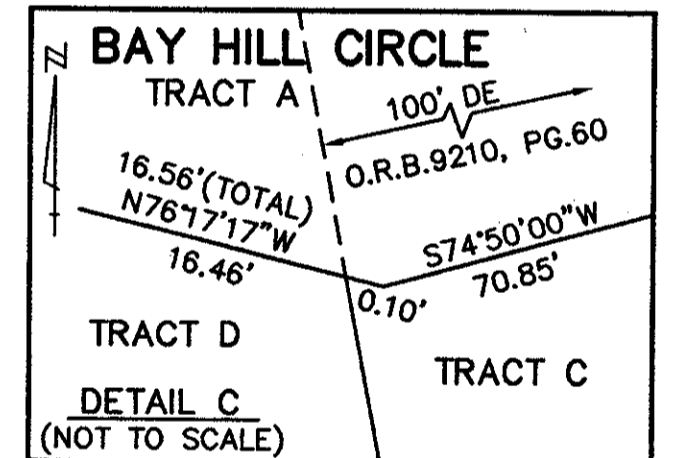
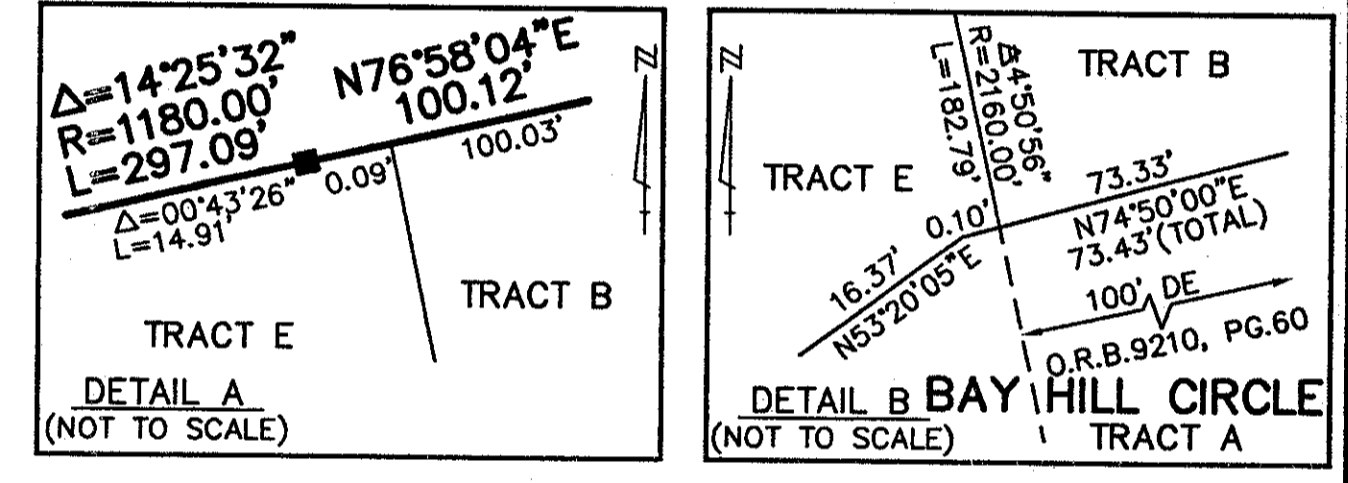


STATE OF FLORIDA  
COUNTY OF PALM BEACH  
THIS PLAT WAS FILED FOR  
RECORD \_\_\_\_\_ DAY OF \_\_\_\_\_  
AD, 1997 AND DULY RECORDED  
IN PLAT BOOK \_\_\_\_\_ ON PAGES  
\_\_\_\_\_ AND \_\_\_\_\_  
DOROTHY H. WILKEN, CLERK  
BY: \_\_\_\_\_ D.C.

*Per. 87-112  
Alloc. #0001  
5/2/2/I*

# WINSTON TRAILS PARCEL EIGHT

PART OF WINSTON TRAILS P.U.D.  
SITUATE IN SECTIONS 2 AND 3, TOWNSHIP 45 SOUTH,  
RANGE 42 EAST  
PALM BEACH COUNTY, FLORIDA  
AUGUST, 1996 SHEET 3 OF 3



ALL DISTANCES ARE GROUND  
SCALE FACTOR = 1.000338  
N89°23'59"E (Grid) = 00°00'03" Bearing  
N89°24'02"E (Plat) = Counter Clockwise Rotation (Plat to Grid)  
North line of Section 2  
Township 45 South, Range 42 East  
Basis of Bearing  
COORDINATES SHOWN ARE GRID  
DATUM = MAD 83 1990 ADJUSTMENT  
ZONE = FLORIDA EAST  
LINEAR UNIT = US SURVEY FEET  
COORDINATE SYSTEM = 1983 STATE PLANE  
TRANSVERSE MERCATOR PROJECTION  
GROUND DISTANCE X SCALE FACTOR = GRID

- LEGEND
- BE BUFFER EASEMENT
  - CE CENTRAL (DELTA) ANGLE
  - DE DRAINAGE EASEMENT
  - LAE LAKE MAINTENANCE EASEMENT
  - LME LAKE MAINTENANCE EASEMENT
  - LMAE LAKE MAINTENANCE ACCESS EASEMENT
  - ME MAINTENANCE EASEMENT
  - (NR) NON-RADIAL
  - ORB OFFICIAL RECORD BOOK
  - PLAT BOOK
  - PG(S) PLAT(S)
  - R RADIUS
  - UE UTILITY EASEMENT
  - PERMANENT REFERENCE MONUMENT
  - FOUND PLS# 4763
  - PERMANENT REFERENCE MONUMENT
  - SET PLS# 4763
  - PERMANENT CONTROL POINT
  - SET PLS# 4763
  - CENTERLINE

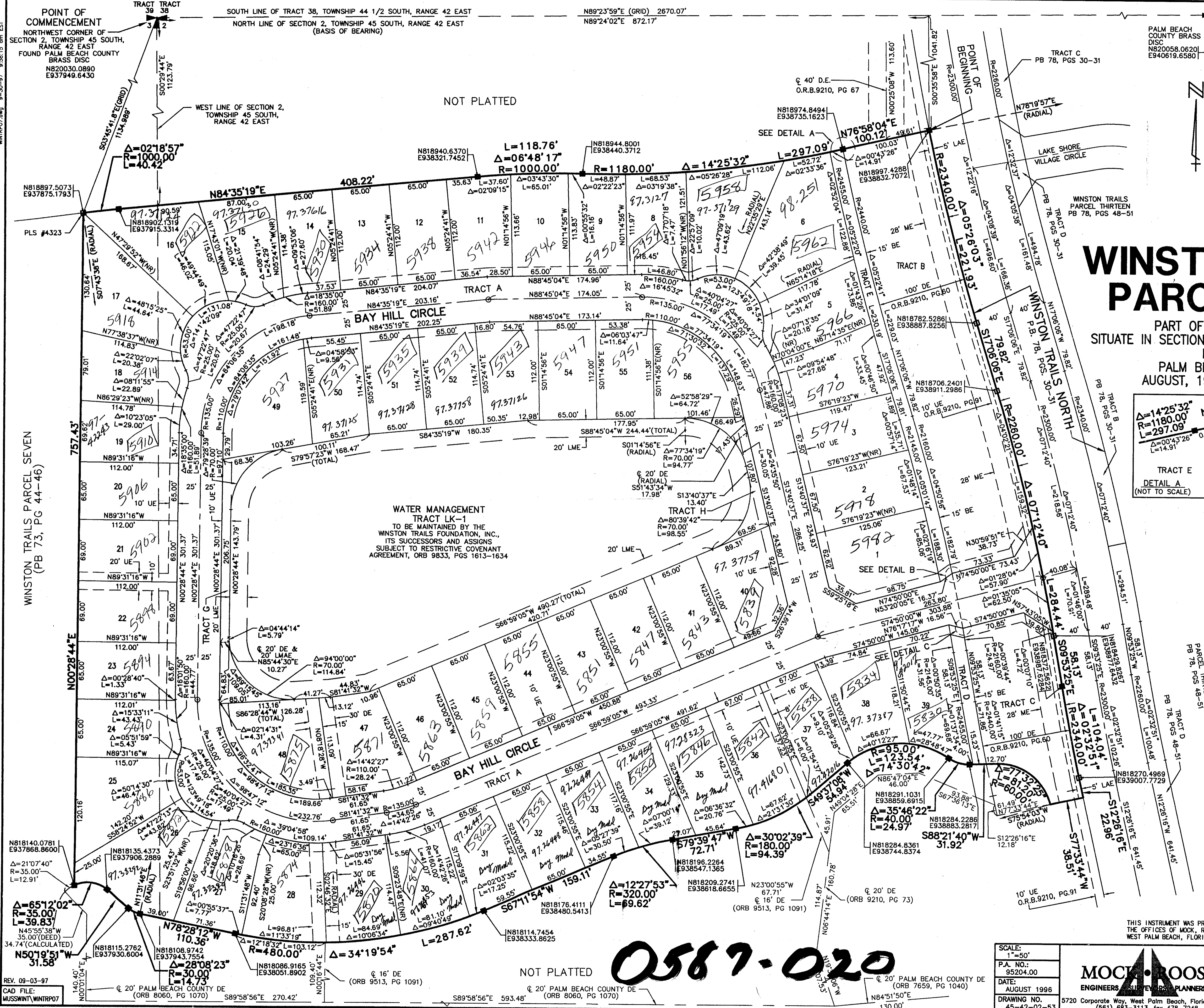
THIS INSTRUMENT WAS PREPARED BY MARY HANNA CLOFFERTER, P.S.M. IN  
THE OFFICES OF MOCK, ROOS & ASSOCIATES, INC., 5720 CORPORATE WAY,  
WEST PALM BEACH, FLORIDA 33407.

SCALE: 1"=50'  
P.A. NO.: 95204.00  
DATE: AUGUST 1996  
DRAWING NO.: 45-42-02-53

**MOCK ROOS**  
ENGINEERS SURVEYORS PLANNERS  
5720 Corporate Way, West Palm Beach, Florida 33407  
(561) 683-3113, fax 478-7248

**WINSTON TRAILS  
PARCEL EIGHT**  
PART OF WINSTON TRAILS P.U.D.  
SITUATE IN SECTIONS 2 AND 3, TOWNSHIP 45 SOUTH,  
RANGE 42 EAST  
PALM BEACH COUNTY, FLORIDA

*0587-020*



WINSTON TRAILS PARCEL SEVEN (PB 73, PG 44-46)  
WINSTON TRAILS PARCEL THIRTEEN (PB 78, PGS 48-51)  
WINSTON TRAILS PARCEL FOURTEEN (PB 78, PGS 50-51)  
WINSTON TRAILS PARCEL FIFTEEN (PB 78, PGS 51-52)  
WINSTON TRAILS PARCEL SIXTEEN (PB 78, PGS 52-53)  
WINSTON TRAILS PARCEL SEVENTEEN (PB 78, PGS 53-54)  
WINSTON TRAILS PARCEL EIGHTEEN (PB 78, PGS 54-55)  
WINSTON TRAILS PARCEL NINETEEN (PB 78, PGS 55-56)  
WINSTON TRAILS PARCEL TWENTY (PB 78, PGS 56-57)  
WINSTON TRAILS PARCEL TWENTY-ONE (PB 78, PGS 57-58)  
WINSTON TRAILS PARCEL TWENTY-TWO (PB 78, PGS 58-59)  
WINSTON TRAILS PARCEL TWENTY-THREE (PB 78, PGS 59-60)  
WINSTON TRAILS PARCEL TWENTY-FOUR (PB 78, PGS 60-61)  
WINSTON TRAILS PARCEL TWENTY-FIVE (PB 78, PGS 61-62)  
WINSTON TRAILS PARCEL TWENTY-SIX (PB 78, PGS 62-63)  
WINSTON TRAILS PARCEL TWENTY-SEVEN (PB 78, PGS 63-64)  
WINSTON TRAILS PARCEL TWENTY-EIGHT (PB 78, PGS 64-65)  
WINSTON TRAILS PARCEL TWENTY-NINE (PB 78, PGS 65-66)  
WINSTON TRAILS PARCEL THIRTY (PB 78, PGS 66-67)  
WINSTON TRAILS PARCEL THIRTY-ONE (PB 78, PGS 67-68)  
WINSTON TRAILS PARCEL THIRTY-TWO (PB 78, PGS 68-69)  
WINSTON TRAILS PARCEL THIRTY-THREE (PB 78, PGS 69-70)  
WINSTON TRAILS PARCEL THIRTY-FOUR (PB 78, PGS 70-71)  
WINSTON TRAILS PARCEL THIRTY-FIVE (PB 78, PGS 71-72)  
WINSTON TRAILS PARCEL THIRTY-SIX (PB 78, PGS 72-73)  
WINSTON TRAILS PARCEL THIRTY-SEVEN (PB 78, PGS 73-74)  
WINSTON TRAILS PARCEL THIRTY-EIGHT (PB 78, PGS 74-75)  
WINSTON TRAILS PARCEL THIRTY-NINE (PB 78, PGS 75-76)  
WINSTON TRAILS PARCEL FORTY (PB 78, PGS 76-77)  
WINSTON TRAILS PARCEL FORTY-ONE (PB 78, PGS 77-78)  
WINSTON TRAILS PARCEL FORTY-TWO (PB 78, PGS 78-79)  
WINSTON TRAILS PARCEL FORTY-THREE (PB 78, PGS 79-80)  
WINSTON TRAILS PARCEL FORTY-FOUR (PB 78, PGS 80-81)  
WINSTON TRAILS PARCEL FORTY-FIVE (PB 78, PGS 81-82)  
WINSTON TRAILS PARCEL FORTY-SIX (PB 78, PGS 82-83)  
WINSTON TRAILS PARCEL FORTY-SEVEN (PB 78, PGS 83-84)  
WINSTON TRAILS PARCEL FORTY-EIGHT (PB 78, PGS 84-85)  
WINSTON TRAILS PARCEL FORTY-NINE (PB 78, PGS 85-86)  
WINSTON TRAILS PARCEL FIFTY (PB 78, PGS 86-87)  
WINSTON TRAILS PARCEL FIFTY-ONE (PB 78, PGS 87-88)  
WINSTON TRAILS PARCEL FIFTY-TWO (PB 78, PGS 88-89)  
WINSTON TRAILS PARCEL FIFTY-THREE (PB 78, PGS 89-90)  
WINSTON TRAILS PARCEL FIFTY-FOUR (PB 78, PGS 90-91)  
WINSTON TRAILS PARCEL FIFTY-FIVE (PB 78, PGS 91-92)  
WINSTON TRAILS PARCEL FIFTY-SIX (PB 78, PGS 92-93)  
WINSTON TRAILS PARCEL FIFTY-SEVEN (PB 78, PGS 93-94)  
WINSTON TRAILS PARCEL FIFTY-EIGHT (PB 78, PGS 94-95)  
WINSTON TRAILS PARCEL FIFTY-NINE (PB 78, PGS 95-96)  
WINSTON TRAILS PARCEL SIXTY (PB 78, PGS 96-97)  
WINSTON TRAILS PARCEL SIXTY-ONE (PB 78, PGS 97-98)  
WINSTON TRAILS PARCEL SIXTY-TWO (PB 78, PGS 98-99)  
WINSTON TRAILS PARCEL SIXTY-THREE (PB 78, PGS 99-100)

BOOK \_\_\_\_\_  
PAGE 14  
FLOOD HAZARD ZONING MAP  
ZIP CODE 33463  
SUB NAME \_\_\_\_\_

REV. 09-03-97  
CAD FILE: MUSSWINTWINTP07

NOT PLATTED  
© 20' PALM BEACH COUNTY DE (ORB 9513, PG 1091)  
© 20' PALM BEACH COUNTY DE (ORB 8060, PG 1070)  
© 20' PALM BEACH COUNTY DE (ORB 7659, PG 1040)  
© 20' PALM BEACH COUNTY DE (ORB 9210, PG 73)  
© 20' PALM BEACH COUNTY DE (ORB 9513, PG 1091)  
© 20' PALM BEACH COUNTY DE (ORB 9210, PG 73)

*8/1/96*