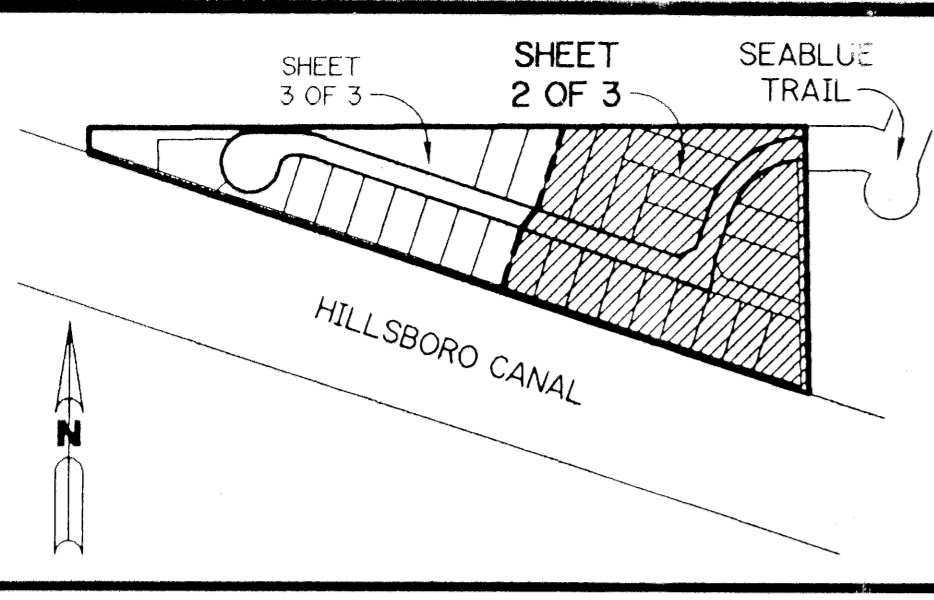


A PLANNED UNIT DEVELOPMENT BEING A PART OF BAY WINDS P.U.D.

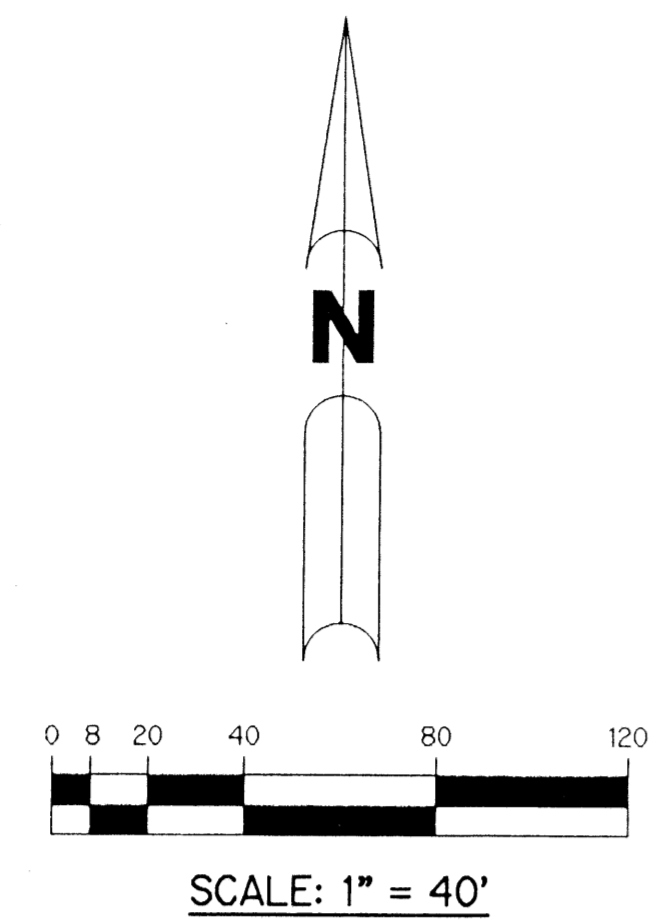
BAY WINDS - PARCEL "U"

BEING A REPLAT OF A PORTION OF TRACT 31 ACCORDING TO THE PLAT OF "FLORIDA FRUITLANDS COMPANY'S SUBDIVISION NO. 2", AS RECORDED IN PLAT BOOK 1, PAGES 102 THROUGH 105, INCLUSIVE, OF THE PUBLIC RECORDS OF PALM BEACH COUNTY, FLORIDA. LYING IN SECTION 27, TOWNSHIP 47 SOUTH, RANGE 41 EAST.

SHEET 2 OF 3 MAY, 1997



KEY MAP
N.T.S.



- LEGEND:**
- - PERMANENT REFERENCE MONUMENT, PSM #4213
 - - PERMANENT CONTROL POINT, PSM #4213
 - Δ - DELTA ANGLE
 - B.E. - BUFFER EASEMENT
 - C - CENTERLINE
 - D.B. - DEED BOOK
 - D.E. - DRAINAGE EASEMENT
 - S.D.E. - SWALE DRAINAGE EASEMENT
 - F.F.C.S. - FLORIDA FRUITLANDS COMPANY'S SUBDIVISION NO. 2 (P.B. 1, PGS. 102-105)
 - L - ARC LENGTH
 - N.R. - NOT RADIAL
 - N.T.S. - NOT TO SCALE
 - O.E. - OVERHANG EASEMENT
 - O.R.B. - OFFICIAL RECORD BOOK
 - P.B. - PLAT BOOK
 - PGS. - PAGES
 - P.S.M. - PROFESSIONAL SURVEYOR AND MAPPER
 - R - RADIUS
 - R/W - RIGHT-OF-WAY
 - S.T. - SURVEY TIE
 - U.E. - UTILITY EASEMENT
 - N 737648.0171
E 905258.2326 - DENOTES STATE PLANE COORDINATES



*PET. 80-47
ALLOC. #0001
Roads.
5/3/3/M*

NOTE:

COORDINATES SHOWN ARE GRID
DATUM = NAD 83 1990 ADJUSTMENT
ZONE = FLORIDA EAST
LINEAR UNIT = US SURVEY FEET
COORDINATE SYSTEM 1983 STATE PLANE
TRANSVERSE MERCATOR PROJECTION

ALL DISTANCES ARE GROUND
SCALE FACTOR = 1.0000113
GROUND DISTANCE X SCALE FACTOR = GRID DISTANCE

00°01'03" (COUNTERCLOCKWISE) = BEARING ROTATION (PLAT TO GRID)
N89°39'15"E (PLAT BEARING) = N89°38'12"E (GRID BEARING)

THIS INSTRUMENT PREPARED BY
PERRY C. WHITE, P.S.M. 4213, STATE OF FLORIDA
LAWSON, NOBLE AND WEBB, INC.
ENGINEERS PLANNERS SURVEYORS
WEST PALM BEACH, FLORIDA

0201-027

81/78