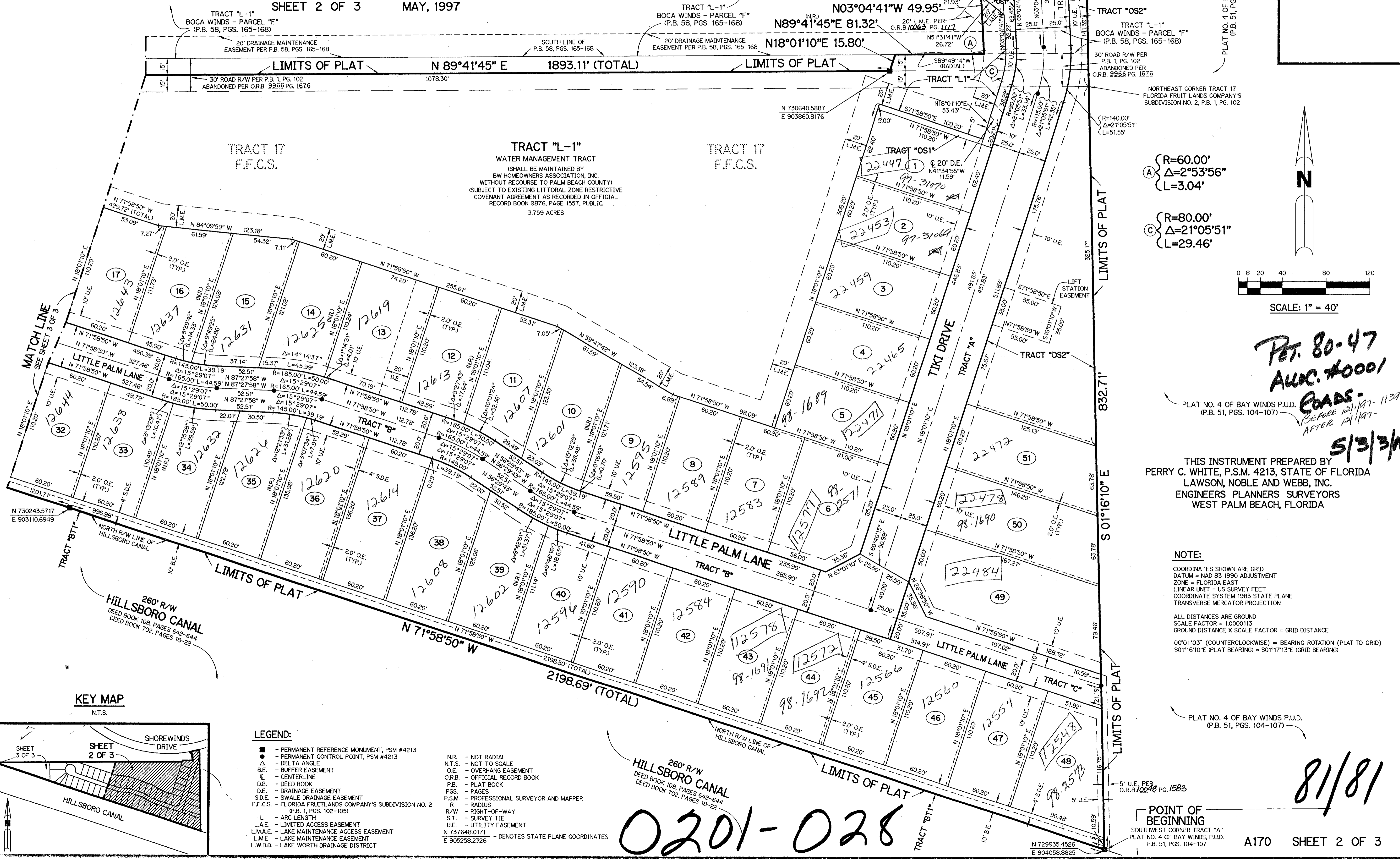


# BAY WINDS - PARCEL "V"

BEING A REPLAT OF A PORTION OF TRACTS 17 AND 24 AND ASSOCIATED ABANDONED RIGHT-OF-WAY ALL ACCORDING TO THE PLAT OF "FLORIDA FRUITLANDS COMPANY'S SUBDIVISION NO. 2", AS RECORDED IN PLAT BOOK 1, PAGES 102 THROUGH 105, INCLUSIVE, TOGETHER WITH A REPLAT OF A PORTION OF TRACT "L-1" ACCORDING TO THE PLAT OF "BOCA WINDS - PARCEL F", AS RECORDED IN PLAT BOOK 58, PAGES 165 THROUGH 168, INCLUSIVE, ALL OF THE PUBLIC RECORDS OF PALM BEACH COUNTY, FLORIDA. LYING IN SECTION 27, TOWNSHIP 47 SOUTH, RANGE 41 EAST.

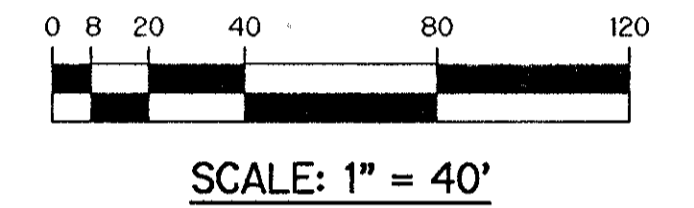
SHEET 2 OF 3 MAY, 1997

81



(A) R=60.00'  
Δ=2°53'56"  
L=3.04'

(C) R=80.00'  
Δ=21°05'51"  
L=29.46'



*Per. 80-47  
AUC. #0001  
ROADS:  
Before 12/1/97 - 11/30/98  
After 12/1/97 -  
5/3/3/M*

THIS INSTRUMENT PREPARED BY  
PERRY C. WHITE, P.S.M. 4213, STATE OF FLORIDA  
LAWSON, NOBLE AND WEBB, INC.  
ENGINEERS PLANNERS SURVEYORS  
WEST PALM BEACH, FLORIDA

**NOTE:**  
COORDINATES SHOWN ARE GRID  
DATUM = NAD 83 1990 ADJUSTMENT  
ZONE = FLORIDA EAST  
LINEAR UNIT = US SURVEY FEET  
COORDINATE SYSTEM 1983 STATE PLANE  
TRANSVERSE MERCATOR PROJECTION

ALL DISTANCES ARE GROUND  
SCALE FACTOR = 1.0000113  
GROUND DISTANCE X SCALE FACTOR = GRID DISTANCE

00°11'03" (COUNTERCLOCKWISE) = BEARING ROTATION (PLAT TO GRID)  
50°16'10"E (PLAT BEARING) = 50°17'13"E (GRID BEARING)

PLAT NO. 4 OF BAY WINDS P.U.D.  
(P.B. 51, PGS. 104-107)

POINT OF BEGINNING  
SOUTHWEST CORNER TRACT "A"  
PLAT NO. 4 OF BAY WINDS P.U.D.  
P.B. 51, PGS. 104-107

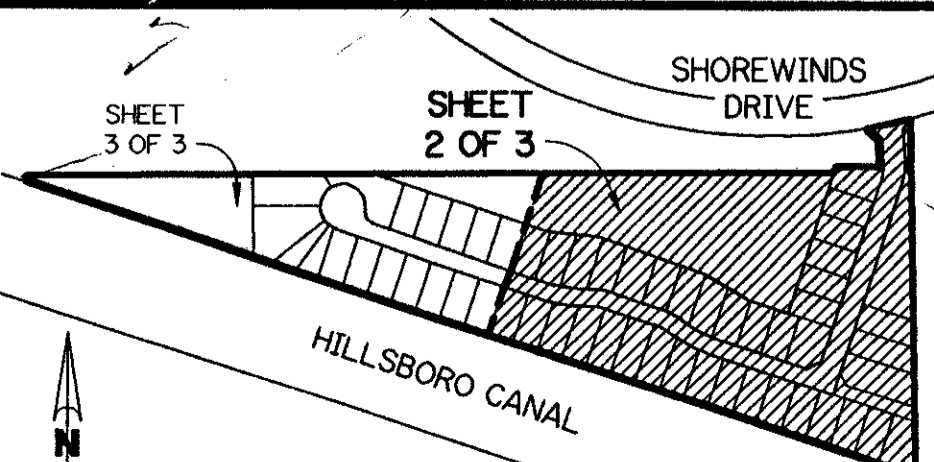
A170 SHEET 2 OF 3

0201-028

81/81

SUBDIVISION - BAY WINDS  
BOOK 81 PAGE 642-644  
FLOOD ZONE AD  
QUAD # 69  
SE 80-47  
ZIP CODE 33402  
PUD NAME BAY WINDS

KEY MAP  
N.T.S.



- LEGEND:**
- - PERMANENT REFERENCE MONUMENT, PSM #4213
  - ▲ - PERMANENT CONTROL POINT, PSM #4213
  - Δ - DELTA ANGLE
  - BE - BUFFER EASEMENT
  - CE - CENTERLINE
  - DB - DEED BOOK
  - DE - DRAINAGE EASEMENT
  - SDE - SWALE DRAINAGE EASEMENT
  - F.F.C.S. - FLORIDA FRUITLANDS COMPANY'S SUBDIVISION NO. 2 (P.B. 1, PGS. 102-105)
  - L - ARC LENGTH
  - L.A.E. - LIMITED ACCESS EASEMENT
  - L.M.A.E. - LAKE MAINTENANCE ACCESS EASEMENT
  - L.M.E. - LAKE MAINTENANCE EASEMENT
  - L.W.D.D. - LAKE WORTH DRAINAGE DISTRICT
  - N.R. - NOT RADIAL
  - N.T.S. - NOT TO SCALE
  - O.E. - OVERHANG EASEMENT
  - O.R.B. - OFFICIAL RECORD BOOK
  - P.B. - PLAT BOOK
  - PGS. - PAGES
  - P.S.M. - PROFESSIONAL SURVEYOR AND MAPPER
  - R - RADIUS
  - R/W - RIGHT-OF-WAY
  - ST. - SURVEY TIE
  - UE - UTILITY EASEMENT
  - N 737648.0171 - DENOTES STATE PLANE COORDINATES
  - E 905258.2326