

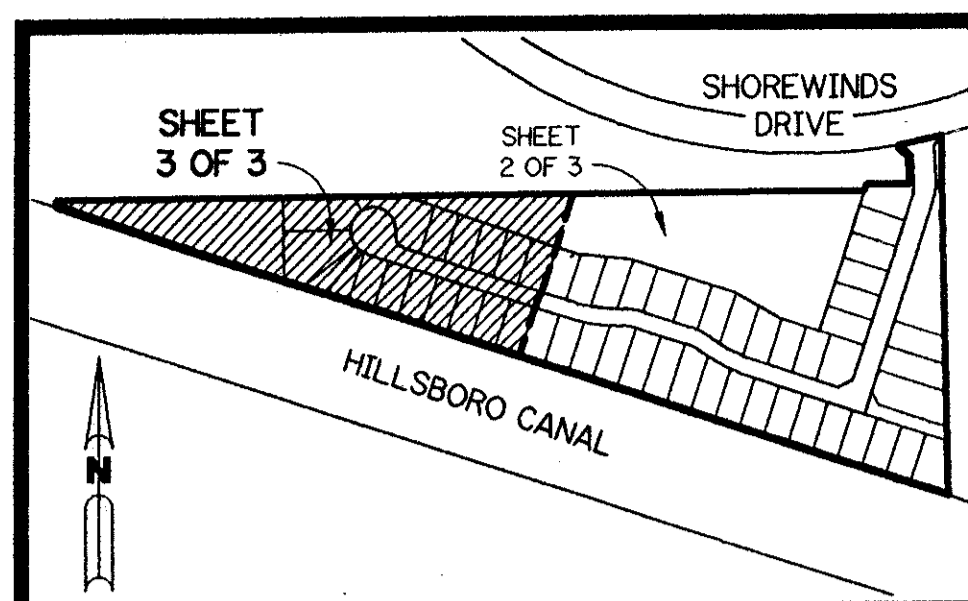
0201-028

A PLANNED UNIT DEVELOPMENT BEING A PART OF BAY WINDS P.U.D.

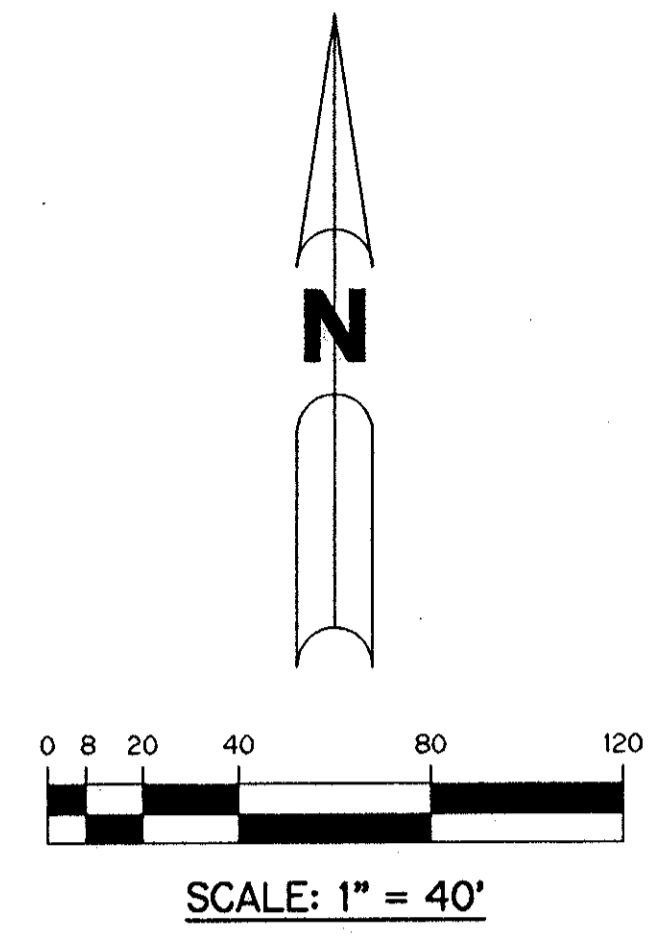
BAY WINDS - PARCEL "V"

BEING A REPLAT OF A PORTION OF TRACTS 17 AND 24 AND ASSOCIATED ABANDONED RIGHT-OF-WAY ALL ACCORDING TO THE PLAT OF "FLORIDA FRUITLANDS COMPANY'S SUBDIVISION NO. 2", AS RECORDED IN PLAT BOOK 1, PAGES 102 THROUGH 105, INCLUSIVE, TOGETHER WITH A REPLAT OF A PORTION OF TRACT "L-1" ACCORDING TO THE PLAT OF "BOCA WINDS - PARCEL F", AS RECORDED IN PLAT BOOK 58, PAGES 165 THROUGH 168, INCLUSIVE, ALL OF THE PUBLIC RECORDS OF PALM BEACH COUNTY, FLORIDA. LYING IN SECTION 27, TOWNSHIP 47 SOUTH, RANGE 41 EAST.

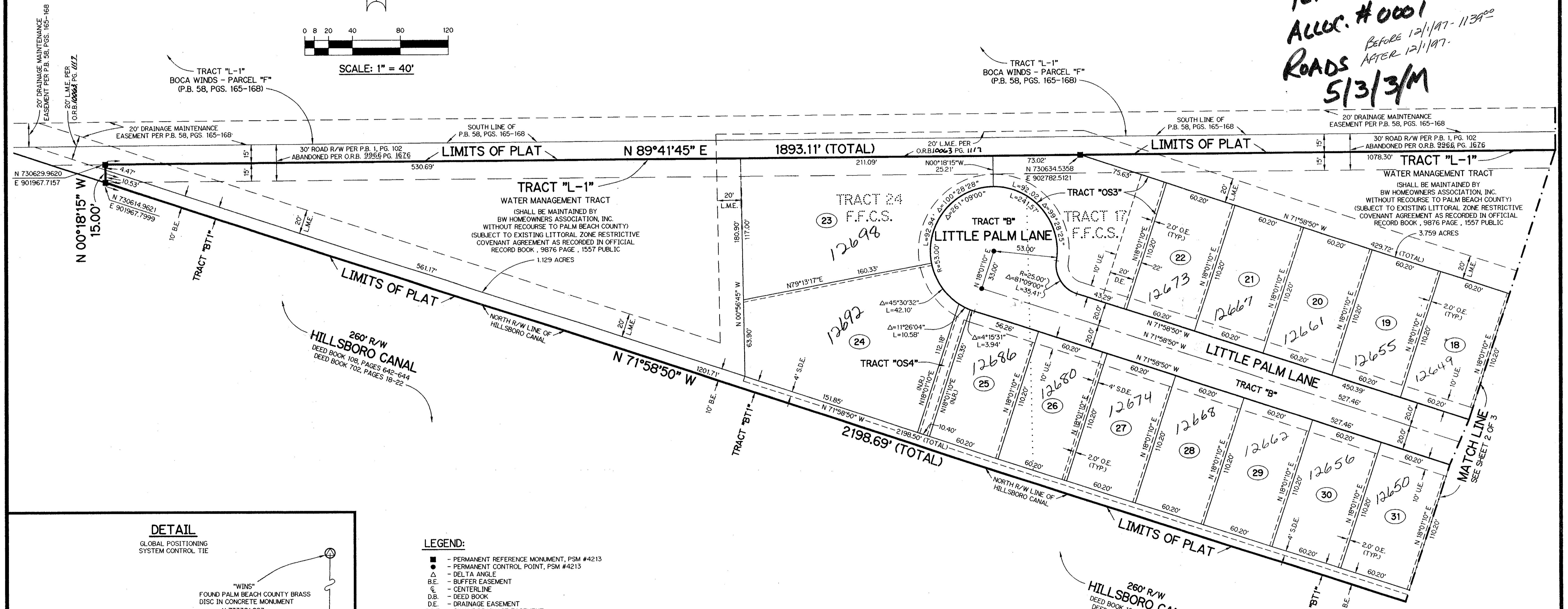
SHEET 3 OF 3 MAY, 1997



KEY MAP
N.T.S.

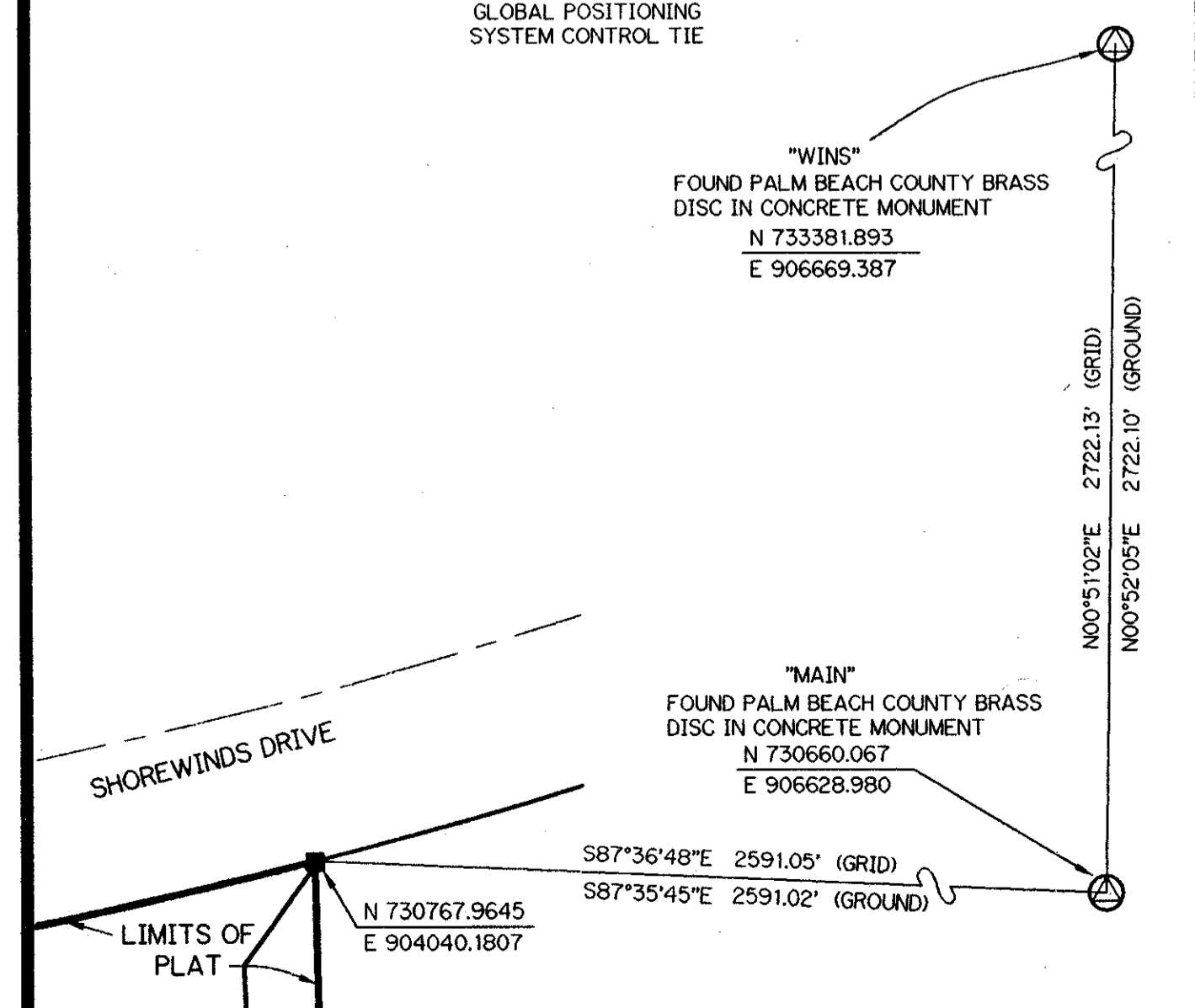


*PET. 80-47
ALLO. # 0001
ROADS BEFORE 12/1/97 - 11/30/90
AFTER 12/1/97.
5/3/3/M*



DETAIL

GLOBAL POSITIONING SYSTEM CONTROL TIE



LEGEND:

- - PERMANENT REFERENCE MONUMENT, PSM #4213
- - PERMANENT CONTROL POINT, PSM #4213
- △ - DELTA ANGLE
- BE - BUFFER EASEMENT
- C - CENTERLINE
- D.B. - DEED BOOK
- D.E. - DRAINAGE EASEMENT
- S.D.E. - SWALE DRAINAGE EASEMENT
- F.F.C.S. - FLORIDA FRUITLANDS COMPANY'S SUBDIVISION NO. 2 (P.B. 1, PGS. 102-105)
- L - ARC LENGTH
- L.A.E. - LIMITED ACCESS EASEMENT
- L.M.A.E. - LAKE MAINTENANCE ACCESS EASEMENT
- L.M.E. - LAKE MAINTENANCE EASEMENT
- L.W.D. - LAKE WORTH DRAINAGE DISTRICT
- NR - NOT RADIAL
- N.T.S. - NOT TO SCALE
- O.E. - OVERHANG EASEMENT
- O.R.B. - OFFICIAL RECORD BOOK
- P.B. - PLAT BOOK
- PGS. - PAGES
- P.S.M. - PROFESSIONAL SURVEYOR AND MAPPER
- R - RADIUS
- R/W - RIGHT-OF-WAY
- S.T. - SURVEY TIE
- U.E. - UTILITY EASEMENT
- N 737648.0171 E 905258.2326 - DENOTES STATE PLANE COORDINATES

NOTE:

COORDINATES SHOWN ARE GRID
 DATUM = NAD 83 1990 ADJUSTMENT
 ZONE = FLORIDA EAST
 LINEAR UNIT = US SURVEY FEET
 COORDINATE SYSTEM 1983 STATE PLANE
 TRANSVERSE MERCATOR PROJECTION

ALL DISTANCES ARE GROUND
 SCALE FACTOR = 1.0000113
 GROUND DISTANCE X SCALE FACTOR = GRID DISTANCE

00°01'03" (COUNTERCLOCKWISE) = BEARING ROTATION (PLAT TO GRID)
 S01°16'10"E (PLAT BEARING) = S01°17'13"E (GRID BEARING)

THIS INSTRUMENT PREPARED BY
 PERRY C. WHITE, P.S.M. 4213, STATE OF FLORIDA
 LAWSON, NOBLE AND WEBB, INC.
 ENGINEERS PLANNERS SURVEYORS
 WEST PALM BEACH, FLORIDA

SUBDIVISION # 81 PARCELS 1-11
 BOOK 91 PAGE 92
 FLOOD ZONE Aa
 QUAD # 69
 SE 80-47
 PUD NAME BAY WINDS

0201-028

81/82