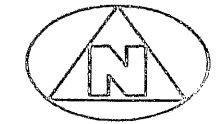


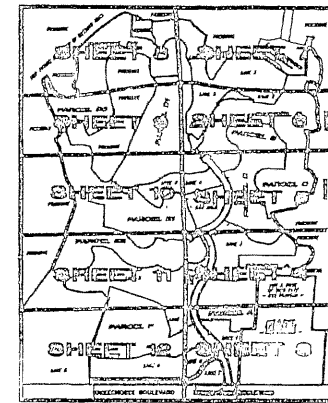
BEING A REPLAT OF TRACT "A" AND TRACT "B", OAKTON LAKES R.P.D., RECORDED IN PLAT BOOK 80, PAGE 33, AND LYING IN SECTION 20, TOWNSHIP 43 SOUTH, RANGE 42 EAST, CITY OF WEST PALM BEACH, PALM BEACH COUNTY, FLORIDA

(SEE SHEET 4 OF 12)  
MATCH LINE

NOT A PART  
OF THIS PLAT  
(UNPLATTED)

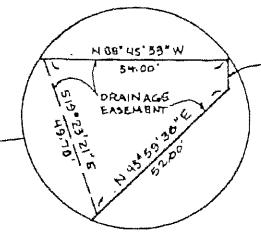


0 30' 00" 120'  
GRAPHIC SCALE  
(IN FEET)

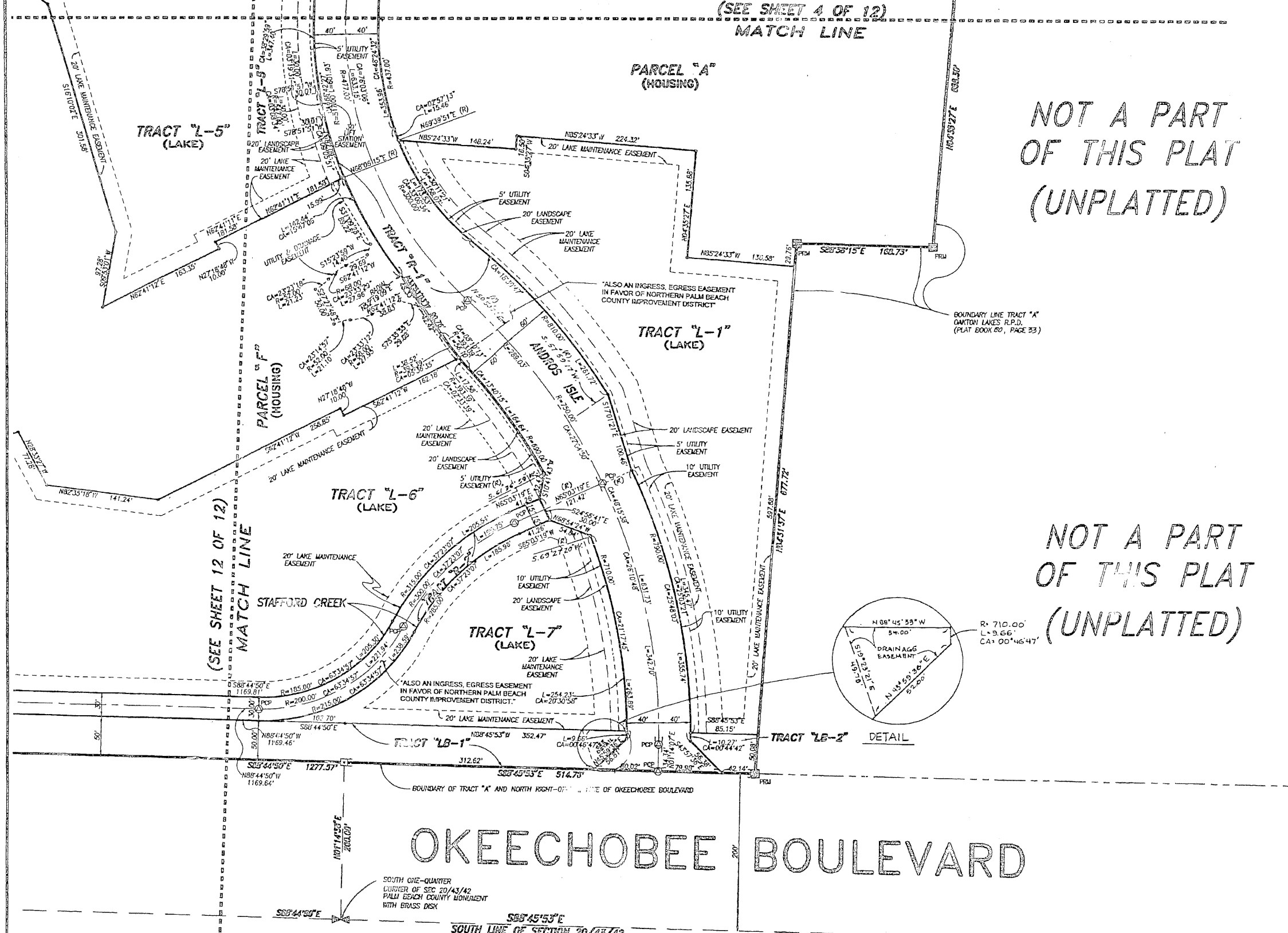


KEY MAP  
(NOT TO SCALE)

NOT A PART  
OF THIS PLAT  
(UNPLATTED)



TRACT "L-2" DETAIL



## OKEECHOBEE BOULEVARD

SOUTH ONE-QUARTER  
CORNER OF SEC 20/43/42  
PALM BEACH COUNTY MONUMENT  
WITH BRASS DISK

S89°45'53\"/>

- SURVEYOR'S NOTES AND ALERTS:**
1. THE BASE BEARING (FB) FOR THIS PLAT IS THE ASSIGNED BEARING OF S89°44'50\"/>
  2. AT THOSE LOCATIONS WHERE UTILITY/DRAINAGE STRUCTURES ARE CONSTRUCTED OR EXIST, STAKEOUTS INDICATED AS PLANNED/EXISTING POINTS SHALL BE SET TO REFERENCE THE PLATTED P.C.P. POSITION.
  3. LINES WHICH INTERSECT CURVES ARE NOT RADIAL UNLESS OTHERWISE NOTED.
  4. C/L DENOTES A CENTERLINE.
  5. P.D. DENOTES PLAT BOOK & PAGE.
  6. O.R.D. DENOTES OFFICIAL RECORDS BOOK.
  7. [Symbol] DENOTES A SET (#2424 PERMANENT REFERENCE MONUMENT (P.R.M.))
  8. [Symbol] DENOTES A SET (#2424 PERMANENT CONTROL POINT (P.C.P.))
  9. [Symbol] DENOTES A FOUND (#2424 PERMANENT REFERENCE MONUMENT (P.R.M.))
  10. [Symbol] DENOTES A FOUND (#2424 PERMANENT CONTROL POINT (P.C.P.))

THIS INSTRUMENT WAS PREPARED BY W.M. VAN CAMPEN, R.L.S., IN AND FOR THE OFFICES OF BENCH MARK LAND SURVEYING & MAPPING, INC., 4152 WEST BLUE HERON BOULEVARD, SUITE 121, ROYAL PALM BEACH, FLORIDA

**BENCH MARK**  
Land Surveying and Mapping, Inc.  
4152 West Blue Heron Blvd., Suite 121, Royal Palm Beach, FL 33404  
Tel: (407) 944-9228 Fax: (407) 944-2102

**RECORD PLAT**  
**ANDROS ISLE**

DOWN AM & SEC	FB	DATE 12-01-97	WO.#	P156
CHKD	FILE P156-200.dwg	SCALE 1" = 60'	SHEET	J OF 12