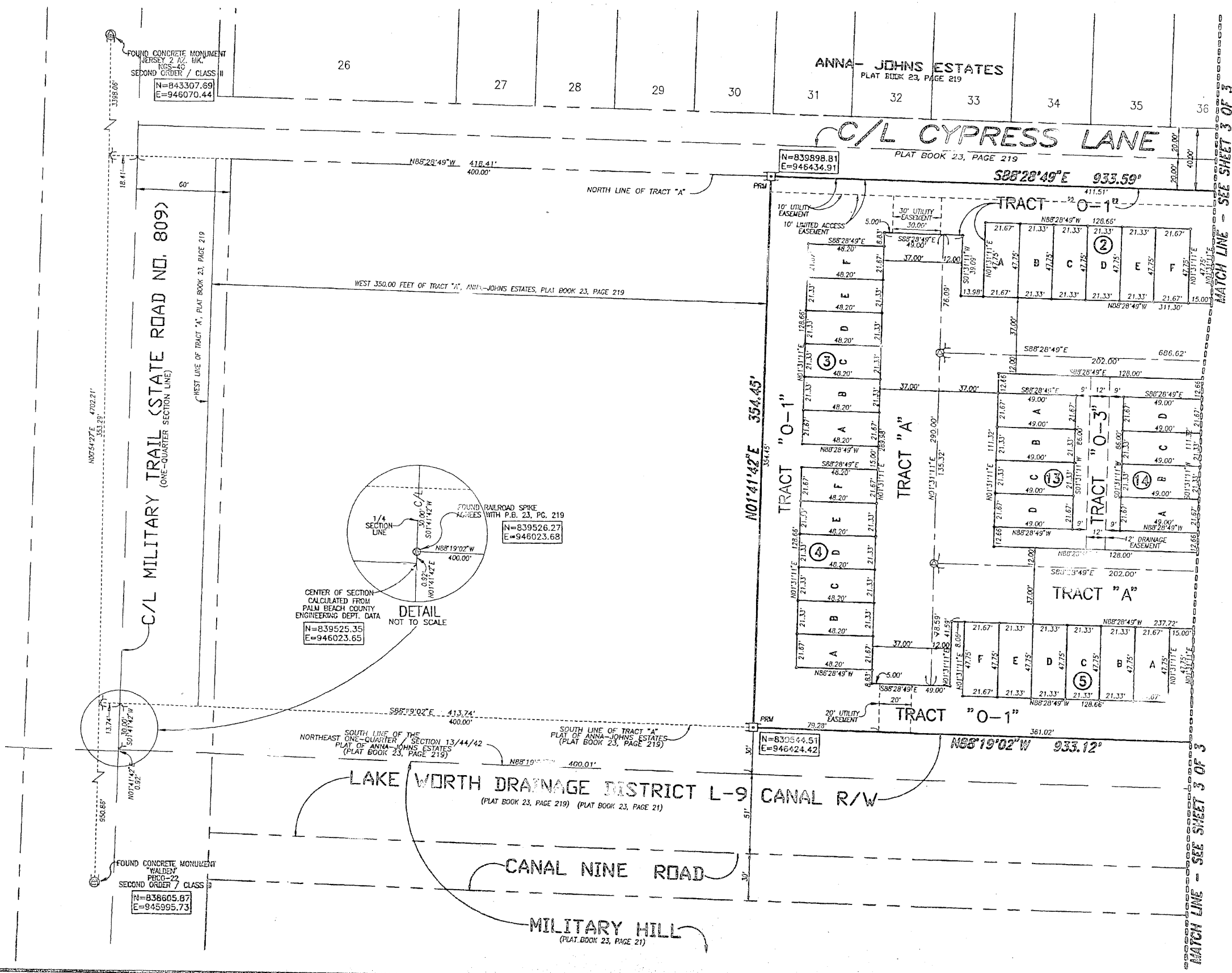


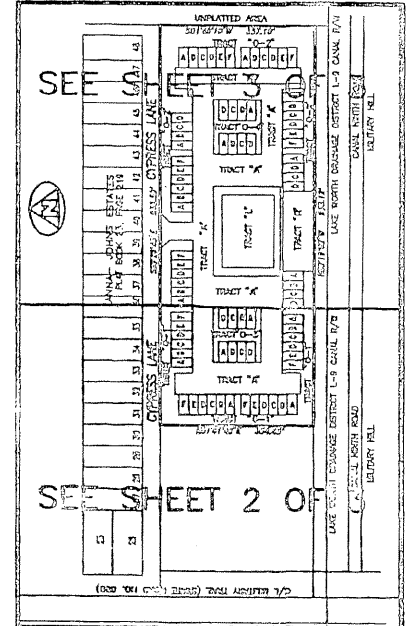
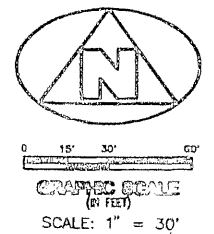
DECEMBER 1997 CYPRESS ESTATES OF PALM SPRINGS SHEET 2 of 3

123

BEING A REPLAT OF TRACT "A", LESS THE WEST 350 FEET THEREOF, AND A PORTION OF DONALD ROAD RIGHT-OF-WAY (NOW QUIT-CLAIMED), ANNA-JOHNS ESTATES, AS RECORDED IN PLAT BOOK 23, PAGE 219, PUBLIC RECORDS, PALM BEACH COUNTY, FLORIDA, AND LYING IN THE NORTHEAST ONE-QUARTER OF SECTION 15, TOWNSHIP 44 SOUTH, RANGE 42 EAST, VILLAGE OF PALM SPRINGS, PALM BEACH COUNTY, FLORIDA.



MATCH LINE - SEE SHEET 3 OF 3



KEY MAP NOT TO SCALE

- SURVEYOR'S NOTES AND LEGEND:**
- IN THOSE INSTANCES WHERE UTILITIES OR STRUCTURES ARE CONSTRUCTED IN CONFORMANCE WITH THE PLAT, PERMANENT CONTROL POINTS (P.C.P.), PERMANENT STRONGLY IMPROVED (P.S.I.) CONTROL POINTS WILL BE SET TO REFERENCE THE PLATTED P.C.P. POINTS.
 - LANES WHICH INTERSECT CURVES ARE NOT RADIAL, UNLESS OTHERWISE NOTED.
 - C/L DENOTES CENTERLINE
 - PRM DENOTES A SET (2424) PERMANENT REFERENCE MONUMENT (P.R.M.)
 - PCP DENOTES A SET (2424) PERMANENT CONTROL POINT (P.C.P.)
 - H-837645.17 = NORTHERN COORDINATE
E-838605.73 = EASTING COORDINATE
 - THE BEARINGS SHOWN HEREON ARE BASED ON STATE PLATE GRID ASSUMES ACCORDING TO THE TRANSVERSE MERCATOR PROJECTION OF THE FLORIDA EAST ZONE, NAD 83, AS PER THE 1990 ADJUSTMENT.

THIS INSTRUMENT WAS PREPARED BY W.M. R. VAN CAMPEN, R.L.S., IN AND FOR THE OFFICES OF BENCH MARK LAND SURVEYING & MAPPING, INC., 4152 WEST BLUE HERON BOULEVARD, SUITE 121, RIVERA BEACH, FLORIDA 33414. TEL: (407) 844-2859 FAX: (407) 844-2143

BENCH MARK
Land Surveying and Mapping, Inc.
4152 West Blue Heron Blvd, Suite 121, Riviera Beach, FL 33414
Tel: (407) 844-2859 Fax: (407) 844-2143

RECORDED PLAT
CYPRESS ESTATES
OF PALM SPRINGS

OWN	SEC	FD	DATE	S	LINE	NO.	WD.	PK.
BOOK	FILE		SCALE	1" = 30'				SHEET 2 OF 3