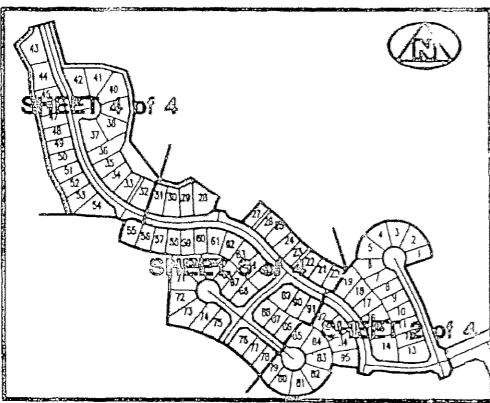
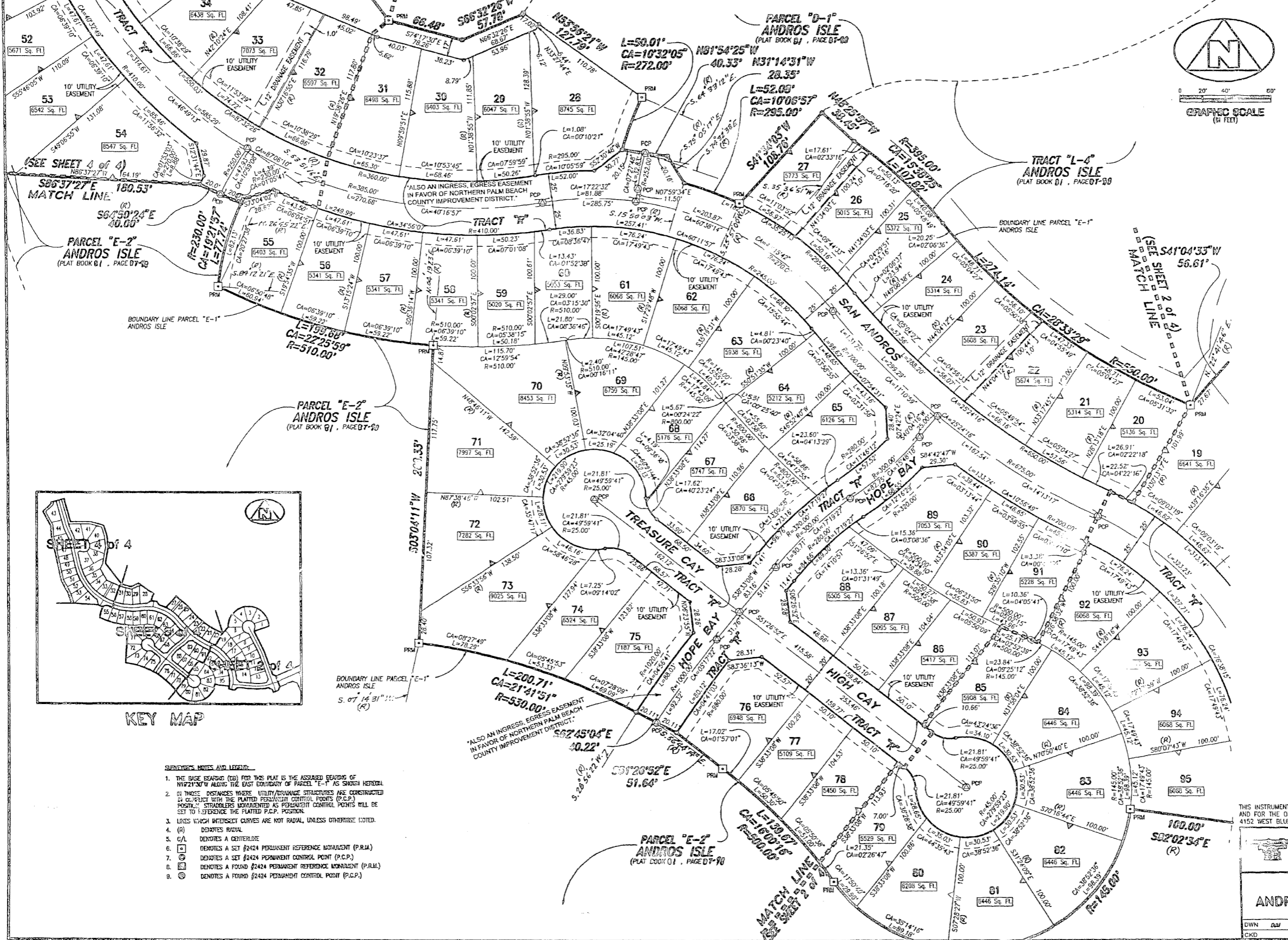


(A PART OF A RESIDENTIAL PLANNED DEVELOPMENT)

BEING A RE-PLAT OF PARCEL "E-1", ANDROS ISLE, RECORDED IN PLAT BOOK 91, PAGE 07-98, AND LYING IN SECTION 20, TOWNSHIP 43 SOUTH, RANGE 42 EAST, CITY OF WEST PALM BEACH, PALM BEACH COUNTY, FLORIDA



KEY MAP

- SURVEYOR'S NOTES AND LEGEND:**
1. THE BASE BEARING (BB) FOR THIS PLAT IS THE ASSUMED BEARING OF N10°21'30"W ALONG THE EAST BOUNDARY OF PARCEL "E-1" AS SHOWN HEREON.
 2. (R) THOSE DISTANCES MARKED UTILITY/EGRESS STRUCTURES ARE CONSTRUCTED IN ACCORDANCE WITH THE PLANNED PERMANENT CONTROL POINTS (P.C.P.) POSITION. STRADDLERS MONUMENTED AS PERMANENT CONTROL POINTS WILL BE SET TO REFERENCE THE PLATTED P.C.P. POSITION.
 3. LINES WHICH INTERSECT CURVES ARE NOT RADIAL, UNLESS OTHERWISE NOTED.
 4. (R) DENOTES RADIAL.
 5. CA DENOTES A CENTERLINE.
 6. (P.M.) DENOTES A SET #2424 PERMANENT REFERENCE MONUMENT (P.R.M.).
 7. (P.C.P.) DENOTES A SET #2424 PERMANENT CONTROL POINT (P.C.P.).
 8. (P.M.) DENOTES A FOUND #2424 PERMANENT REFERENCE MONUMENT (P.R.M.).
 9. (P.C.P.) DENOTES A FOUND #2424 PERMANENT CONTROL POINT (P.C.P.).

THIS INSTRUMENT WAS PREPARED BY WM. R. VAN CAMPEN, R.L.S., IN AND FOR THE OFFICES OF BENCH MARK LAND SURVEYING & MAPPING, INC., 4152 WEST BLUE HERON BOULEVARD, SUITE 121, RIVIERA BEACH, FLORIDA.

BENCH MARK
Land Surveying and Mapping, Inc.
4152 West Blue Heron Blvd, Suite 121, Riviera Beach, FL 33404
Ph: (407) 844-9859 Fax: (407) 844-9859

RECORD PLAT
ANDROS ISLE PARCEL "E-1"

DWN	AW	FB	DATE 12-01-96	WO.#	PROJ#1
CKD			FILE PLAT E-1.dwg	SCALE 1" = 40'	SHEET 3 OF 4