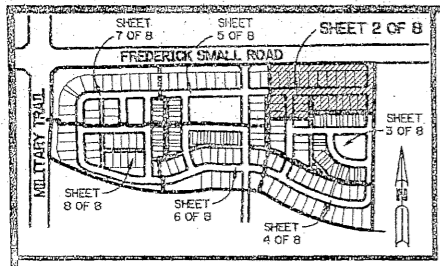


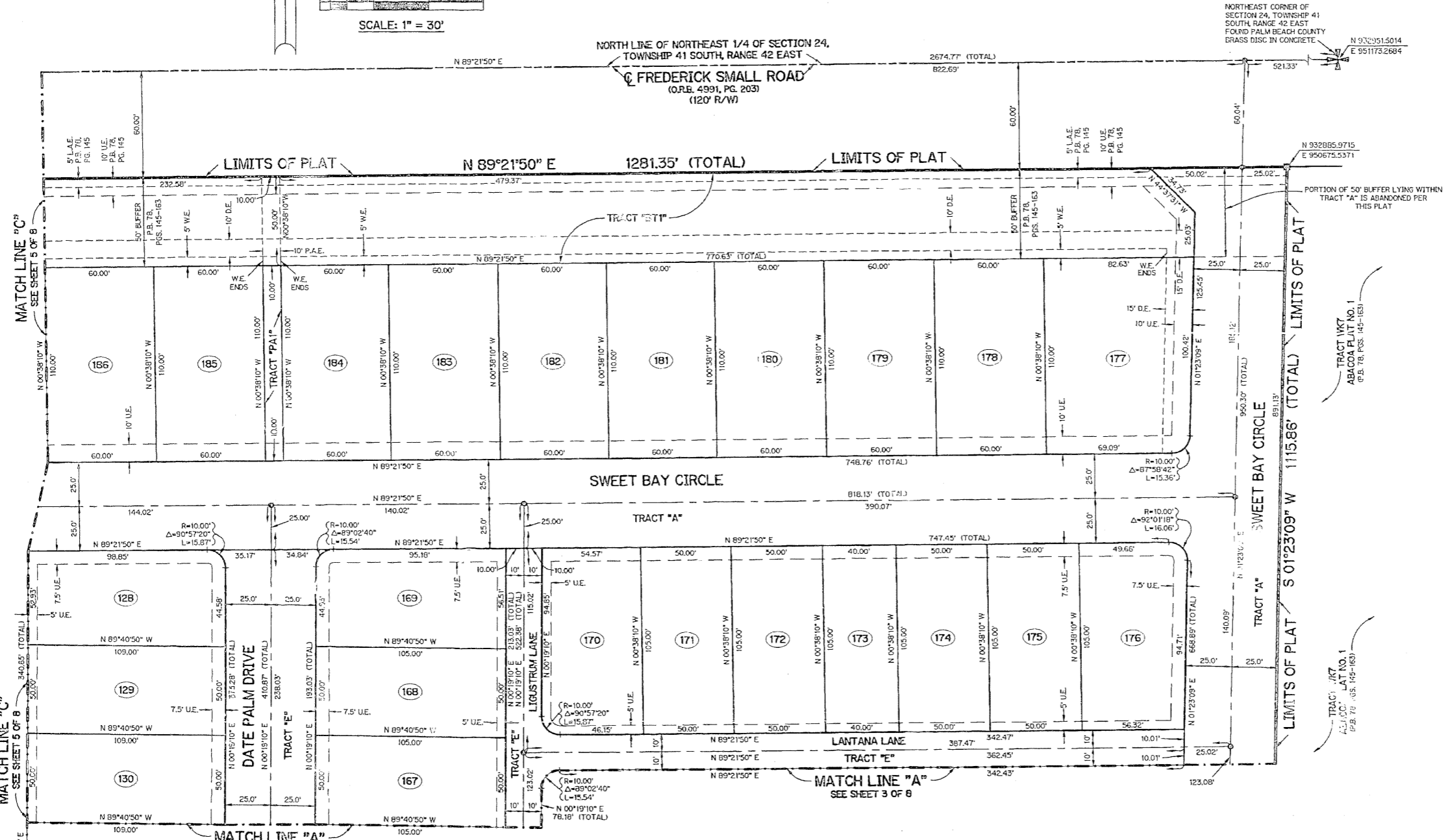
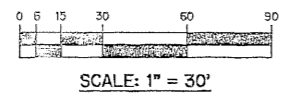
# NEWHAVEN - 7A AT ABACOA

BEING A REPLAT OF ALL OF TRACT RN7A ACCORDING TO THE PLAT OF ABACOA PLAT NO. 1, AS RECORDED IN PLAT BOOK 78, PAGES 145 THROUGH 163, INCLUSIVE, OF THE PUBLIC RECORDS OF PALM BEACH COUNTY, FLORIDA, LYING IN SECTION 24, TOWNSHIP 41 SOUTH, RANGE 42 EAST. TOWN OF JUPITER, PALM BEACH COUNTY, FLORIDA

SHEET 2 OF 8 JUNE, 1997



KEY MAP N.T.S.



TRACT	ACREAGE	LAND USE	TRACT	ACREAGE	LAND USE
LOT 1	0.165 AC.	REZ	LOT 110	0.041 AC.	REZ
LOT 2	0.167 AC.	REZ	LOT 111	0.041 AC.	REZ
LOT 3	0.155 AC.	REZ	LOT 112	0.041 AC.	REZ
LOT 4	0.155 AC.	REZ	LOT 113	0.041 AC.	REZ
LOT 5	0.156 AC.	REZ	LOT 114	0.066 AC.	REZ
LOT 6	0.157 AC.	REZ	LOT 115	0.066 AC.	REZ
LOT 7	0.157 AC.	REZ	LOT 116	0.041 AC.	REZ
LOT 8	0.155 AC.	REZ	LOT 117	0.041 AC.	REZ
LOT 9	0.156 AC.	REZ	LOT 118	0.041 AC.	REZ
LOT 10	0.155 AC.	REZ	LOT 119	0.041 AC.	REZ
LOT 11	0.154 AC.	REZ	LOT 120	0.066 AC.	REZ
LOT 12	0.153 AC.	REZ	LOT 121	0.115 AC.	REZ
LOT 13	0.153 AC.	REZ	LOT 122	0.100 AC.	REZ
LOT 14	0.152 AC.	REZ	LOT 123	0.125 AC.	REZ
LOT 15	0.152 AC.	REZ	LOT 124	0.100 AC.	REZ
LOT 16	0.151 AC.	REZ	LOT 125	0.125 AC.	REZ
LOT 17	0.210 AC.	REZ	LOT 126	0.125 AC.	REZ
LOT 18	0.217 AC.	REZ	LOT 127	0.121 AC.	REZ
LOT 19	0.193 AC.	REZ	LOT 128	0.134 AC.	REZ
LOT 20	0.156 AC.	REZ	LOT 129	0.125 AC.	REZ
LOT 21	0.163 AC.	REZ	LOT 130	0.125 AC.	REZ
LOT 22	0.171 AC.	REZ	LOT 131	0.100 AC.	REZ
LOT 23	0.179 AC.	REZ	LOT 132	0.125 AC.	REZ
LOT 24	0.165 AC.	REZ	LOT 133	0.125 AC.	REZ
LOT 25	0.184 AC.	REZ	LOT 134	0.160 AC.	REZ
LOT 26	0.165 AC.	REZ	LOT 135	0.122 AC.	REZ
LOT 27	0.165 AC.	REZ	LOT 136	0.121 AC.	REZ
LOT 28	0.220 AC.	REZ	LOT 137	0.215 AC.	REZ
LOT 29	0.228 AC.	REZ	LOT 138	0.067 AC.	REZ
LOT 30	0.182 AC.	REZ	LOT 139	0.041 AC.	REZ
LOT 31	0.174 AC.	REZ	LOT 140	0.041 AC.	REZ
LOT 32	0.170 AC.	REZ	LOT 141	0.066 AC.	REZ
LOT 33	0.170 AC.	REZ	LOT 142	0.066 AC.	REZ
LOT 34	0.170 AC.	REZ	LOT 143	0.041 AC.	REZ
LOT 35	0.170 AC.	REZ	LOT 144	0.041 AC.	REZ
LOT 36	0.170 AC.	REZ	LOT 145	0.066 AC.	REZ
LOT 37	0.170 AC.	REZ	LOT 146	0.066 AC.	REZ
LOT 38	0.186 AC.	REZ	LOT 147	0.041 AC.	REZ
LOT 39	0.189 AC.	REZ	LOT 148	0.041 AC.	REZ
LOT 40	0.192 AC.	REZ	LOT 149	0.066 AC.	REZ
LOT 41	0.259 AC.	REZ	LOT 150	0.066 AC.	REZ
LOT 42	0.121 AC.	REZ	LOT 151	0.041 AC.	REZ
LOT 43	0.122 AC.	REZ	LOT 152	0.041 AC.	REZ
LOT 44	0.137 AC.	REZ	LOT 153	0.066 AC.	REZ
LOT 45	0.117 AC.	REZ	LOT 154	0.066 AC.	REZ
LOT 46	0.126 AC.	REZ	LOT 155	0.041 AC.	REZ
LOT 47	0.126 AC.	REZ	LOT 156	0.041 AC.	REZ
LOT 48	0.101 AC.	REZ	LOT 157	0.066 AC.	REZ
LOT 49	0.126 AC.	REZ	LOT 158	0.066 AC.	REZ
LOT 50	0.126 AC.	REZ	LOT 159	0.041 AC.	REZ
LOT 51	0.126 AC.	REZ	LOT 160	0.041 AC.	REZ
LOT 52	0.148 AC.	REZ	LOT 161	0.066 AC.	REZ
LOT 53	0.150 AC.	REZ	LOT 162	0.066 AC.	REZ
LOT 54	0.133 AC.	REZ	LOT 163	0.041 AC.	REZ
LOT 55	0.146 AC.	REZ	LOT 164	0.041 AC.	REZ
LOT 56	0.131 AC.	REZ	LOT 165	0.066 AC.	REZ
LOT 57	0.132 AC.	REZ	LOT 166	0.135 AC.	REZ
LOT 58	0.122 AC.	REZ	LOT 167	0.121 AC.	REZ
LOT 59	0.122 AC.	REZ	LOT 168	0.121 AC.	REZ
LOT 60	0.135 AC.	REZ	LOT 169	0.134 AC.	REZ
LOT 61	0.150 AC.	REZ	LOT 170	0.152 AC.	REZ
LOT 62	0.144 AC.	REZ	LOT 171	0.121 AC.	REZ
LOT 63	0.130 AC.	REZ	LOT 172	0.121 AC.	REZ
LOT 64	0.156 AC.	REZ	LOT 173	0.096 AC.	REZ
LOT 65	0.140 AC.	REZ	LOT 174	0.121 AC.	REZ
LOT 66	0.140 AC.	REZ	LOT 175	0.121 AC.	REZ
LOT 67	0.121 AC.	REZ	LOT 176	0.140 AC.	REZ
LOT 68	0.121 AC.	REZ	LOT 177	0.203 AC.	REZ
LOT 69	0.121 AC.	REZ	LOT 178	0.152 AC.	REZ
LOT 70	0.137 AC.	REZ	LOT 179	0.152 AC.	REZ
LOT 71	0.121 AC.	REZ	LOT 180	0.152 AC.	REZ
LOT 72	0.121 AC.	REZ	LOT 181	0.152 AC.	REZ
LOT 73	0.150 AC.	REZ	LOT 182	0.152 AC.	REZ
LOT 74	0.129 AC.	REZ	LOT 183	0.152 AC.	REZ
LOT 75	0.122 AC.	REZ	LOT 184	0.152 AC.	REZ
LOT 76	0.172 AC.	REZ	LOT 185	0.152 AC.	REZ
LOT 77	0.156 AC.	REZ	LOT 186	0.152 AC.	REZ
LOT 78	0.121 AC.	REZ	LOT 187	0.152 AC.	REZ
LOT 79	0.154 AC.	REZ	LOT 188	0.199 AC.	REZ
LOT 80	0.158 AC.	REZ	BT1	0.871 AC.	EXZ
LOT 81	0.121 AC.	REZ	BT2	2.235 AC.	EXZ
LOT 82	0.121 AC.	REZ	OS1	0.031 AC.	EXZ
LOT 83	0.121 AC.	REZ	OS2	0.036 AC.	EXZ
LOT 84	0.123 AC.	REZ	OS3	0.188 AC.	EXZ
LOT 85	0.056 AC.	REZ	OS4	0.031 AC.	EXZ
LOT 86	0.041 AC.	REZ	OS5	0.046 AC.	EXZ
LOT 87	0.041 AC.	REZ	OS6	0.074 AC.	EXZ
LOT 88	0.066 AC.	REZ	OS7	0.038 AC.	EXZ
LOT 89	0.056 AC.	REZ	OS8	0.050 AC.	EXZ
LOT 90	0.041 AC.	REZ	OS9	0.031 AC.	EXZ
LOT 91	0.041 AC.	REZ	OS10	0.037 AC.	EXZ
LOT 92	0.066 AC.	REZ	OS11	1.022 AC.	EXZ
LOT 93	0.066 AC.	REZ	OS12	0.233 AC.	EXZ
LOT 94	0.041 AC.	REZ	OS13	0.104 AC.	EXZ
LOT 95	0.041 AC.	REZ	OS14	0.079 AC.	EXZ
LOT 96	0.066 AC.	REZ	PA1	0.025 AC.	EXZ
LOT 97	0.056 AC.	REZ	PA2	0.025 AC.	EXZ
LOT 98	0.041 AC.	REZ	PA3	0.025 AC.	EXZ
LOT 99	0.041 AC.	REZ	PA4	0.037 AC.	EXZ
LOT 100	0.056 AC.	REZ	PA5	0.029 AC.	EXZ
LOT 101	0.056 AC.	REZ	PA6	0.040 AC.	EXZ
LOT 102	0.041 AC.	REZ	PA7	0.040 AC.	EXZ
LOT 103	0.041 AC.	REZ	PAB	0.039 AC.	EXZ
LOT 104	0.056 AC.	REZ	PAC	0.061 AC.	EXZ
LOT 105	0.056 AC.	REZ	TRACT "A"	4.940 AC.	EXZ
LOT 106	0.041 AC.	REZ	TRACT "B"	1.407 AC.	EXZ
LOT 107	0.041 AC.	REZ	TRACT "C"	0.472 AC.	EXZ
LOT 108	0.067 AC.	REZ	TRACT "D"	0.738 AC.	EXZ
LOT 109	0.066 AC.	REZ	TRACT "E"	2.510 AC.	EXZ
			TRACT "F"	4.790 AC.	EXZ

THIS INSTRUMENT PREPARED BY PERRY C. WHITE, P.S.M. 4213, STATE OF FLORIDA LAWSON, NOBLE AND WEBB, INC. ENGINEERS PLANNERS SURVEYORS 420 COLUMBIA DRIVE WEST PALM BEACH, FLORIDA

NOTE: COORDINATES SHOWN ARE GRID COORDINATES DATUM - NAD 83 (1990 ADJUSTMENT) ZONE - FLORIDA EAST ZONE LINEAR UNIT - U.S. SURVEY FEET COORDINATE SYSTEM 1983 STATE PLANE TRANSVERSE MERCATOR PROJECTION ALL DISTANCES ARE GRADED SCALE FACTOR = 1.0000077 N 89°21'50" E (PLAT BEARING) N 89°21'52" E (GRID BEARING) 0°00'02" = BEARING ROTATION - COUNTER CLOCKWISE (PLAT TO GRID)

LEGEND:

- - FOUND PERMANENT REFERENCE MONUMENT, PSM #3915
- - SET PERMANENT REFERENCE MONUMENT, PSM #4213
- - SET PERMANENT CONTROL POINT, PSM 34213
- △ - DELTA ANGLE
- BT - BUFFER TRACT
- CL - CENTERLINE
- D.E. - DRAINAGE EASEMENT
- D.W.E. - DRIVEWAY EASEMENT
- L - ARC LENGTH
- L.A.E. - LIMITED ACCESS EASEMENT
- P.A.E. - PEDESTRIAN ACCESS EASEMENT
- REZ - RESIDENTIAL
- EXZ - EXEMPT ACREAGE
- N.R. - NOT RADIAL
- N.T.S. - NOT TO SCALE
- OS - OPEN SPACE TRACT
- OR.B. - OFFICIAL RECORD BOOK
- PA - PEDESTRIAN ACCESS TRACT
- P.B. - PLAT BOOK
- P.C.S. - PAGES
- P.S.M. - PROFESSIONAL SURVEYOR AND MAPPER
- R - RADIUS
- R/W - RIGHT-OF-WAY
- S.T. - SURVEY TIE
- U.E. - UTILITY EASEMENT
- W.E. - WALL EASEMENT
- N 73°48'01" E - DENOTES STATE PLANE COORDINATES
- E 903258.23026