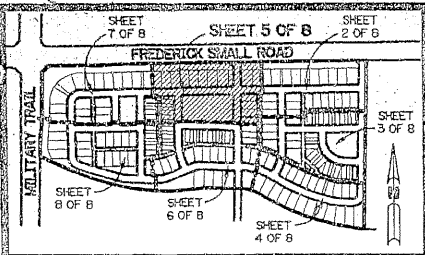


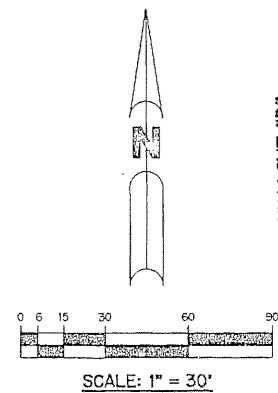
NEWHAVEN - 7A AT ABACOA

BEING A REPLAT OF ALL OF TRACT RN7A ACCORDING TO THE PLAT OF ABACOA PLAT NO. 1, AS RECORDED IN PLAT BOOK 78, PAGES 145 THROUGH 163, INCLUSIVE, OF THE PUBLIC RECORDS OF PALM BEACH COUNTY, FLORIDA, LYING IN SECTION 24, TOWNSHIP 41 SOUTH, RANGE 42 EAST. TOWN OF JUPITER, PALM BEACH COUNTY, FLORIDA

SHEET 5 OF 8 JUNE, 1997

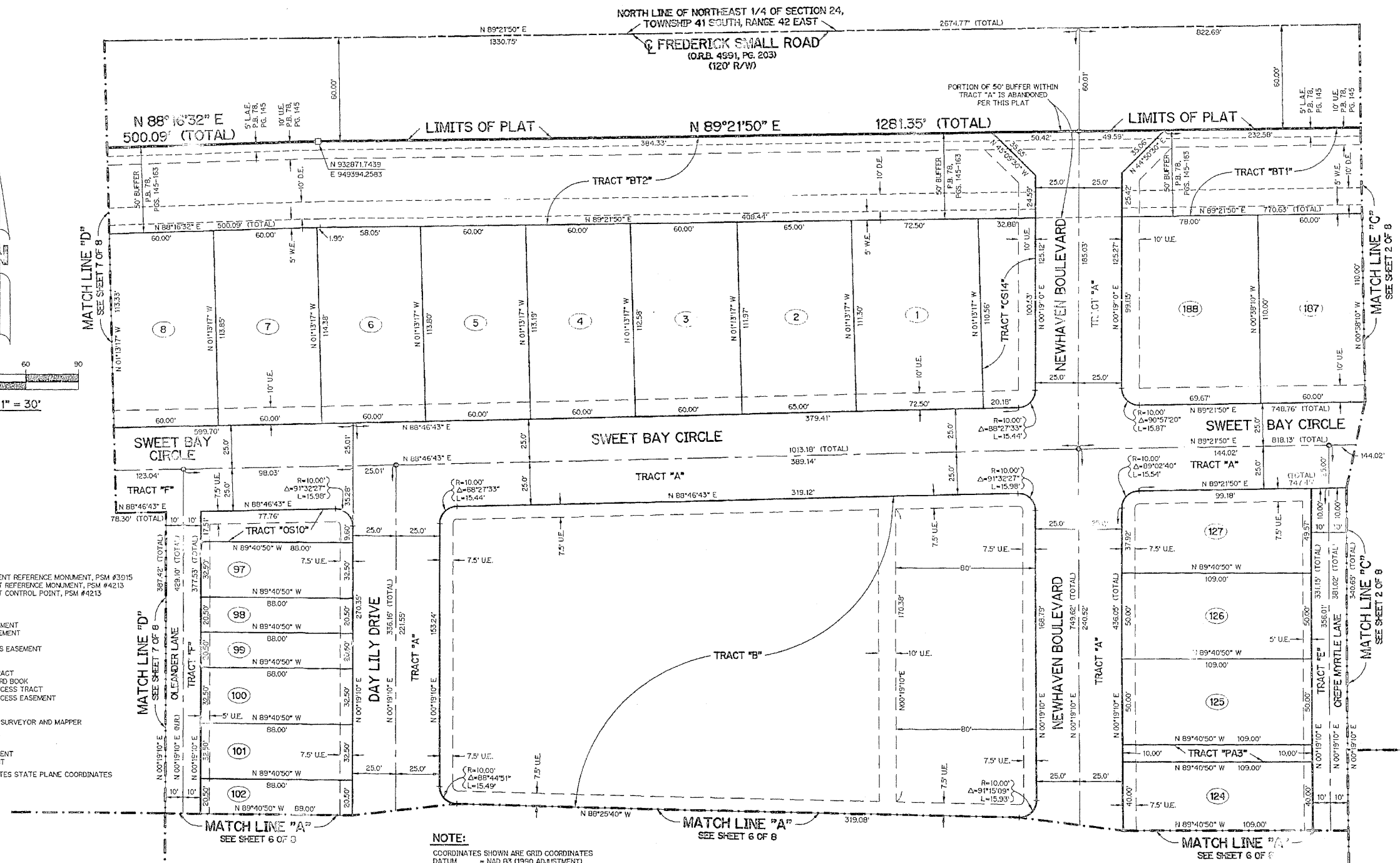


KEY MAP N.T.S.



SCALE: 1" = 30'

- LEGEND:**
- - FOUND PERMANENT REFERENCE MONUMENT, PSM #3915
 - - SET PERMANENT REFERENCE MONUMENT, PSM #4213
 - △ - SET PERMANENT CONTROL POINT, PSM #4213
 - Δ - DELTA ANGLE
 - BT - BUFFER TRACT
 - C - CENTERLINE
 - D.E. - DRAINAGE EASEMENT
 - D.W.E. - DRIVEWAY EASEMENT
 - L - ARC LENGTH
 - L.A.E. - LIMITED ACCESS EASEMENT
 - N.R. - NOT RADIAL
 - N.T.S. - NOT TO SCALE
 - OS - OPEN SPACE TRACT
 - O.R.B. - OFFICIAL RECORD BOOK
 - PA - PEDESTRIAN ACCESS TRACT
 - P.A.E. - PEDESTRIAN ACCESS EASEMENT
 - P.B. - PLAT BOOK
 - PGS. - PAGES
 - P.S.J. - PROFESSIONAL SURVEYOR AND MAPPER
 - R - RADIUS
 - R/W - RIGHT-OF-WAY
 - S.T. - SURVEY TIE
 - U.E. - UTILITY EASEMENT
 - W.E. - WALL EASEMENT
 - N 737648.0171 E 905258.2326 - DENOTES STATE PLANE COORDINATES



NOTE:

COORDINATES SHOWN ARE GRID COORDINATES
 DATUM = NAD 83 (1983 ADJUSTMENT)
 ZONE = FLORIDA EAST ZONE
 LINEAR UNIT = U.S. SURVEY FEET
 COORDINATE SYSTEM 1983 STATE PLANE
 TRANSVERSE MERCATOR PROJECTION
 ALL DISTANCES ARE GROUND
 SCALE FACTOR = 1.0000077
 N 89°21'50" E (PLAT BEARING)
 N 89°21'50" E (GRID BEARING)
 0°00'02" = BEARING ROTATION - COUNTER CLOCKWISE (PLAT TO GRID)

THIS INSTRUMENT PREPARED BY
 PERRY C. WHITE, P.S.M. 4213, STATE OF FLORIDA
 LAWSON, NOBLE AND WEBB, INC.
 ENGINEERS PLANNERS SURVEYORS
 420 COLUMBIA DRIVE
 WEST PALM BEACH, FLORIDA