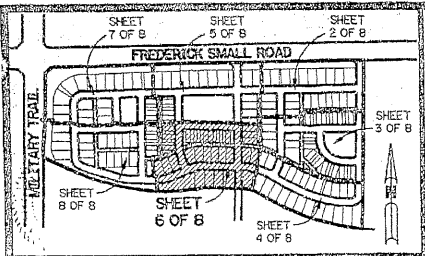


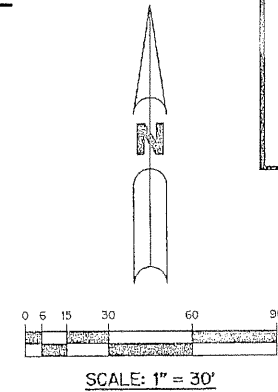
NEWHAVEN - 7A AT ABACOA

BEING A REPLAT OF ALL OF TRACT R7A ACCORDING TO THE PLAT OF ABACOA PLAT NO. 1, AS RECORDED IN PLAT BOOK 78, PAGES 145 THROUGH 163, INCLUSIVE, OF THE PUBLIC RECORDS OF PALM BEACH COUNTY, FLORIDA, LYING IN SECTION 24, TOWNSHIP 41 SOUTH, RANGE 42 EAST, TOWN OF JUPITER, PALM BEACH COUNTY, FLORIDA

SHEET 6 OF 8 JUNE, 1997



KEY MAP



SCALE: 1" = 30'

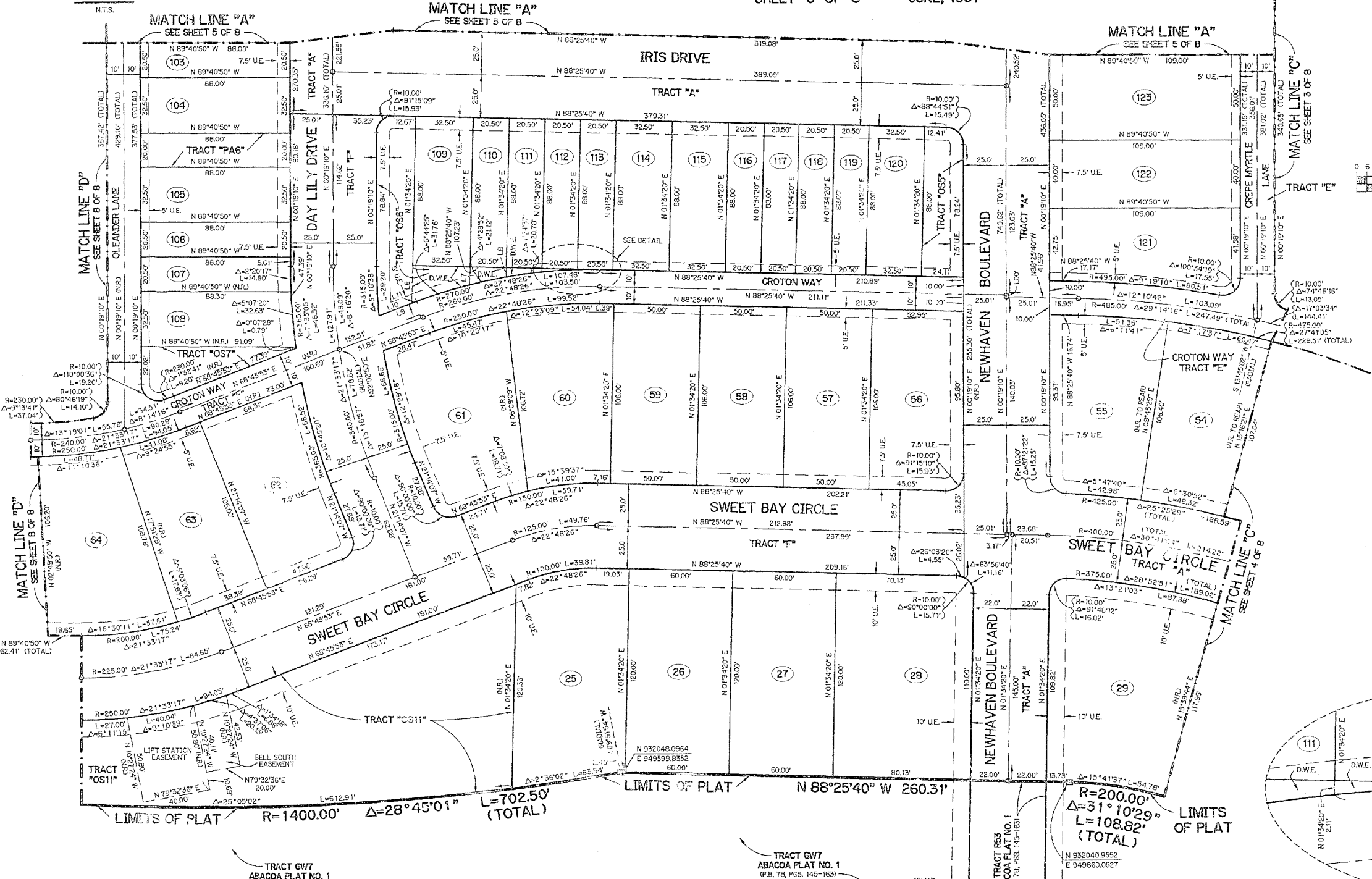
NOTE:

COORDINATES SHOWN ARE GRID COORDINATES DATUM = NAD 83 (1990 ADJUSTMENT) ZONE = FLORIDA EAST ZONE LINEAR UNIT = U.S. SURVEY FEET COORDINATE SYSTEM 1983 STATE PLANE TRANSVERSE MERCATOR PROJECTION ALL DISTANCES ARE GROUND SCALE FACTOR = 1.0000077 N 89°21'50" E (PLAT BEARING) N 89°21'52" E (GRID BEARING) 0°00'00" = BEARING ROTATION - COUNTER CLOCKWISE (PLAT TO GRID)

LEGEND:

- - FOUND PERMANENT REFERENCE MONUMENT, PSM #3915
- - SET PERMANENT REFERENCE MONUMENT, PSM #4213
- △ - SET PERMANENT CONTROL POINT, PSM #4213
- BT - BUFFER TRACT
- C - CENTERLINE
- D.E. - DRAINAGE EASEMENT
- D.W.E. - DRIVEWAY EASEMENT
- ARC LENGTH
- L.A.E. - LIMITED ACCESS EASEMENT
- N.R. - NOT RADIAL
- N.T.S. - NOT TO SCALE
- OS - OPEN SPACE TRACT
- ORB - OFFICIAL RECORD BOOK
- PA - PEDESTRIAN ACCESS TRACT
- P.A.E. - PEDESTRIAN ACCESS EASEMENT
- PIB - PLAT BOOK
- PGS - PAGES
- P.S.M. - PROFESSIONAL SURVEYOR AND MAPPER
- R - RADIUS
- R/W - RIGHT-OF-WAY
- S.T. - SURVEY TIE
- U.E. - UTILITY EASEMENT
- W.E. - WALL EASEMENT
- N 737648.0171 E 905258.2526 - DENOTES STATE PLANE COORDINATES

DETAIL N.T.S. SEE ABOVE LEFT



LINE	DIRECTION	DISTANCE
L6	N 01°34'20" E	22.19'
L7	N 01°34'20" E	10.55'
L8	N 01°34'20" E	5.50'
L9	N 68°45'53" E	23.34'
L10	N 68°45'53" E	20.56'
L11	N 68°45'53" E	2.78'

TRACT GW7 ABACOA PLAT NO. 1 (P.B. 78, PGS. 145-163)

TRACT GW7 ABACOA PLAT NO. 1 (P.B. 78, PGS. 145-163)

TRACT R53 ABACOA PLAT NO. 1 (P.B. 78, PGS. 145-163)

TRACT GW6 ABACOA PLAT NO. 1 (P.B. 78, PGS. 145-163)

THIS INSTRUMENT PREPARED BY PERRY C. WHITE, P.S.M. 4213, STATE OF FLORIDA LAWSON, NOBLE AND WEBB, INC. ENGINEERS PLANNERS SURVEYORS 420 COLUMBIA DRIVE WEST PALM BEACH, FLORIDA