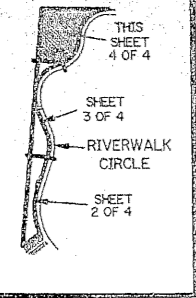
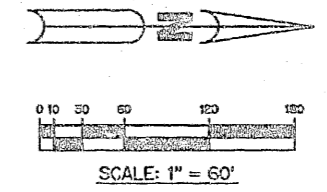


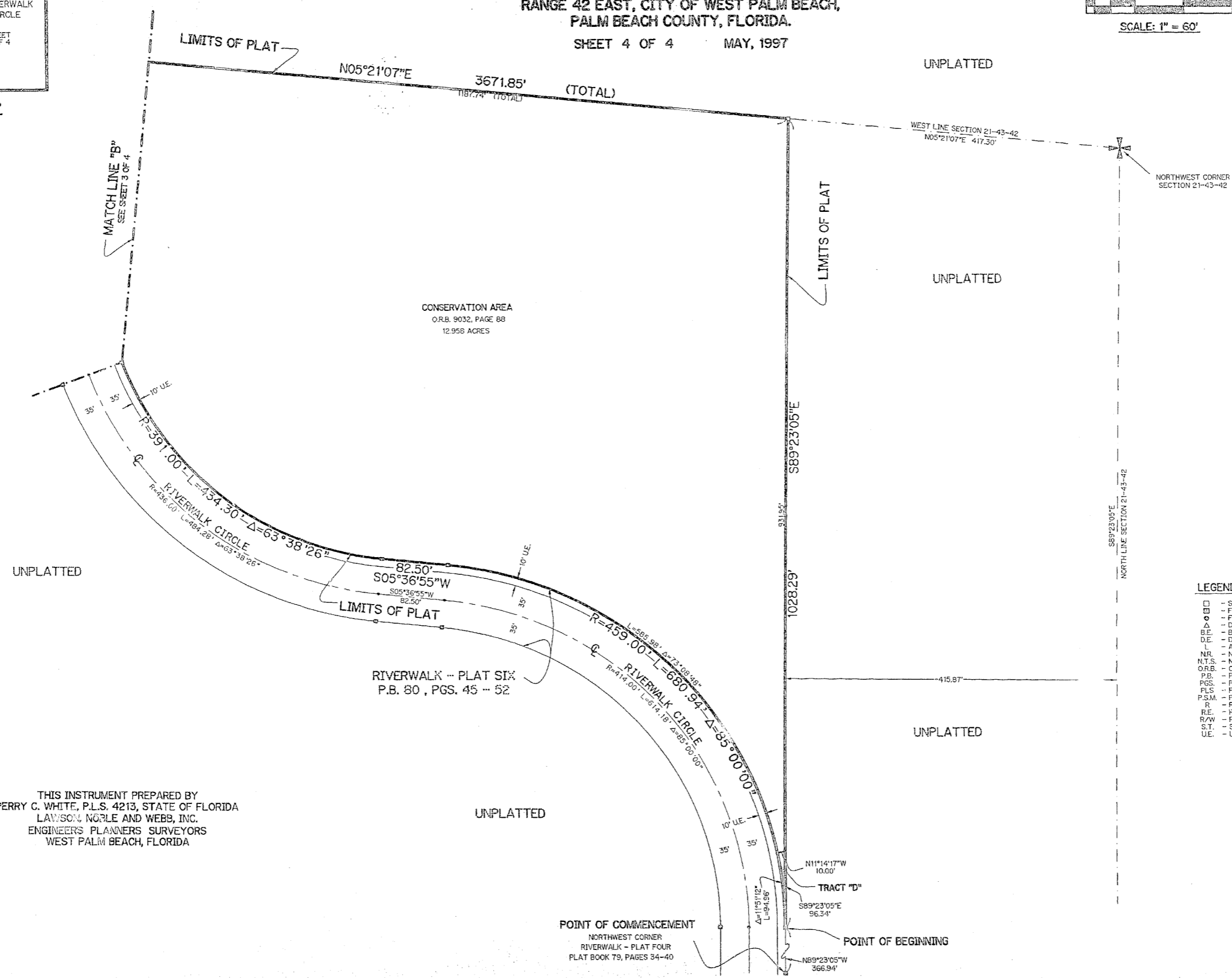
RIVERWALK - PLAT SIX - A

A PARCEL OF LAND LYING IN SECTION 21, TOWNSHIP 43 SOUTH,
RANGE 42 EAST, CITY OF WEST PALM BEACH,
PALM BEACH COUNTY, FLORIDA.

SHEET 4 OF 4 MAY, 1997



KEY MAP
N.T.S.



- LEGEND:**
- - SET PERMANENT REFERENCE MONUMENT, PLS #4213
 - - FOUND PERMANENT REFERENCE MONUMENT, PLS #4213
 - - FOUND PERMANENT CONTROL POINT, PLS #4213
 - Δ - DELTA ANGLE
 - B.E. - BUFFER EASEMENT
 - D.E. - DRAINAGE EASEMENT
 - L - ARC LENGTH
 - N.R. - NOT RADIAL
 - N.T.S. - NOT TO SCALE
 - O.R.B. - OFFICIAL RECORD BOOK
 - P.B. - PLAT BOOK
 - PGS. - PAGES
 - PLS. - PROFESSIONAL LAND SURVEYOR
 - P.S.M. - PROFESSIONAL SURVEYOR AND MAPPER
 - R - RADIUS
 - R.E. - RIVERWALK EASEMENT
 - R/W - RIGHT-OF-WAY
 - S.T. - SURVEY TIE
 - U.E. - UTILITY EASEMENT

THIS INSTRUMENT PREPARED BY
PERRY C. WHITE, P.L.S. 4213, STATE OF FLORIDA
LAWSON, NOBLE AND WEBB, INC.
ENGINEERS PLANNERS SURVEYORS
WEST PALM BEACH, FLORIDA