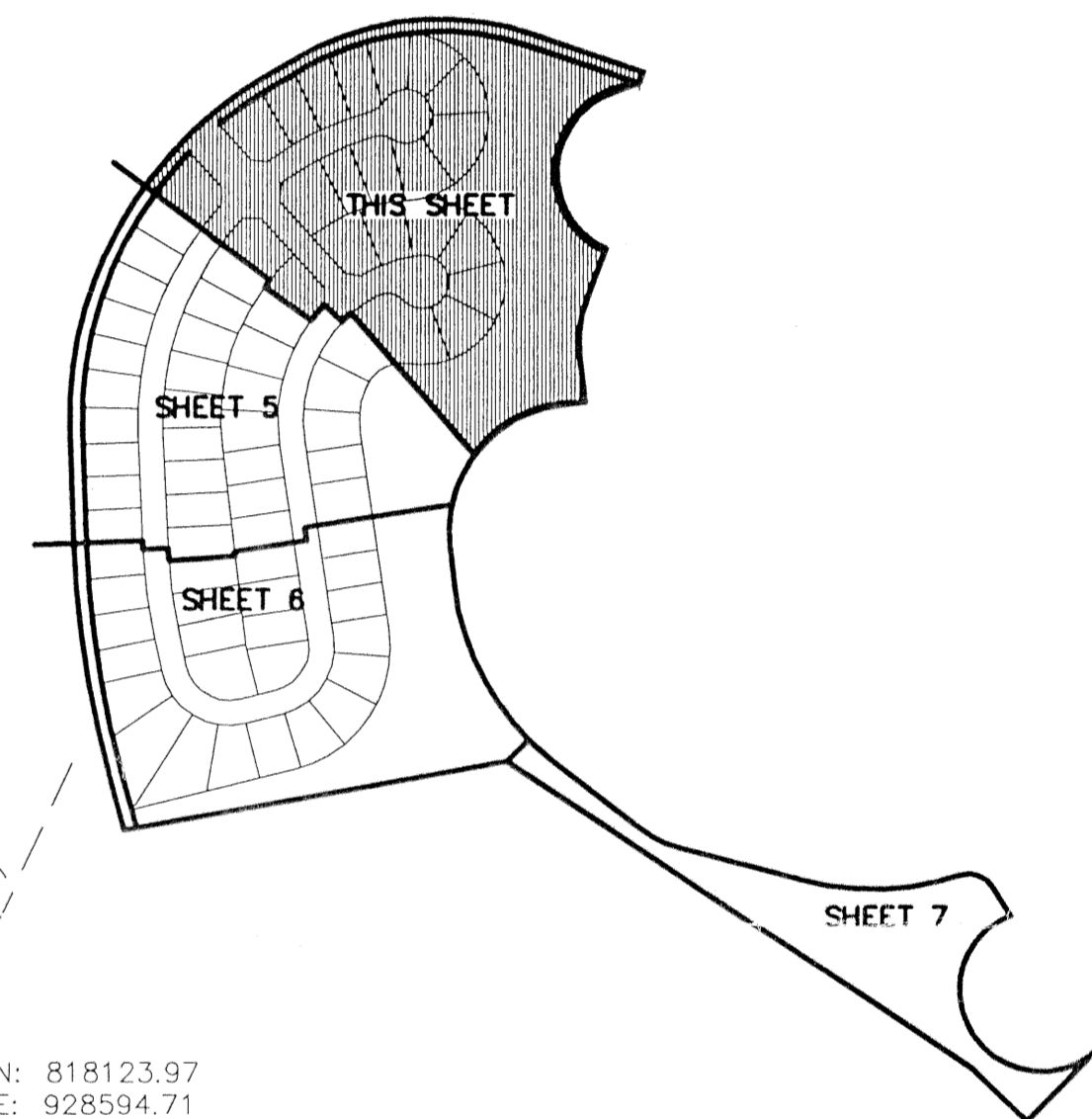


PET. 94-97
AWOC #0001
5/2/2/I

SHEET INDEX



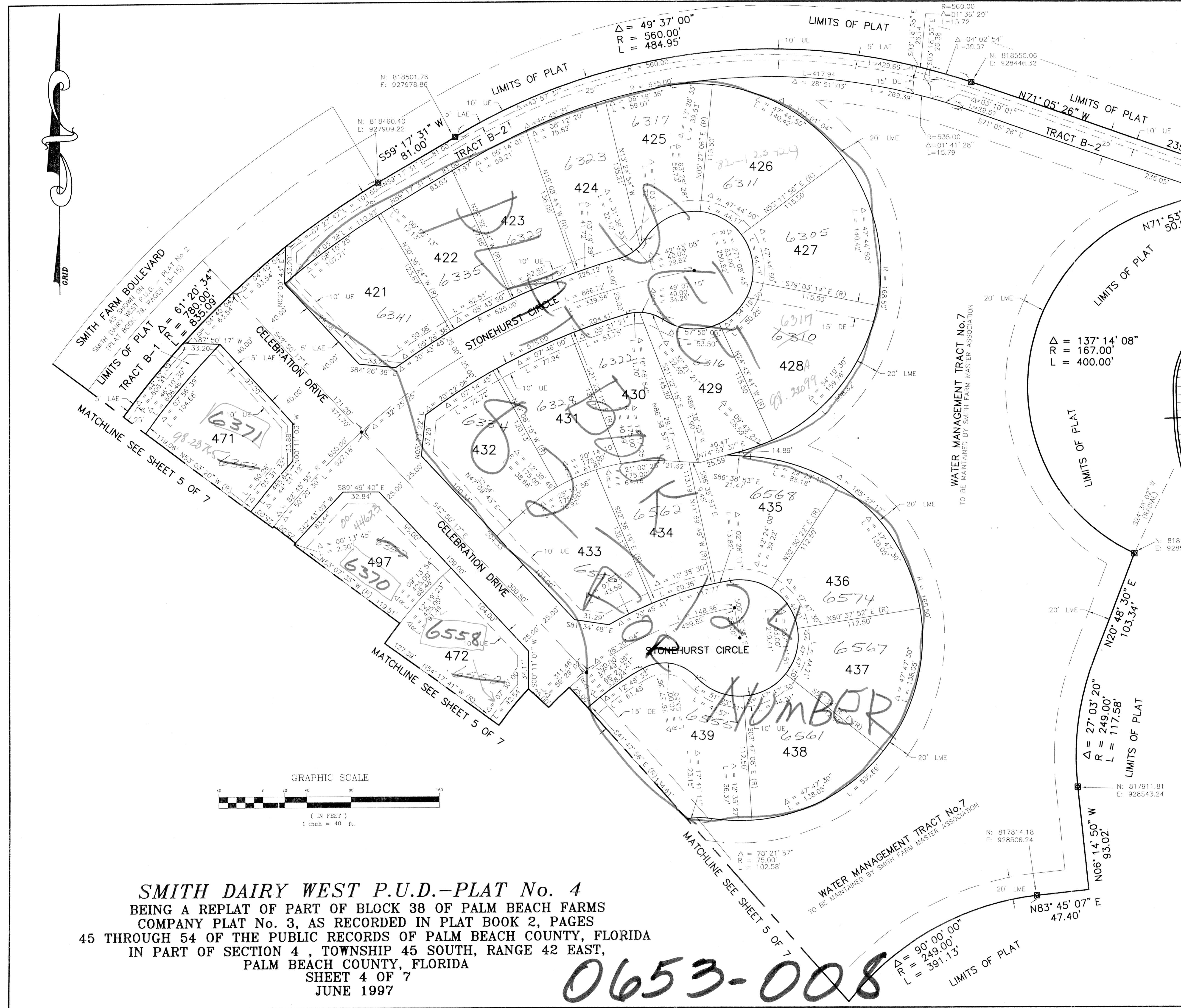
PARCEL F

8/1/73

- LEGEND:
- = PERMANENT REFERENCE MONUMENT 'P.L.S. 4828'
 - = PERMANENT CONTROL POINT 'P.C.P. 4828'
 - R = RADIUS
 - A = ARC LENGTH
 - Δ = DELTA (CENTRAL ANGLE)
 - PC = POINT OF CURVATURE
 - PT = POINT OF TANGENCY
 - PSM = PROFESSIONAL SURVEYOR & MAPPER
 - PLS = PROFESSIONAL LAND SURVEYOR
 - UE = UTILITY EASEMENT
 - DE = DRAINAGE EASEMENT
 - LME = LAKE MAINTENANCE EASEMENT
 - N = NORTHING (GRID)
 - E = EASTING (GRID)
 - (C) = CALCULATED
 - (R) = RADIAL
 - LAE = LIMITED ACCESS EASEMENT
 - LMAE = LAKE MAINTENANCE ACCESS EASEMENT

SCALE: 1"=40'
 DATE: JUNE 1997
 NMI NICK MILLER, INC.
 Surveying & Mapping Consultants

SMITH DAIRY WEST P.U.D. - PLAT No. 4
 2560 RCA Blvd., Suite 105
 Palm Beach Gardens, Florida 33410
 (561) 627-5200
 D.B.P.R. Business License No. 4318
 DRAWING NUMBER
 940148F



SUBDIVISION
 BOOK
 PAGE
 FLOOD ZONE
 ZONING
 DISTRICT
 ZIP CODE
 PUD NAME

0653-008