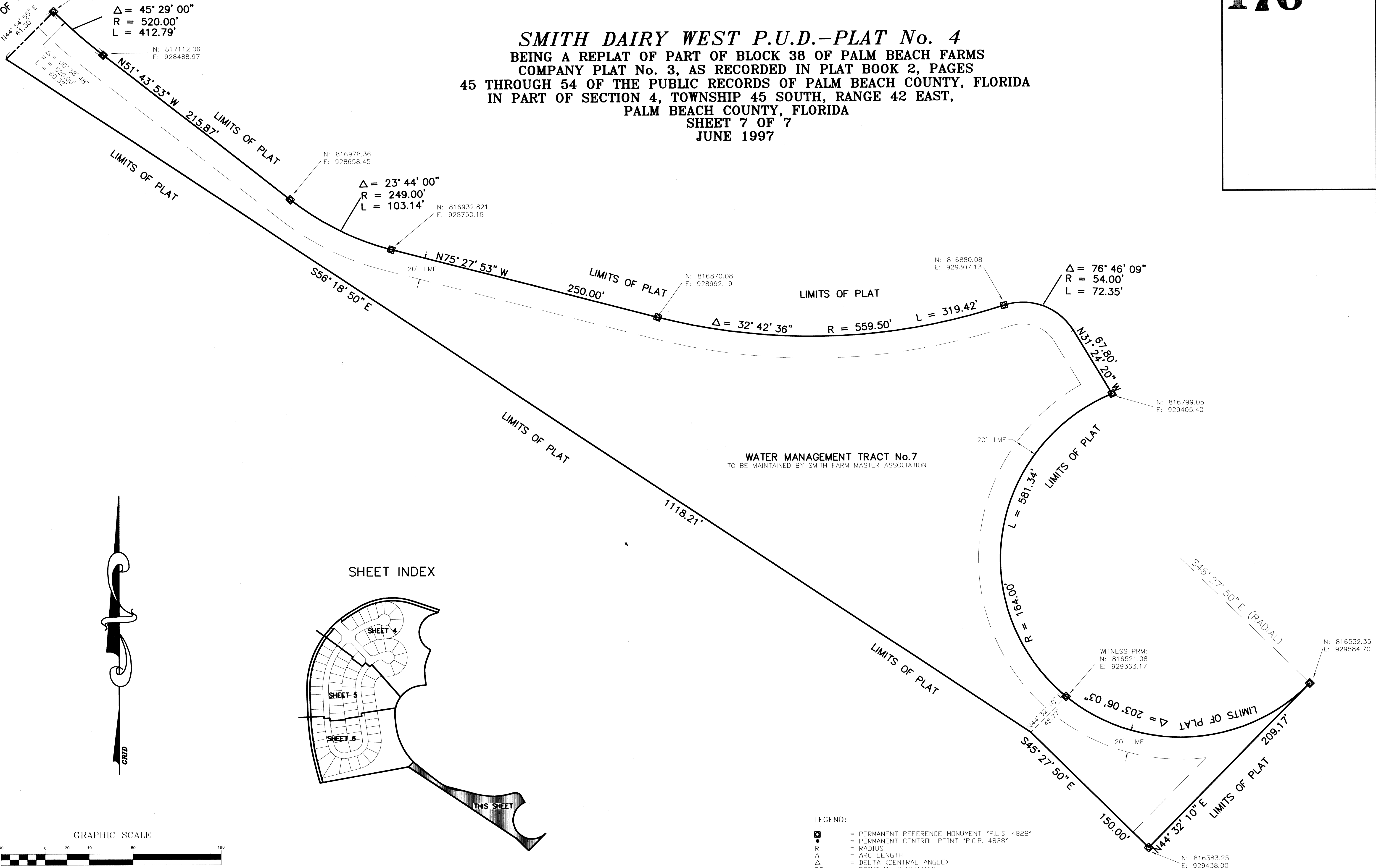


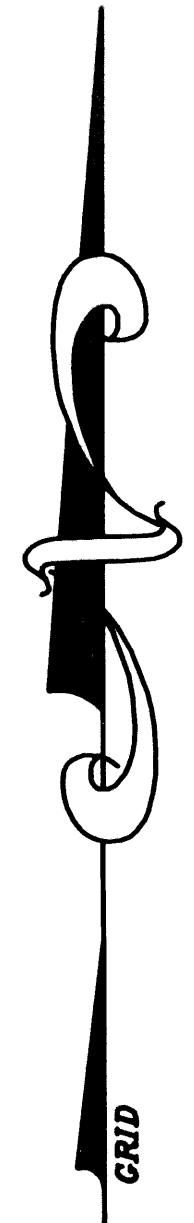
SMITH DAIRY WEST P.U.D.—PLAT No. 4
 BEING A REPLAT OF PART OF BLOCK 38 OF PALM BEACH FARMS
 COMPANY PLAT No. 3, AS RECORDED IN PLAT BOOK 2, PAGES
 45 THROUGH 54 OF THE PUBLIC RECORDS OF PALM BEACH COUNTY, FLORIDA
 IN PART OF SECTION 4, TOWNSHIP 45 SOUTH, RANGE 42 EAST,
 PALM BEACH COUNTY, FLORIDA
 SHEET 7 OF 7
 JUNE 1997

MATCHLINE SEE SHEET 6 OF 7

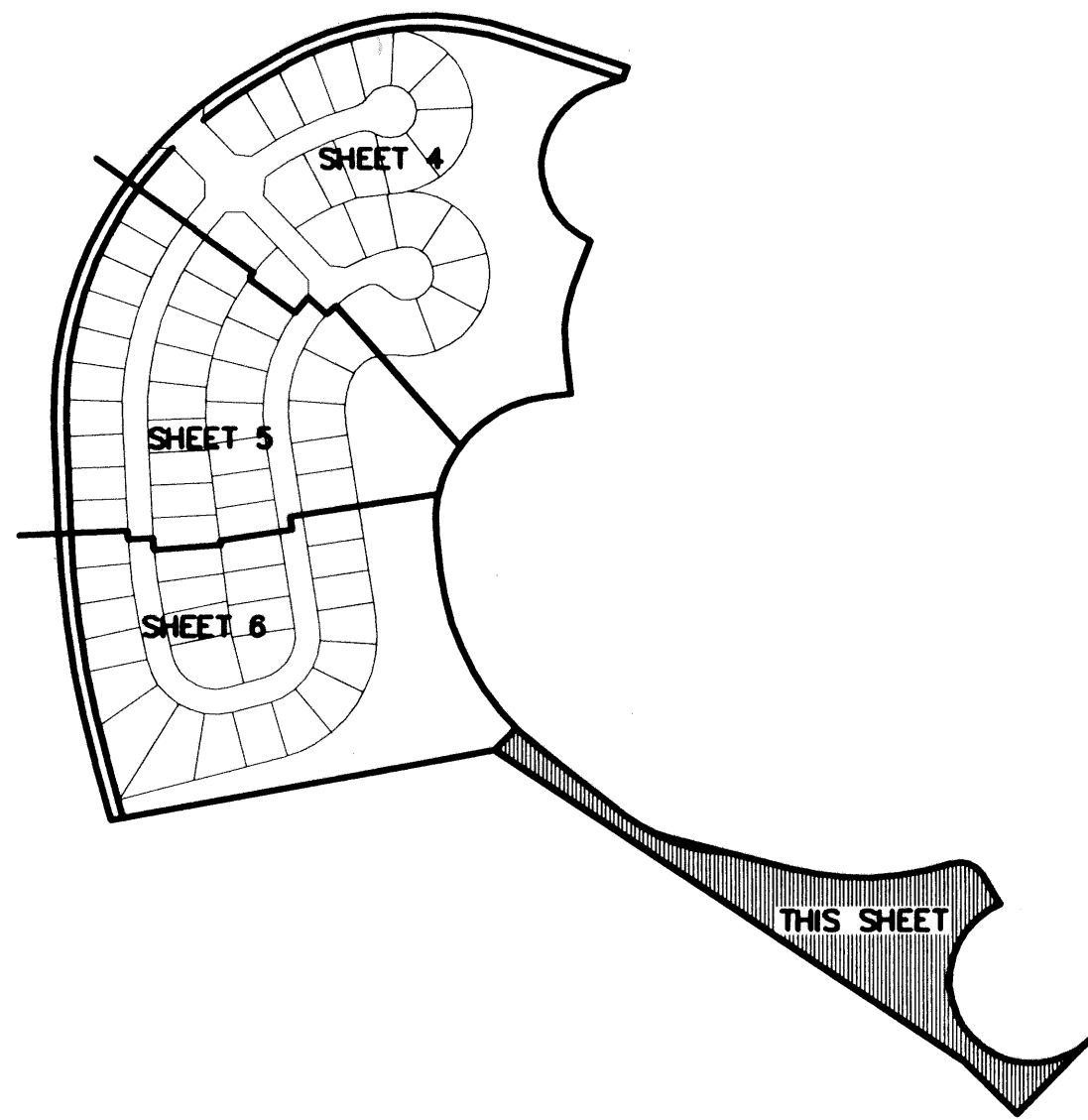
WITNESS PRM:
 N: 817152.09
 E: 928443.87
 $\Delta = 45^{\circ} 29' 00''$
 $R = 520.00'$
 $L = 412.79'$
 N: 817112.06
 E: 928488.97



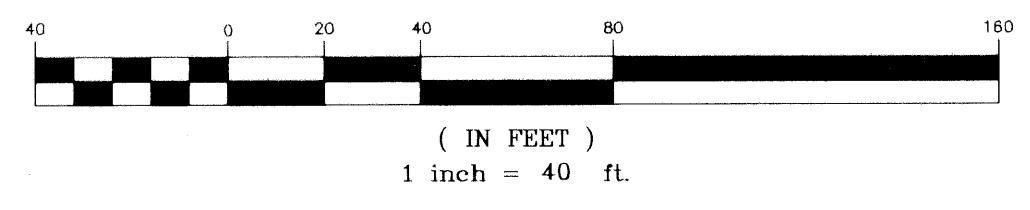
WATER MANAGEMENT TRACT No. 7
 TO BE MAINTAINED BY SMITH FARM MASTER ASSOCIATION




SHEET INDEX



GRAPHIC SCALE



- LEGEND:
- ◻ = PERMANENT REFERENCE MONUMENT 'P.L.S. 4828'
 - = PERMANENT CONTROL POINT 'P.C.P. 4828'
 - R = RADIUS
 - A = ARC LENGTH
 - Δ = DELTA (CENTRAL ANGLE)
 - PC = POINT OF CURVATURE
 - PT = POINT OF TANGENCY
 - PSM = PROFESSIONAL SURVEYOR & MAPPER
 - PLS = PROFESSIONAL LAND SURVEYOR
 - UE = UTILITY EASEMENT
 - DE = DRAINAGE EASEMENT
 - LME = LAKE MAINTENANCE EASEMENT
 - N = NORTHING (GRID)
 - E = EASTING (GRID)
 - (c) = CALCULATED
 - (R) = RADIAL

SCALE: 1"=40'	 NICK MILLER, INC. Surveying & Mapping Consultants
DATE: JUNE 1997	
SMITH DAIRY WEST P.U.D. - PLAT No. 4	
2560 RCA Blvd., Suite 105 Palm Beach Gardens, Florida 33410 (561) 627-5200 D.B.P.R. Business License No. 4318	DRAWING NUMBER 94014BF