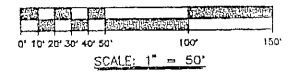


PLAT OF SOUTHWIND

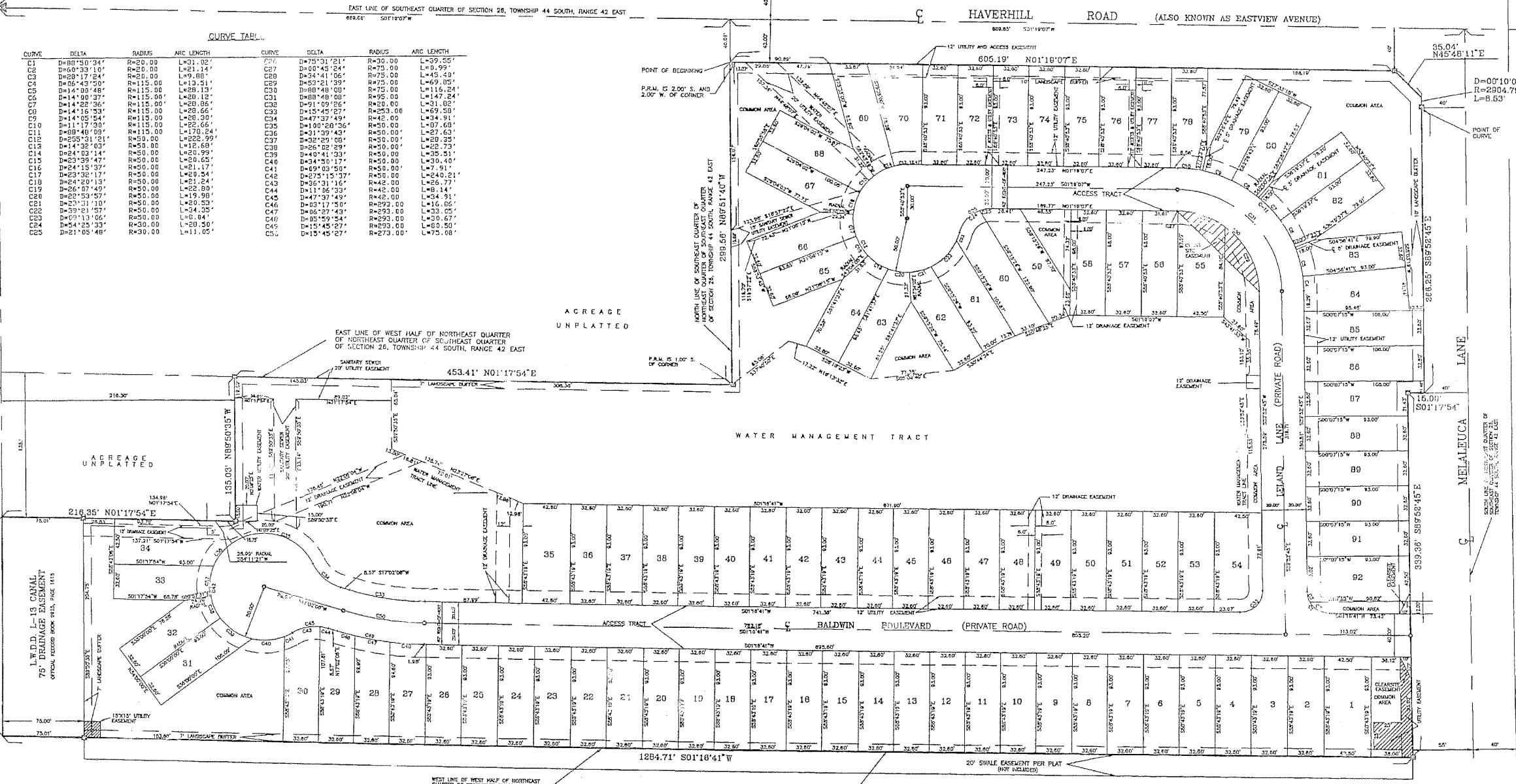
LYING IN SECTION 26, TOWNSHIP 44 SOUTH, RANGE 42 EAST,
PALM BEACH COUNTY, FLORIDA

CITY OF GREENACRES

SHEET 2 OF 2



POINT OF COMMENCEMENT AND THE NEAREST CORNER OF THE SOUTHEAST QUARTER OF SECTION 26, TOWNSHIP 44 SOUTH, RANGE 42 EAST.



CURVE	DELTA	RADIUS	ARC LENGTH	CURVE	DELTA	RADIUS	ARC LENGTH
C01	D=88°50'24"	R=20.00	L=31.02'	C75	D=75°31'21"	R=30.00	L=39.55'
C02	D=88°50'10"	R=20.00	L=31.14'	C76	D=60°43'24"	R=75.00	L=8.99'
C03	D=28°17'24"	R=20.00	L=9.88'	C77	D=34°41'06"	R=75.00	L=45.49'
C04	D=88°43'00"	R=115.00	L=13.51'	C78	D=53°21'39"	R=75.00	L=69.05'
C05	D=14°00'48"	R=115.00	L=28.13'	C79	D=88°48'00"	R=75.00	L=116.24'
C06	D=14°00'37"	R=115.00	L=28.12'	C80	D=88°48'00"	R=95.00	L=147.24'
C07	D=14°22'36"	R=115.00	L=28.06'	C81	D=91°09'26"	R=20.00	L=31.00'
C08	D=14°16'33"	R=115.00	L=28.66'	C82	D=15°45'27"	R=253.00	L=69.58'
C09	D=14°05'54"	R=115.00	L=28.39'	C83	D=47°37'49"	R=42.00	L=34.91'
C10	D=11°17'00"	R=115.00	L=25.66'	C84	D=100°20'06"	R=50.00	L=81.68'
C11	D=88°48'08"	R=115.00	L=170.24'	C85	D=31°39'43"	R=50.00	L=27.63'
C12	D=25°31'21"	R=50.00	L=22.99'	C86	D=26°02'28"	R=50.00	L=22.35'
C13	D=41°28'03"	R=50.00	L=12.68'	C87	D=32°29'08"	R=50.00	L=22.35'
C14	D=24°03'14"	R=50.00	L=20.63'	C88	D=26°02'28"	R=50.00	L=22.35'
C15	D=24°03'14"	R=50.00	L=20.63'	C89	D=40°41'33"	R=50.00	L=35.51'
C16	D=24°15'37"	R=50.00	L=21.17'	C90	D=34°30'17"	R=50.00	L=30.40'
C17	D=23°32'17"	R=50.00	L=20.34'	C91	D=49°03'50"	R=50.00	L=47.91'
C18	D=24°20'13"	R=50.00	L=21.24'	C92	D=75°15'37"	R=50.00	L=240.21'
C19	D=26°07'49"	R=50.00	L=22.80'	C93	D=36°31'16"	R=42.00	L=26.77'
C20	D=20°53'57"	R=50.00	L=19.90'	C94	D=47°37'49"	R=42.00	L=34.91'
C21	D=23°11'10"	R=50.00	L=20.53'	C95	D=43°17'50"	R=293.00	L=116.06'
C22	D=39°21'57"	R=50.00	L=34.35'	C96	D=06°27'43"	R=293.00	L=33.05'
C23	D=57°13'06"	R=30.00	L=8.84'	C97	D=05°59'24"	R=293.00	L=30.67'
C24	D=54°23'33"	R=30.00	L=20.58'	C98	D=15°45'27"	R=253.00	L=69.58'
C25	D=21°05'48"	R=30.00	L=11.05'	C99	D=15°45'27"	R=273.00	L=75.08'

LEGEND

- C = CENTERLINE
- = PERMANENT REFERENCE MONUMENT NO. #3010
- = SET PERMANENT CONTROL POINT NO. #3010
- R = RADIUS
- D = CENTRAL ANGLE
- L = LENGTH OF ARC

THIS INSTRUMENT WAS PREPARED BY:
JUPITER SURVEYING, INC.
 609 N. Hepburn Ave, Suite 205
 Jupiter, Florida 33458
 561-744-4594
 OCTOBER 28, 1997