

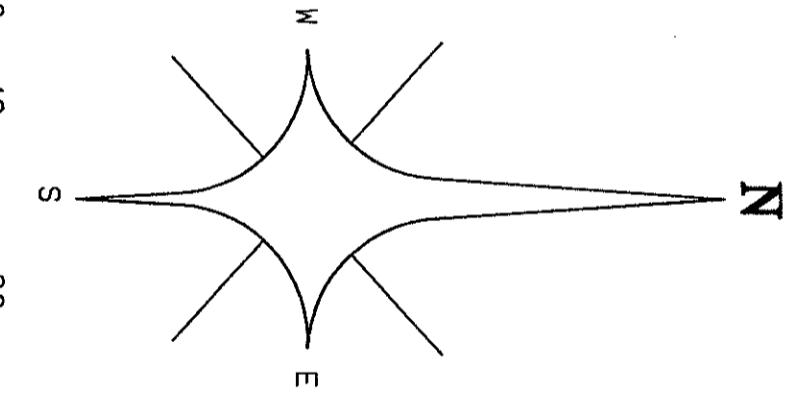
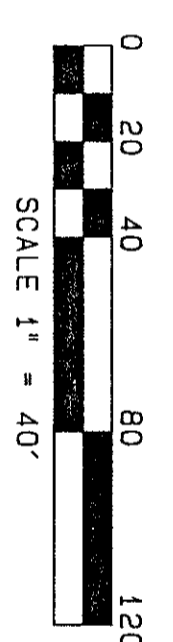
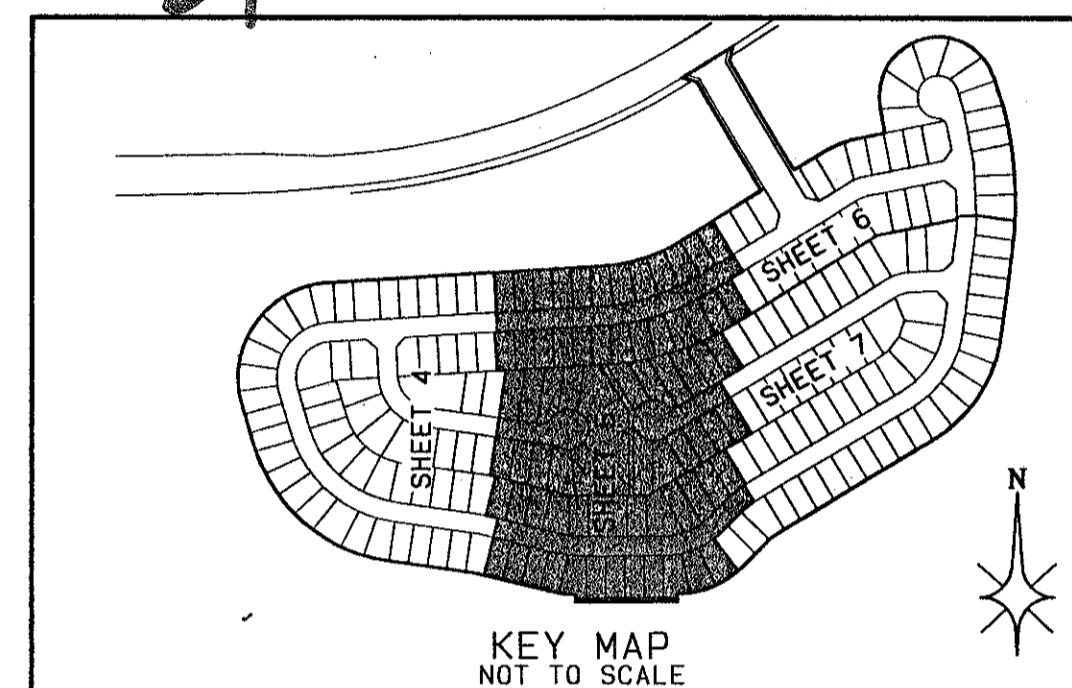
# JONES - PARCEL "B"

BEING A REPLAT OF PARCEL "B", JONES P.U.D. AS RECORDED IN PLAT BOOK 78, PAGES 71 THROUGH 78 OF THE PUBLIC RECORDS OF PALM BEACH COUNTY, FLORIDA SITUATE IN SECTION 33, TOWNSHIP 45 SOUTH, RANGE 42 EAST AND SECTION 4, TOWNSHIP 46 SOUTH, RANGE 42 EAST, PALM BEACH COUNTY, FLORIDA

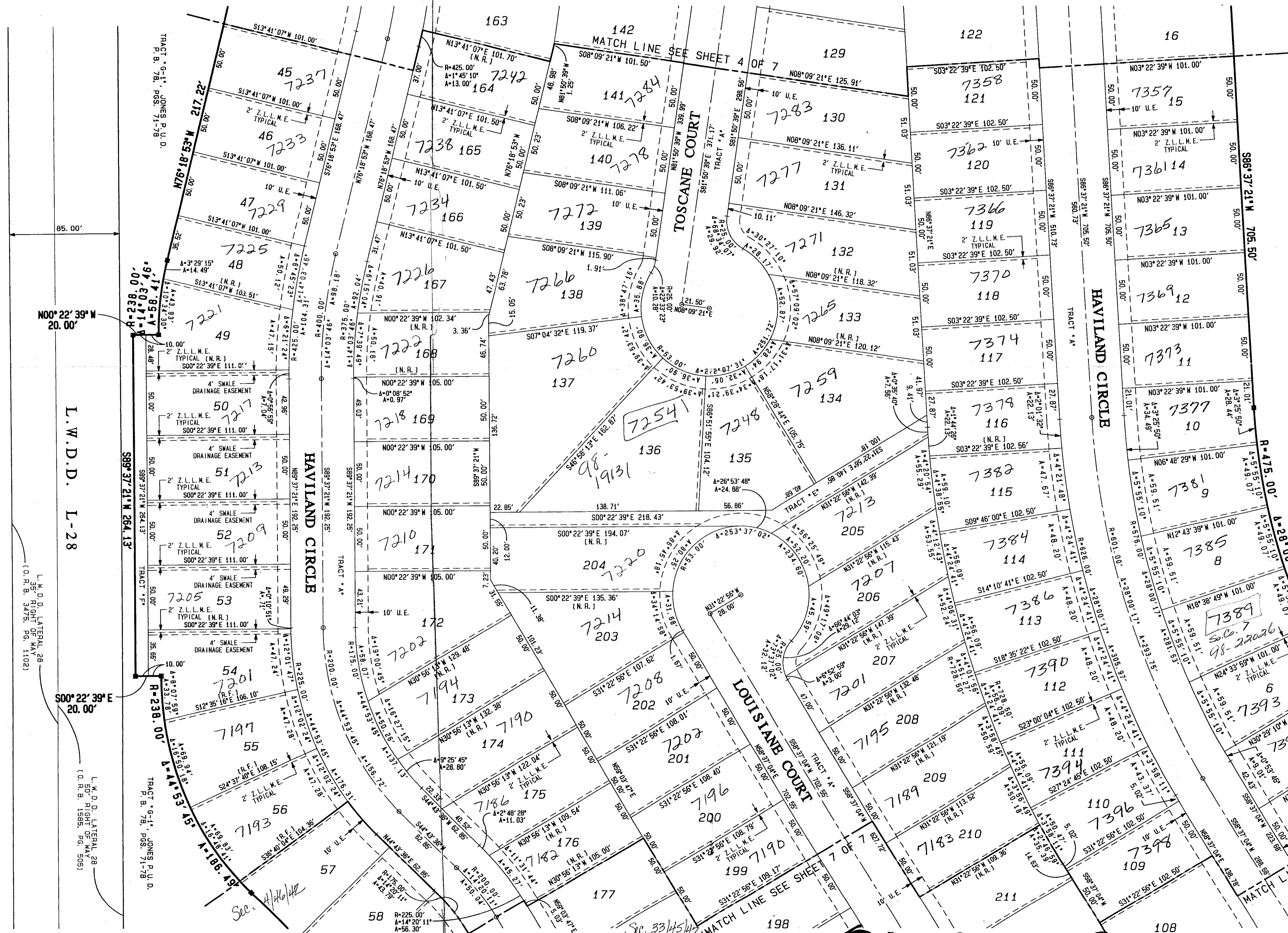
SHEET 5 OF 7 SEPTEMBER, 1997

STATE OF FLORIDA } SS  
 COUNTY OF PALM BEACH }  
 THIS PLAT WAS FILED FOR  
 RECORD AT \_\_\_\_\_ DAY OF  
 THIS \_\_\_\_\_ AD 1998 AND  
 DULY RECORDED IN PLAT BOOK  
 \_\_\_\_\_ ON PAGES \_\_\_\_\_ AND  
 \_\_\_\_\_  
 DOROTHY H. WILKEN, CLERK  
 CIRCUIT COURT  
 BY: \_\_\_\_\_ DC

*PET. 95-19*  
*ALUOC. #0001*  
*5/3/3/K*



- LEGEND:
- A = CENTRAL ANGLE/Delta
  - CL = CENTERLINE
  - D.B. = DEED BOOK
  - D.E. = DRAINAGE EASEMENT
  - F.P.L. = FLORIDA POWER AND LIGHT COMPANY
  - L = ARC LENGTH
  - L.A.E. = LIMITED ACCESS EASEMENT
  - L.M.A.E. = LAKE MAINTENANCE ACCESS EASEMENT
  - L.M.E. = LAKE MAINTENANCE EASEMENT
  - L.W.D.D. = LAKE WORTH DRAINAGE DISTRICT
  - N.R. = NON-RADIAL
  - N.T.S. = NOT TO SCALE
  - O.R.B. = OFFICIAL RECORDS BOOK
  - P.B. = PLAT BOOK
  - Pg. = PAGE
  - P.O.B. = POINT OF BEGINNING
  - P.O.C. = POINT OF COMMENCEMENT
  - R = RADIUS (RADI)
  - R.F. = RADIAL TO FRONT LOT LINE
  - R.R. = RADIAL TO REAR LOT LINE
  - R/W = RIGHT OF WAY
  - U.E. = UTILITY EASEMENT
  - Z.L.L.M.E. = ZERO LOT LINE MAINTENANCE EASEMENT
  - PCP = PERMANENT CONTROL POINT (PCP)
  - PCP #5219
  - PRM = PERMANENT REFERENCE MONUMENT (PRM)
  - SET PRM #5219



SUBMISSION # 3  
 BOOK 51  
 PAGE 14  
 FLOOD ZONE B  
 ZONING PD  
 PUB NAME Mine  
 PUB DATE 5/3/97

*0683-007*

*81/194*