

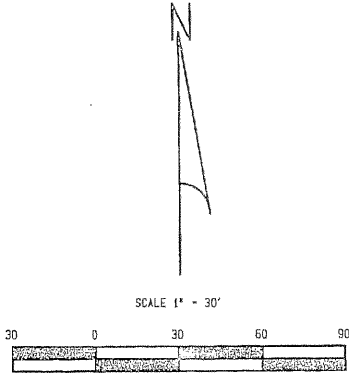
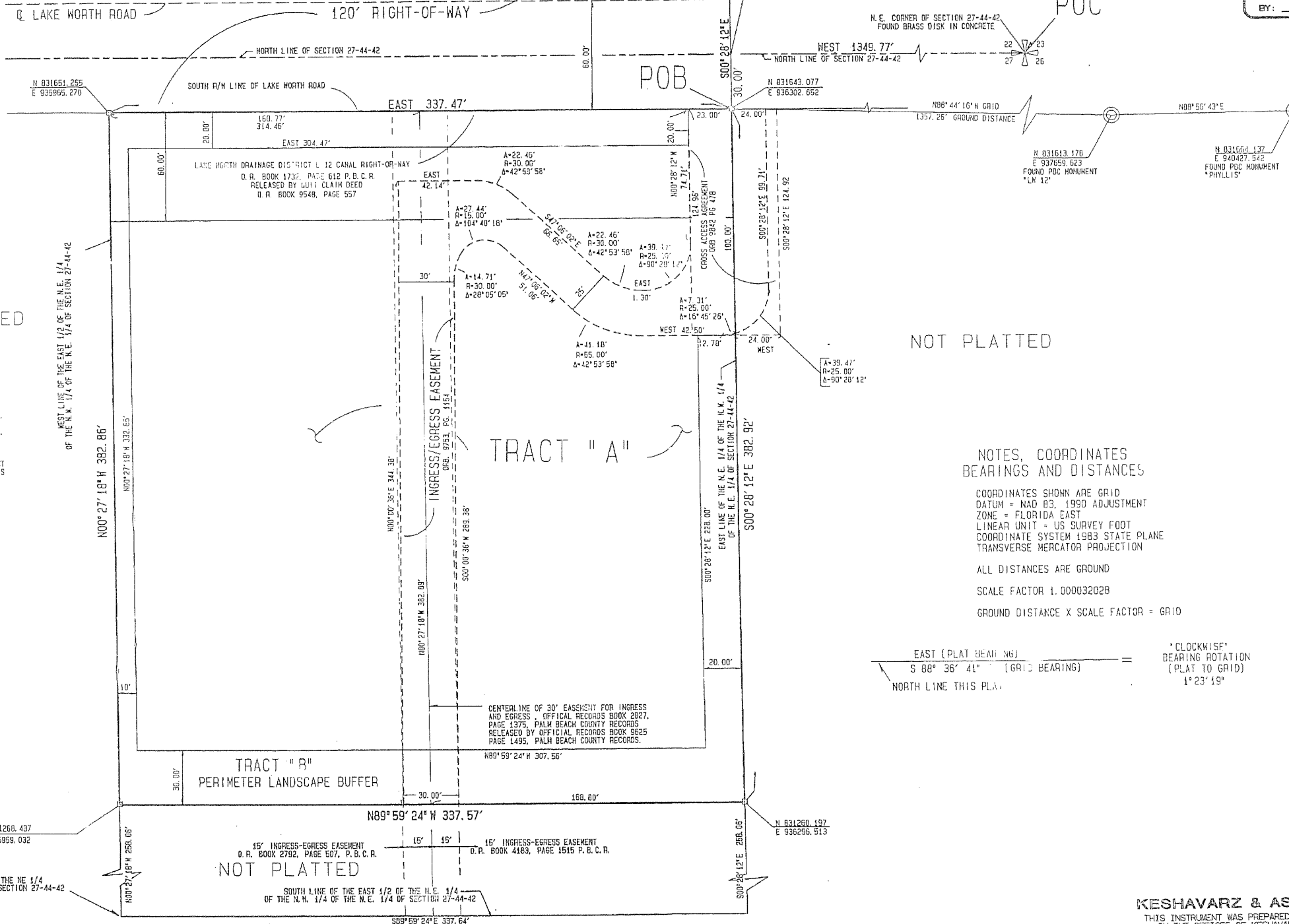
LA-Z-BOY PLAT NO. 1

BEING A PORTION OF SECTION 27, TOWNSHIP 44 SOUTH, RANGE 42 EAST, PALM BEACH COUNTY, FLORIDA
SHEET 2 OF 2
CITY OF GREENACRES, PALM BEACH COUNTY, FLORIDA
NOT PLATTED
JUNE 1997

ROAD PLAT BOOK 5, PAGE 129
FLORIDA DEPARTMENT OF TRANSPORTATION
SECTION NUMBER 93610-2602
SHEET 5 OF 14

LAKE WORTH ROAD

STATE ROAD 802



STATE OF FLORIDA }
COUNTY OF PALM BEACH } SS
THIS PLAT WAS FILED FOR
RECORD AT _____ DAY OF
THIS _____ A.D. 1997 AND
DULY RECORDED IN PLAT BOOK
_____ ON PAGES _____ AND

DOROTHY WILKEN, CLERK
CIRCUIT COURT.
BY: _____ DC

- SURVEYOR'S NOTES**
1. ALL BEARINGS SHOWN HEREON ARE RELATIVE TO THE NORTH LINE OF SECTION 27, TOWNSHIP 44 SOUTH, RANGE 42 EAST, BEING WEST.
 2. THERE MAY BE ADDITIONAL RESTRICTIONS THAT ARE NOT RECORDED ON THIS PLAT THAT MAY BE FOUND IN THE PUBLIC RECORDS OF THIS COUNTY.
 3. BUILDING SETBACK LINES SHALL BE AS APPROVED BY PALM BEACH COUNTY, FLORIDA.
 4. NO BUILDINGS OR ANY KIND OF CONSTRUCTION OR TREES OR SHRUBS SHALL BE PLACED ON ANY EASEMENT WITHOUT THE PRIOR WRITTEN CONSENT OF ALL EASEMENT BENEFICIARIES AND ALL APPLICABLE COUNTY APPROVALS OR PERMITS AS REQUIRED FOR SUCH ENCROACHMENT.

- LEGEND**
- O.R. = OFFICIAL RECORDS
 - P.B.C.R. = PALM BEACH COUNTY RECORDS
 - N.E. = STATE PLANE COORDINATE NORTHING
 - E. = STATE PLANE COORDINATE EASTING
 - R/W = RIGHT-OF-WAY
 - C.L. = CENTERLINE
 - O.R.B. = OFFICIAL RECORDS BOOK
 - P.G. = PAGE
 - P.M. = PERMANENT REFERENCE MONUMENT
 - D. = PERMANENT REFERENCE MONUMENT SET PLS 4392

NOTES, COORDINATES BEARINGS AND DISTANCES

COORDINATES SHOWN ARE GRID
DATUM = NAD 83, 1990 ADJUSTMENT
ZONE = FLORIDA EAST
LINEAR UNIT = US SURVEY FOOT
COORDINATE SYSTEM 1983 STATE PLANE
TRANSVERSE MERCATOR PROJECTION

ALL DISTANCES ARE GROUND
SCALE FACTOR 1.000032028
GROUND DISTANCE X SCALE FACTOR = GRID

$$\frac{\text{EAST (PLAT BEARING)}}{S\ 88^{\circ}\ 36'\ 41''\ \text{[GRID BEARING]}} = \frac{\text{NORTH LINE THIS PLAT}}{\text{CLOCKWISE BEARING ROTATION [PLAT TO GRID] 1^{\circ}\ 23'\ 19''}}$$

KESHAVARZ & ASSOCIATES, INC.
THIS INSTRUMENT WAS PREPARED BY CHARLES H. ANDERSON
IN THE OFFICES OF KESHAVARZ & ASSOCIATES, INC.
1280 N. CONGRESS AVENUE, SUITE 206
WEST PALM BEACH, FLORIDA 33409
(561) 689-8600 / FAX 689-7475