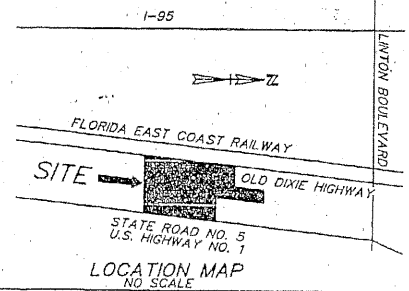


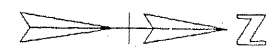
PLAT OF DELRAY LINCOLN MERCURY PLAT No. 2

BEING A REPLAT OF TRACT A AND TRACT B, DELRAY LINCOLN MERCURY, PLAT BOOK 69 PAGES 107 AND 108, AND A PORTION OF TRACTS No.3A AND No.4A OF REVISED PLAT OF PORTIONS OF SECTION 28 AND 29, TOWNSHIP 46 SOUTH, RANGE 43 EAST, PLAT BOOK 18 PAGE 53, AND A REPLAT OF PART OF LOT 3, SUBDIVISION OF SECTION 29, TOWNSHIP 46 SOUTH, RANGE 43 EAST, PLAT BOOK 1, PAGE 4

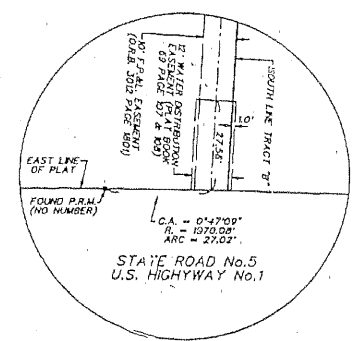
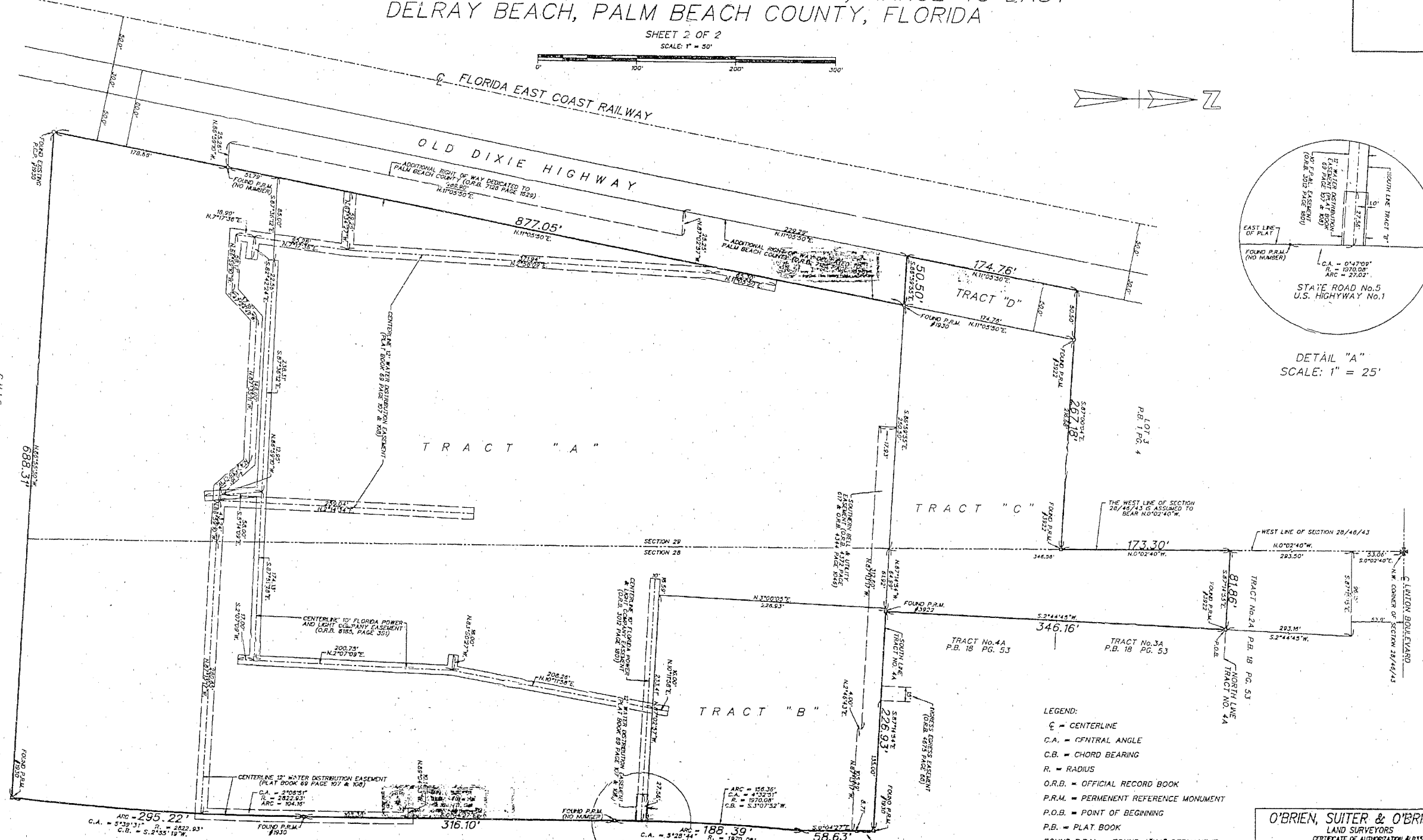
SECTIONS 28 AND 29, TOWNSHIP 46 SOUTH, RANGE 43 EAST DELRAY BEACH, PALM BEACH COUNTY, FLORIDA



SHEET 2 OF 2
SCALE: 1" = 50'



688.31' 68.5 ACRES P.B.29 P.G.12



DETAIL "A"
SCALE: 1" = 25'

- LEGEND:
- C = CENTERLINE
 - C.A. = CENTRAL ANGLE
 - C.B. = CHORD BEARING
 - R. = RADIUS
 - O.R.B. = OFFICIAL RECORD BOOK
 - P.R.M. = PERMANENT REFERENCE MONUMENT
 - P.O.B. = POINT OF BEGINNING
 - P.B. = PLAT BOOK
 - FOUND P.R.M. = FOUND 4"X4" PERMANENT REFERENCE MONUMENT
- SECTION 28/46/43 = SECTION 28, TOWNSHIP 46 SOUTH, RANGE 43 EAST

O'BRIEN, SUITER & O'BRIEN, INC.
 LAND SURVEYORS
 CERTIFICATE OF AUTHORIZATION #13353
 SURVEYOR AND MAPPER IN RESPONSIBLE CHARGE: JOHN N. SUITER
 2601 NORTH FEDERAL HIGHWAY, DELRAY BEACH, FLORIDA 33483
 (561) 276-4501 732-3279 FAX 276-2390

DATE: OCT., 1996
 FIELD BOOK PAGE NO.
 SCALE: 1" = 50'
 SHEET NO.: 15