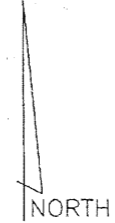


PLAT OF Sawfish Bay Colony

LYING IN SECTION 6, TOWNSHIP 41 SOUTH,
RANGE 43 EAST, TOWN OF JUPITER,
PALM BEACH COUNTY, FLORIDA

MARCH 1998

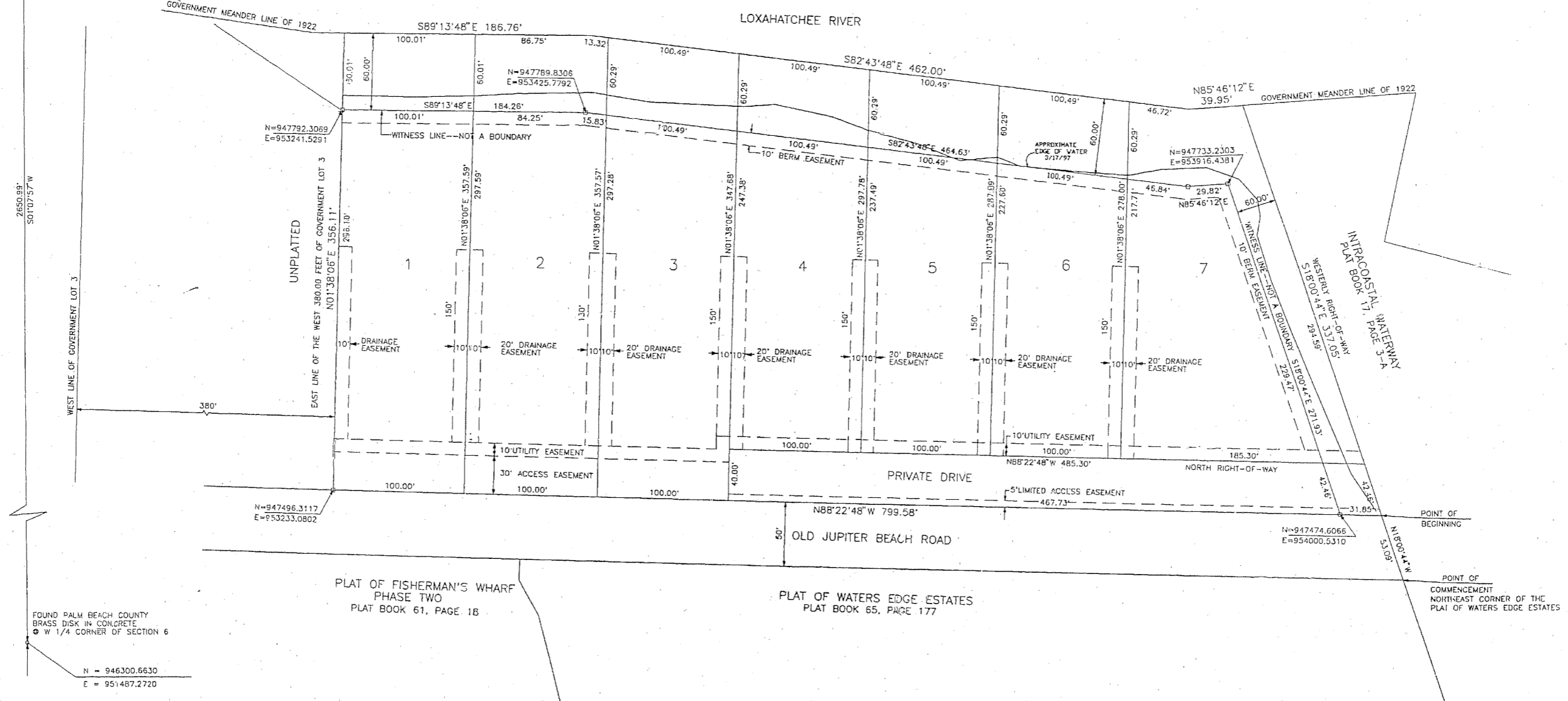
SHEET 2 OF 2



0 20 40 100
SCALE: 1" = 40'

FOUND PALM BEACH COUNTY
BRASS DISK IN CONCRETE
N.W. CORNER OF SECTION 6
N = 948951.2310
E = 951539.6700

N55°44'40"W 2058.90'
(CALCULATED FROM FIELD TRAVERSE)



FOUND PALM BEACH COUNTY
BRASS DISK IN CONCRETE
W 1/4 CORNER OF SECTION 6
N = 946300.6630
E = 951487.2720

PLAT OF FISHERMAN'S WHARF
PHASE TWO
PLAT BOOK 61, PAGE 18

PLAT OF WATERS EDGE ESTATES
PLAT BOOK 65, PAGE 177

THIS INSTRUMENT WAS PREPARED BY ROBERT P. BLASZYK, PSM, IN THE OFFICES OF
Messler & Associates
CONSULTING ENGINEERS
11211 Prosperity Farms Rd., Suite C-301, Palm Beach Gardens, Florida 33410
Phone (561) 627-2226 Fax (561) 624-1569