

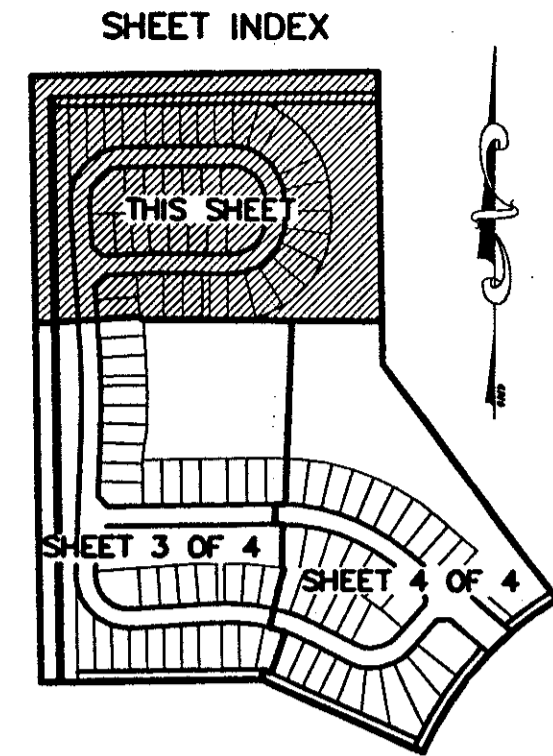
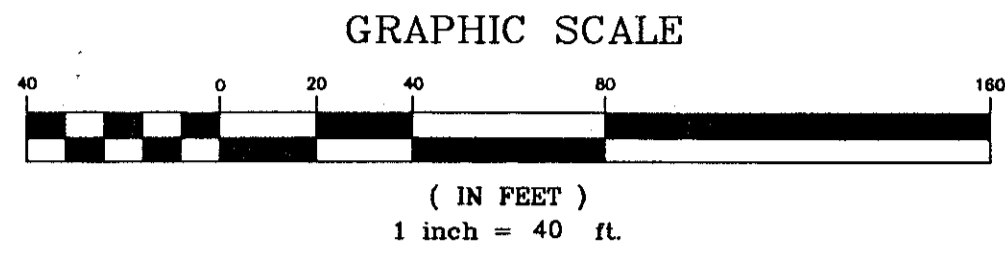
**SMITH DAIRY WEST P.U.D.-PLAT No. 6**  
**BEING A REPLAT OF PART OF BLOCK 38 OF PALM BEACH FARMS**  
**COMPANY PLAT No. 3, AS RECORDED IN PLAT BOOK 2, PAGES**  
**45 THROUGH 54 OF THE PUBLIC RECORDS OF PALM BEACH COUNTY, FLORIDA**  
**IN PART OF SECTION 4 AND 5, TOWNSHIP 45 SOUTH, RANGE 42 EAST,**  
**PALM BEACH COUNTY, FLORIDA**  
**SHEET 2 OF 4**  
**AUGUST 1997**

- LEGEND:**
- ☉ = PERMANENT REFERENCE MONUMENT "P.L.S. 4828"
  - ☐ = PERMANENT CONTROL POINT "P.C.P. 4828"
  - R = RADIUS
  - A = ARC LENGTH
  - Δ = DELTA (CENTRAL ANGLE)
  - PC = POINT OF CURVATURE
  - PT = POINT OF TANGENCY
  - PSM = PROFESSIONAL SURVEYOR & MAPPER
  - PLS = PROFESSIONAL LAND SURVEYOR
  - UE = UTILITY EASEMENT
  - DE = DRAINAGE EASEMENT
  - LME = LAKE MAINTENANCE EASEMENT
  - NZ = NORTHING (GRID)
  - (C) = CALCULATED
  - (R) = RADIAL
  - MREE = MAINTENANCE AND ROOF EAVE EASEMENT

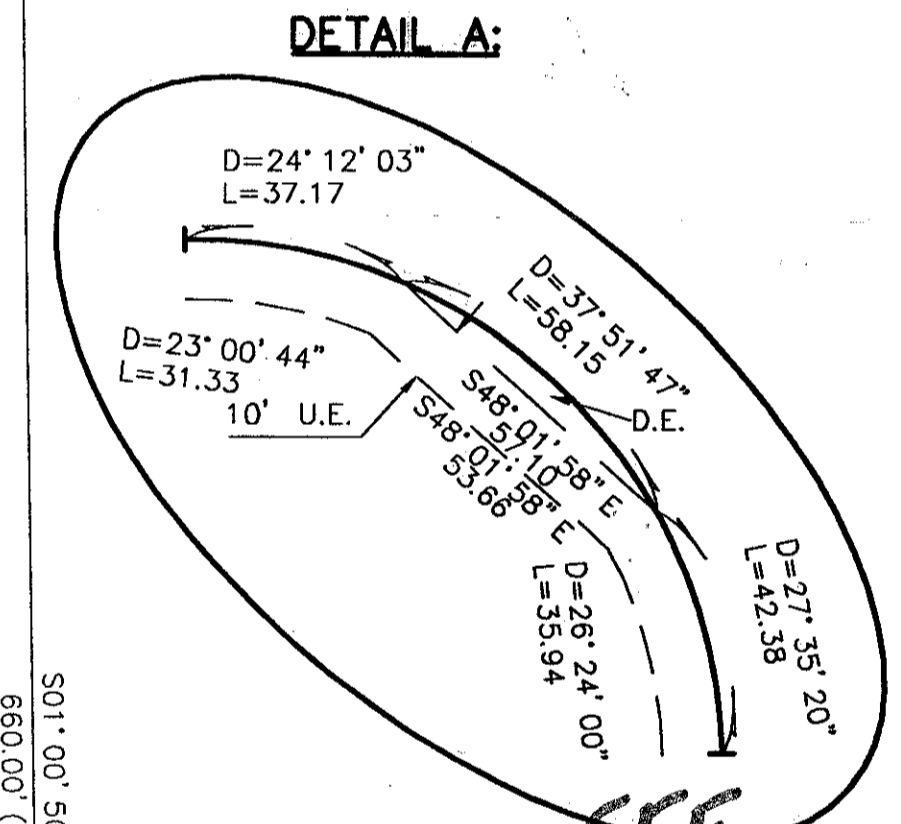
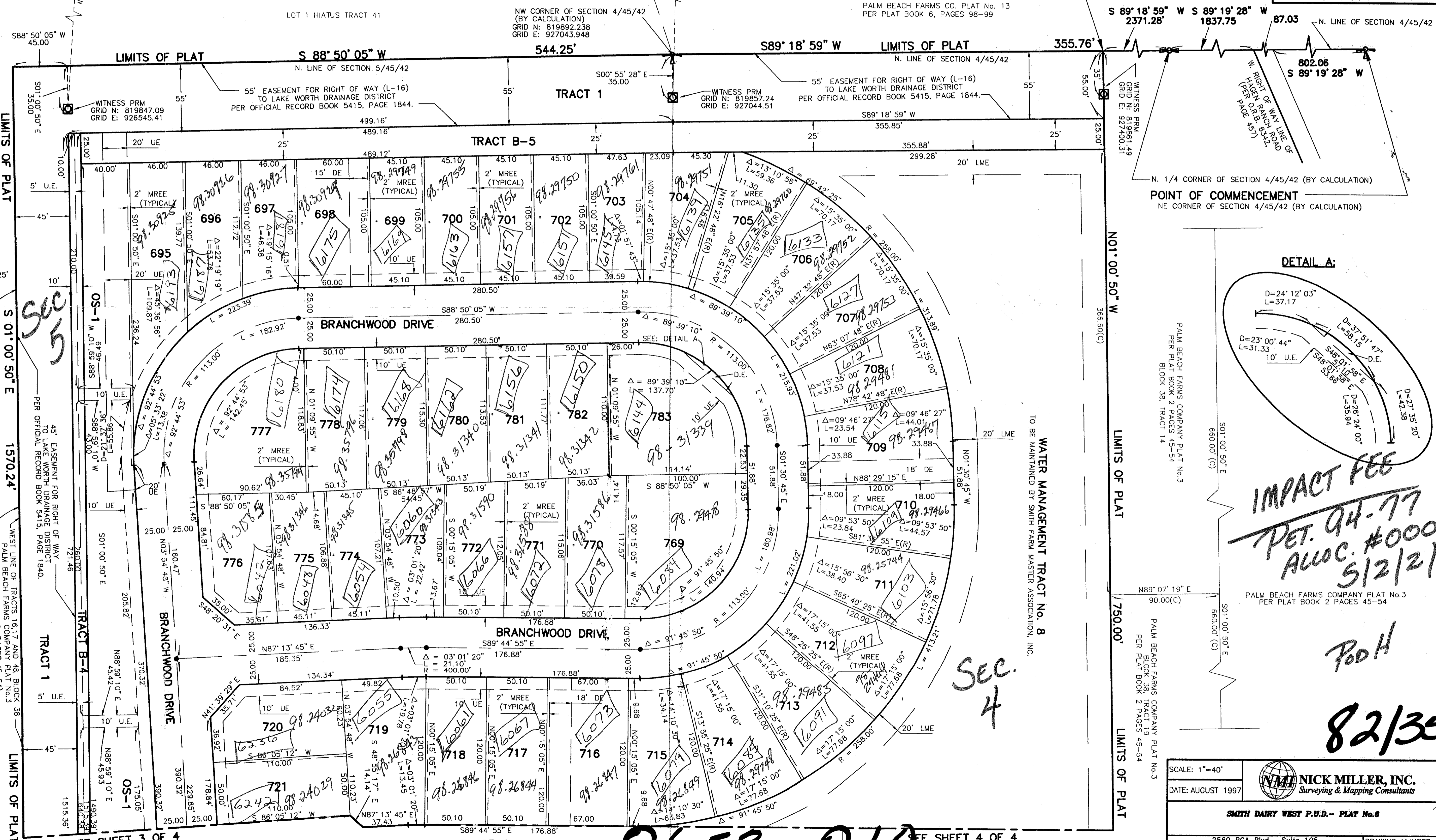
**35**

NOTE: POSITION OF SECTION CORNERS CALCULATED BASED ON PALM BEACH COUNTY SURVEY DEPARTMENT VALUES.

SOUTHWEST SECTION CORNER SECTION 33, TOWNSHIP 44 SOUTH, RANGE 42 EAST GRID N: 821147.12 GRID E: 926621.10



SOUTH QUARTER CORNER SECTION 33, TOWNSHIP 44 SOUTH, RANGE 42 EAST GRID N: 821077.81 GRID E: 929323.45



**IMPACT FEE**  
**PET. 94-77**  
**ALLOC. #0001**  
**5/2/21**

**Pool**  
**82/35**

WATER MANAGEMENT TRACT No. 8 TO BE MAINTAINED BY SMITH FARM MASTER ASSOCIATION, INC.

SCALE: 1"=40'  
 DATE: AUGUST 1997  
**NICK MILLER, INC.**  
 Surveying & Mapping Consultants  
**SMITH DAIRY WEST P.U.D.- PLAT No.6**  
 2560 RCA Blvd., Suite 105  
 Palm Beach Gardens, Florida 33410  
 (561) 627-5200  
 D.B.P.R. Business License No. 4318  
 DRAWING NUMBER  
 94014BT

**0653-010**

Pkt #6  
 Page 35  
 Smith Dairy West  
 94-77  
 82/35

SEE SHEET 3 OF 4

SEE SHEET 3 OF 4

SEE SHEET 4 OF 4