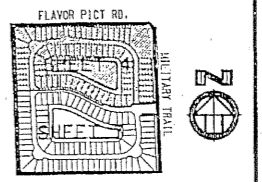
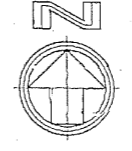
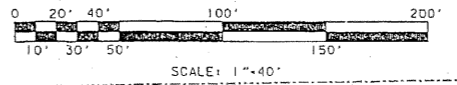


THIS INSTRUMENT WAS PREPARED BY:  
**JEFF S. HODAPP OF**  
**CARNAHAN-PROCTOR AND ASSOCIATES, INC.**  
**CONSULTING ENGINEERS**  
 SURVEYORS ENGINEERS PLANNERS  
 6191 WEST ATLANTIC BLVD., MARGATE, FLORIDA 33063  
 MARCH 1996 961219 JSB

FLAVOR PICT P.U.D.  
**HAMPTON LAKES**  
 A PORTION OF THE SOUTHEAST ONE-QUARTER OF THE SOUTHEAST  
 ONE-QUARTER OF SECTION 2, TOWNSHIP 46 SOUTH, RANGE 42 EAST,  
 PALM BEACH COUNTY, FLORIDA

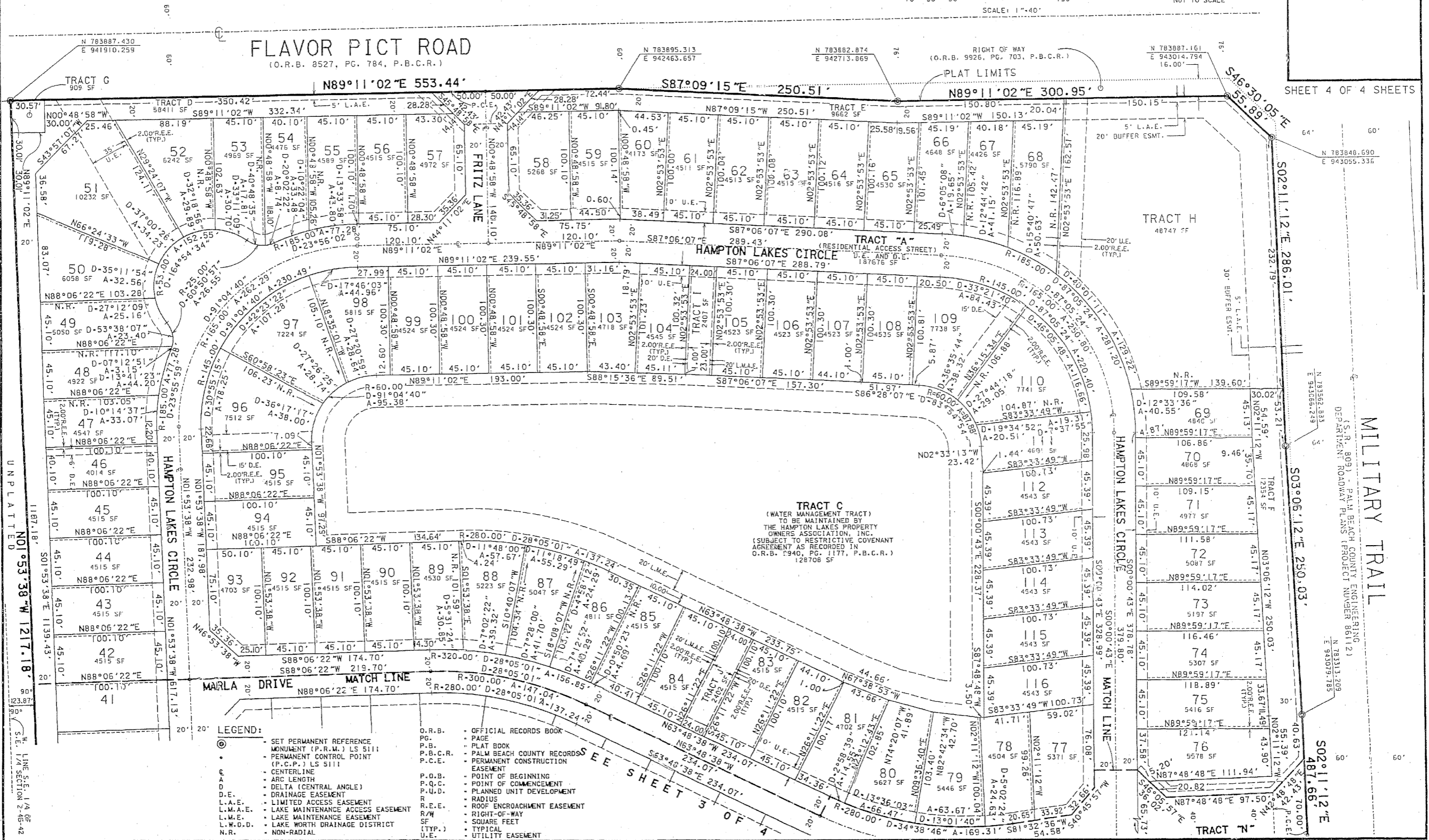


**41**



KEY MAP  
 NOT TO SCALE

SHEET 4 OF 4 SHEETS



- LEGEND:**
- SET PERMANENT REFERENCE MONUMENT (P.R.M.) LS 5111
  - PERMANENT CONTROL POINT (P.C.P.) LS 5111
  - CENTERLINE
  - ARC LENGTH
  - DELTA (CENTRAL ANGLE)
  - DRAINAGE EASEMENT
  - LIMITED ACCESS EASEMENT
  - LAKE MAINTENANCE EASEMENT
  - LAKE MAINTENANCE EASEMENT
  - LAKE WORTH DRAINAGE DISTRICT
  - NON-RADIAL
  - O.R.B. OFFICIAL RECORDS BOOK
  - PG. PAGE
  - P.B. PLAT BOOK
  - P.B.C.R. PALM BEACH COUNTY RECORDS
  - P.C.F. PERMANENT CONSTRUCTION EASEMENT
  - P.O.B. POINT OF BEGINNING
  - P.P.C. POINT OF COMMENCEMENT
  - P.U.D. PLANNED UNIT DEVELOPMENT
  - R. RADIUS
  - R.E.E. ROOF ENCROACHMENT EASEMENT
  - R/W. RIGHT-OF-WAY
  - SF. SQUARE FEET
  - (TYP.) TYPICAL
  - U.E. UTILITY EASEMENT

SHEET 3 OF 4