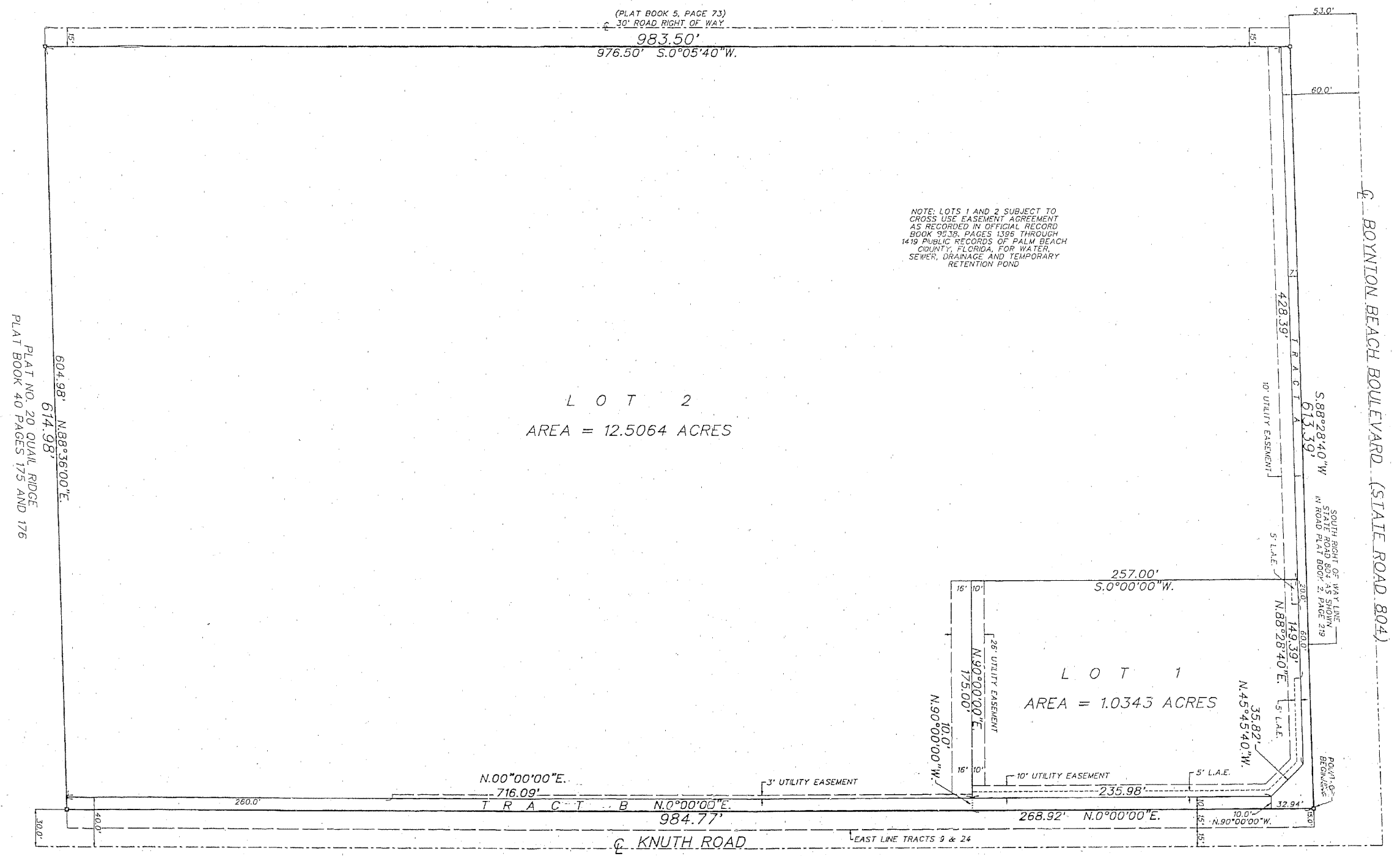
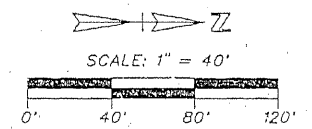


PLAT OF  
**KNUTH ROAD P.C.D. PLAT NO.1**  
BEING A REPLAT OF A PORTION OF TRACTS 9 AND 10 AND ALL OF TRACTS 23 AND 24, PALM BEACH FARMS COMPANY PLAT NO. 8, ACCORDING TO PLAT BOOK 5, PAGE 73, SECTION 30, TOWNSHIP 45 SOUTH, RANGE 43 EAST, CITY OF BOYNTON BEACH, PALM BEACH COUNTY, FLORIDA.

SHEET 2 OF 2



604.98' N.88°36'00"E.  
614.98'  
PLAT NO. 20 QUAIL RIDGE  
PLAT BOOK 40 PAGES 175 AND 176

LEGEND:  
 ☐ = CENTERLINE  
 □ = SET PERMANENT REFERENCE MONUMENT (P.R.M.)  
 THE SOUTH RIGHT OF WAY LINE OF STATE ROAD 804 IS ASSUMED TO BEAR N.88°28'40"E.  
 L.A.E. = LIMITED ACCESS EASEMENT

O'BRIEN, SUITER & O'BRIEN, INC.  
 LAND SURVEYORS  
 CERTIFICATE OF AUTHORIZATION #8333  
 SURVEYOR AND MAPPER IN RESPONSIBLE CHARGE: JOHN H. SUITER  
 2807 NORTH FEDERAL HIGHWAY, DEER BEACH, FLORIDA 33441  
 (561) 278-4501 732-3172 FAX 278-2390

DATE: JAN. 1998  
 SHEET: 874 OF 874  
 SCALE: 1" = 40'  
 DRAWING NO.: 78-309-01