

# ADDISON RESERVE PARCEL SEVENTEEN

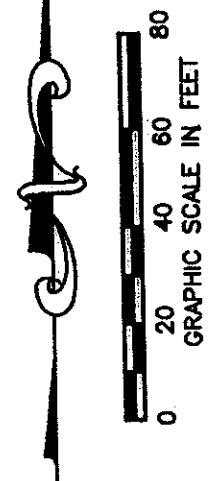
PART OF GLENEAGLES/POLO CLUB WEST P.U.D.  
BEING A REPLAT OF TRACT 17 AND TRACT G  
"ADDISON RESERVE PLAT FOUR"  
(P.B. 79, PGS. 76-81)

SITUATE IN SECTION 28, TOWNSHIP 46 SOUTH, RANGE 42 EAST  
PALM BEACH COUNTY, FLORIDA  
OCTOBER, 1997 SHEET 3 OF 3

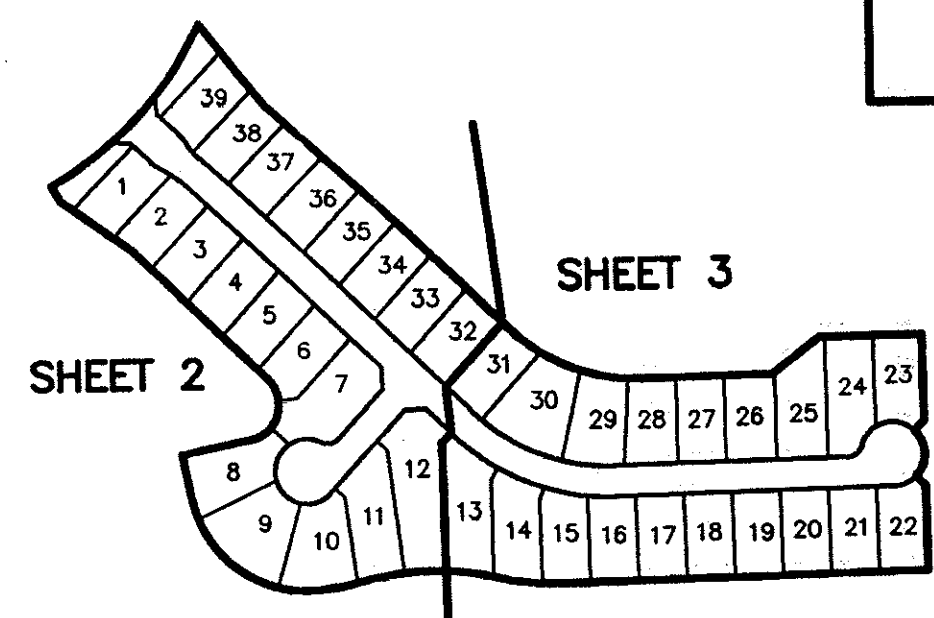
0230-027

51

STATE OF FLORIDA  
COUNTY OF PALM BEACH  
THIS PLAT WAS FILED FOR  
RECORD \_\_\_\_\_ DAY OF \_\_\_\_\_  
A.D. 1997 AND DULY RECORDED  
IN PLAT BOOK \_\_\_\_\_ ON PAGES  
\_\_\_\_\_ AND \_\_\_\_\_  
DOROTHY H. WILKEN, CLERK  
BY: \_\_\_\_\_, D.C.



CIRCUIT COURT SEAL



SHEET LOCATION MAP  
NOT TO SCALE

- LEGEND**
- BE BUFFER EASEMENT
  - Δ CENTRAL (DELTA) ANGLE
  - DE DRAINAGE EASEMENT
  - FPL FLORIDA POWER & LIGHT
  - L ARC LENGTH
  - LAE LIMITED ACCESS EASEMENT
  - LE LANDSCAPE EASEMENT
  - LME LAKE MAINTENANCE EASEMENT
  - LMAE LAKE MAINTENANCE ACCESS EASEMENT
  - LWDD LAKE WORTH DRAINAGE DISTRICT
  - (NR) NON-RADIAL
  - ORFB OFFICIAL RECORD BOOK
  - PB PLAT BOOK
  - PG(S) PAGE(S)
  - PUD PLANNED UNIT DEVELOPMENT
  - R RADIUS
  - UE UTILITY EASEMENT
  - PM PERMANENT REFERENCE MONUMENT
  - FR FOUND PLS# 4763
  - PR PERMANENT REFERENCE MONUMENT
  - SP SET PLS# 4763
  - PC PERMANENT CONTROL POINT
  - SC SET PLS# 4763
  - CL CENTERLINE

Palm Beach County Control Point "GAST" Brass Disc in Concrete  
N 763501.6313  
E 928321.8927

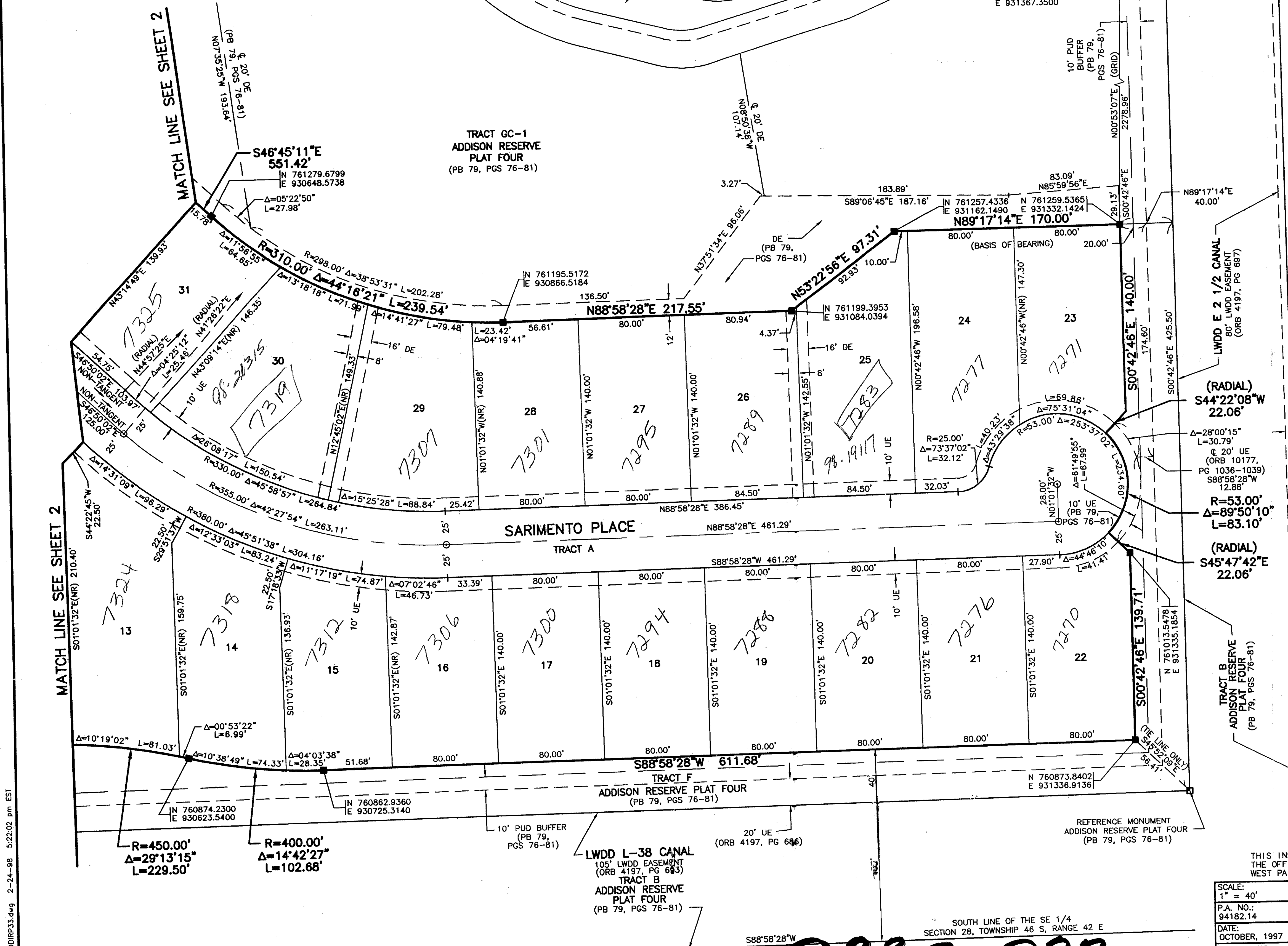
Palm Beach County Control Point "GAST" Brass Disc in Concrete  
N 763538.3000  
E 931367.3500

ALL DISTANCES ARE GROUND  
SCALE FACTOR = 1.0000338

COORDINATES SHOWN ARE GRID  
DATUM = NAD 83 1990 ADJUSTMENT  
ZONE = FLORIDA EAST  
LINEAR UNIT = US SURVEY FEET  
COORDINATE SYSTEM 1983 STATE PLANE  
TRANSVERSE MERCATOR PROJECTION  
GROUND DISTANCE X SCALE FACTOR = GRID

N 89°17'14"E (Plat) 00°00'15" Bearing  
N 89°17'29"E (Grid) (Clockwise Rotation (Plat to Grid))

NORTHEAST LINE  
PARCEL 17,  
ADDISON RESERVE PLAT FOUR  
PB 79, PGS 76-81



ADDRP33.dwg 2-24-98 5:22:02 pm EST

REV: 12-03-97  
CAD FILE:

THIS INSTRUMENT WAS PREPARED BY MARY HANNA CLODFELTER, P.S.M. IN THE OFFICES OF MOCK, ROOS & ASSOCIATES, INC., 5720 CORPORATE WAY, WEST PALM BEACH, FLORIDA 33407.

SCALE:  
1" = 40'  
P.A. NO.: 94182.14  
DATE: OCTOBER, 1997  
DRAWING NO. 46-42-28-143

**MOCK ROOS**  
ENGINEERS SURVEYORS PLANNERS  
5720 Corporate Way, West Palm Beach, Florida 33407  
(561) 683-3113, fax 478-7248

**ADDISON RESERVE PARCEL SEVENTEEN**  
PART OF GLENEAGLES/POLO CLUB WEST P.U.D.  
BEING A REPLAT OF TRACT 17 AND TRACT G  
"ADDISON RESERVE PLAT FOUR"  
(P.B. 79, PGS. 76-81)  
SITUATE IN SECTION 28, TOWNSHIP 46 SOUTH, RANGE 42 EAST  
PALM BEACH COUNTY, FLORIDA

SHEET 3 OF 3

0230-027

82/51

ADDISON RESERVE  
 PAGE 51  
 FLOOD ZONE 2.15A  
 ZONING RTS USE  
 80-215 ZIP CODE 33494  
 SEE NAME The Polo Club West

TKZ 476