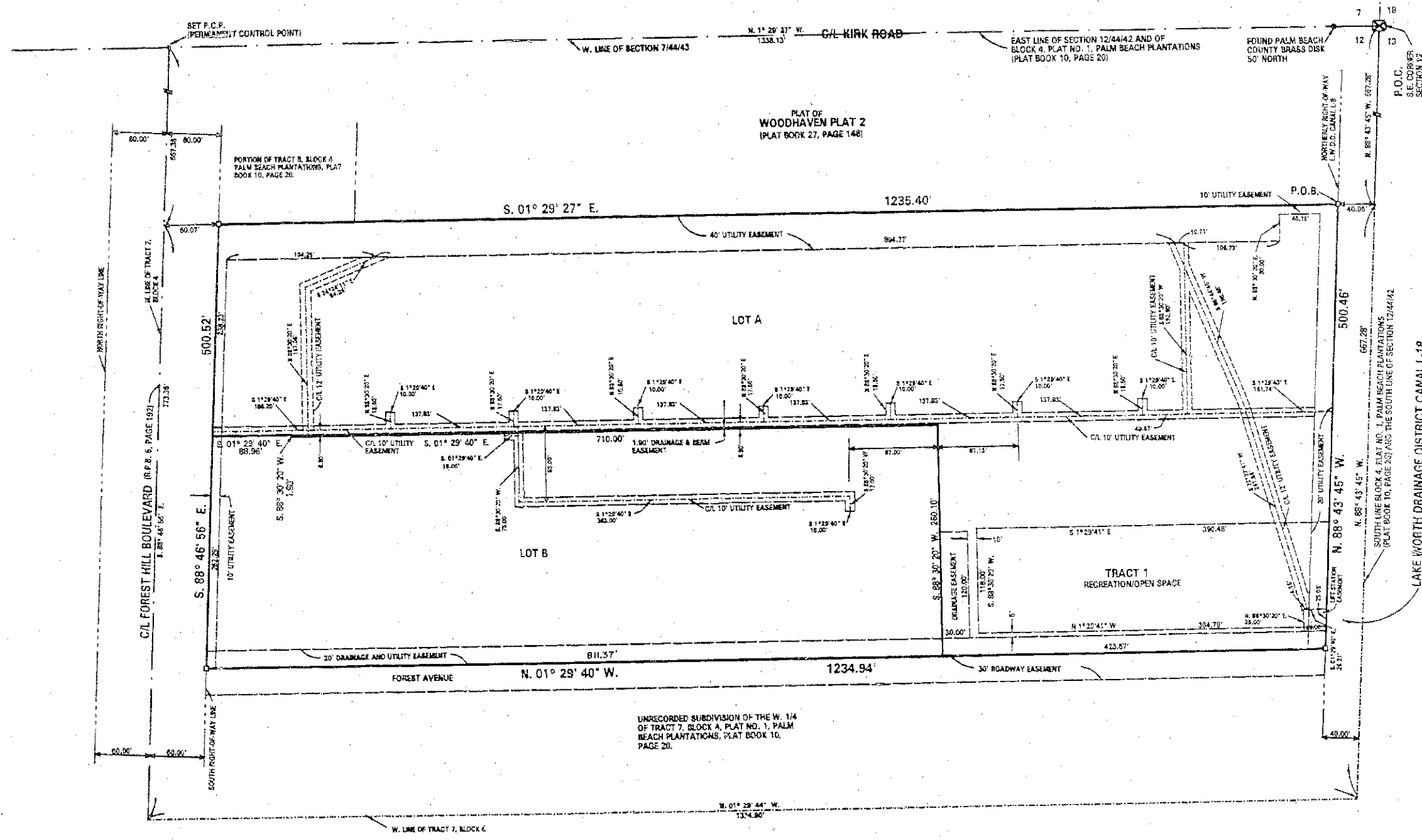
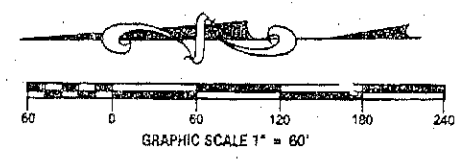


PLAT OF PALM SPRINGS ADDITION

A REPLAT OF PART OF TRACT 7, BLOCK 4, PLAT NO. 1, PALM BEACH PLANTATIONS
PLAT BOOK 10, PAGE 20, PUBLIC RECORDS OF PALM BEACH COUNTY, FLORIDA, LYING IN
SECTION 12, TOWNSHIP 44 SOUTH, RANGE 42 EAST, PALM BEACH COUNTY, FLORIDA.
VILLAGE OF PALM SPRINGS

SHEET 2 OF 2 MARCH 1998



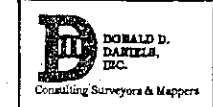
- SURVEYOR'S NOTES:**
1. Bearings shown herein are based on Palm Beach County 1972 Free Adjusted State Plane Coordinate system and are relative to a bearing of N. 88° 43' 45" W., along the South line of the S.E. 1/4 of Section 12 as shown.
 2. All dimensions and bearings shown herein are projected from those shown on the record plat of PLAT NO. 1, PALM BEACH PLANTATIONS.
 3. Permanent Reference Monument (P.R.M.) indicated thus: \square and is set with disk marked "PRM 2608".
 4. No structures, shrubs or trees shall be placed in drainage or utility easements except as otherwise permitted by the Village of Palm Springs.
 5. Lot Acreage: Lot A contains 9.36 acres
Lot B contains 4.81 acres

ABBREVIATIONS

L.W.D.D. = Lake Worth Drainage District
 P.R.M. = Permanent Reference Monument
 P.O.C. = Point of Commencement
 C/L = Centerline
 P.O.B. = Point of Beginning
 R.P.B. = Road Plat Book
 D.E. = Drainage Easement

NOTE: There may be additional restrictions that are not recorded on this plat that may be found in the Public Records of this county.

This instrument was prepared by Donald D. Daniels, PSM in the office of Donald D. Daniels, Inc., 725 North A-1-A, Suite C-111, Jupiter, Florida 33477 Florida Certificate Licensed Business No. 4165. TEL: (561) 747-8634



PLAT OF
PALM SPRINGS ADDITION

DWG. NO.: 87-061