

JONES - PARCEL "D-2"

A PORTION OF JONES P.U.D., BEING A REPLAT OF TRACT "F" AND TRACT "E", JONES - PARCEL "D" AS RECORDED IN PLAT BOOK 79, PAGES 187 THROUGH 192 OF THE PUBLIC RECORDS OF PALM BEACH COUNTY, FLORIDA, SITUATE IN SECTION 33, TOWNSHIP 45 SOUTH, RANGE 42 EAST, PALM BEACH COUNTY, FLORIDA

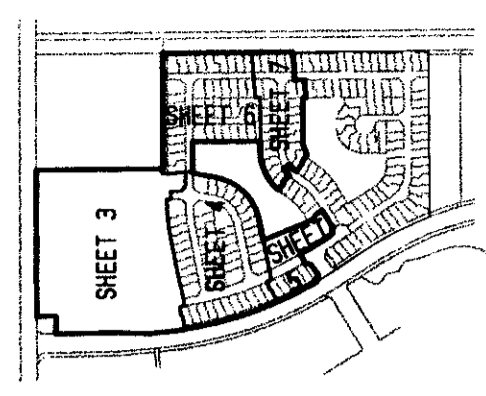
SHEET 5 OF 7

MARCH 1998

STATE OF FLORIDA } SS
COUNTY OF PALM BEACH }
THIS PLAT WAS FILED FOR
RECORD AT _____ DAY OF
THIS _____ AD, 1998 AND
DULY RECORDED IN PLAT BOOK
_____ ON PAGES _____ AND

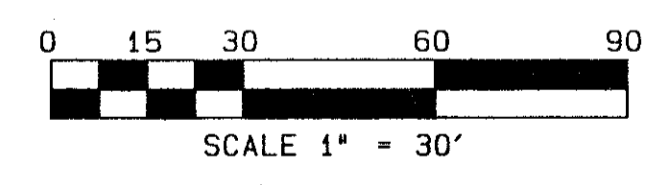
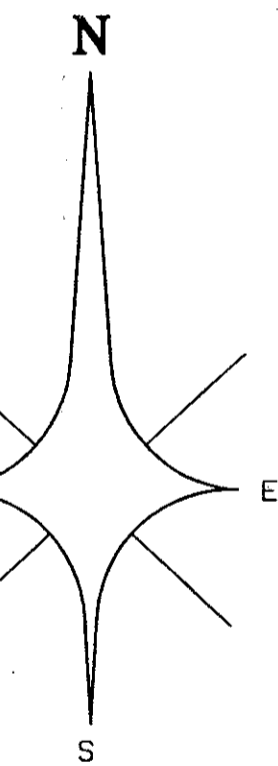
DOROTHY H. WILKEN, CLERK
CIRCUIT COURT
BY: _____ DC

KEY MAP
NOT TO SCALE



LEGEND:

- A = CENTRAL ANGLE/DELTA
- C = CENTERLINE
- CH = CHORD
- D.B. = DEED BOOK
- D.E. = DRAINAGE EASEMENT
- F.P. & L. = FLORIDA POWER AND LIGHT COMPANY
- A = ARC LENGTH
- L.A.E. = LIMITED ACCESS EASEMENT
- L.M.A.E. = LAKE MAINTENANCE ACCESS EASEMENT
- L.M.E. = LAKE MAINTENANCE EASEMENT
- L.W.D. = LAKE WORTH DRAINAGE DISTRICT
- N.R. = NON-RADIAL
- N.T.S. = NOT TO SCALE
- O.R.B. = OFFICIAL RECORDS BOOK
- P.B. = PLAT BOOK
- PG. = PAGE
- P.O.B. = POINT OF BEGINNING
- P.O.C. = POINT OF COMMENCEMENT
- R = RADIUS (RADII)
- R.F. = RADIAL TO FRONT LOT LINE
- R.H. = RADIAL TO REAR LOT LINE
- R.W. = RIGHT OF WAY
- U.E. = UTILITY EASEMENT
- W.C. = WITNESS CORNER
- Z.L.L.M.E. = ZERO LOT LINE MAINTENANCE EASEMENT
- ⊙ = PERMANENT CONTROL POINT (PCP)
- PCP #4380
- = PERMANENT REFERENCE MONUMENT (PRM)
- SET PRM #4380



*PET. 95-19
ALOC. #0001 *
NO SCHOOLS -
RESTRICTIVE COVENANT
5/3/3/K*

**ROADS
BEFORE \$490⁰⁰ PER UNIT MF
RETIEMENT UNIT
12/1/97 \$1320⁰⁰ PER UNIT SFD
12/1/97 \$1089⁰⁰ PER UNIT MF
RETIEMENT UNIT
01/31/98 \$1452⁰⁰ PER UNIT SFD*

0683-003

82/109

BOOK 82
PAGE 109
FLOOD ZONE B
LOAD # FC
SR 95-019
ZIP CODE 33403
TWP NAME Amherst PUD

ATLANTIC - CARIBBEAN MAPPING, INC.
3062 JOG ROAD - GREENACRES, FLORIDA 33467
(561) 964-7884; FAX (561) 964-1969