

CITATION CLUB REPLAT

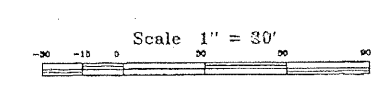
BEING A REPLAT OF A PORTION OF CITATION CLUB AS RECORDED IN PLAT BOOK 76, PAGES 181 THROUGH 187, PUBLIC RECORDS OF PALM BEACH COUNTY, FLORIDA AND A PORTION OF SECTION 25, TOWNSHIP 46 SOUTH, RANGE 42 EAST, CITY OF DELRAY BEACH, PALM BEACH COUNTY, FLORIDA.
SHEET 8 OF 8 SHEETS

MAY, 1998

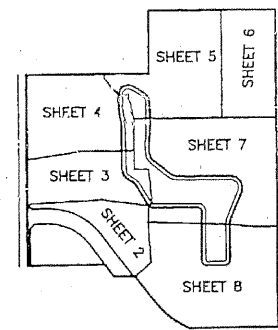
MATCH TO SHEET 7

134

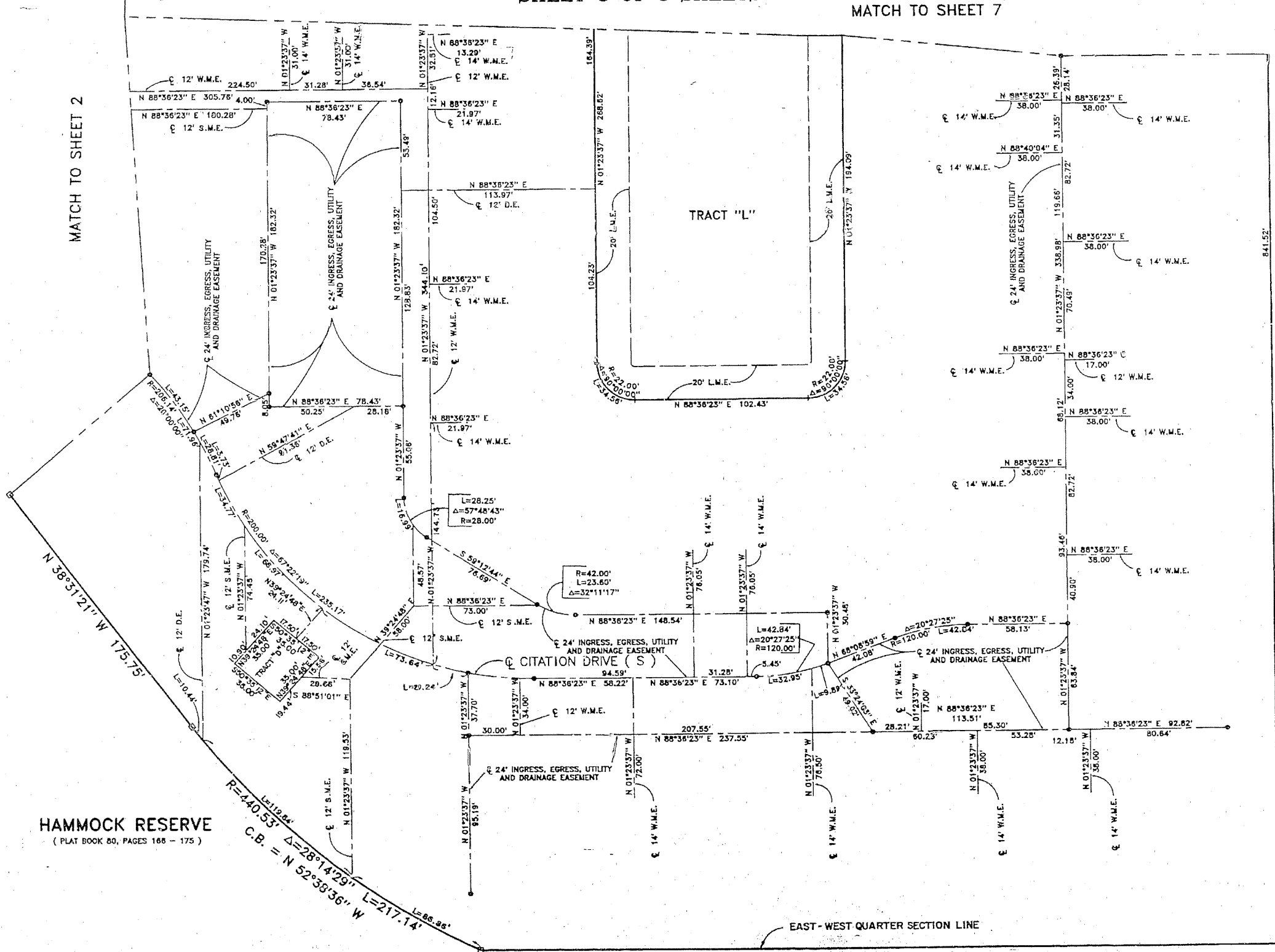
STATE OF FLORIDA
COUNTY OF PALM BEACH
This Plat was filed for record at _____
M, this _____ day of _____, 19____
and duly recorded in Plat Book No. _____
on Page _____
Dorothy H. Wilken, Clerk of the Circuit Court
By _____ D.C.



HAMMOCK RESERVE
(PLAT BOOK 80, PAGES 166 - 175)



S 01°24'58" E 1682.52'



HAMMOCK RESERVE
(PLAT BOOK 80, PAGES 166 - 175)

HAMMOCK RESERVE S 88°47'15" W 466.89'
(PLAT BOOK 80, PAGES 166 - 175)



Landmark Surveying & Mapping Inc.
1850 FOREST HILL BOULEVARD
PH. (561)433-5405 SUITE 100 W.P.B. FLORIDA

CITATION CLUB REPLAT