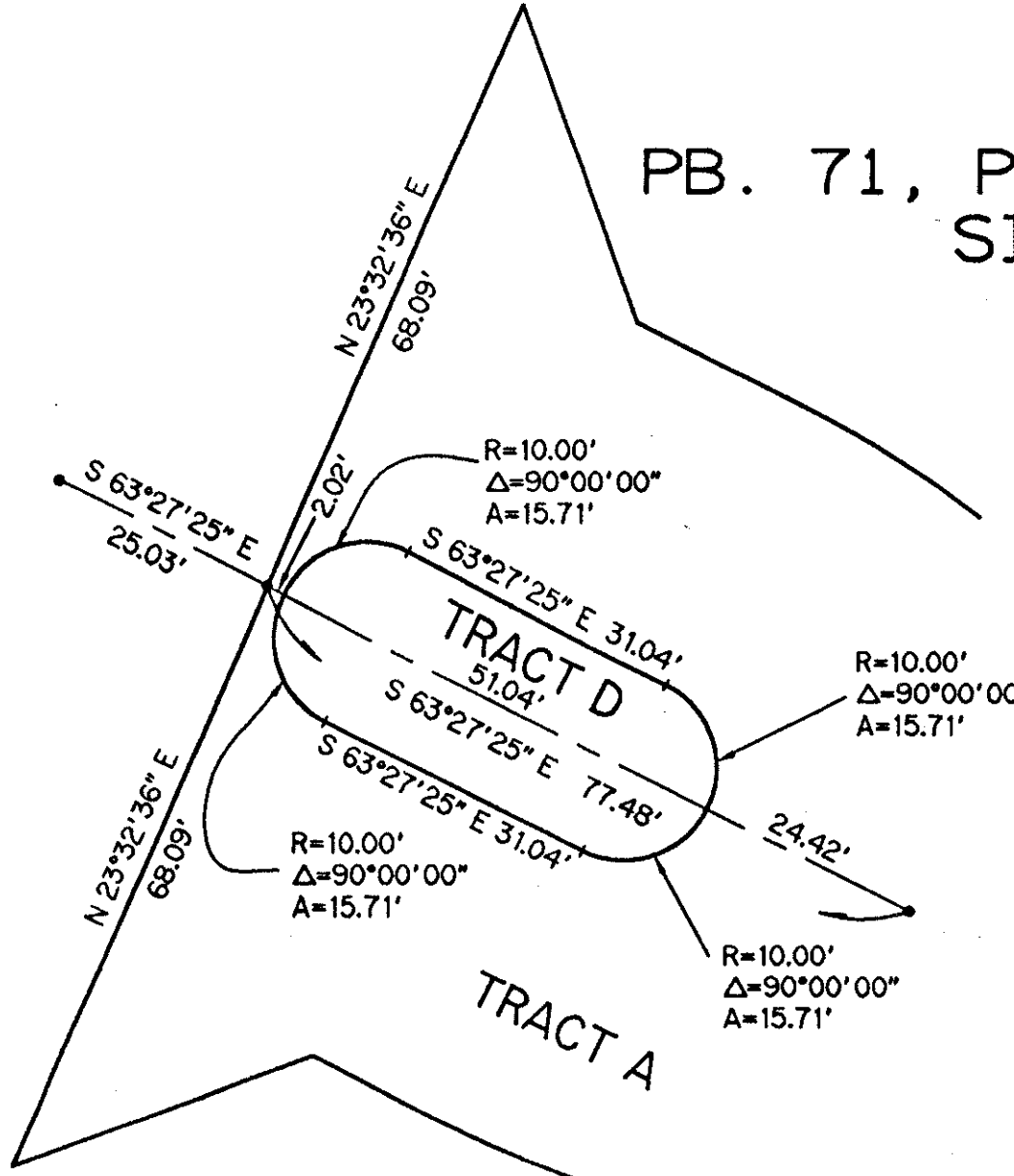


VINTAGE OAKS ESTATES

FEBRUARY 1998

142

PART OF THE POLO CLUB P.U.D.
 REPLAT OF LOTS 87 - 91, PORTION OF TRACTS 'A' & 'B' "THE POLO OAKS"
 PB. 71, PGS. 117 - 123, OF THE PUBLIC RECORDS OF PALM BEACH COUNTY, FLORIDA, AND A PORTION OF SECTION 26
 SITUATE IN SECTION 26, TOWNSHIP 46 SOUTH, RANGE 42 EAST, PALM BEACH COUNTY, FLORIDA



DETAIL "A"
SCALE: 1" = 20'

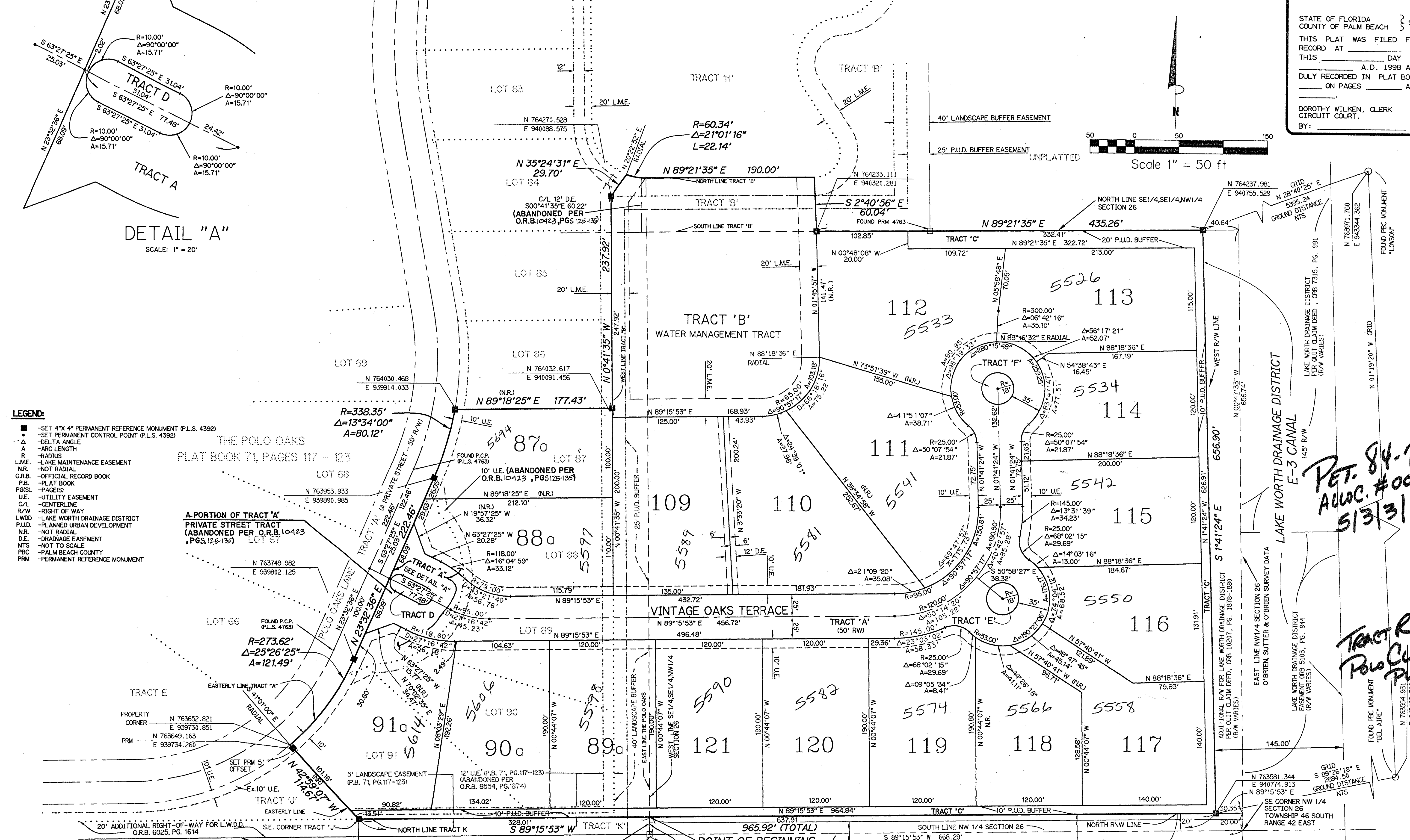
LEGEND:

- -SET 4"X 4" PERMANENT REFERENCE MONUMENT (P.L.S. 4392)
- -SET PERMANENT CONTROL POINT (P.L.S. 4392)
- Δ -DELTA ANGLE
- A -ARC LENGTH
- R -RADIUS
- L.M.E. -LAKE MAINTENANCE EASEMENT
- N.R. -NOT RADIAL
- O.R.B. -OFFICIAL RECORD BOOK
- P.B. -PLAT BOOK
- PG(S). -PAGE(S)
- U.E. -UTILITY EASEMENT
- C/L -CENTERLINE
- R/W -RIGHT OF WAY
- L.W.D. -LAKE WORTH DRAINAGE DISTRICT
- P.U.D. -PLANNED URBAN DEVELOPMENT
- N.R. -NOT RADIAL
- D.E. -DRAINAGE EASEMENT
- NTS -NOT TO SCALE
- PBC -PALM BEACH COUNTY
- PRM -PERMANENT REFERENCE MONUMENT

THE POLO OAKS
PLAT BOOK 71, PAGES 117 - 123

A PORTION OF TRACT 'A'
PRIVATE STREET TRACT
(ABANDONED PER O.R.B. 10-123
PGS. 125-129)

SUBDIVISION: Vintage Oaks Estates
 FROM: 88
 PAGE: 142
 FLOOD MAP: # 2208
 ZONING: RTS/SE
 QUID: # 31
 CASE: 84-71
 ZIP CODE: 33487
 PUD NAME: Polo Club



STATE OF FLORIDA } SS
 COUNTY OF PALM BEACH }
 THIS PLAT WAS FILED FOR
 RECORD AT _____ DAY OF
 _____ A.D. 1998 AND
 DULY RECORDED IN PLAT BOOK
 _____ ON PAGES _____ AND

 DOROTHY WILKEN, CLERK
 CIRCUIT COURT.
 BY: _____ DC

Scale 1" = 50 ft

PET. 84-71A
 ALLOC. #0001
 5/3/3/K

TRACT R
 Polo Club
 PUD

POINT OF COMMENCEMENT
 MOST SOUTHERLY SE CORNER
 THE POLO OAKS
 PB. 71, PG. 117-123
 FOUND PRM 4763

POINT OF BEGINNING
 N.E. CORNER TRACT "K"
 N 00°41'35" W 20.00'

6.8' ADDITIONAL R/W FOR LAKE WORTH DRAINAGE DISTRICT
 PER QUIT CLAIM DEED, ORB 10207, PG. 1878-1880

KESHAVARZ & ASSOCIATES, INC.
 THIS INSTRUMENT WAS PREPARED BY CHARLES H. ANDERSON
 IN THE OFFICES OF KESHAVARZ & ASSOCIATES, INC.
 1230 N. CONGRESS AVENUE, SUITE 206
 WEST PALM BEACH, FLORIDA 33409
 (561) 689-8600 / FAX 689-7476

0436-052