

VILLAGE SQUARE PROFESSIONAL PARK

BEING A PORTION OF SECTION 8, TOWNSHIP 42 SOUTH, RANGE 43 EAST
CITY OF PALM BEACH GARDENS, PALM BEACH COUNTY, FLORIDA FEBRUARY 1998

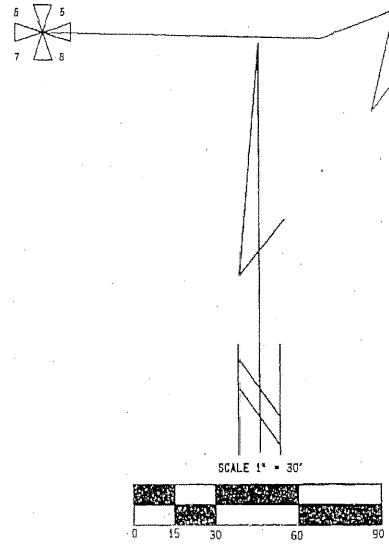
144

SHEET 2 OF 2

FOUND NORTHWEST CORNER SECTION 8
TOWNSHIP 42 SOUTH, RANGE 43 EAST

R. C. A. BOULEVARD (MONET DRIVE) P. O. B.

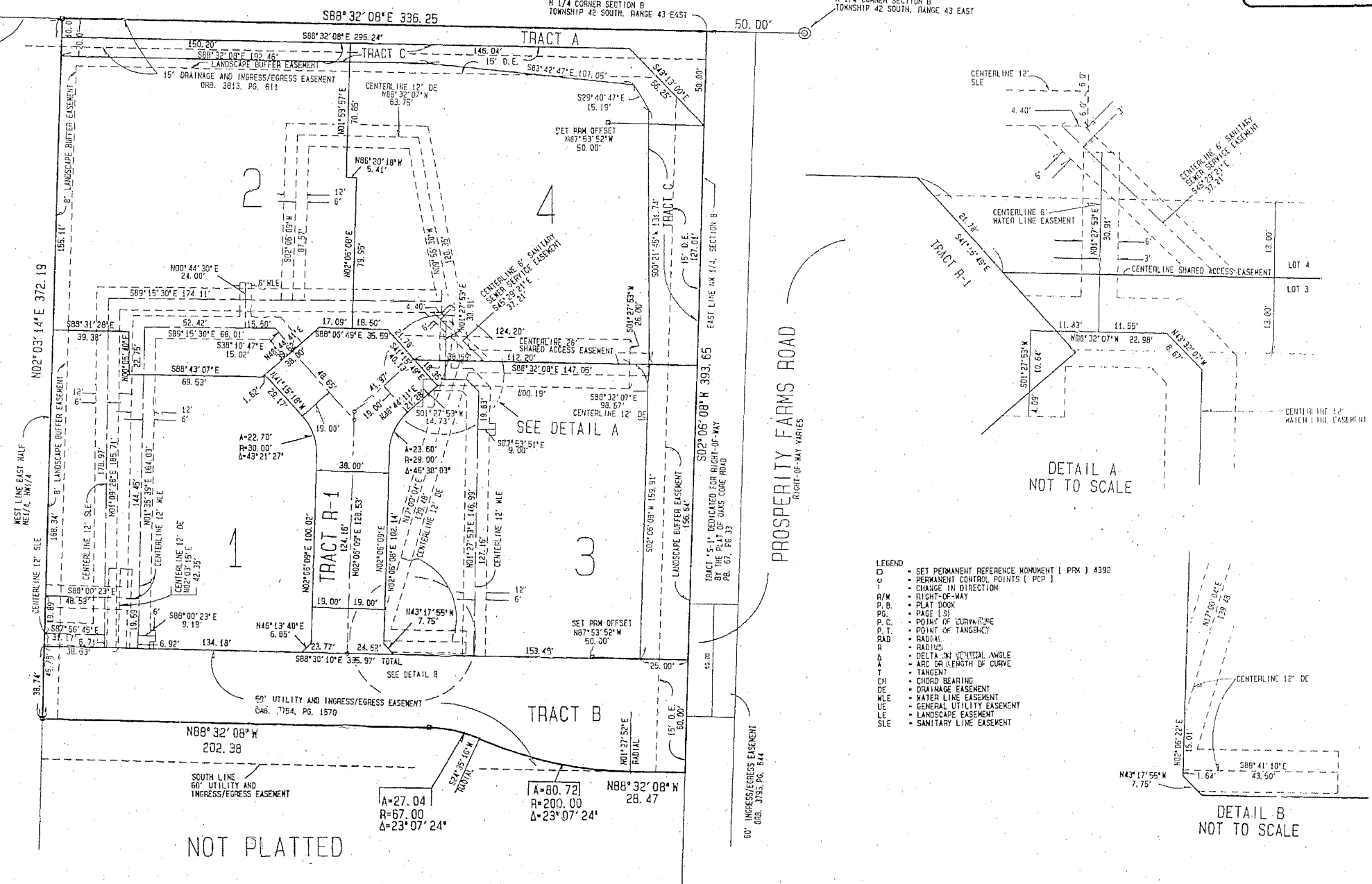
FOUND PALM BEACH COUNTY
N 1/4 CORNER SECTION 8
TOWNSHIP 42 SOUTH, RANGE 43 EAST



NOT PLATTED

NOTES:

1. THERE MAY BE ADDITIONAL RESTRICTIONS THAT ARE NOT RECORDED ON THIS PLAT THAT MAY BE FOUND IN THE PUBLIC RECORDS OF THIS COUNTY.
2. WHERE DRAINAGE AND UTILITY EASEMENTS INTERSECT, DRAINAGE EASEMENTS WILL TAKE PRECEDENCE.
3. NO BUILDINGS, IMPROVEMENTS OF ANY KIND, TREES OR SHRUBS SHALL BE PLACED ON ANY EASEMENT WITHOUT THE PRIOR WRITTEN APPROVAL OF ALL EASEMENT BENEFICIARIES AND ALL APPLICABLE CITY OR COUNTY APPROVALS OR PERMITS AS REQUIRED FOR SUCH ENCROACHMENTS.
4. APPROVAL OF LANDSCAPING ON UTILITY EASEMENTS OTHER THAN WATER AND SEWER SHALL BE ONLY WITH APPROVAL OF THE UTILITIES OCCUPYING SAME.
5. LOT LINES ARE NOT RADIAL UNLESS NOTED (RAD).
6. BEARING BASIS: BEARINGS HEREON ARE RELATIVE TO THE SOUTH LINE OF THE NORTHWEST ONE-QUARTER OF SECTION 8, TOWNSHIP 42 SOUTH, RANGE 43 EAST, BEING SOUTH 88° 32' 08" EAST.



LEGEND

- SET PERMANENT REFERENCE MONUMENT (PRM) 4392
- PERMANENT CONTROL POINTS (PCP)
- CHANGE IN DIRECTION
- RIGHT-OF-WAY
- ▭ PLAT BOOK
- PG. PAGE (S)
- P.C. POINT OF CURVATURE
- P.T. POINT OF TANGENCY
- RAD. RADIAL
- R. RADIUS
- Δ DELTA 30° VERTICAL ANGLE
- ARC OR LENGTH OF CURVE
- T. TANGENT
- CH. CHORD BEARING
- DE. DRAINAGE EASEMENT
- WLE. WATER LINE EASEMENT
- ULE. GENERAL UTILITY EASEMENT
- LE. LANDSCAPE EASEMENT
- SE. SANITARY LINE EASEMENT

DETAIL A
NOT TO SCALE

DETAIL B
NOT TO SCALE

NOT PLATTED

KESHAV ASSOCIATES, INC.
THIS INSTRUMENT WAS PREPARED BY CHARLES H. ANDERSON
AN EMPLOYEE OF KESHAV ASSOCIATES, INC.
1250 N. LINDSEY AVENUE, SUITE 205
WEST PALM BEACH, FLORIDA 33409
(561) 689-8600 / FAX 689-7476