

SAINT ANDREW'S SCHOOL PLAT

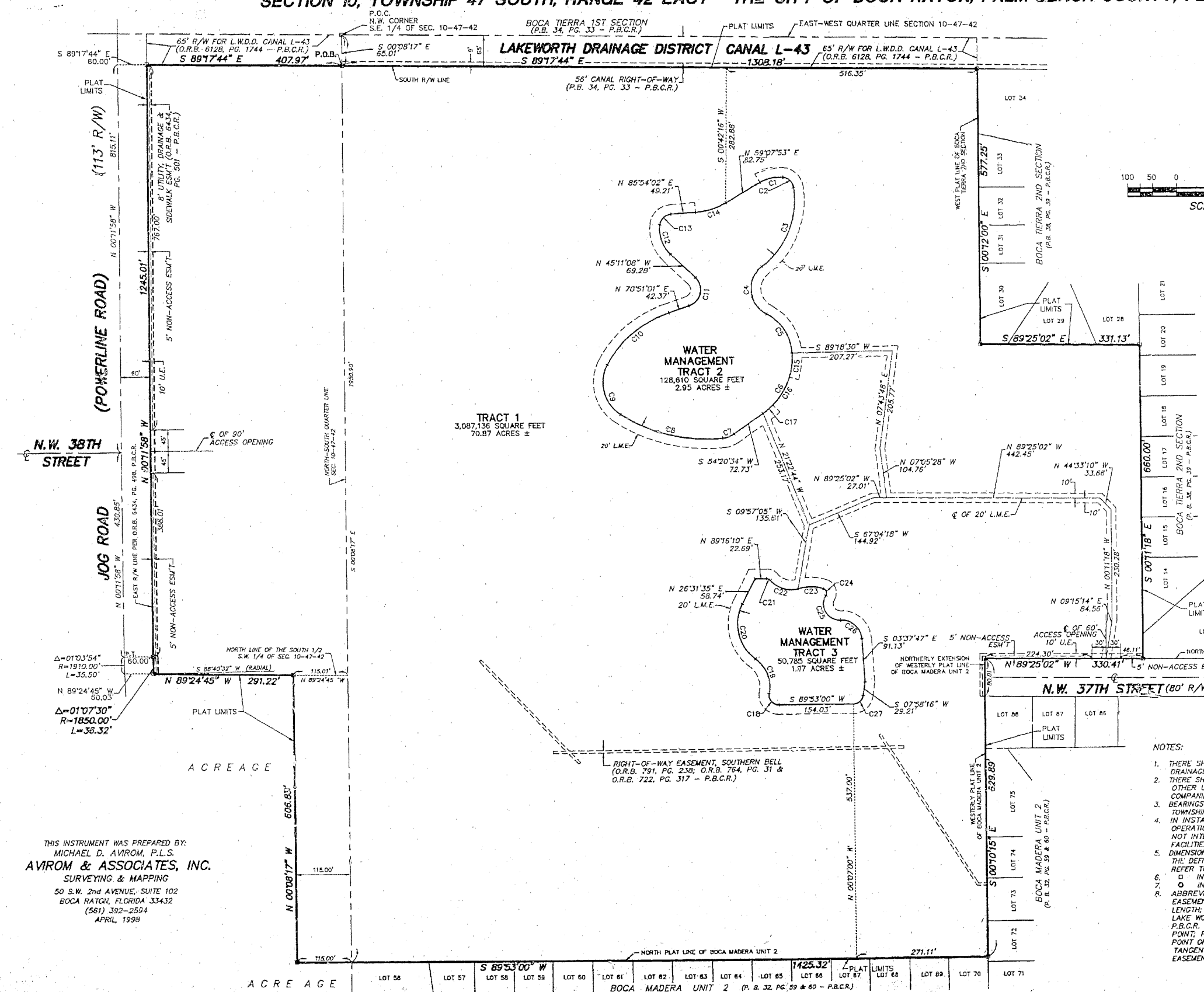
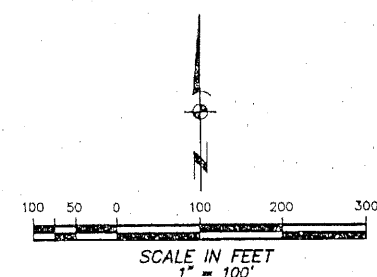
A PORTION OF THE SOUTHEAST ONE-QUARTER (S.E. 1/4) AND THE SOUTHWEST ONE-QUARTER (S.W. 1/4) OF SECTION 10, TOWNSHIP 47 SOUTH, RANGE 42 EAST - THE CITY OF BOCA RATON, PALM BEACH COUNTY, FLORIDA.

154

STATE OF FLORIDA
 COUNTY OF PALM BEACH
 This plat was filed for record
 at _____ this _____
 day of _____, 1998,
 and duly recorded in Plat Book
 _____ Pages _____ through _____

DOROTHY H. WILKEN
 Clerk of Circuit Court
 By: _____

SHEET 2 OF 2



CURVE TABLE FOR WATER MANAGEMENT TRACTS

CURVE	RADIUS	LENGTH	TANGENT	CHORD	BEARING	DELTA
C1	75.00'	48.05'	24.88'	47.23'	S 77°29'01" W	36°42'15"
C2	25.00'	33.26'	19.61'	30.86'	N 46°02'56" W	76°13'52"
C3	181.10'	186.71'	102.61'	178.55'	N 21°16'06" E	59°04'12"
C4	60.00'	117.31'	88.99'	99.50'	S 04°52'25" E	112°01'12"
C5	100.00'	100.76'	55.12'	96.55'	N 32°01'10" W	57°43'42"
C6	145.00'	145.51'	79.55'	139.48'	N 25°35'38" E	57°29'52"
C7	50.00'	26.22'	13.42'	25.92'	N 69°21'53" E	30°02'39"
C8	315.00'	216.05'	112.47'	211.84'	S 75°57'51" E	39°17'54"
C9	80.00'	117.21'	71.96'	107.00'	S 14°20'38" E	83°56'32"
C10	225.00'	169.74'	89.14'	165.74'	S 49°14'19" W	43°13'23"
C11	36.00'	72.91'	57.65'	61.07'	N 12°49'57" E	116°02'08"
C12	75.00'	68.77'	37.01'	66.38'	S 18°55'08" E	62°31'59"
C13	25.00'	34.28'	20.45'	31.65'	S 46°37'22" W	78°33'11"
C14	140.00'	65.41'	33.31'	64.82'	N 72°30'58" E	26°46'09"
C15	145.00'	50.61'	25.57'	50.36'	N 08°50'40" E	19°58'56"
C16	145.00'	68.63'	34.87'	67.99'	N 30°24'13" E	27°07'11"
C17	145.00'	26.27'	13.17'	26.23'	N 49°09'11" E	10°22'45"
C18	20.00'	35.47'	24.52'	31.00'	S 39°18'58" E	101°36'03"
C19	74.00'	81.67'	45.56'	77.59'	N 20°08'05" W	63°14'16"
C20	94.00'	128.43'	76.50'	118.67'	S 12°36'48" E	78°16'48"
C21	10.00'	9.07'	4.87'	8.76'	N 64°45'15" W	51°57'10"
C22	54.00'	63.31'	35.86'	59.75'	S 72°21'57" E	67°10'34"
C23	84.00'	52.09'	26.73'	51.43'	S 89°55'22" W	31°45'10"
C24	10.00'	18.55'	13.35'	16.01'	N 21°02'48" W	106°18'30"
C25	34.00'	73.65'	64.10'	60.07'	S 29°57'02" E	124°06'58"
C26	42.00'	64.79'	40.83'	58.55'	N 47°45'09" W	88°22'44"
C27	20.00'	28.59'	17.36'	26.22'	N 48°55'38" E	81°54'44"

NOTICE:
 THERE MAY BE ADDITIONAL RESTRICTIONS THAT ARE NOT RECORDED ON THIS PLAT THAT MAY BE FOUND IN THE PUBLIC RECORDS OF PALM BEACH COUNTY.

NOTES:

1. THERE SHALL BE NO BUILDINGS OR ANY KIND OF CONSTRUCTION, PLACED ON UTILITY OR DRAINAGE EASEMENTS, EXCEPT DRIVEWAYS AND/OR SIDEWALKS.
2. THERE SHALL BE NO TREES OR SHRUBS, PLACED ON UTILITY EASEMENTS. LANDSCAPING ON OTHER UTILITY EASEMENTS SHALL BE ALLOWED ONLY AFTER CONSENT OF ALL UTILITY COMPANIES HAVING THE RIGHT TO OCCUPY THE SAME.
3. BEARINGS SHOWN HEREON ARE RELATIVE TO THE EAST-WEST QUARTER LINE OF SECTION 10, TOWNSHIP 47 SOUTH, RANGE 42 EAST, HAVING A BEARING OF S89°17'44" E.
4. IN INSTANCES WHERE DRAINAGE AND UTILITY EASEMENTS INTERSECT, CONSTRUCTION, OPERATION, AND MAINTENANCE OF UTILITIES WITHIN THESE AREA OF INTERSECTION SHALL NOT INTERFERE WITH THE CONSTRUCTION, OPERATION, AND MAINTENANCE OF DRAINAGE FACILITIES.
5. DIMENSIONS SHOWN HEREON ARE IN FEET AND DECIMAL PARTS THEREOF AND ARE BASED ON THE DEFINITION OF FOOT AS ADOPTED BY THE UNITED STATES BUREAU OF STANDARDS AND REFER TO THE HORIZONTAL PLANE.
6. □ INDICATES SET PERMANENT REFERENCE MONUMENT (P.R.M.) STAMPED L.B. #3300.
7. ○ INDICATES SET 5/8" IRON ROD WITH CAP L.B. #3300 UNLESS NOTED OTHERWISE.
8. ABBREVIATION LEGEND: C = CENTERLINE; Δ = CENTRAL ANGLE; D.E. = DRAINAGE EASEMENT; ESM'T = EASEMENT; F.P.L. = FLORIDA POWER & LIGHT COMPANY; L = ARC LENGTH; L.B. = LICENSED BUSINESS; L.M.E. = LAKE MAINTENANCE EASEMENT; L.W.D.D. = LAKE WORTH DRAINAGE DISTRICT; O.R.B. = OFFICIAL RECORDS BOOK; P.B. = PLAT BOOK; P.B.C.R. = PALM BEACH COUNTY RECORDS; PG. = PAGE; P.C.P. = PERMANENT CONTROL POINT; P.L.S. = PROFESSIONAL LAND SURVEYOR; P.O.B. = POINT OF BEGINNING; P.O.C. = POINT OF COMMENCEMENT; P.R.M. = PERMANENT REFERENCE MONUMENT; P.T. = POINT OF TANGENCY; R = RADIUS; R/W = RIGHT-OF-WAY; SEC. = SECTION; U.E. = UTILITY EASEMENT.

THIS INSTRUMENT WAS PREPARED BY:
 MICHAEL D. AVIROM, P.L.S.
AVIROM & ASSOCIATES, INC.
 SURVEYING & MAPPING
 50 S.W. 2nd AVENUE, SUITE 102
 BOCA RATON, FLORIDA 33432
 (561) 392-2594
 APRIL, 1998

LOT 56	LOT 57	LOT 58	LOT 59	LOT 60	LOT 61	LOT 62	LOT 63	LOT 64	LOT 65	LOT 66	LOT 67	LOT 68	LOT 69	LOT 70	LOT 71
BOCA MADERA UNIT 2 (P.B. 32, PG. 59 & 60 - P.B.C.R.)											BOCA MADERA UNIT 2 (P.B. 32, PG. 59 & 60 - P.B.C.R.)		BOCA MADERA UNIT 2 (P.B. 32, PG. 59 & 60 - P.B.C.R.)		