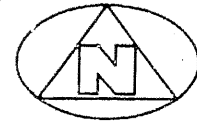


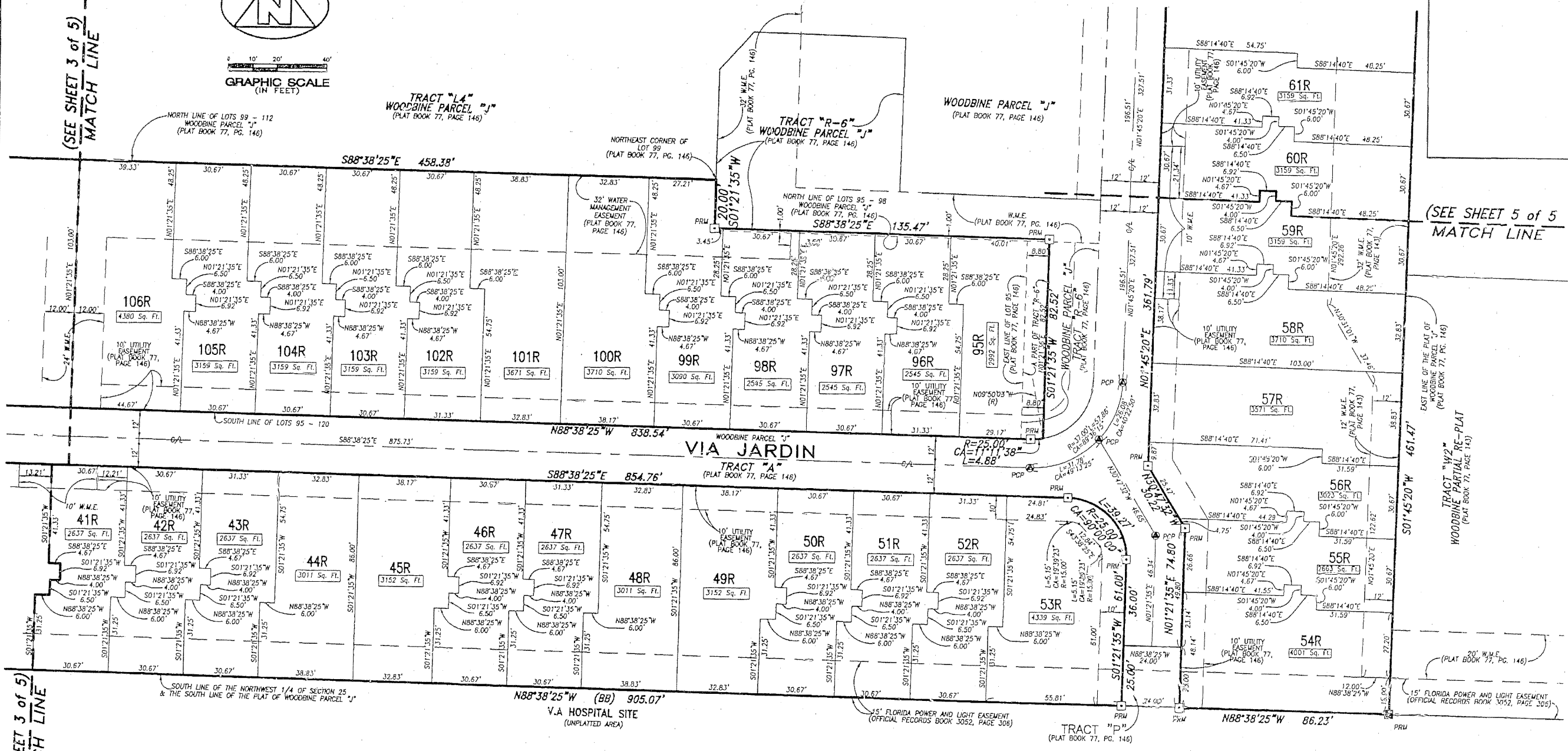
(A PART OF WOODBINE RESIDENTIAL PLANNED UNIT DEVELOPMENT)
 BEING A RE-PLAT OF A PORTION OF WOODBINE PARCEL "J", LYING IN THE NORTHWEST ONE-QUARTER OF SECTION 25, TOWNSHIP 42 SOUTH, RANGE 42 EAST, CITY OF RIVIERA BEACH, AS RECORDED IN PLAT BOOK 77, PAGE 146, PUBLIC RECORDS, PALM BEACH COUNTY, FLORIDA.



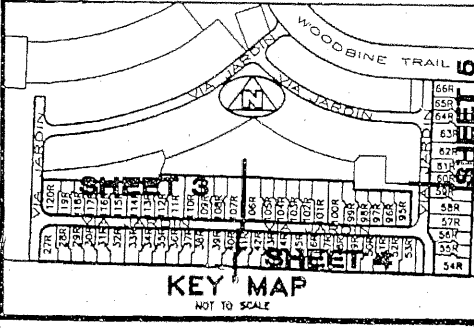
GRAPHIC SCALE
 (IN FEET)

(SEE SHEET 3 of 5)
 MATCH LINE

(SEE SHEET 5 of 5)
 MATCH LINE



(SEE SHEET 3 of 5)
 MATCH LINE



- SYMBOLS, NOTES AND LEGEND:**
1. THE BASE BEARING, (BB) AS SHOWN HEREON IS N88°38'25"W ALONG THE SOUTH LINE OF THE NORTHWEST ONE-QUARTER OF SECTION 25/42/42 PALM BEACH COUNTY, FLORIDA.
 2. IN THOSE INSTANCES WHERE UTILITY/DRAINAGE STRUCTURES ARE CONSTRUCTED IN CONJUNCTION WITH THE PLATTED PERMANENT CONTROL POINTS (P.C.P.) POSITION, STRADDLES MARKED AS PERMANENT CONTROL POINTS WILL BE SET TO REFERENCE THE PLATTED P.C.P. POSITION.
 3. LINES WHICH INTERSECT CURVES ARE NOT RADIAL, UNLESS OTHERWISE NOTED.
 4. (R) DENOTES RADIAL LINE
 5. C/L DENOTES A CENTERLINE
 6. □ DENOTES A SET #2424 PERMANENT REFERENCE MONUMENT (P.R.M.)
 7. ○ DENOTES A SET #2424 PERMANENT CONTROL POINT (P.C.P.)
 8. ⊠ DENOTES A FOUND #2424 PERMANENT REFERENCE MONUMENT (P.R.M.)
 9. ⊙ DENOTES A FOUND #2424 PERMANENT CONTROL POINT (P.C.P.)

NOTE:
 THE UTILITY EASEMENTS AND WATER MANAGEMENT EASEMENTS ARE EXISTING AND WERE TAKEN FROM THE PLAT OF WOODBINE PARTIAL RE-PLAT, ACCORDING TO THE PLAT THEREOF, AS RECORDED IN PLAT BOOK 77, PAGE 143, AND THE PLAT OF WOODBINE PARCEL "J", ACCORDING TO THE PLAT THEREOF, AS RECORDED IN PLAT BOOK 77, PAGE 146, PUBLIC RECORDS, PALM BEACH COUNTY, FLORIDA.
 NO NEW UTILITY OR WATER MANAGEMENT EASEMENTS ARE BEING CREATED BY THIS PLAT.
 WATER MANAGEMENT EASEMENTS, (W.M.E.) AS SHOWN HEREON, MAY BE SUBJECT TO FURTHER USE FOR WATER SUPPLY, ELECTRICAL POWER, TELECOMMUNICATIONS, AND CABLE TELEVISION. THERE SHALL BE NO PLACEMENT OF SUCH FACILITIES ON OR UNDER WATER MANAGEMENT EASEMENTS UNLESS PREVIOUSLY APPROVED, IN WRITTEN FORM BY THE NORTHERN PALM COUNTY IMPROVEMENT DISTRICT.

THIS INSTRUMENT WAS PREPARED BY WM. R. VAN CAMPEN, P.S.M., IN AND FOR THE OFFICES OF BENCH MARK LAND SURVEYING & MAPPING, INC., 4152 WEST BLUE HERON BOULEVARD, SUITE 121, RIVIERA BEACH, FLORIDA.

BENCH MARK
 Land Surveying and Mapping, Inc.
 4152 West of a Heron Blvd., Suite 121, Riviera Beach, FL 33404
 Fax (561) 84-9659 L.R. No. 4171 Phone (561) 848-2102

RECORD PLAT	
WOODBINE PARCEL "J"	
PARTIAL RE-PLAT	
DWN DAN & SGO	DATE 3-1-98
CKD	FILE #111-83.dwg
SCALE 1" = 20'	SHEET 4 OF 5