

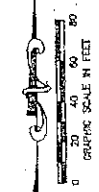
WINSTON TRAILS PARCEL ELEVEN PHASE II

PART OF WINSTON TRAILS P.U.D.
SITUATE IN SECTION 2, TOWNSHIP 45 SOUTH, RANGE 42 EAST
PALM BEACH COUNTY, FLORIDA
NOVEMBER, 1997 SHEET 6 OF 6

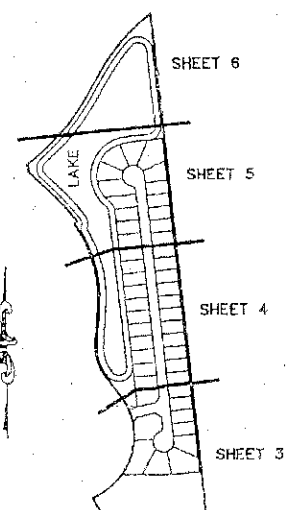
0587-014

189

STATE OF FLORIDA
COUNTY OF PALM BEACH
THIS PLAT WAS FILED FOR
RECORD _____ DAY OF _____
AD, 1997 AND DULY RECORDED
IN PLAT BOOK _____ ON PAGES
_____ AND _____
DOROTHY H. WILKEN, CLERK
BY _____ D.C.



CIRCUIT COURT SEAL



SHEET INDEX MAP
NOT TO SCALE

LEGEND

- L ARC LENGTH
- BE BUFFER EASEMENT
- Δ CENTRAL (DELTA) ANGLE
- DE DRAINAGE EASEMENT
- LWGD LAKE WORTH DRAINAGE DISTRICT
- LAE LIMITED ACCESS EASEMENT
- LWE LAKE MAINTENANCE EASEMENT
- ORB OFFICIAL RECORD BOOK
- PH PLAT BOOK
- PG(S) PAGE(S)
- R RADIUS
- LMAE LAKE MAINTENANCE ACCESS EASEMENT
- UE UTILITY EASEMENT
- ⊙ PERMANENT CONTROL POINT SET PSM# 4763
- 4x4 CONCRETE PERMANENT REFERENCE MONUMENT SET PSM# 4763
- 4x4 CONCRETE PERMANENT REFERENCE MONUMENT FOUND PSM# 4763
- C CENTERLINE
- (NR) NON-RADIAL

NOTES:

1. THE COORDINATES SHOWN HEREON ARE STATE PLANE GRID COORDINATES ACCORDING TO THE TRANSVERSE MERCATOR PROJECTION OF THE FLORIDA EAST ZONE, N.A.D. 83, PER THE 1990 ADJUSTMENT.
2. THE LINEAR DIMENSIONS SHOWN HEREON ARE GROUND DISTANCES IN U.S. FEET AND DECIMAL PARTS THEREOF.
3. THE GROUND DISTANCE TO GRID DISTANCE SCALE FACTOR IS 1.0000488 (GROUND DISTANCE X SCALE FACTOR = GRID DISTANCE).
4. ALL LINES WHICH INTERSECT CURVES ARE RADIAL TO THOSE CURVES UNLESS OTHERWISE NOTED.

NE CORNER OF THE
NW 1/4 OF SECTION 2
FOUND PALM BEACH
COUNTY GRASS DISK
N 820058.0523
E 940819.6580

WINSTON TRAILS
PARCEL TWELVE
(PB 81, PGS 83-85)

WATER MANAGEMENT
TRACT LK-1
TO BE MAINTAINED BY THE
WINSTON TRAILS FOUNDATION, INC.,
ITS SUCCESSORS AND ASSIGNS
SUBJECT TO EXISTING LITTORAL ZONE
RESTRICTIVE COVENANT AGREEMENT
ORB 9833, PG 1513
DE ORB 9803, PG 706

NOT PLATTED

LWGD E-3 CANAL

MATCH LINE SEE SHEET 5

THIS INSTRUMENT WAS PREPARED BY VARY HANNA CLOFFELTER, P.S.M. IN THE OFFICES OF MOCK, ROOS & ASSOCIATES, INC., 5720 CORPORATE WAY, WEST PALM BEACH, FLORIDA 33407.

SHEET 6 OF 6

SCALE: 1" = 40'
P.A. NO.: 87011.00
DATE: NOVEMBER 1997
DRAWING NO.: 45-42-02-05

MOCK ROOS
ENGINEERS & PLANNERS
5720 Corporate Way, West Palm Beach, Florida 33407
(561) 883-3113, Fax 479-7248

**WINSTON TRAILS
PARCEL ELEVEN PHASE II**
PART OF WINSTON TRAILS P.U.D.
SITUATE IN SECTION 2, TOWNSHIP 45 SOUTH,
RANGE 42 EAST
PALM BEACH COUNTY, FLORIDA

WINTRP24.dwg 6-1-98 12:45:34, etc. EST

FORMER: 51-09-38
CAD FILE:
MUSEWAT/WINTRP24