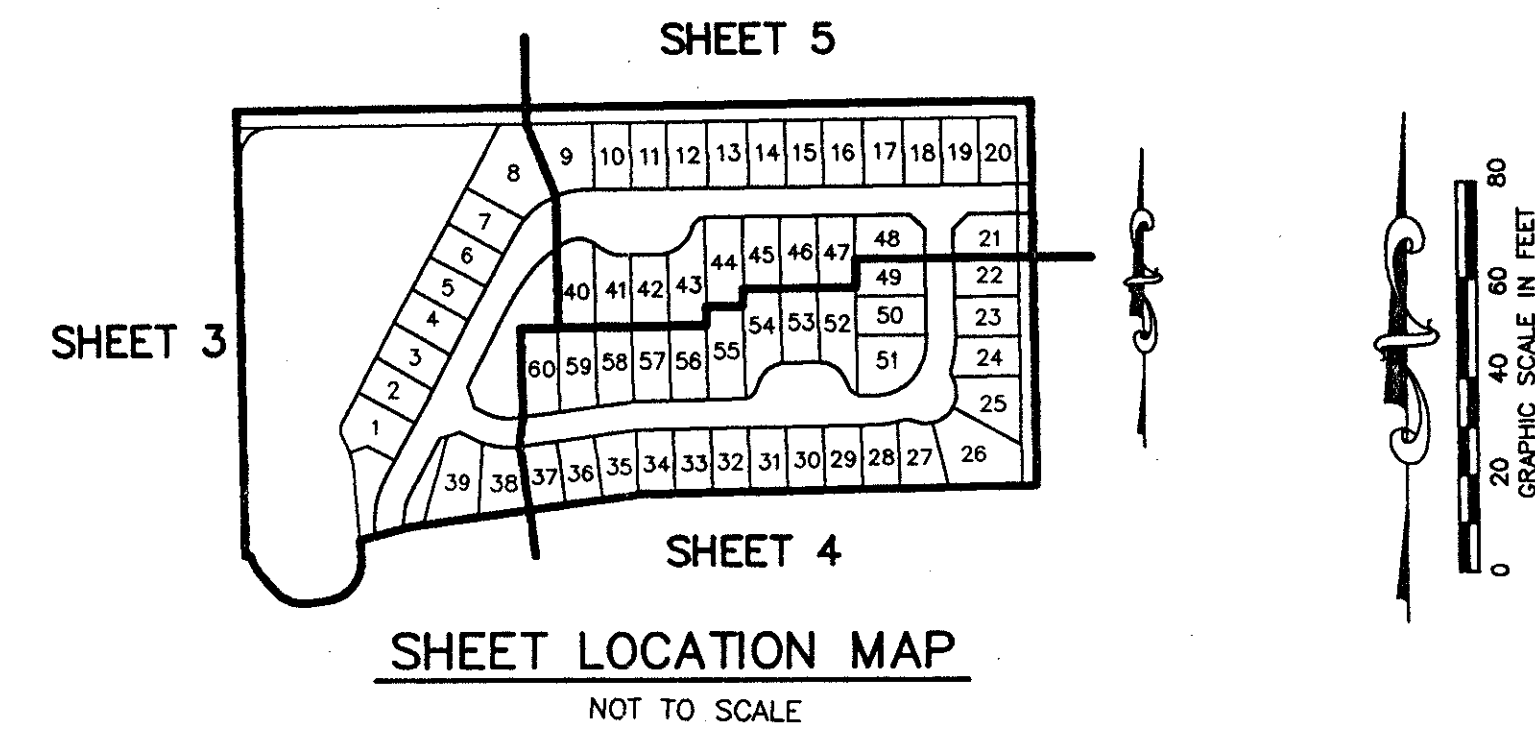


WINSTON TRAILS PARCEL FOURTEEN

PART OF WINSTON TRAILS P.U.D.
SITUATE IN SECTION 2, TOWNSHIP 45 SOUTH, RANGE 42 EAST
PALM BEACH COUNTY, FLORIDA
APRIL, 1998 SHEET 5 OF 5



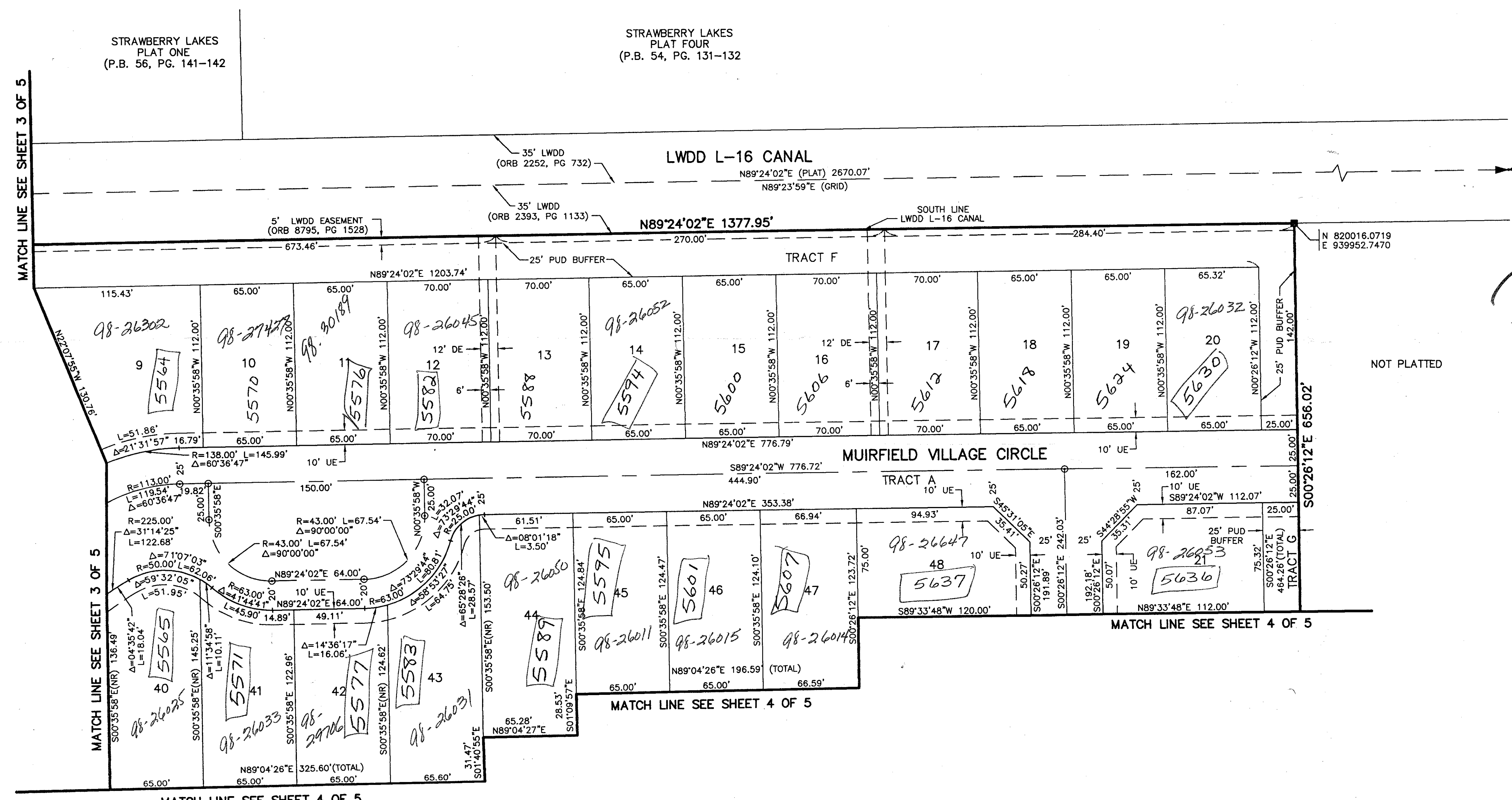
194

STATE OF FLORIDA
COUNTY OF PALM BEACH

THIS PLAT WAS FILED FOR
RECORD _____ DAY OF _____
AD, 1998 AND DULY RECORDED
IN PLAT BOOK _____ ON PAGES
_____ AND _____

DOROTHY H. WILKEN, CLERK
BY: _____, D.C.

CIRCUIT COURT SEAL



*Pet. 87-112F
AUC. #0001
5/2/21*

- LEGEND**
- A ARC LENGTH
 - AME ACCESS AND MAINTENANCE EASEMENT
 - BE BUFFER EASEMENT
 - Δ CENTRAL (DELTA) ANGLE
 - DE DRAINAGE EASEMENT
 - FPL FLORIDA POWER & LIGHT
 - LAE LIMITED ACCESS EASEMENT
 - LME LAKE MAINTENANCE EASEMENT
 - LMAE LAKE MAINTENANCE ACCESS EASEMENT
 - POB POINT OF BEGINNING
 - POC POINT OF COMMENCEMENT
 - PUD PLANNED UNIT OF DEVELOPMENT
 - (NR) NON-RADIAL
 - ORB OFFICIAL RECORD BOOK
 - PB PLAT BOOK
 - PG(S) PAGE(S)
 - R RADIUS
 - (TYP) TYPICAL
 - UE UTILITY EASEMENT
 - PERMANENT REFERENCE MONUMENT
FOUND PLS# 4763
 - PERMANENT REFERENCE MONUMENT
SET PLS# 4763
 - PERMANENT CONTROL POINT
SET PLS# 4763
 - ⊖ CENTERLINE

SUBDIVISION # Winston Trails
 BOOK # 194
 FLOOD ZONE # 175B
 QUAD # 34
 SE 07-112
 PUD NAME Winston Trails
 TAZ 437

WINTRP29.dwg 5-2-98 7:57:37 am EST
REV: 04-22-98
CAD FILE: MUSSWINT/WINTRP29

0587-023

THIS INSTRUMENT WAS PREPARED BY MARY HANNA CLODFELTER, P.S.M. IN THE OFFICES OF MOCK, ROOS & ASSOCIATES, INC., 5720 CORPORATE WAY, WEST PALM BEACH, FLORIDA 33407.

SCALE:
1"=40'
P.A. NO.:
95200.02
DATE:
DECEMBER 1997
DRAWING NO.
45-42-02-99

MOCK • ROOS
ENGINEERS • SURVEYORS • PLANNERS
5720 Corporate Way, West Palm Beach, Florida 33407
(561) 663-3113, fax 478-7248

**WINSTON TRAILS
PARCEL FOURTEEN**
PART OF WINSTON TRAILS P.U.D.
SITUATE IN SECTION 2, TOWNSHIP 45 SOUTH,
RANGE 42 EAST
PALM BEACH COUNTY, FLORIDA

82/194