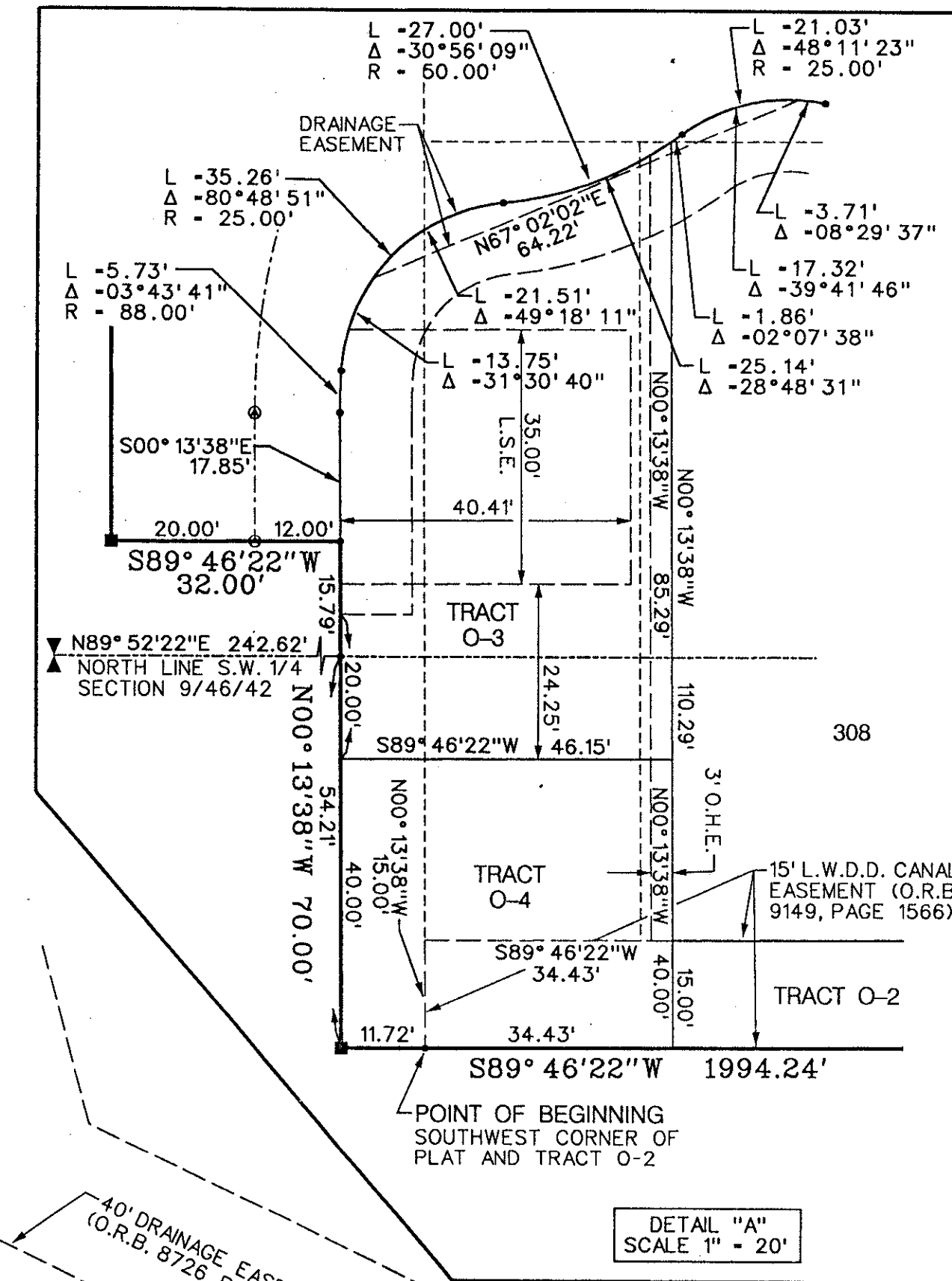
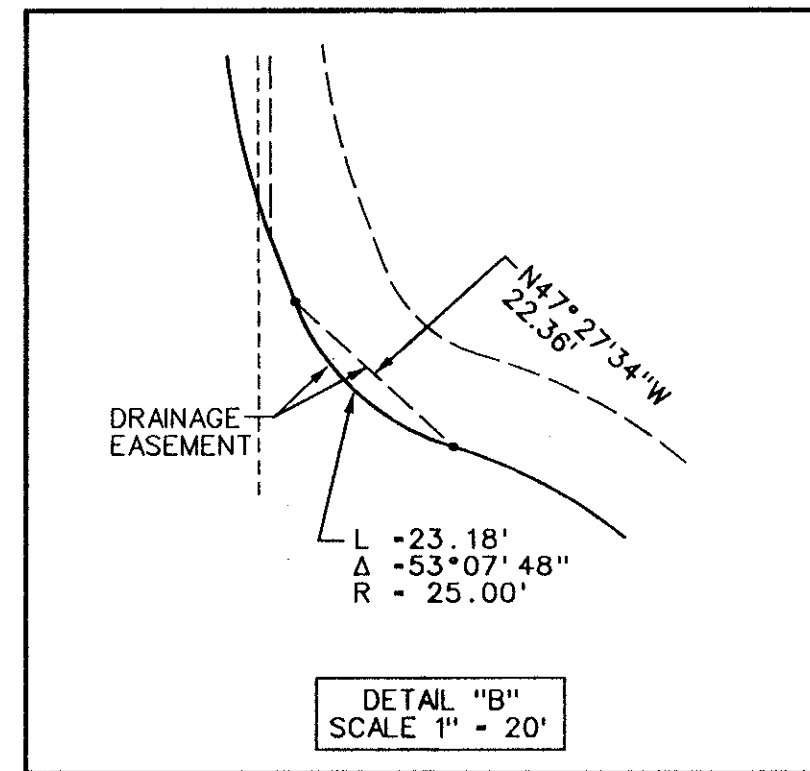
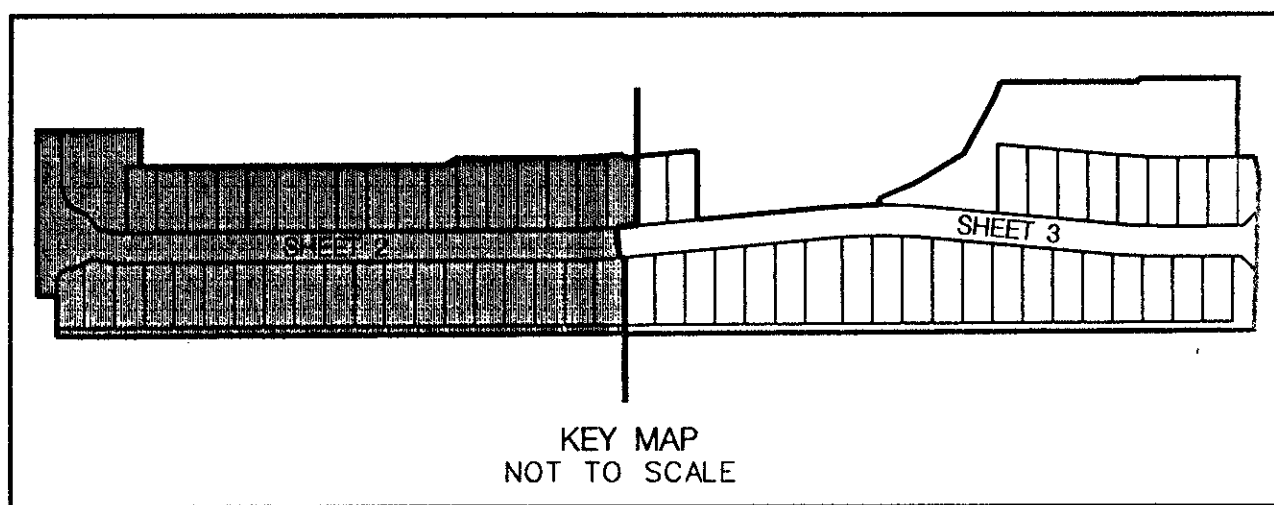


POLO TRACE II PLAT NO. 3

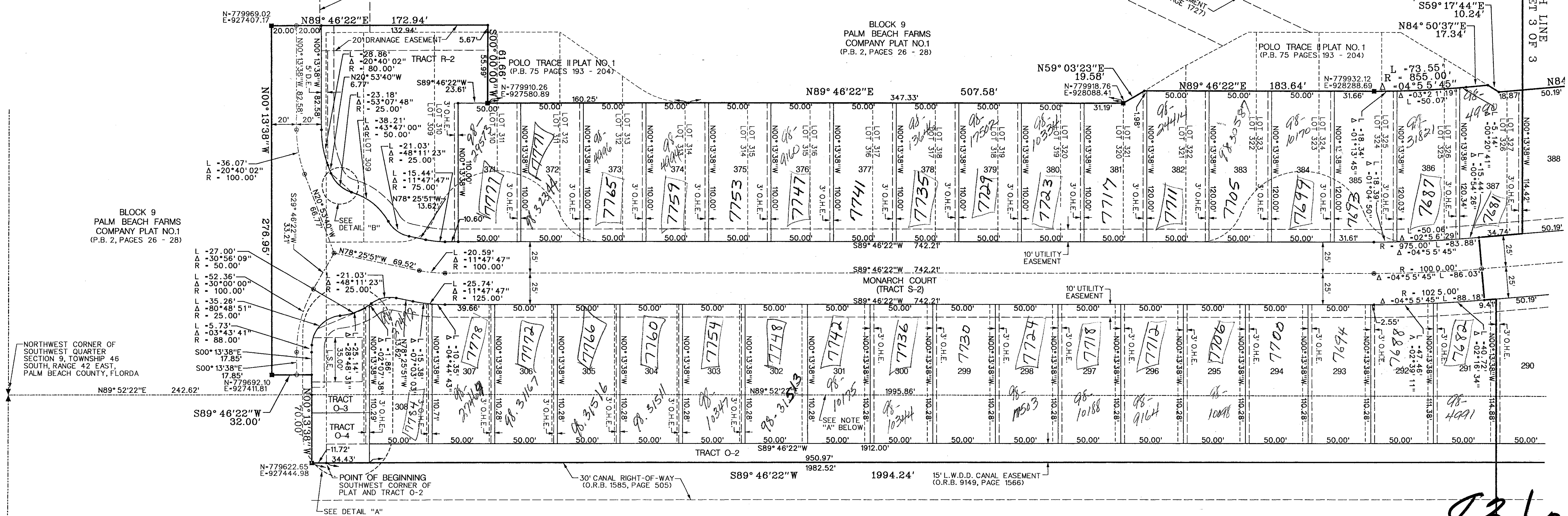
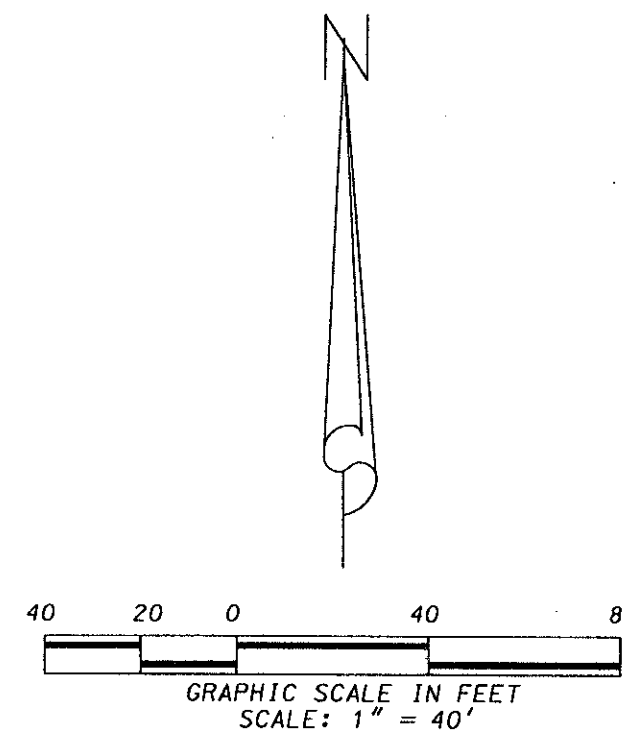
(A PART OF POLO TRACE II P.U.D.)

BEING A REPLAT OF A PORTION OF TRACTS 49 & 50, BLOCK 9,
 PALM BEACH FARMS COMPANY PLAT NO. 1, P.B. 2, PAGES 26 - 28
 AND A PORTION OF THE PLAT OF POLO TRACE II PLAT NO. 1, P.B. 75, PAGES 193 - 204,
 LYING IN SECTION 9, TOWNSHIP 46 SOUTH, RANGE 42 EAST, PALM BEACH COUNTY, FLORIDA
 MAY, 1998 SHEET 2 OF 3

0633-003



*RET. 93-57A
 CURRENT
 5/3/3/K*



BLOCK 9
 PALM BEACH FARMS
 COMPANY PLAT NO.1
 (P.B. 2, PAGES 26 - 28)

BLOCK 9
 PALM BEACH FARMS
 COMPANY PLAT NO.1
 (P.B. 2, PAGES 26 - 28)

POLO TRACE II PLAT NO. 1
 (P.B. 75 PAGES 193 - 204)

MONARCH COURT
 (TRACT S-2)

BLOCK 9
 PALM BEACH FARMS
 COMPANY PLAT NO.1
 (P.B. 2, PAGES 26 - 28)

MATCH LINE
 SEE SHEET 3 OF 3

NOTE "A"
 NORTH LINE S.W. 1/4
 SECTION 9/46/42

83/2

0633-003

LIDBERG LAND SURVEYING INC.
 LB4431

675 West Indiantown Road, Suite 200,
 Jupiter, Florida 33458 TEL. 561-746-8454

FLD.	JP.	JOB	97-032(306)	FB.	270	PG.	71
OFF.	RW.	DATE	09/10/97	DWG.	D97-032B		
CKD.	DCL.	REF.	97032306(m)	SHEET	2 OF 3		

*BOOK 88
 FLOOD ZONE B
 CHAD # 01
 93-57
 ZIP CODE 33446
 POLO TRACE II P.U.D.*