

KEY MAP
NOT TO SCALE

JONES - PARCEL "D-3"

0683-008

7

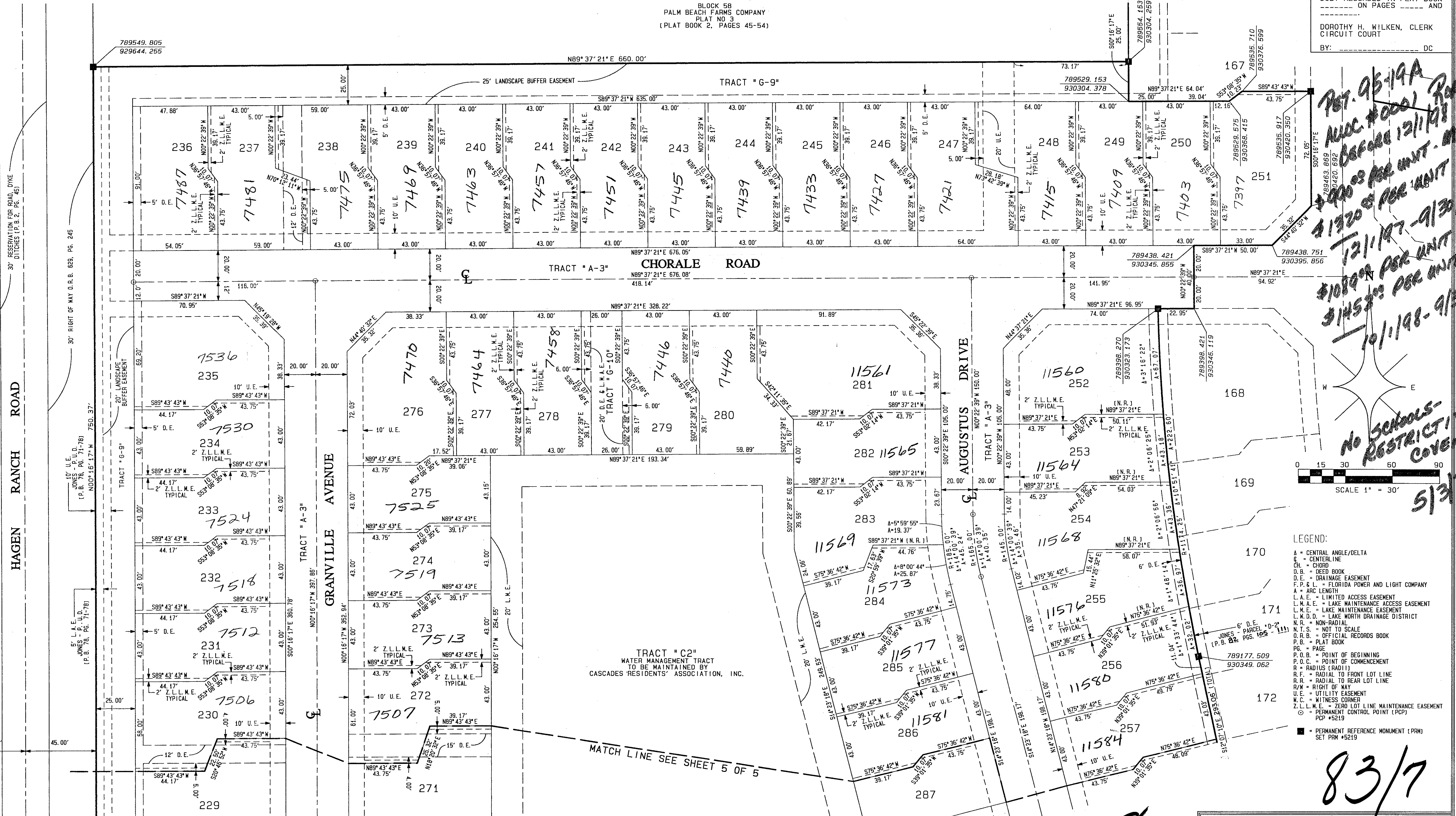
A PORTION OF JONES P.U.D., BEING A REPLAT OF TRACT "F-2", JONES - PARCEL "D-2" AS RECORDED IN PLAT BOOK 82, PAGES 103 THROUGH 111 OF THE PUBLIC RECORDS OF PALM BEACH COUNTY, FLORIDA, SITUATE IN SECTION 33, TOWNSHIP 45 SOUTH, RANGE 42 EAST, PALM BEACH COUNTY, FLORIDA

SHEET 4 OF 5

APRIL 1998

BLOCK 58
PALM BEACH FARMS COMPANY
PLAT NO. 3
(PLAT BOOK 2, PAGES 45-54)

STATE OF FLORIDA } SS
COUNTY OF PALM BEACH }
THIS PLAT WAS FILED FOR
RECORD AT _____ DAY OF
THIS _____ AD, 1998 AND
DULY RECORDED IN PLAT BOOK
_____ ON PAGES _____ AND
DOROTHY H. WILKEN, CLERK
CIRCUIT COURT
BY: _____ DC



*787.95-19A
AUG. #0001 ROADS
BEFORE 12/1/98
\$1000 PER UNIT - MF RES.
\$1920 PER UNIT SFD
12/1/97-9/30/98
\$1089 PER UNIT MF RES.
\$145 PER UNIT SFD
10/1/98-9/30/99*

*No SCHOOLS-
RESTRICTIVE
COVENANT*

SCALE 1" = 30'

5/3/3/K

LEGEND:
A = CENTRAL ANGLE/DELTA
C = CENTERLINE
CH = CHORD
D.B. = DEED BOOK
D.E. = DRAINAGE EASEMENT
F.P.C.L. = FLORIDA POWER AND LIGHT COMPANY
L = ARC LENGTH
L.A.E. = LIMITED ACCESS EASEMENT
L.M.A.E. = LAKE MAINTENANCE ACCESS EASEMENT
L.M.E. = LAKE MAINTENANCE EASEMENT
L.M.D.D. = LAKE NORTH DRAINAGE DISTRICT
N.R. = NON-RADIAL
N.T.S. = NOT TO SCALE
O.R.B. = OFFICIAL RECORDS BOOK
P.B. = PLAT BOOK
Pg. = PAGE
P.O.B. = POINT OF BEGINNING
P.O.C. = POINT OF COMMENCEMENT
R = RADIUS (RADII)
R.F. = RADIAL TO FRONT LOT LINE
R.R. = RADIAL TO REAR LOT LINE
R.W. = RIGHT OF WAY
U.E. = UTILITY EASEMENT
W.C. = WITNESS CORNER
Z.L.L.M.E. = ZERO LOT LINE MAINTENANCE EASEMENT
Z.P.C.P. = PERMANENT CONTROL POINT (PCP)
PCP #5219
■ = PERMANENT REFERENCE MONUMENT (PRM)
SET PRM #5219

83/7

0683-008

PAGE 7
FLOOD MAP #0011
ZONING POD
QUAD # 80
SE 95-19
ZIP CODE 33407
PUD NAME Amickst POD

ATLANTIC - CARIBBEAN MAPPING, INC.
3062 JOG ROAD - GREENACRES, FLORIDA 33467
(561) 964-7884; FAX (561) 964-1969

PROFESSIONAL
SURVEYORS
AND MAPPERS