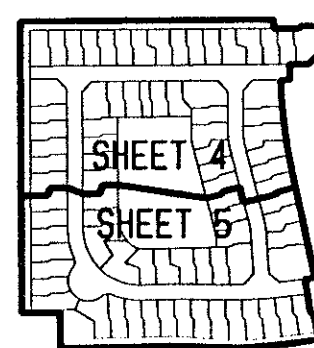


JONES - PARCEL "D-3"

0683-008

8

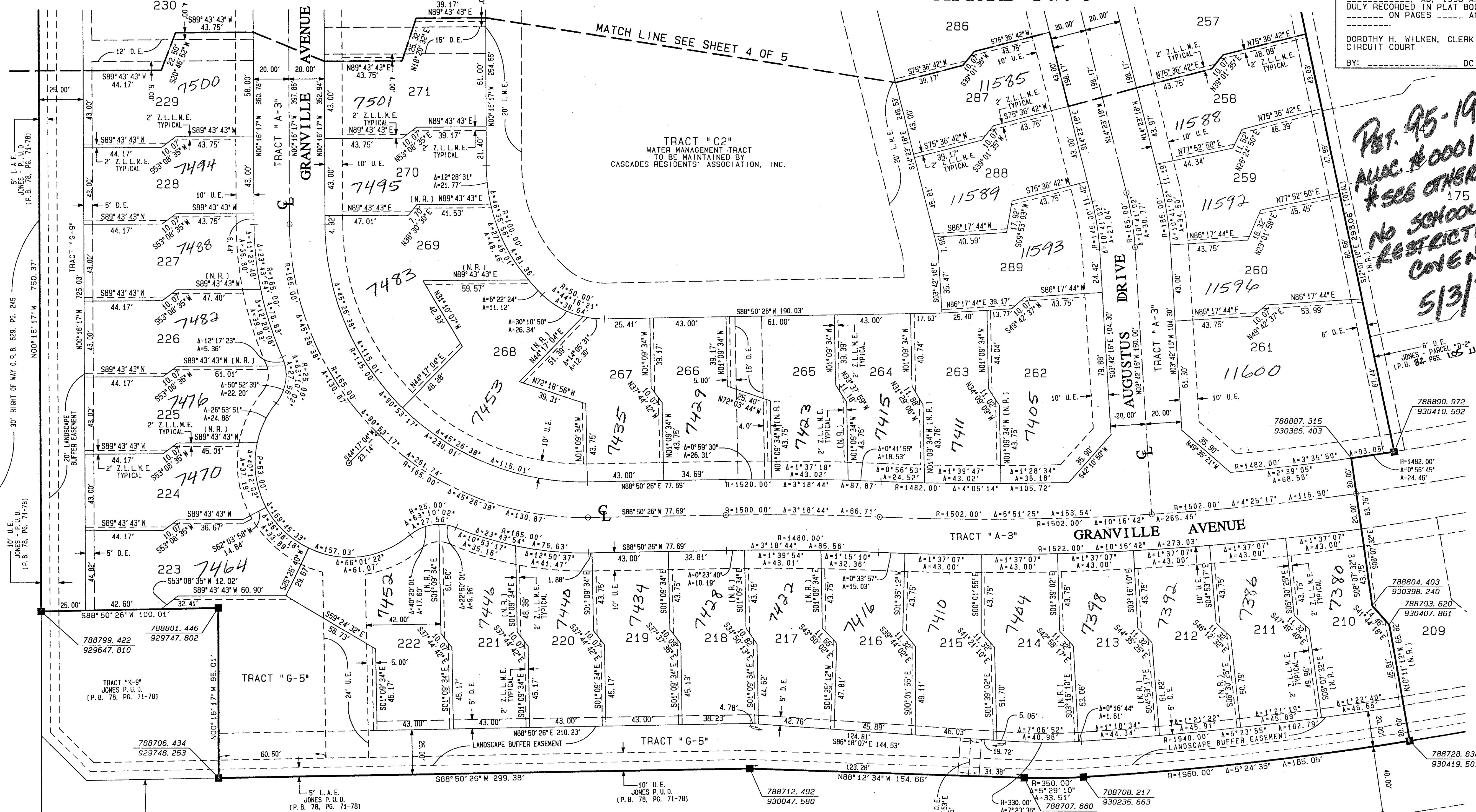
A PORTION OF JONES P.U.D., BEING A REPLAT OF TRACT "F-2", JONES - PARCEL "D-2" AS RECORDED IN PLAT BOOK 82, PAGES 105 THROUGH 111 OF THE PUBLIC RECORDS OF PALM BEACH COUNTY, FLORIDA, SITUATE IN SECTION 33, TOWNSHIP 45 SOUTH, RANGE 42 EAST, PALM BEACH COUNTY, FLORIDA



KEY MAP NOT TO SCALE

SHEET 5 OF 5

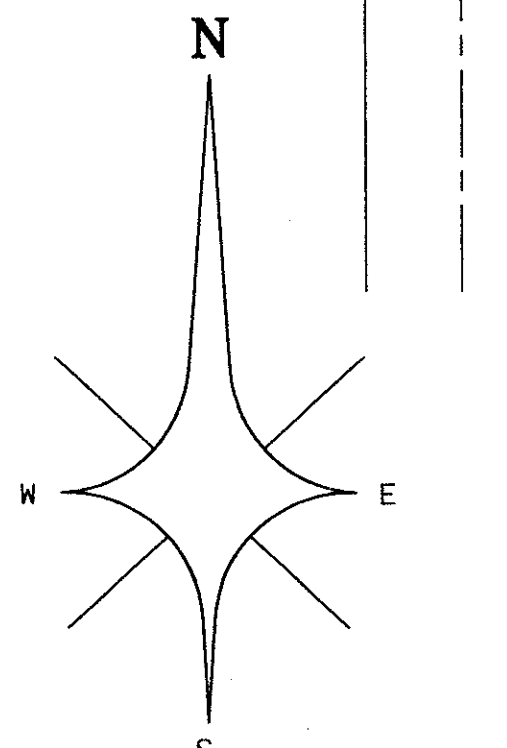
APRIL 1998



STATE OF FLORIDA } SS
 COUNTY OF PALM BEACH }
 THIS PLAT WAS FILED FOR
 RECORD AT _____ DAY OF
 THIS _____ AD, 1998 AND
 DULY RECORDED IN PLAT BOOK
 _____ ON PAGES _____ AND

 DOROTHY H. WILKEN, CLERK
 CIRCUIT COURT
 BY: _____ DC

*Part 95-19A
 AUC. #0001-ROADS
 #SEE OTHER SHEETS
 175
 NO SCHOOLS-
 RESTRICTIVE
 COVENANT
 5/3/3K*



- LEGEND:
- A = CENTRAL ANGLE/DELTA
 - C = CENTERLINE
 - CH = CHORD
 - D.B. = DEED BOOK
 - D.E. = DRAINAGE EASEMENT
 - F.P. & L. = FLORIDA POWER AND LIGHT COMPANY
 - A = ARC LENGTH
 - L.A.E. = LIMITED ACCESS EASEMENT
 - L.M.A.E. = LAKE MAINTENANCE ACCESS EASEMENT
 - L.M.E. = LAKE MAINTENANCE EASEMENT
 - L.W.D. = LAKE WORTH DRAINAGE DISTRICT
 - N.R. = NON-RADIAL
 - N.T.S. = NOT TO SCALE
 - O.R.B. = OFFICIAL RECORDS BOOK
 - P.B. = PLAT BOOK
 - P.C. = PAGE
 - P.O.B. = POINT OF BEGINNING
 - P.O.C. = POINT OF COMMENCEMENT
 - R = RADIUS (TRADITIONAL)
 - R.F. = RADIAL TO FRONT LOT LINE
 - R.R. = RADIAL TO REAR LOT LINE
 - R/W = RIGHT OF WAY
 - U.E. = UTILITY EASEMENT
 - W.C. = WITNESS CORNER
 - Z.L.L.M.E. = ZERO LOT LINE MAINTENANCE EASEMENT
 - ⊙ = PERMANENT CONTROL POINT (PCP)
 PCP #5219
 - = PERMANENT REFERENCE MONUMENT (PRM)
 SET PRM #5219

SUBDIVISION * Jones Parcel D3
 BOOK 83 PAGE 8
 FLOOD ZONE 1A FLOOD MAP #2004
 QUAD # 5D ZONING PDC
 SE 95-19 ZIP CODE 33407
 P.U.D. Amherst PUD

0683-008

83/8

PROFESSIONAL SURVEYORS AND MAPPERS
ATLANTIC - CARIBBEAN MAPPING, INC.
 3062 JOG ROAD - GREENACRES, FLORIDA 33467
 (561) 964-7884; FAX (561) 964-1969