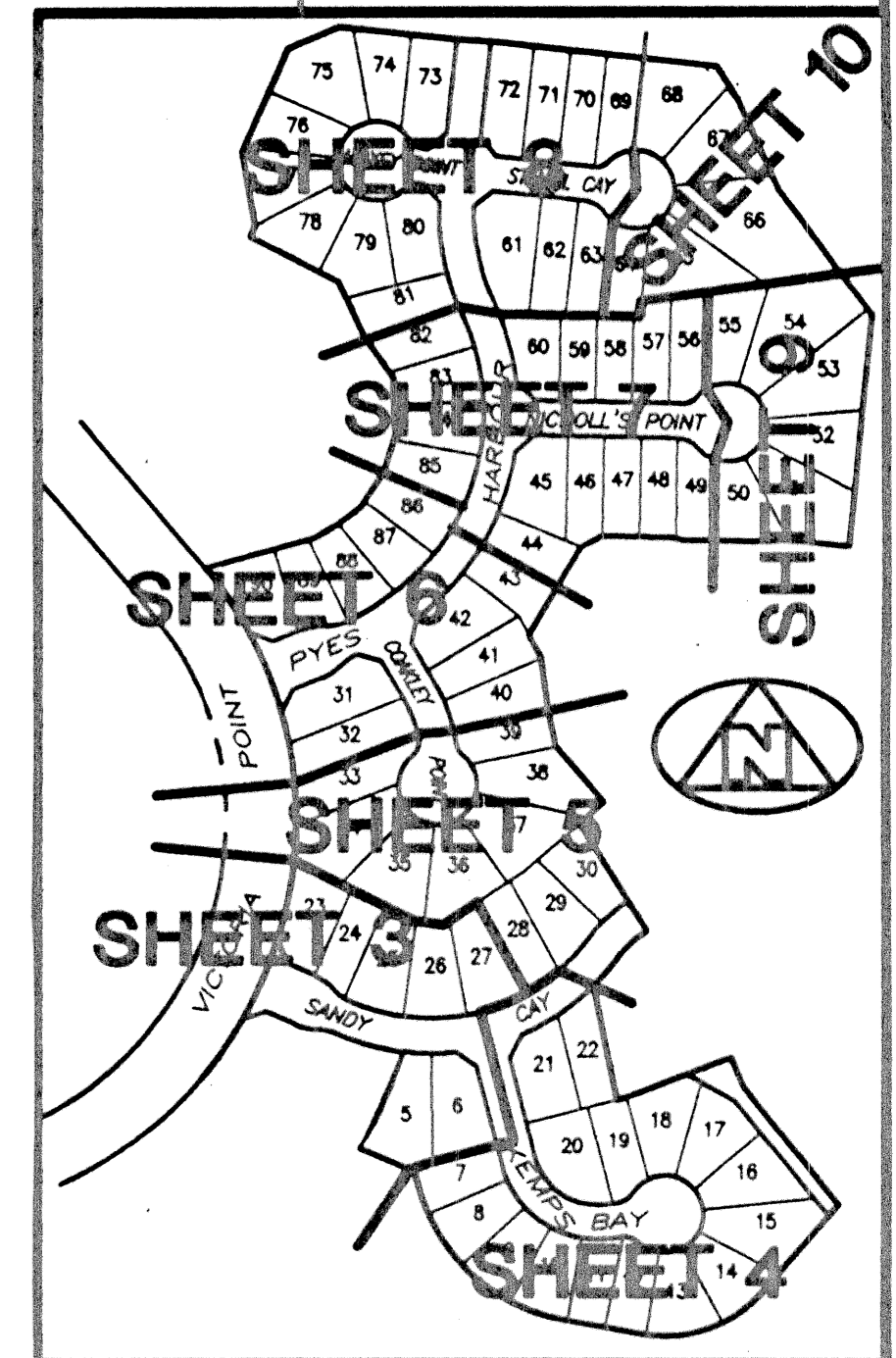
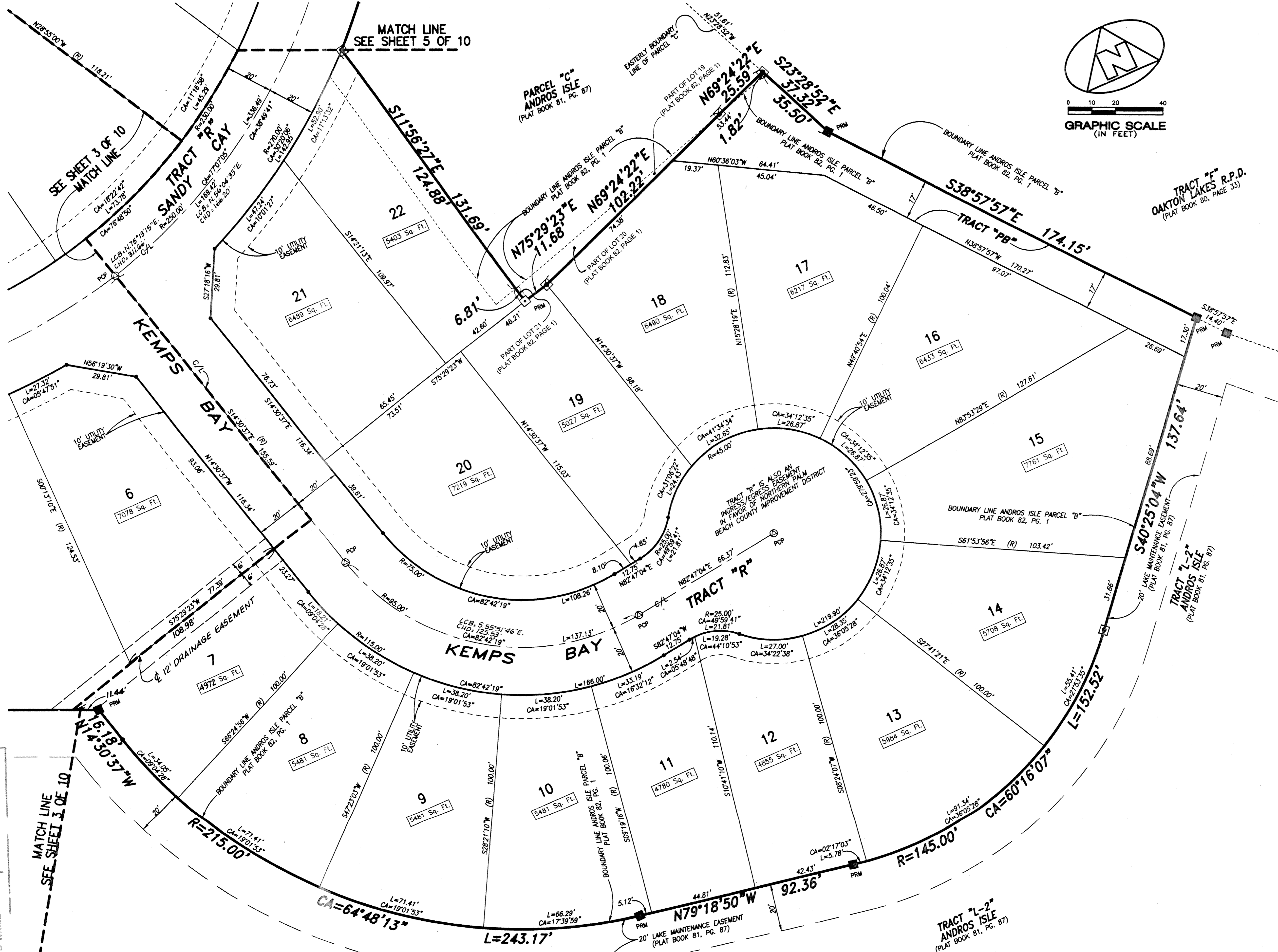


JULY 1998 ANDROS ISLE RE-PLAT OF PARCEL "B" SHEET 4 of 10

14

(A PART OF A RESIDENTIAL PLANNED DEVELOPMENT)

BEING A REPLAT OF A PART OF ANDROS ISLE PARCEL "B", RECORDED IN PLAT BOOK 82, PAGE 1, AND BEING A REPLAT OF A PART OF PARCEL "C", ANDROS ISLE, AS RECORDED IN PLAT BOOK 81, PAGE 87, AND LYING IN SECTION 20, TOWNSHIP 43 SOUTH, RANGE 42 EAST, CITY OF WEST PALM BEACH, PALM BEACH COUNTY, FLORIDA



KEY MAP
NOT TO SCALE

EASEMENT NOTE:
THE LANDSCAPE AND UTILITY EASEMENTS LYING WITHIN THE PROPERTY BEING PLATTED, AS SHOWN HEREON, ARE AS PER THE PLAT OF ANDROS ISLE PARCEL "B" AS RECORDED IN PLAT BOOK 82, PAGE 1, UNLESS OTHERWISE NOTED.

CURVE DATA LEGEND:

- R = RADIUS
- L = ARC LENGTH
- CA = CENTRAL ANGLE
- LCB = LONG CHORD BEARING
- CHD = CHORD

SURVEYOR'S NOTES AND LEGEND:

1. THE BASE BEARING AS SHOWN HEREON IS N66°13'12"W ALONG THE SOUTHERLY BOUNDARY OF PARCEL "B" AS SHOWN ON THE PLAT OF ANDROS ISLE PARCEL "B", RECORDED IN PLAT BOOK 82, PAGE 1, PALM BEACH COUNTY, FLORIDA.
2. IN THOSE INSTANCES WHERE UTILITY/DRAINAGE STRUCTURES ARE CONSTRUCTED IN CONFLICT WITH THE PLATTED PERMANENT CONTROL POINTS (P.C.P.) POSITION, STRADDLERS MONUMENTED AS PERMANENT CONTROL POINTS WILL BE SET TO REFERENCE THE PLATTED P.C.P. POSITION.
3. LINES WHICH INTERSECT CURVES ARE NOT RADIAL, UNLESS OTHERWISE NOTED.
4. (R) DENOTES RADIAL LINE.
5. C/L DENOTES A CENTERLINE.
6. [Symbol] DENOTES A SET #2424 PERMANENT REFERENCE MONUMENT (P.R.M.).
7. [Symbol] DENOTES A SET #2424 PERMANENT CONTROL POINT (P.C.P.).
8. [Symbol] DENOTES A FOUND #2424 PERMANENT REFERENCE MONUMENT (P.R.M.).
9. [Symbol] DENOTES A FOUND #2424 PERMANENT CONTROL POINT (P.C.P.).

THIS INSTRUMENT WAS PREPARED BY WM. R. VAN CAMPEN, R.L.S., IN AND FOR THE OFFICES OF BENCH MARK LAND SURVEYING & MAPPING, INC., 4152 WEST BLUE HERON BOULEVARD, SUITE 121, RIVIERA BEACH, FLORIDA

BENCH MARK
Land Surveying and Mapping, Inc.
4152 West Blue Heron Blvd., Suite 121, Riviera Beach, FL 33404
Fax (561) 844-9659 Phone (407) 848-2102

RECORD PLAT
ANDROS ISLE RE-PLAT OF PARCEL "B"

DWN	D.J.M.	FB	DATE	4-1-98	WO.#	P300B
CKD	FILE	BB-A.dwg	SCALE	1" = 20'	SHEET	4 OF 10

SUBDIVISION # 14 at Parcel B
 BOOK 83
 FLOOD ZONE
 GUAD #
 SE
 ZIP CODE
 City of West Palm Beach

TAZ 1043