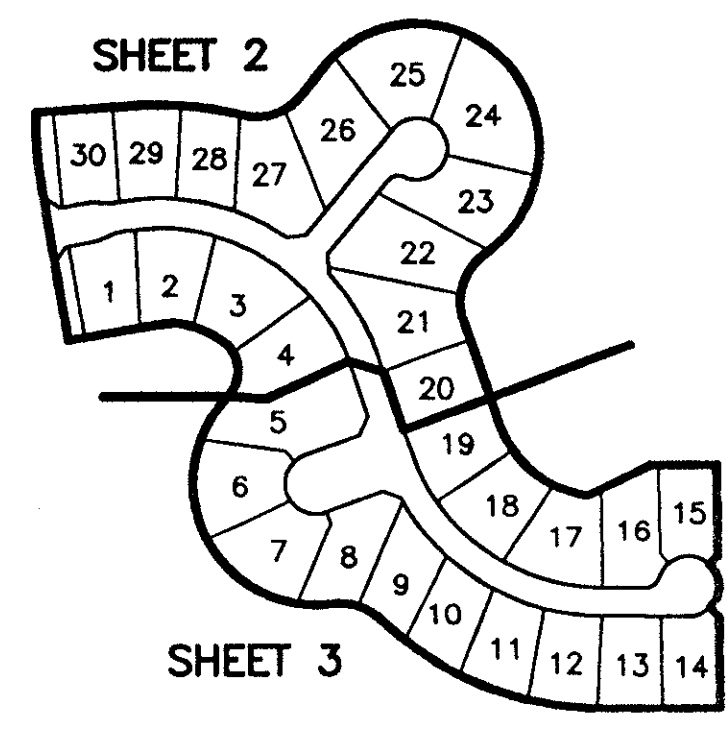


# ADDISON RESERVE PARCEL EIGHTEEN

PART OF GLENEAGLES/POLO CLUB WEST P.U.D.  
BEING A REPLAT OF TRACT 18  
"ADDISON RESERVE PLAT FOUR"  
(P.B. 79, PGS. 76-81)

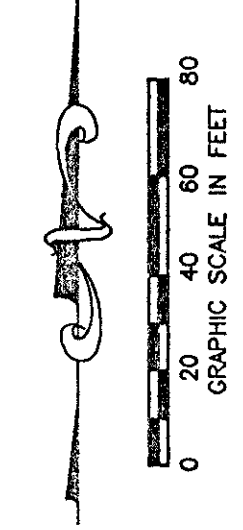
SITUATE IN SECTION 28, TOWNSHIP 46 SOUTH, RANGE 42 EAST  
PALM BEACH COUNTY, FLORIDA  
MARCH, 1998 SHEET 3 OF 3



SHEET LOCATION MAP  
NOT TO SCALE

# 23

STATE OF FLORIDA  
COUNTY OF PALM BEACH  
THIS PLAT WAS FILED FOR  
RECORD \_\_\_\_\_ DAY OF \_\_\_\_\_  
AD, 1998 AND DULY RECORDED  
IN PLAT BOOK \_\_\_\_\_ ON PAGES  
\_\_\_\_\_ AND \_\_\_\_\_  
DOROTHY H. WILKEN, CLERK  
BY: \_\_\_\_\_, D.C.

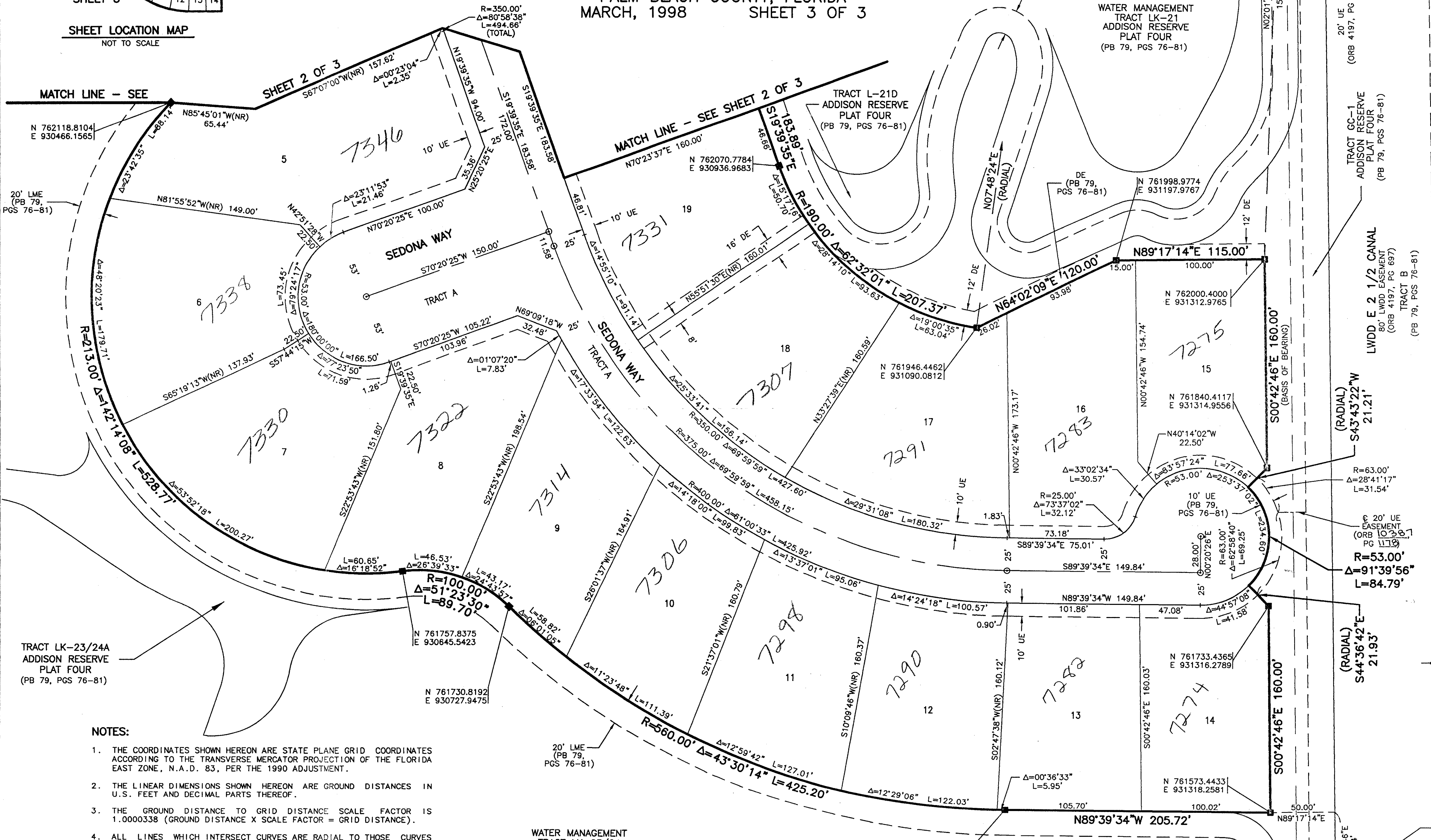


CIRCUIT COURT SEAL

### LEGEND

- BE BUFFER EASEMENT
- Δ CENTRAL (DELTA) ANGLE
- DE DRAINAGE EASEMENT
- FPL FLORIDA POWER & LIGHT
- L ARC LENGTH
- LAE LIMITED ACCESS EASEMENT
- LE LANDSCAPE EASEMENT
- LME LAKE MAINTENANCE EASEMENT
- LMAE LAKE MAINTENANCE ACCESS EASEMENT
- LWDD LAKE WORTH DRAINAGE DISTRICT
- (NR) NON-RADIAL
- ORB OFFICIAL RECORD BOOK
- PS PLAT BOOK
- PG(S) PAGE(S)
- PUD PLANNED UNIT DEVELOPMENT
- R RADIUS
- UE UTILITY EASEMENT
- PERM PERMANENT REFERENCE MONUMENT FOUND PLS# 4763
- PERM PERMANENT REFERENCE MONUMENT SET PLS# 4763
- PCP PERMANENT CONTROL POINT SET PLS# 4763
- CL CENTERLINE

*Pet. 80-215J  
AUC. #0001 (all used up)  
5/3/3/K*



### NOTES:

1. THE COORDINATES SHOWN HEREON ARE STATE PLANE GRID COORDINATES ACCORDING TO THE TRANSVERSE MERCATOR PROJECTION OF THE FLORIDA EAST ZONE, N.A.D. 83, PER THE 1990 ADJUSTMENT.
2. THE LINEAR DIMENSIONS SHOWN HEREON ARE GROUND DISTANCES IN U.S. FEET AND DECIMAL PARTS THEREOF.
3. THE GROUND DISTANCE TO GRID DISTANCE SCALE FACTOR IS 1.0000338 (GROUND DISTANCE X SCALE FACTOR = GRID DISTANCE).
4. ALL LINES WHICH INTERSECT CURVES ARE RADIAL TO THOSE CURVES UNLESS OTHERWISE NOTED.

Palm Beach County Control Point "GAITO" Brass Disc in Concrete N 763501.63131 E 926321.8927	S89°18'37"W (GRID) 3045.57'	Palm Beach County Control Point "GAST" Brass Disc in Concrete N 763538.3000 E 931367.3500
---	--------------------------------	---

S00°42'46"E (Plat) 00°00'15" Bearing  
S00°42'31"E (Grid) = Clockwise Rotation (Plat to Grid)

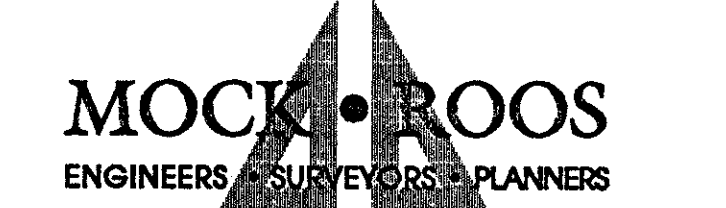
EAST LINE  
PARCEL 18,  
ADDISON RESERVE PLAT FOUR  
PB 79, PGS 76-81

REV. 05-14-98  
CAD FILE:  
WKCADD\ADDORP39

# 0239-029

THIS INSTRUMENT WAS PREPARED BY MARY HANNA CLODFELTER, P.S.M. IN THE OFFICES OF MOCK, ROOS & ASSOCIATES, INC., 5720 CORPORATE WAY, WEST PALM BEACH, FLORIDA 33407.

SCALE: 1" = 40'
P.A. NO.: 94182.15
DATE: MARCH, 1998
DRAWING NO.: 46-42-28-154



ADDISON RESERVE  
PARCEL EIGHTEEN  
PART OF GLENEAGLES/POLO CLUB WEST P.U.D.  
BEING A REPLAT OF TRACT 18  
"ADDISON RESERVE PLAT FOUR"  
(P.B. 79, PGS. 76-81)

SITUATE IN SECTION 28, TOWNSHIP 46 SOUTH, RANGE 42 EAST  
PALM BEACH COUNTY, FLORIDA

SHEET 3 OF 3