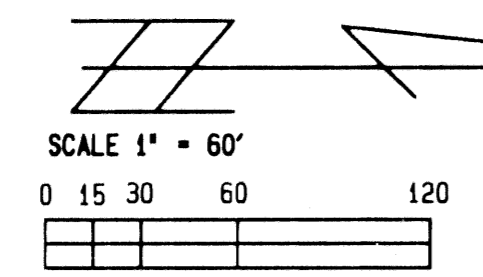
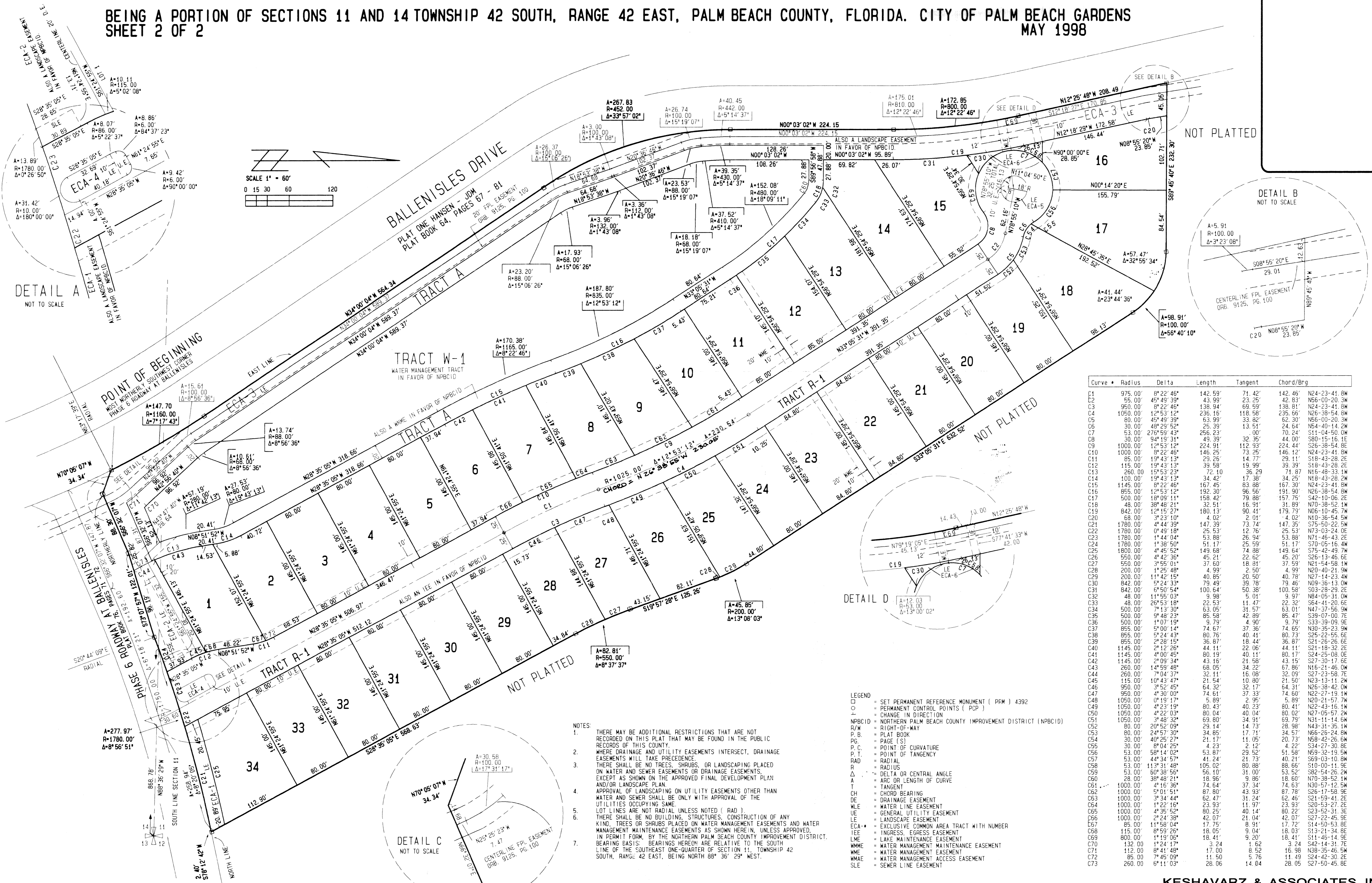
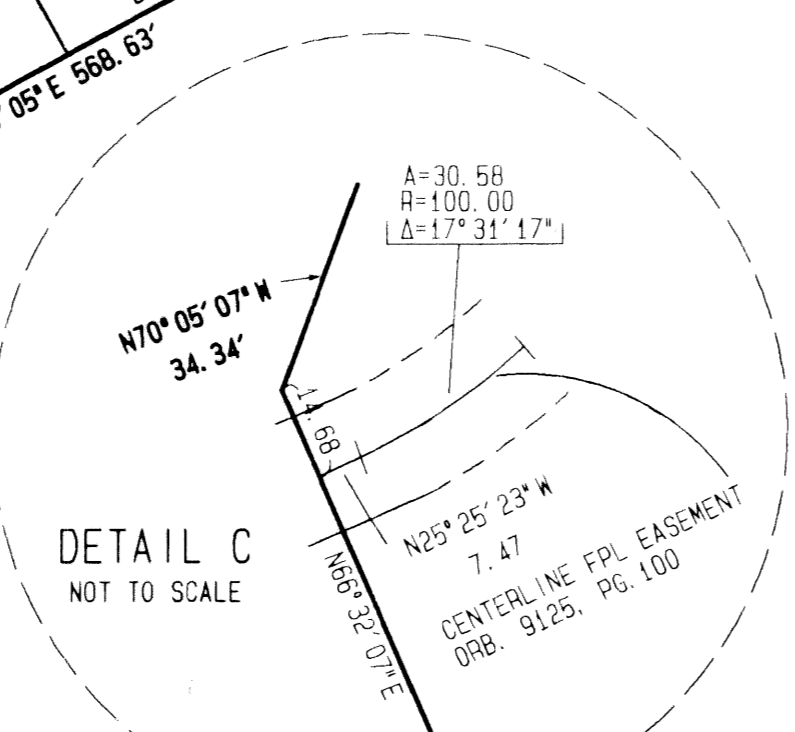
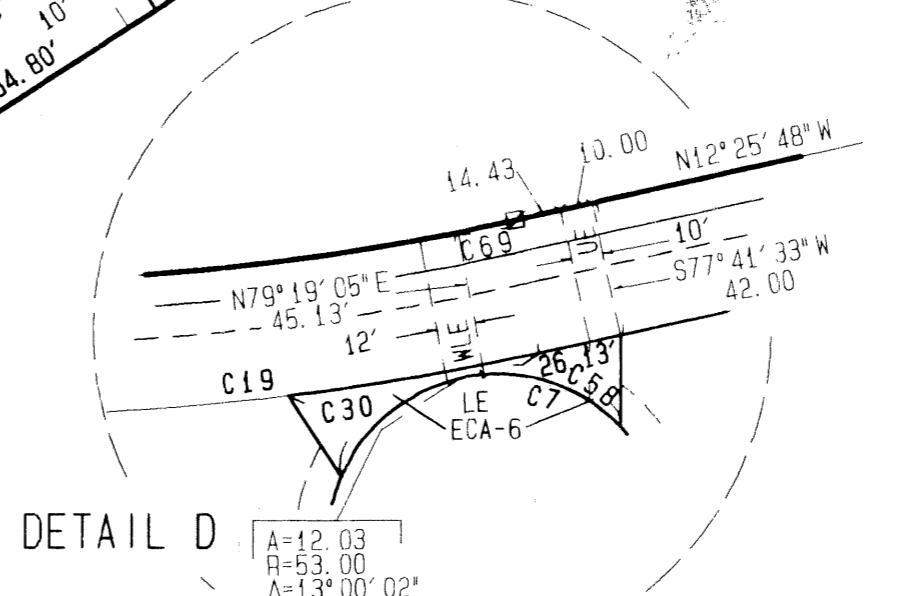
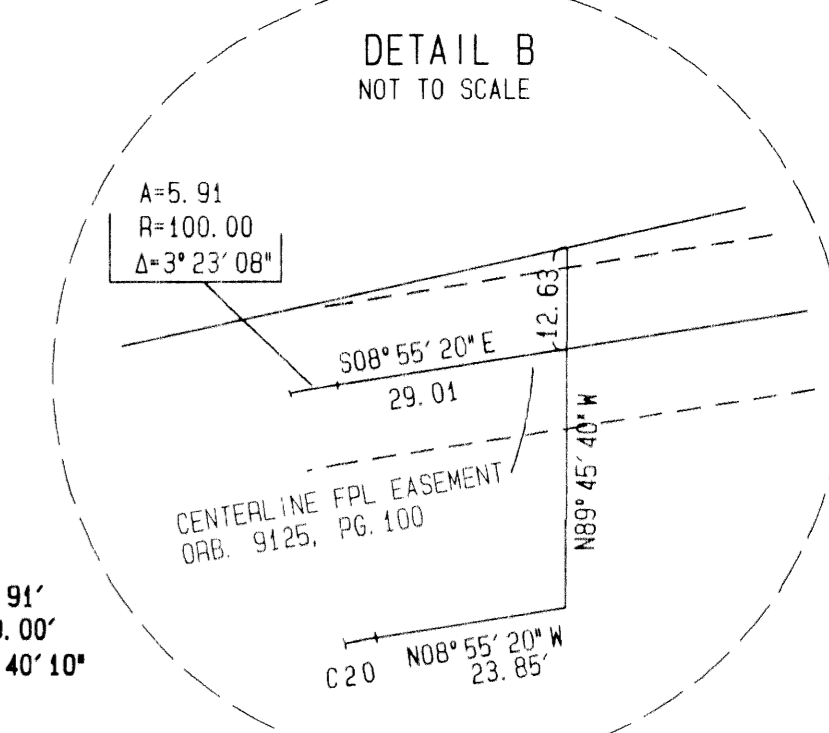


# BALLENISLES POD 7

BEING A PORTION OF SECTIONS 11 AND 14 TOWNSHIP 42 SOUTH, RANGE 42 EAST, PALM BEACH COUNTY, FLORIDA. CITY OF PALM BEACH GARDENS  
SHEET 2 OF 2  
MAY 1998



DETAIL A  
NOT TO SCALE



Curve	Radius	Delta	Length	Tangent	Chord/Brg
C1	975.00'	8°22'46"	142.59'	71.42'	142.46' N24-23-41.8W
C2	55.00'	45°49'39"	43.99'	23.25'	42.83' N56-00-20.3W
C3	950.00'	8°22'46"	138.94'	69.59'	138.81' N24-23-41.8W
C4	1050.00'	1°53'12"	236.16'	118.58'	235.56' N26-38-54.6W
C5	80.00'	45°49'39"	63.99'	33.82'	62.30' N56-00-20.3W
C6	30.00'	40°29'52"	25.39'	13.51'	24.64' N54-40-14.2W
C7	53.00'	27°59'43"	25.63'	13.00'	70.24' S11-04-50.0W
C8	30.00'	94°19'31"	49.39'	32.35'	44.00' S80-15-16.1E
C9	1000.00'	1°53'12"	224.91'	112.93'	224.44' S26-38-54.6E
C10	1000.00'	1°53'12"	146.12'	73.25'	146.12' N24-23-41.8W
C11	85.00'	19°43'13"	29.26'	14.77'	29.11' S18-43-28.2E
C12	115.00'	19°43'13"	39.58'	19.99'	39.39' S18-43-28.2E
C13	260.00'	15°53'23"	72.10'	36.29'	71.87' N16-48-33.1W
C14	100.00'	19°43'13"	34.42'	17.38'	34.25' N18-43-28.2W
C15	1145.00'	8°22'46"	167.45'	83.88'	167.30' N24-23-41.8W
C16	855.00'	12°53'12"	192.30'	96.56'	191.90' N26-38-54.6W
C17	500.00'	18°09'11"	158.42'	79.88'	157.75' S42-10-06.2E
C18	48.00'	38°48'21"	32.51'	16.91'	31.89' N70-38-52.1W
C19	842.00'	1°53'12"	180.13'	90.41'	179.79' N06-10-45.7W
C20	1000.00'	1°53'12"	4.02'	2.01'	4.02' N19-36-54.5W
C21	1780.00'	4°44'39"	147.39'	73.74'	147.35' S75-50-22.5W
C22	1780.00'	4°44'39"	25.53'	12.76'	25.53' N73-03-24.0E
C23	1780.00'	1°44'04"	53.88'	26.94'	53.88' N71-46-43.2E
C24	1780.00'	1°38'50"	51.17'	25.59'	51.17' S70-05-16.4W
C25	1800.00'	45°13'12"	149.68'	74.88'	149.64' S75-42-49.7W
C26	550.00'	4°42'36"	45.21'	22.62'	45.20' S26-13-46.6E
C27	550.00'	3°55'01"	37.60'	18.81'	37.59' N21-54-58.1W
C28	200.00'	1°25'48"	4.99'	2.50'	4.99' N20-40-21.9W
C29	200.00'	1°42'15"	40.85'	20.50'	40.78' N27-14-23.4W
C30	842.00'	1°53'12"	79.49'	39.78'	79.45' N09-38-13.0W
C31	842.00'	6°50'54"	100.64'	50.38'	100.58' S03-28-29.2E
C32	48.00'	11°55'03"	9.98'	5.01'	9.97' N84-05-31.0W
C33	48.00'	26°53'18"	22.53'	11.47'	22.32' S64-41-20.6E
C34	500.00'	7°13'30"	63.05'	31.57'	63.01' N47-37-56.9W
C35	500.00'	9°48'23"	85.58'	42.89'	85.47' S39-07-00.7E
C36	500.00'	1°07'19"	9.79'	4.90'	9.79' S33-39-09.9E
C37	855.00'	5°00'14"	74.77'	37.36'	74.65' N30-35-23.9W
C38	855.00'	5°24'43"	80.76'	40.41'	80.73' S25-22-55.6E
C39	855.00'	2°28'15"	36.87'	18.44'	36.87' S21-26-26.6E
C40	1145.00'	2°12'26"	44.11'	22.06'	44.11' S21-19-29.2E
C41	1145.00'	4°00'45"	80.19'	40.11'	80.17' S24-25-08.0E
C42	1145.00'	2°09'34"	43.16'	21.58'	43.15' S27-30-17.6E
C43	260.00'	14°59'48"	68.05'	34.22'	67.86' N16-21-46.0W
C44	260.00'	7°04'37"	32.11'	16.08'	32.09' S27-23-58.7E
C45	115.00'	10°43'47"	21.54'	10.80'	21.50' N23-13-11.2W
C46	950.00'	3°52'45"	64.32'	32.17'	64.31' N26-38-42.0W
C47	950.00'	4°30'00"	74.61'	37.33'	74.60' N22-27-19.1W
C48	1050.00'	0°19'17"	5.89'	2.95'	5.89' N20-21-57.7W
C49	1050.00'	4°23'19"	80.43'	40.23'	80.41' N22-43-16.1W
C50	1050.00'	4°23'19"	80.04'	40.04'	80.02' N27-05-57.2W
C51	1050.00'	3°48'32"	69.80'	34.91'	69.79' N31-11-14.5W
C52	80.00'	20°52'09"	29.14'	14.33'	28.98' N43-31-35.1W
C53	80.00'	24°57'30"	34.85'	17.17'	34.57' N66-26-24.8W
C54	30.00'	40°25'27"	21.17'	11.05'	20.73' N58-42-26.6W
C55	30.00'	4°24'25"	4.23'	2.12'	4.23' S34-27-30.8E
C56	53.00'	58°14'02"	53.87'	29.52'	51.58' N38-35-46.5W
C57	53.00'	44°34'57"	41.24'	21.73'	40.21' S69-03-10.8W
C58	53.00'	11°31'48"	105.02'	80.88'	88.66' S10-00-11.9E
C59	53.00'	60°38'56"	56.10'	31.00'	55.52' S82-54-26.2W
C60	28.00'	38°48'21"	18.96'	9.96'	18.60' N70-38-52.1W
C61	1000.00'	1°53'12"	74.54'	37.34'	74.53' N30-51-12.5W
C62	1000.00'	5°01'51"	87.80'	43.93'	87.78' S26-17-58.9E
C63	1000.00'	3°34'44"	62.47'	31.24'	62.46' S21-59-41.2E
C64	1000.00'	1°22'16"	23.93'	11.97'	23.93' S20-53-27.2E
C65	1000.00'	4°35'52"	80.25'	40.14'	80.22' S23-52-31.3E
C66	1000.00'	2°24'38"	42.07'	21.04'	42.07' S27-25-45.9E
C67	85.00'	11°58'04"	17.75'	8.91'	17.72' S14-50-53.8E
C68	115.00'	8°59'26"	18.05'	9.04'	18.03' S13-21-34.8E
C69	800.00'	1°19'06"	18.41'	9.20'	18.41' S11-46-14.9E
C70	132.00'	8°24'17"	11.24'	5.62'	11.24' S42-14-31.7E
C71	112.00'	8°41'48"	17.00'	8.52'	16.98' N38-35-46.5W
C72	85.00'	7°45'09"	11.50'	5.76'	11.49' S24-42-30.2E
C73	260.00'	6°11'03"	28.06'	14.04'	28.05' S27-50-45.8E

- NOTES:
1. THERE MAY BE ADDITIONAL RESTRICTIONS THAT ARE NOT RECORDED ON THIS PLAN THAT MAY BE FOUND IN THE PUBLIC RECORDS OF THIS COUNTY.
  2. WHERE DRAINAGE AND UTILITY EASEMENTS INTERSECT, DRAINAGE EASEMENTS WILL TAKE PRECEDENCE.
  3. THERE SHALL BE NO TREES, SHRUBS, OR LANDSCAPING PLACED ON WATER AND SEWER EASEMENTS OR DRAINAGE EASEMENTS, EXCEPT AS SHOWN ON THE APPROVED FINAL DEVELOPMENT PLAN AND/OR LANDSCAPE PLAN.
  4. APPROVAL OF LANDSCAPING ON UTILITY EASEMENTS OTHER THAN WATER AND SEWER SHALL BE ONLY WITH APPROVAL OF THE UTILITIES OCCUPYING SAME.
  5. LOT LINES ARE NOT RADIAL UNLESS NOTED (RAD).
  6. THERE SHALL BE NO BUILDING, STRUCTURES, CONSTRUCTION OF ANY KIND, TREES OR SHRUBS PLACED ON WATER MANAGEMENT EASEMENTS AND WATER MANAGEMENT MAINTENANCE EASEMENTS AS SHOWN HEREIN, UNLESS APPROVED, IN PERMIT FORM, BY THE NORTHERN PALM BEACH COUNTY IMPROVEMENT DISTRICT. BEARING BASIS: BEARINGS HEREON ARE RELATIVE TO THE SOUTH LINE OF THE SOUTHEAST ONE-QUARTER OF SECTION 11, TOWNSHIP 42 SOUTH, RANGE 42 EAST, BEING NORTH 88° 36' 29" WEST.
  - 7.

SUBDIVISION # BALLENISLES POD 7  
 BOOK 83 PAGE 54  
 FLOOD MAP # -  
 ZONING -  
 ROAD # -  
 ZIP CODE -  
 PUD NAME City of Palm Beach Gardens