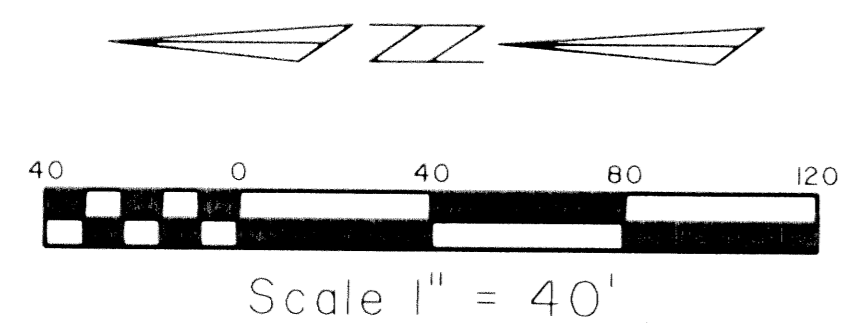
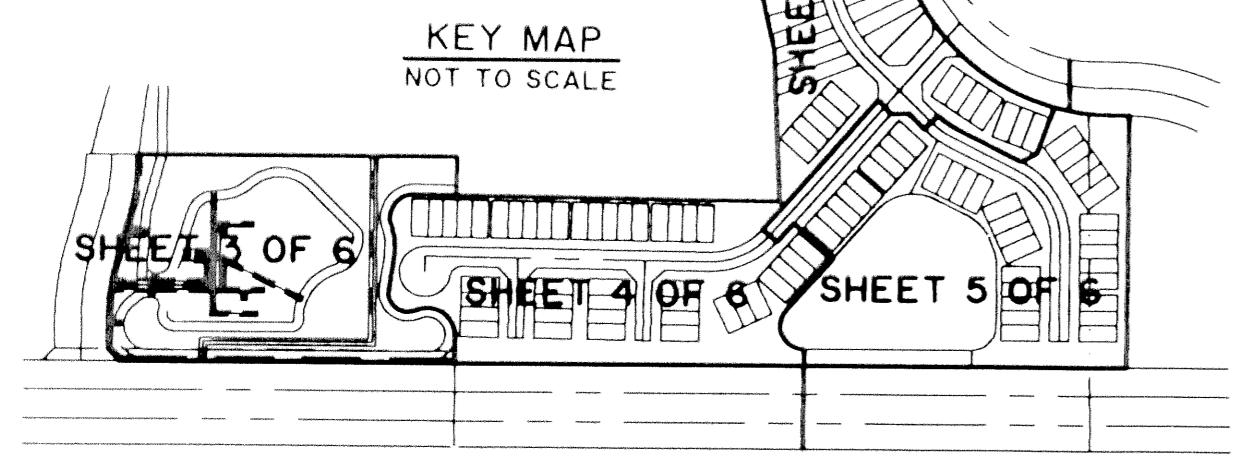


# WELLINGTON'S EDGE PARCEL 78 - PHASE 2, A P.U.D.

BEING THE REPLAT OF TRACTS A AND C AND A PORTION OF TRACT D, WELLINGTON'S EDGE PLAT NO.1 AS RECORDED IN PLAT BOOK 63, PAGES 49 THRU 51, PUBLIC RECORDS OF PALM BEACH COUNTY, FLORIDA AND THE REPLAT OF A PORTION OF BLOCK 18, PALM BEACH FARMS COMPANY PLAT NO. 3, AS RECORDED IN PLAT BOOK 2, PAGES 45 THROUGH 54, PUBLIC RECORDS OF PALM BEACH COUNTY, FLORIDA AND A PORTION OF SECTION 12, TOWNSHIP 44 SOUTH, RANGE 41 EAST, VILLAGE OF WELLINGTON, PALM BEACH COUNTY, FLORIDA.

SHEET 6 OF 6 JULY, 1997

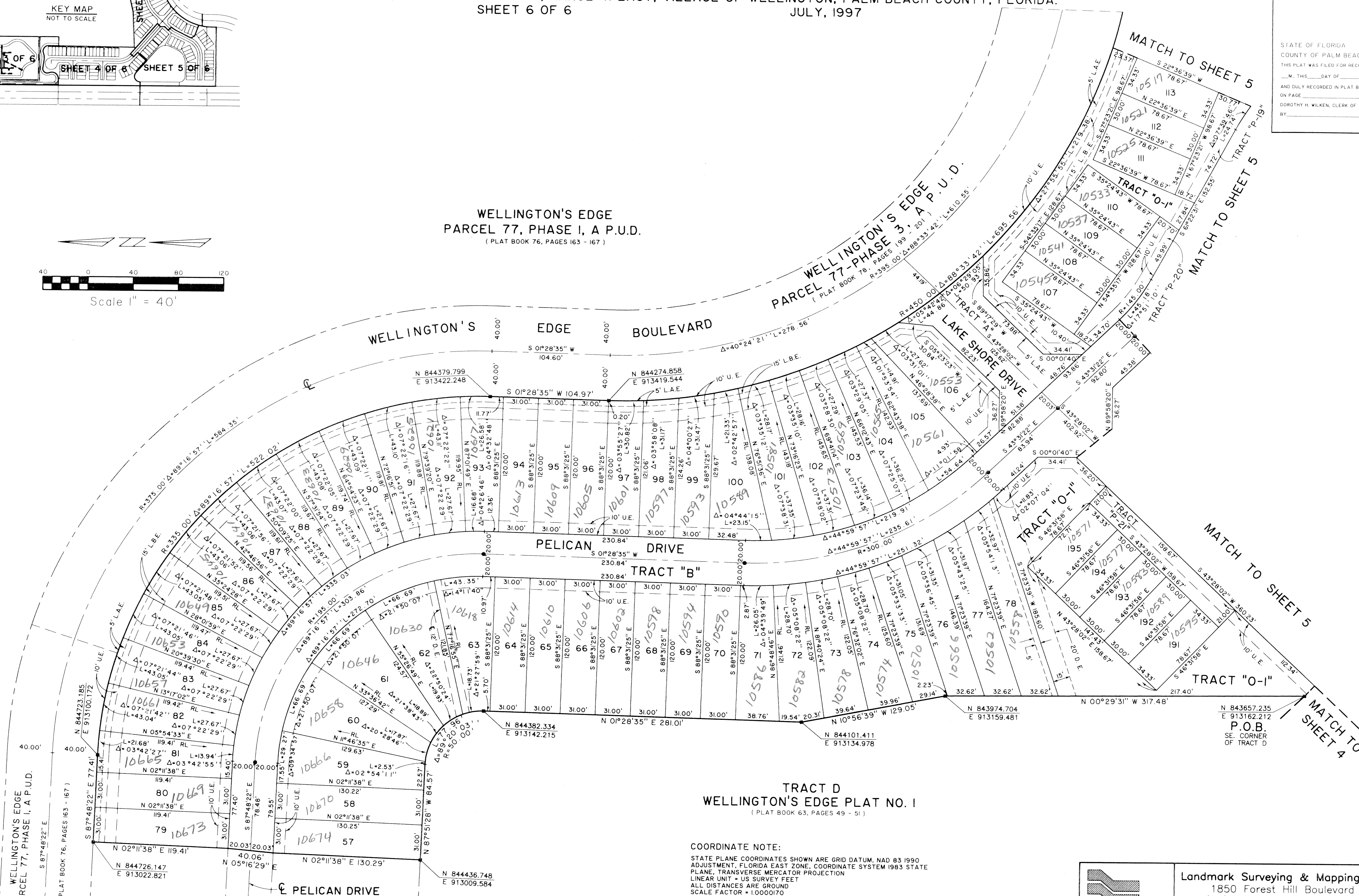
73



WELLINGTON'S EDGE  
PARCEL 77, PHASE I, A P.U.D.  
( PLAT BOOK 76, PAGES 163 - 167 )

WELLINGTON'S EDGE  
PARCEL 77-PHASE 3, A P.U.D.  
( PLAT BOOK 78, PAGES 198 - 201 )

TRACT D  
WELLINGTON'S EDGE PLAT NO. 1  
( PLAT BOOK 63, PAGES 49 - 51 )



COORDINATE NOTE:  
STATE PLANE COORDINATES SHOWN ARE GRID DATUM, NAD 83 1990 ADJUSTMENT, FLORIDA EAST ZONE, COORDINATE SYSTEM 1983 STATE PLANE, TRANSVERSE MERCATOR PROJECTION  
LINEAR UNIT = US SURVEY FEET  
ALL DISTANCES ARE GROUND  
SCALE FACTOR = 1.0000170  
GROUND DISTANCE X SCALE FACTOR = GRID DISTANCE  
S 87°44'41"E (PLAT BEARING) 00°00'03" COUNTERCLOCKWISE ROTATION PLAT TO GRID  
S 87°44'44"E (GRID BEARING)  
THE SOUTH LINE OF SECTION 12, TOWNSHIP 44 SOUTH, RANGE 41 EAST.

STATE OF FLORIDA  
COUNTY OF PALM BEACH  
THIS PLAT WAS FILED FOR RECORD AT  
M. THIS DAY OF 19  
AND DULY RECORDED IN PLAT BOOK NO.  
ON PAGE  
DOROTHY H. WILKEN, CLERK OF THE CIRCUIT COURT  
BY

SUBDIVISION \* Parcel 78, Phase 2  
BOOK 63 PAGE 73  
FLOOD ZONE B  
FLOOD MAP # 100B  
ZONING RTS/ISE  
# 80-141  
ZIP CODE 33414  
P.U.D. NAME Village of Wellington

Landmark Surveying & Mapping Inc.  
1850 Forest Hill Boulevard  
Ph. (561) 433-5405 Suite 100 W.P.B. Florida

WELLINGTON'S EDGE  
PARCEL 78 - PHASE 2, A P.U.D.