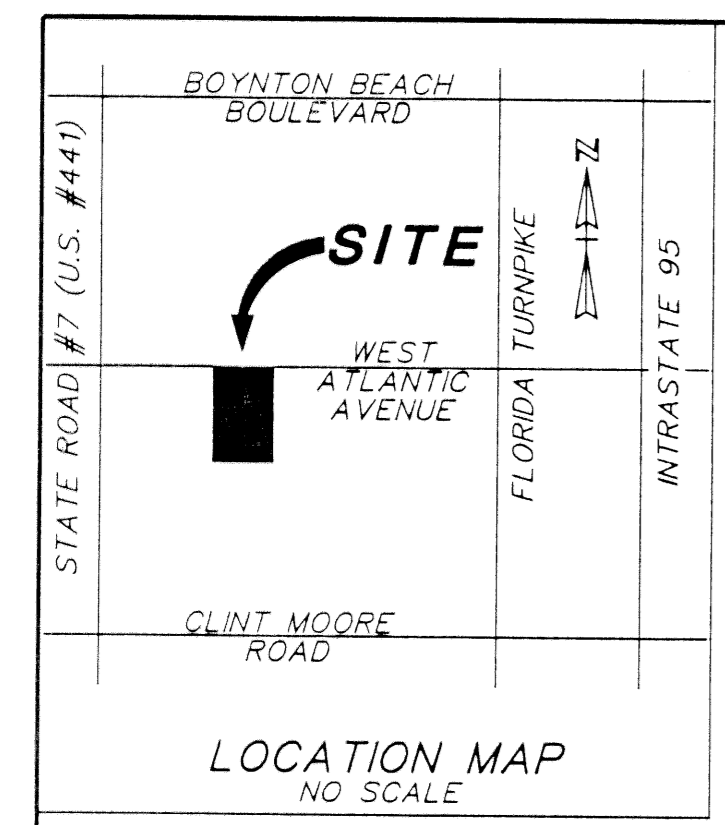
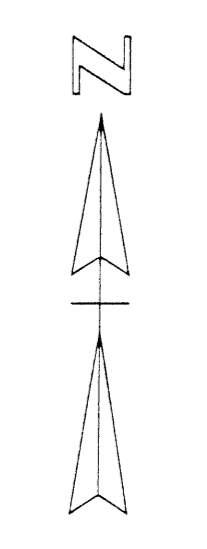
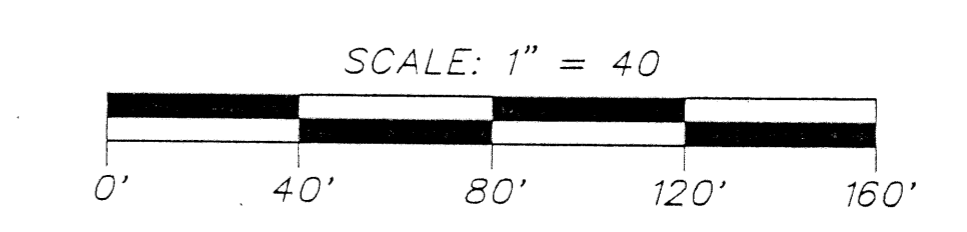


OUR LADY QUEEN OF PEACE MISSION

BEING A PORTION OF SECTION 19, TOWNSHIP 46 SOUTH, RANGE 42 EAST, PALM BEACH COUNTY, FLORIDA

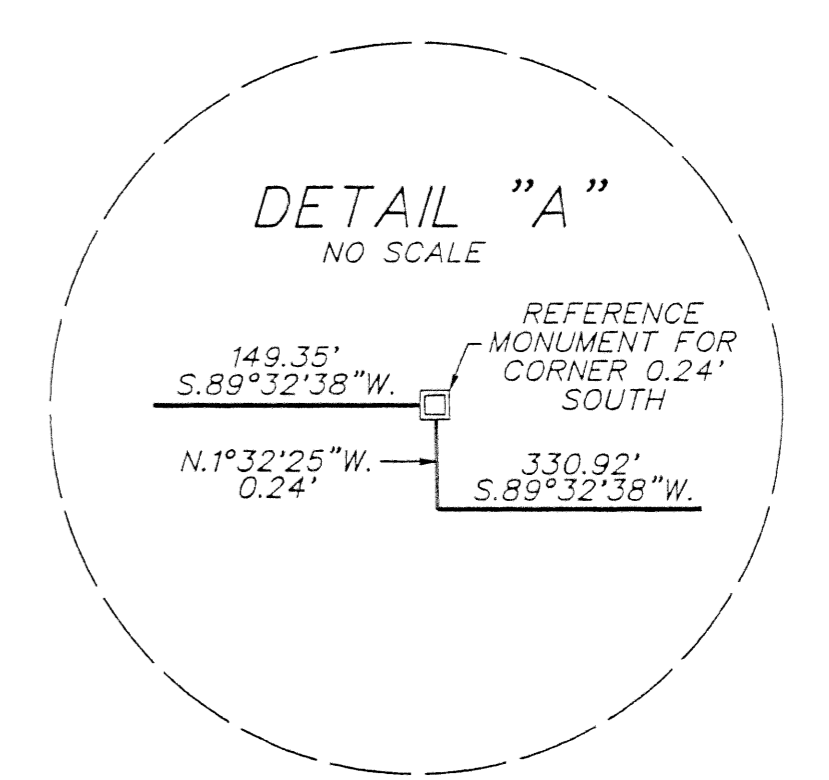
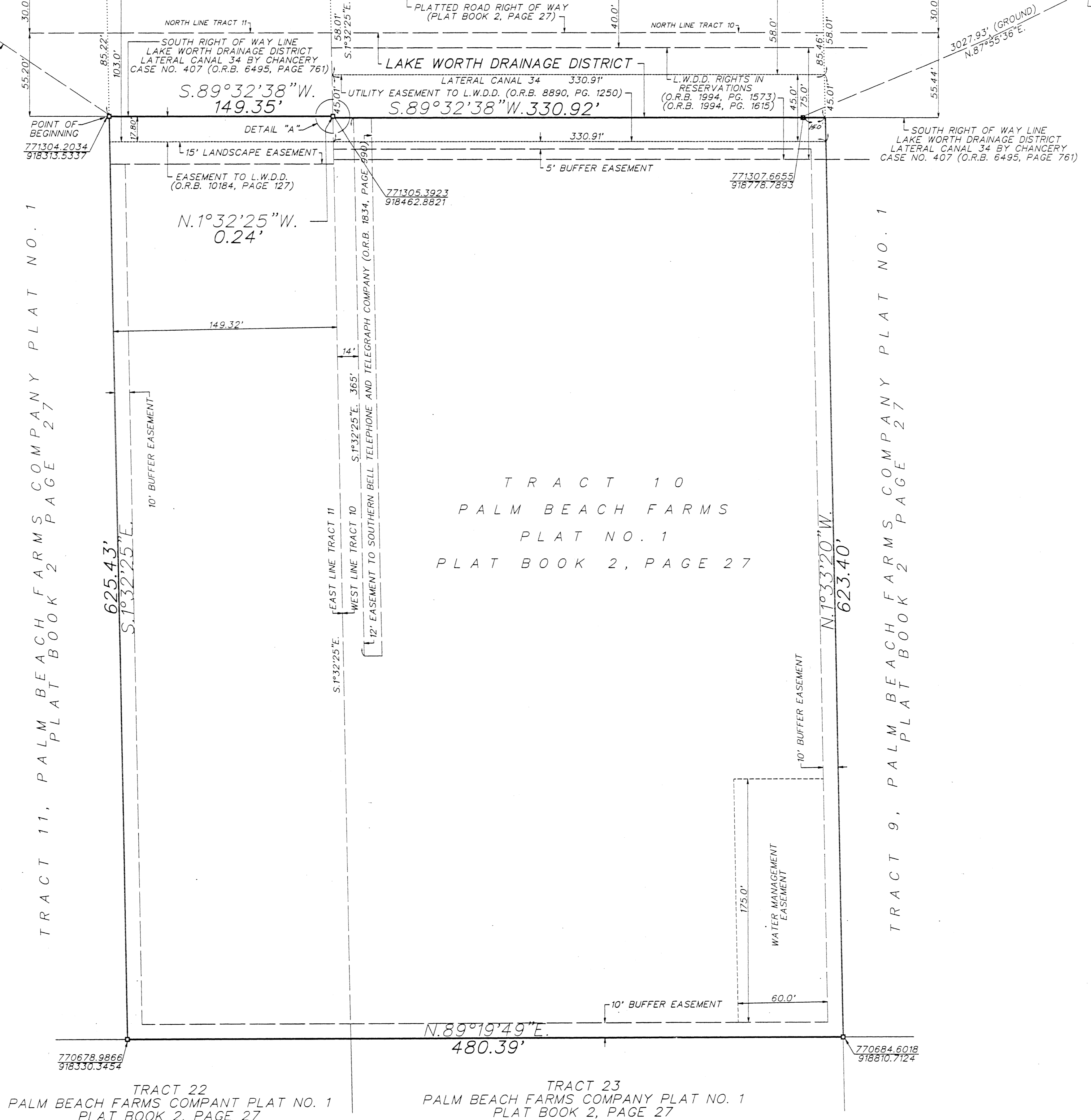
SHEET 2 OF 2



NORTHWEST CORNER SECTION 19/46/42 FOUND BRASS DISK IN CONC (NO NUMBERS) & POINT OF COMMENCEMENT

NORTHEAST CORNER SECTION 19/46/42 FOUND PALM BEACH COUNTY BRASS DISK

WEST ATLANTIC AVENUE (STATE ROAD 806) 480.26'



TRACT 10
PALM BEACH FARMS
PLAT NO. 1
PLAT BOOK 2, PAGE 27

TRACT 22
PALM BEACH FARMS COMPANT PLAT NO. 1
PLAT BOOK 2, PAGE 27

TRACT 23
PALM BEACH FARMS COMPANY PLAT NO. 1
PLAT BOOK 2, PAGE 27

- NOTES:
- ☒ = CENTERLINE
 - = SET P.R.M. (PERMANENT REFERENCE MONUMENT #5708)
 - O.R.B. = OFFICIAL RECORD BOOK
 - L.W.D.D. = LAKE WORTH DRAINAGE DISTRICT
 - SECTION 19/46/42 = SECTION 19, TOWNSHIP 46 SOUTH, RANGE 42 EAST

SUBDIVISION - Our Lady Queen of Peace Mission
BOOK - 83
FLOOD ZONE - B
QUAD - 5A
SE -
PUD NAME - Our Lady Queen of Peace Mission
PAGE - 91
FLOOD MAP # - 3154
ZONING - IL
ZIP CODE - 33496

O'BRIEN, SUITER & O'BRIEN, INC.
LAND SURVEYORS
CERTIFICATE OF AUTHORIZATION #LB353
SURVEYOR AND MAPPER IN RESPONSIBLE CHARGE: JOHN N. SUITER
2601 NORTH FEDERAL HIGHWAY, DELRAY BEACH, FLORIDA 33483
(561) 276-4501 732-3279 FAX 276-2390

DATE OF SURVEY	OCT. 1997	SCALE:	1" = 40'
FIELD BOOK	PAGE NO. D251	ORDER NO.:	97-213d