

# AUTONATION OF PALM BEACH

5000-273

94

A REPLAT OF A PORTION OF TRACT 1 IN BLOCK 4 OF 'THE PALM BEACH FARMS CO. PLAT NO. 3', AS RECORDED IN PLAT BOOK 2 AT PAGES 45 THROUGH 54, TOGETHER WITH A PORTION OF TRACT 28 IN BLOCK 1 OF 'THE PALM BEACH FARMS CO. PLAT NO. 9', AS RECORDED IN PLAT BOOK 5 AT PAGE 58, BOTH OF THE PUBLIC RECORDS OF PALM BEACH COUNTY, FLORIDA AND TOGETHER WITH A SUBDIVISION OF THAT PORTION OF THE UNPLATTED LANDS IN THE NORTHEAST ONE-QUARTER LYING SOUTH OF OKEECHOBEE BOULEVARD AND WEST OF FLORIDA'S TURNPIKE, PALM BEACH COUNTY, FLORIDA SITUATE, LYING AND BEING IN SECTION 27, TOWNSHIP 43 SOUTH, RANGE 42 EAST

IN 4 SHEETS  
PREPARED BY:

**PBSJ**

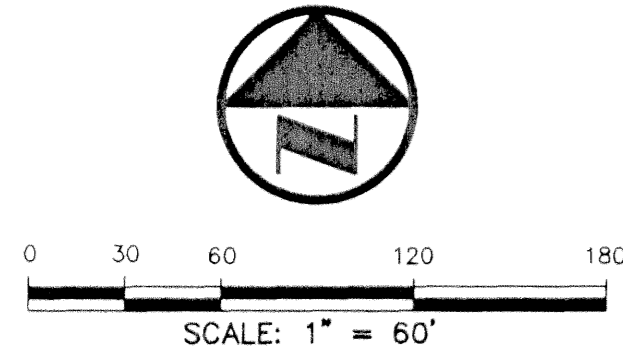
**POST, BUCKLEY, SCHUH & JERNIGAN, INC.**

FLORIDA CERTIFICATE OF AUTHORIZATION NUMBER LB 24  
2001 N.W. 107th AVENUE  
MIAMI, FLORIDA 33172-2507  
(305) 592-7275

JULY 1998

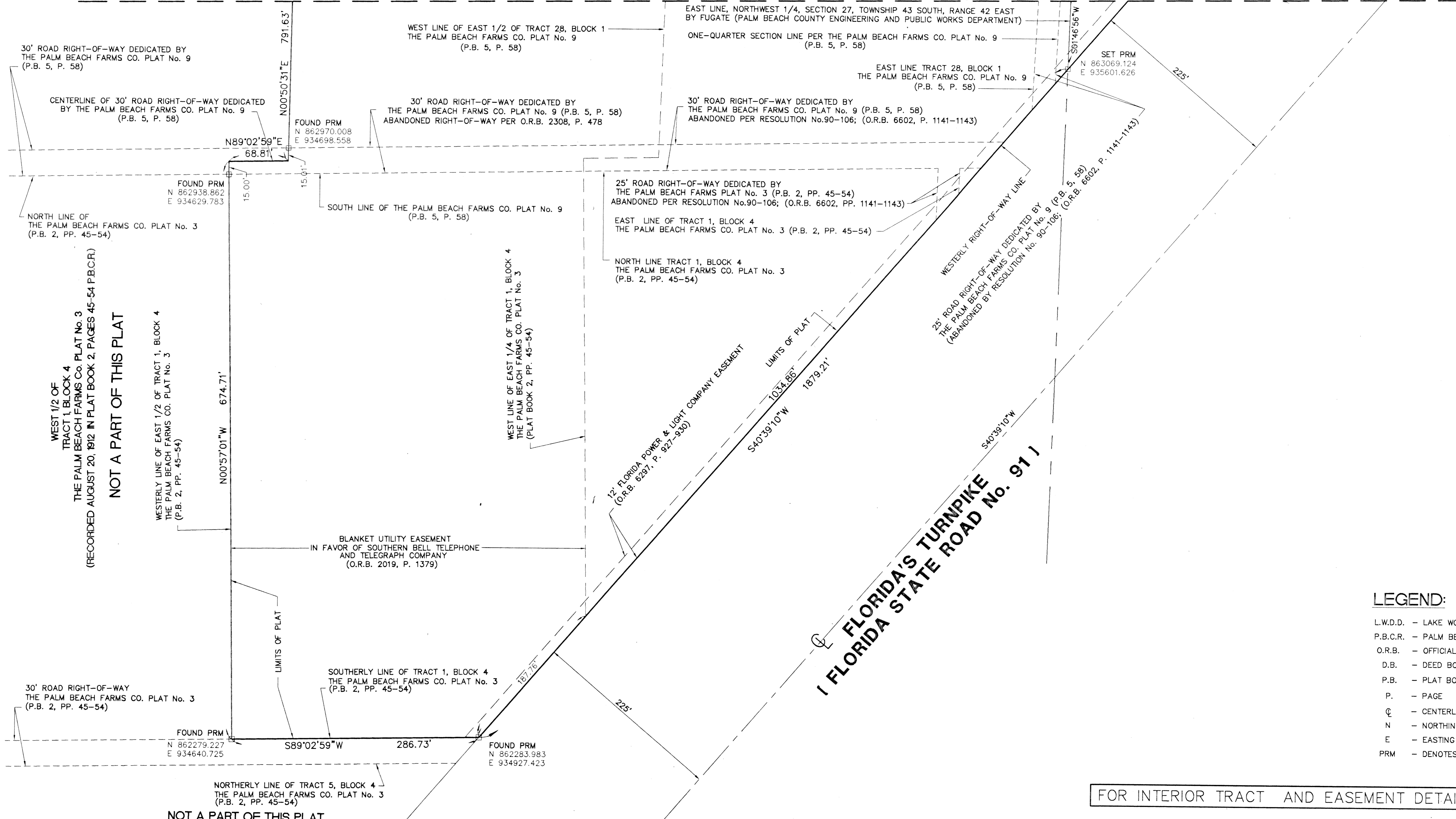
SCALE AS SHOWN SHEET 3 OF 4 SHEETS

STATE OF FLORIDA )  
COUNTY OF PALM BEACH ) SS  
THIS PLAT WAS FILED FOR RECORD  
AT \_\_\_\_\_ THIS \_\_\_\_\_  
DAY OF \_\_\_\_\_ 1998  
AND DULY RECORDED IN PLAT BOOK  
\_\_\_\_\_ ON PAGES \_\_\_\_\_  
THROUGH \_\_\_\_\_  
DOROTHY H. WILKEN  
CLERK OF THE CIRCUIT COURT  
BY: \_\_\_\_\_  
DEPUTY CLERK



**MATCH LINE A**  
SEE SHEET 2 OF 4

**MATCH LINE A**  
SEE SHEET 2 OF 4



- LEGEND:**
- L.W.D.D. - LAKE WORTH DRAINAGE DISTRICT
  - P.B.C.R. - PALM BEACH COUNTY RECORDS
  - O.R.B. - OFFICIAL RECORDS BOOK
  - D.B. - DEED BOOK
  - P.B. - PLAT BOOK
  - P. - PAGE
  - ⊕ - CENTERLINE
  - N - NORTHING
  - E - EASTING
  - PRM - DENOTES PERMANENT REFERENCE MONUMENT (P.R.M.)

FOR INTERIOR TRACT AND EASEMENT DETAILS, SEE SHEET 4 OF 4

SUBDIVISION - Autonation of Palm Beach  
 BOOK 88 FLOOD MAP # 15044  
 FLOOD ZONE B ZONING MURD  
 SEC 31 ZIP CODE 33417  
 SE 95-22  
 PUD NAME Autonation of Palm Beach  
 1A2  
 810

MET-DWG 20796 13824