

LOXAHATCHEE LAKES

LOTS 14 AND 15

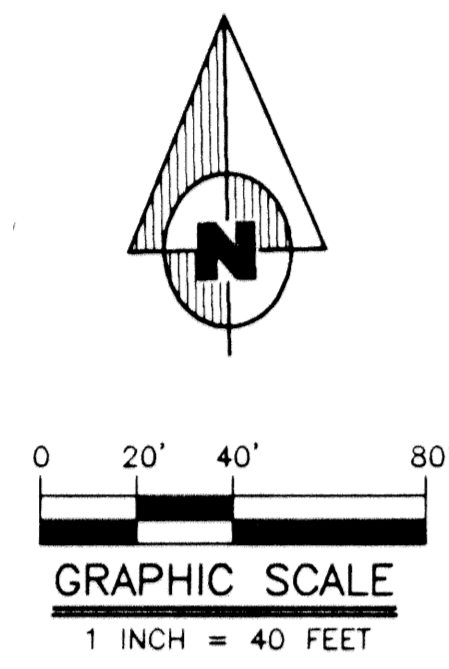
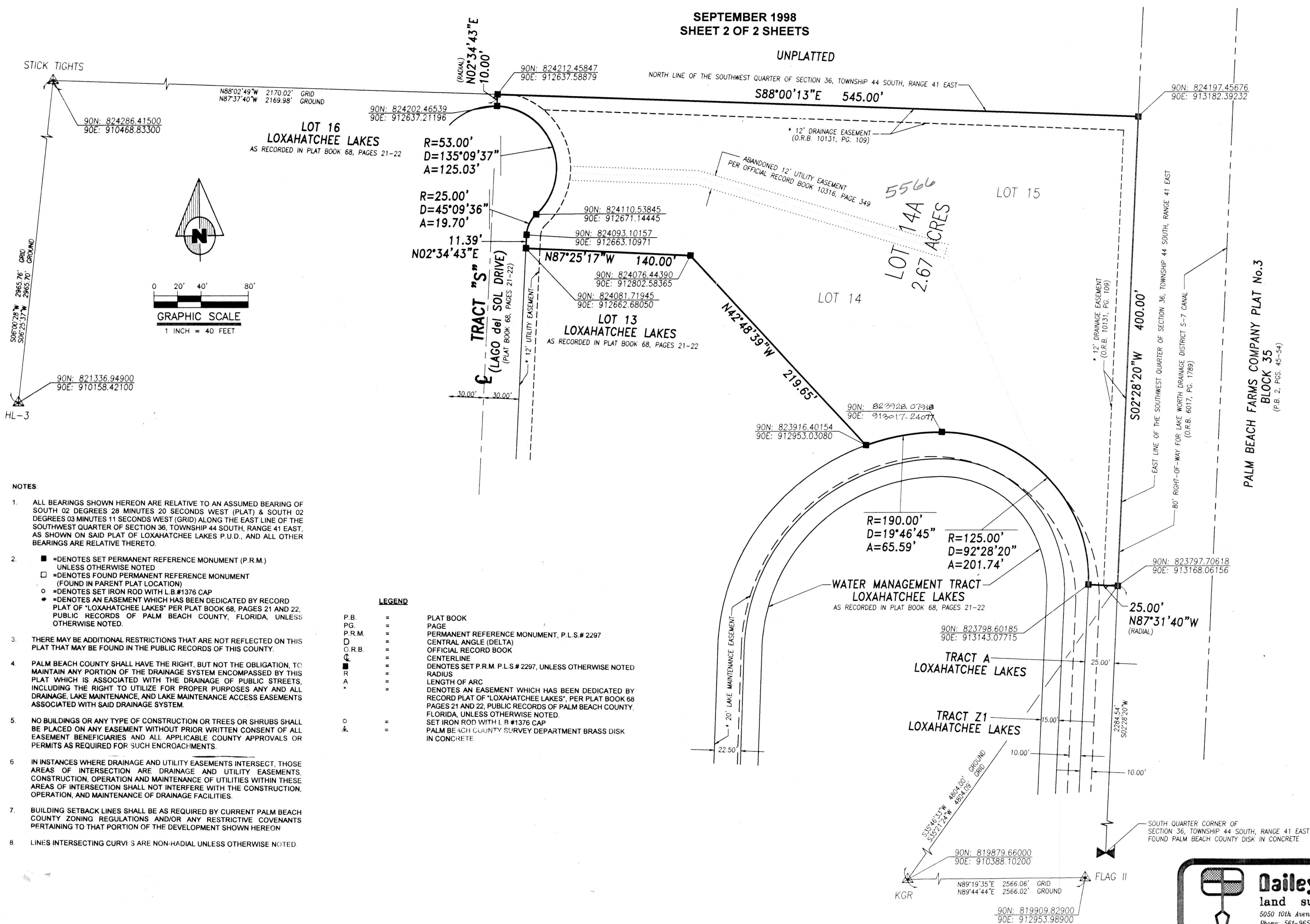
BEING A REPLAT OF LOTS 14 AND 15, OF THE PLAT OF LOXAHATCHEE LAKES A P.U.D.,
AS RECORDED IN PLAT BOOK 68, PAGES 21 AND 22,
OF THE PUBLIC RECORDS OF PALM BEACH COUNTY, FLORIDA,
LYING IN SECTION 36, TOWNSHIP 44 SOUTH, RANGE 41 EAST,
PALM BEACH COUNTY, FLORIDA

0502-002

101

SEPTEMBER 1998
SHEET 2 OF 2 SHEETS

UNPLATTED



- NOTES**
- ALL BEARINGS SHOWN HEREON ARE RELATIVE TO AN ASSUMED BEARING OF SOUTH 02 DEGREES 28 MINUTES 20 SECONDS WEST (PLAT) & SOUTH 02 DEGREES 03 MINUTES 11 SECONDS WEST (GRID) ALONG THE EAST LINE OF THE SOUTHWEST QUARTER OF SECTION 36, TOWNSHIP 44 SOUTH, RANGE 41 EAST, AS SHOWN ON SAID PLAT OF LOXAHATCHEE LAKES P.U.D., AND ALL OTHER BEARINGS ARE RELATIVE THERETO.
 - DENOTES SET PERMANENT REFERENCE MONUMENT (P.R.M.) UNLESS OTHERWISE NOTED
 - DENOTES FOUND PERMANENT REFERENCE MONUMENT (FOUND IN PARENT PLAT LOCATION)
 - DENOTES SET IRON ROD WITH L.B.#1376 CAP
 - ◆ DENOTES AN EASEMENT WHICH HAS BEEN DEDICATED BY RECORD PLAT OF "LOXAHATCHEE LAKES" PER PLAT BOOK 68, PAGES 21 AND 22, PUBLIC RECORDS OF PALM BEACH COUNTY, FLORIDA, UNLESS OTHERWISE NOTED.
 - THERE MAY BE ADDITIONAL RESTRICTIONS THAT ARE NOT REFLECTED ON THIS PLAT THAT MAY BE FOUND IN THE PUBLIC RECORDS OF THIS COUNTY.
 - PALM BEACH COUNTY SHALL HAVE THE RIGHT, BUT NOT THE OBLIGATION, TO MAINTAIN ANY PORTION OF THE DRAINAGE SYSTEM ENCOMPASSED BY THIS PLAT WHICH IS ASSOCIATED WITH THE DRAINAGE OF PUBLIC STREETS INCLUDING THE RIGHT TO UTILIZE FOR PROPER PURPOSES ANY AND ALL DRAINAGE, LAKE MAINTENANCE, AND LAKE MAINTENANCE ACCESS EASEMENTS ASSOCIATED WITH SAID DRAINAGE SYSTEM.
 - NO BUILDINGS OR ANY TYPE OF CONSTRUCTION OR TREES OR SHRUBS SHALL BE PLACED ON ANY EASEMENT WITHOUT PRIOR WRITTEN CONSENT OF ALL EASEMENT BENEFICIARIES AND ALL APPLICABLE COUNTY APPROVALS OR PERMITS AS REQUIRED FOR SUCH ENCROACHMENTS.
 - IN INSTANCES WHERE DRAINAGE AND UTILITY EASEMENTS INTERSECT, THOSE AREAS OF INTERSECTION ARE DRAINAGE AND UTILITY EASEMENTS. CONSTRUCTION, OPERATION AND MAINTENANCE OF UTILITIES WITHIN THESE AREAS OF INTERSECTION SHALL NOT INTERFERE WITH THE CONSTRUCTION, OPERATION, AND MAINTENANCE OF DRAINAGE FACILITIES.
 - BUILDING SETBACK LINES SHALL BE AS REQUIRED BY CURRENT PALM BEACH COUNTY ZONING REGULATIONS AND/OR ANY RESTRICTIVE COVENANTS PERTAINING TO THAT PORTION OF THE DEVELOPMENT SHOWN HEREON
 - LINES INTERSECTING CURVES ARE NON-RADIAL UNLESS OTHERWISE NOTED

LEGEND

P.B.	=	PLAT BOOK
PG.	=	PAGE
P.R.M.	=	PERMANENT REFERENCE MONUMENT, P.L.S.# 2297
D	=	CENTRAL ANGLE (DELTA)
O.R.B.	=	OFFICIAL RECORD BOOK
C	=	CENTERLINE
■	=	DENOTES SET P.R.M. P.L.S.# 2297, UNLESS OTHERWISE NOTED
R	=	RADIUS
A	=	LENGTH OF ARC
◆	=	DENOTES AN EASEMENT WHICH HAS BEEN DEDICATED BY RECORD PLAT OF "LOXAHATCHEE LAKES", PER PLAT BOOK 68 PAGES 21 AND 22, PUBLIC RECORDS OF PALM BEACH COUNTY, FLORIDA, UNLESS OTHERWISE NOTED.
○	=	SET IRON ROD WITH L.B.#1376 CAP
◆	=	PALM BEACH COUNTY SURVEY DEPARTMENT BRASS DISK IN CONCRETE

SUBMITTER: PAGE 1010
 BOOK: 68
 FLOOD ZONE: 0
 QUAD: 03
 SE: 88-80
 TAZ: LAGO DEL SOL
 PUD NAME: LAGO DEL SOL
 ZIP CODE: 33467

Dailey-Fotony, inc.
 land surveyors - planners
 5050 10th Avenue North Suite A - Lake Worth, FL 33463-2062
 Phone: 561-965-8787 Fax: 561-965-8963