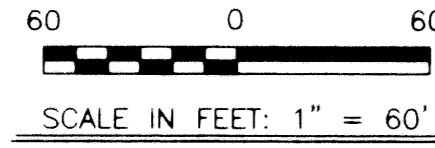
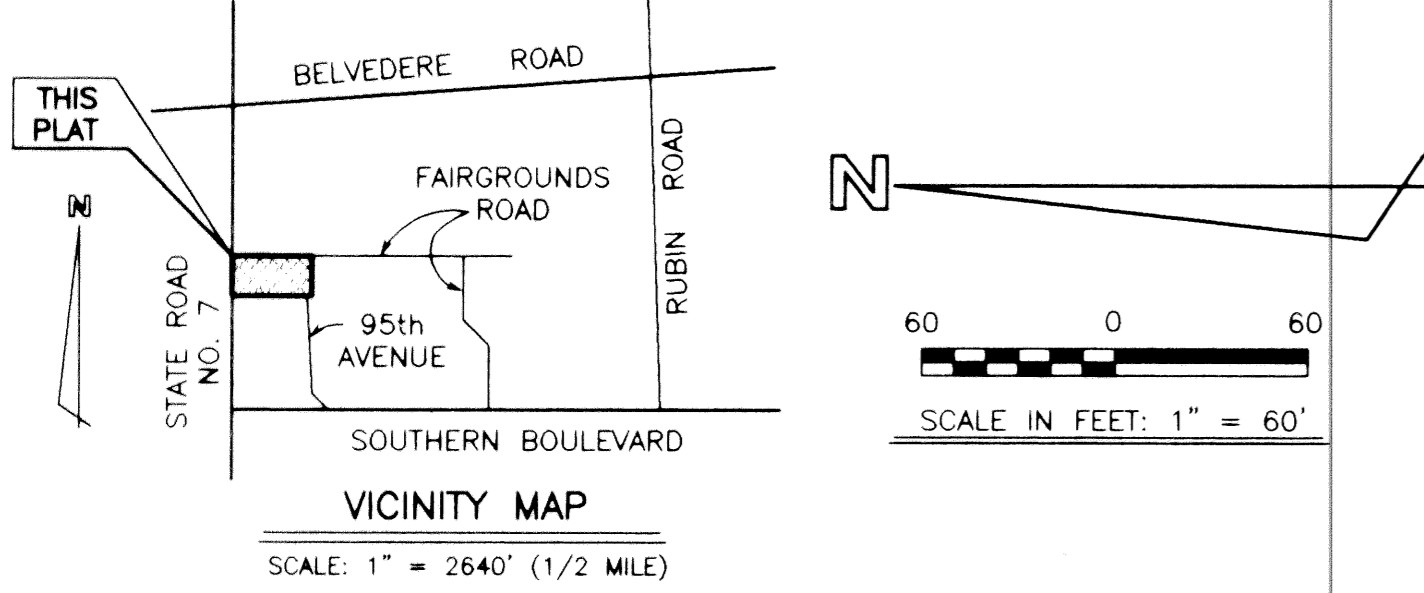


# CORAL SKY PLAZA

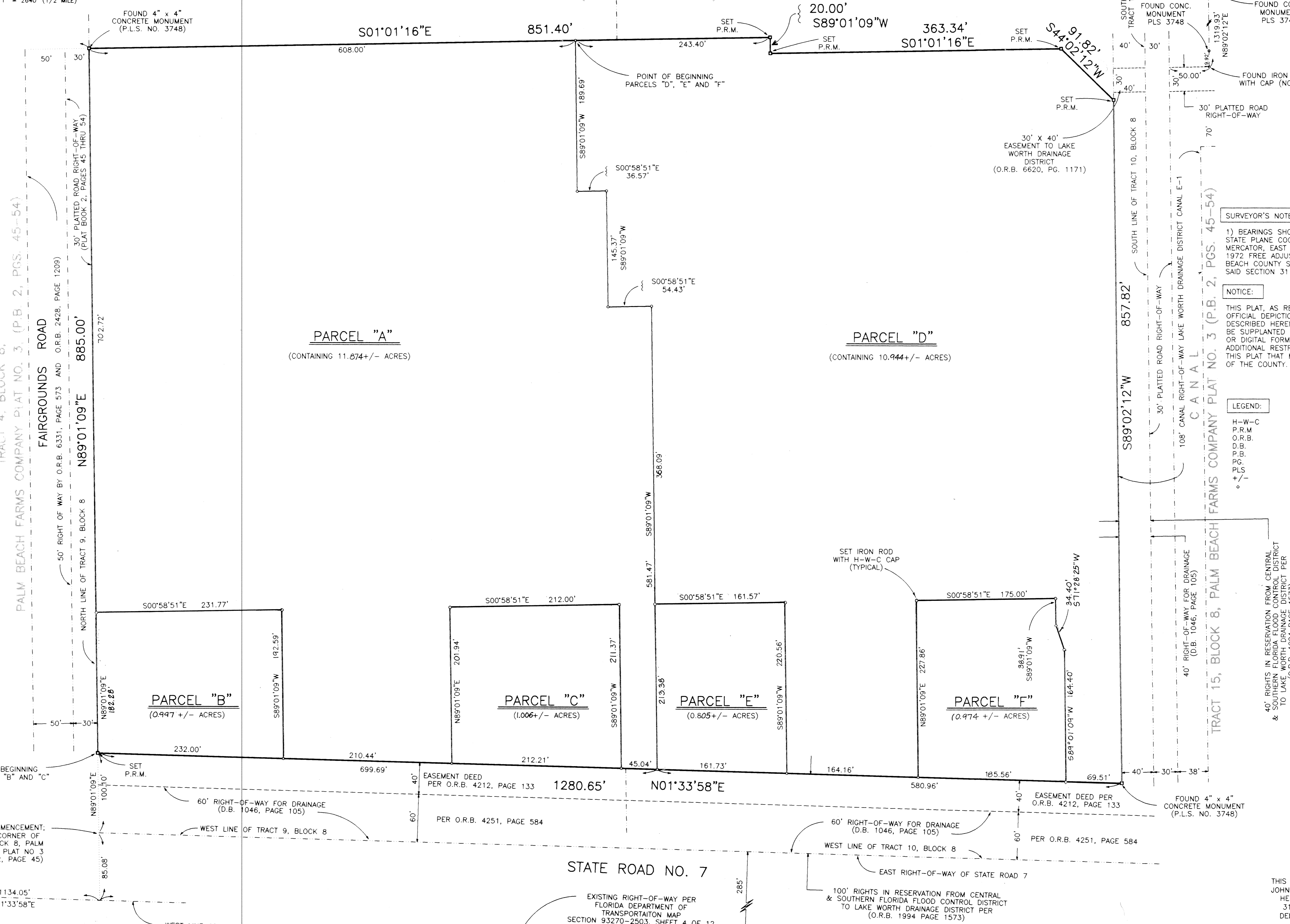
A REPLAT OF A PORTION OF TRACTS 8, 9, 10 AND 11, BLOCK 8,  
PALM BEACH FARMS COMPANY PLAT NO. 3, (PLAT BOOK 2, PAGES 45 THROUGH 54)  
VILLAGE OF ROYAL PALM BEACH, PALM BEACH COUNTY, FLORIDA  
SHEET 2 OF 2 SHEETS



TRACT 8, BLOCK 8

PALM BEACH FARMS COMPANY  
PLAT NO. 3 (P.B. 2, PGS. 45-54)

TRACT 11, BLOCK 8



**SURVEYOR'S NOTES:**

1) BEARINGS SHOWN HEREON CONFORM TO THE FLORIDA STATE PLANE COORDINATE SYSTEM, TRANSVERSE MERCATOR, EAST ZONE, POLYCONIC PROJECTION, 1972 FREE ADJUSTMENT AS DETERMINED BY THE PALM BEACH COUNTY SURVEY SECTION. THE WEST LINE OF SAID SECTION 31 BEARS NORTH 01°33'58" EAST.

**NOTICE:**

THIS PLAT, AS RECORDED IN GRAPHIC FORM, IS THE OFFICIAL DEPICTION OF THE SUBDIVIDED LANDS DESCRIBED HEREIN AND WILL IN NO CIRCUMSTANCES BE SUPPLANTED IN AUTHORITY BY ANY OTHER GRAPHICS OR DIGITAL FORM OF THE PLAT. THERE MAY BE ADDITIONAL RESTRICTIONS THAT ARE NOT RECORDED ON THIS PLAT THAT MAY BE FOUND IN THE PUBLIC RECORDS OF THE COUNTY.

**LEGEND:**

- H-W-C HELLER-WEAVER AND CATO, INC.
- P.R.M. PERMANENT REFERENCE MONUMENT
- O.R.B. OFFICIAL RECORDS BOOK
- D.B. DEED BOOK
- P.B. PLAT BOOK
- PG. PAGE
- PLS. PROFESSIONAL LAND SURVEYOR
- +/- MORE OR LESS
- ° SET IRON ROD WITH H-W-C CAP

THE RECIPROCAL EASEMENT AGREEMENT IS RECORDED IN OFFICIAL RECORD BOOK 10649, PAGE 510

40' RIGHTS IN RESERVATION FROM CENTRAL & SOUTHERN FLORIDA FLOOD CONTROL DISTRICT TO LAKE WORTH DRAINAGE DISTRICT PER (O.R.B. 1994 PAGE 1573)

SUBDIVISION Coral Sky Plaza  
 BOOK 03 PAGE 121  
 FLOOD MAP # -  
 ZONING -  
 QUAD # -  
 SE TAZ 821  
 PUB NAME Village of Royal Palm Beach



THIS INSTRUMENT WAS PREPARED BY:  
JOHN D. WEAVER IN THE OFFICES OF  
HELLER-WEAVER AND CATO, INC.  
310 S.E. 1st STREET, SUITE 4,  
DELRAY BEACH, FLORIDA 33483  
(561) 243-8700