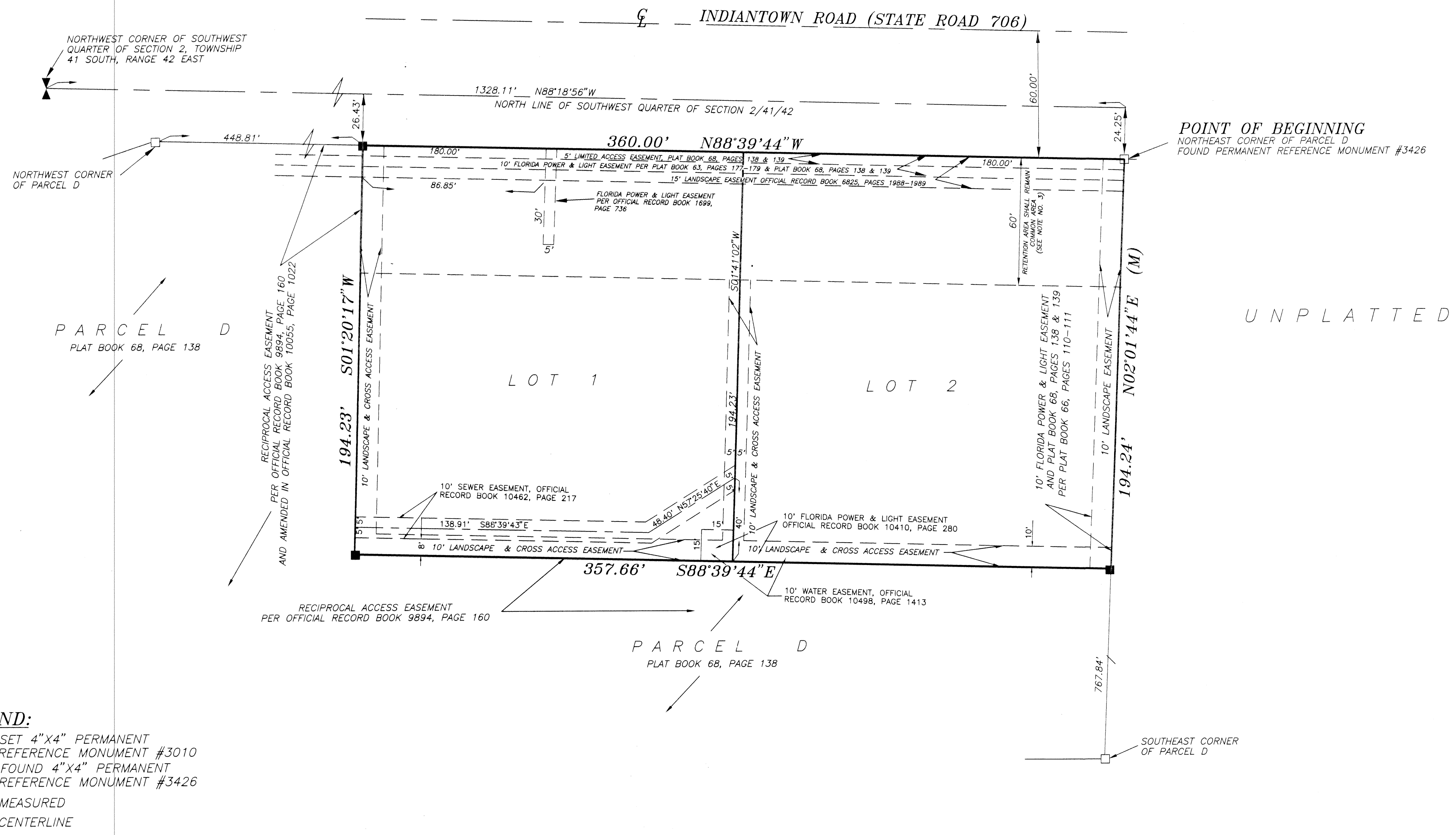
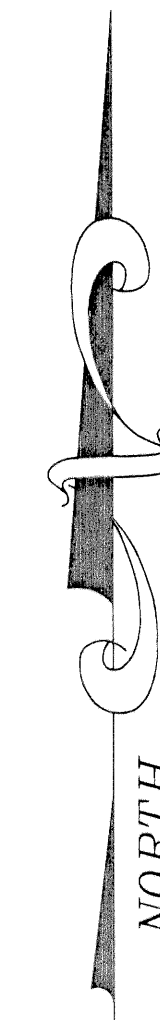
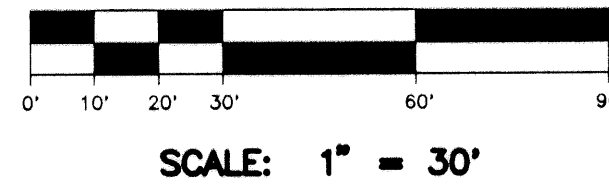


MAPLEWOOD CENTER, PLAT NO. 1 REPLAT OF A PORTION OF PARCEL D

AS RECORDED IN PLAT BOOK 68, PAGES 138 AND 139,
PUBLIC RECORDS OF PALM BEACH COUNTY, FLORIDA,
LYING IN SECTION 2, TOWNSHIP 41 SOUTH, RANGE 42 EAST, TOWN OF JUPITER

AUGUST, 1998
SHEET 2 OF 2



- LEGEND:**
- = SET 4"X4" PERMANENT REFERENCE MONUMENT #3010
 - = FOUND 4"X4" PERMANENT REFERENCE MONUMENT #3426
 - (M) = MEASURED
 - ℄ = CENTERLINE

THIS INSTRUMENT WAS PREPARED BY:
JOHN J. DEDMAN
JUPITER SURVEYING, INC.
609 N. Heppburn Ave, Suite 205
Jupiter, Florida 33458
561-744-4594