

SMITH CORNER

LYING IN SECTION 23, TOWNSHIP 42 SOUTH, RANGE 42 EAST,
CITY OF PALM BEACH GARDENS,
PALM BEACH COUNTY, FLORIDA

OCTOBER 1998

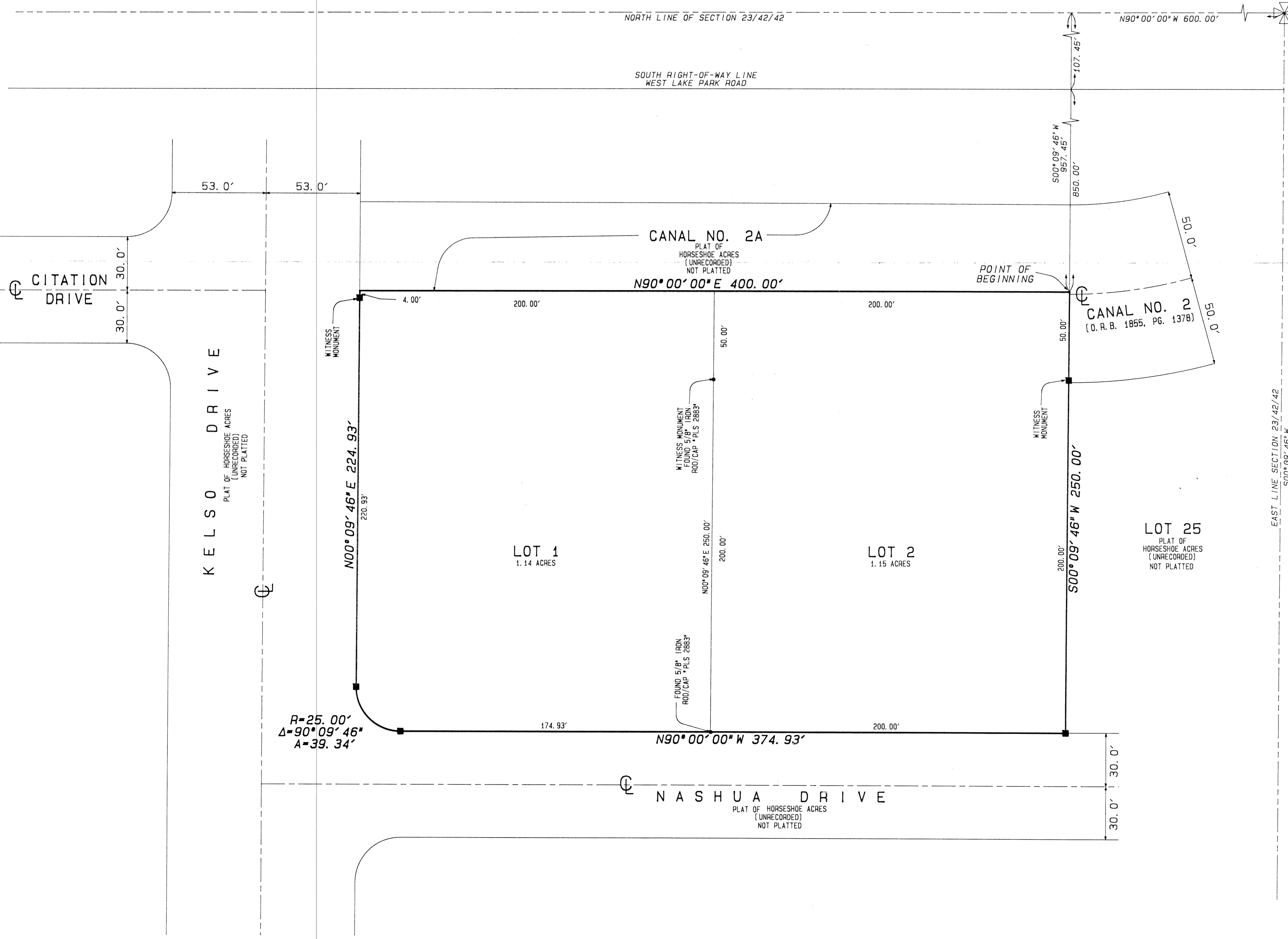
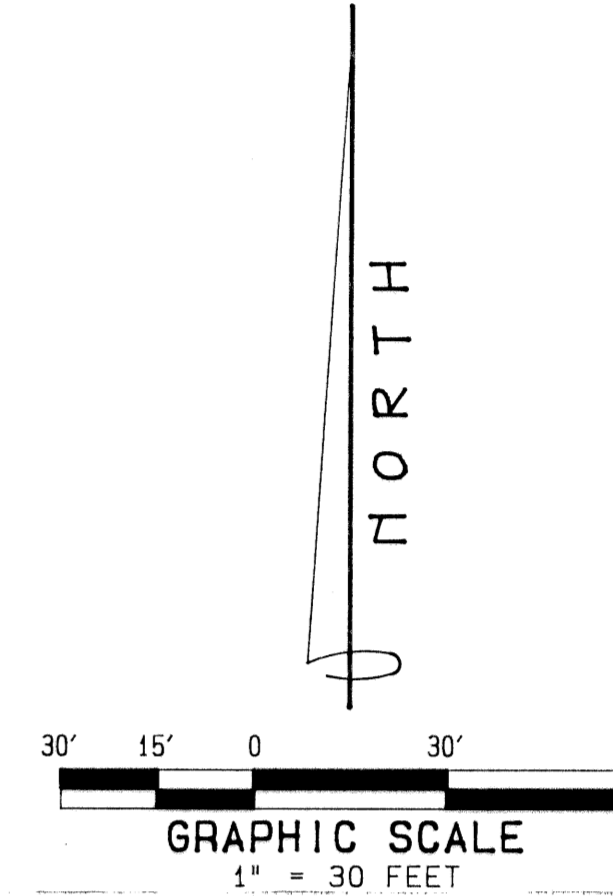
SHEET 2 OF 2

POINT OF COMMENCEMENT
NORTHEAST CORNER
SECTION 23/42/42
FOUND PALM BEACH COUNTY
BRASS DISK

NORTH LINE OF SECTION 23/42/42

N90°00'00"W 600.00'

SOUTH RIGHT-OF-WAY LINE
WEST LAKE PARK ROAD



NOTES

1. BEARINGS SHOWN HEREON ARE RELATIVE TO THE NORTH LINE OF SECTION 23, TOWNSHIP 42 SOUTH, RANGE 42 EAST, PALM BEACH COUNTY, FLORIDA HAVING AN ASSUMED BEARING OF NORTH 90°00'00" WEST.
2. NOTICE: THIS PLAT, AS RECORDED IN ITS GRAPHIC FORM, IS THE OFFICIAL DEPICTION OF THE SUBDIVIDED LANDS DESCRIBED HEREIN AND WILL IN NO CIRCUMSTANCES BE SUPPLANTED IN AUTHORITY BY ANY OTHER GRAPHIC OR DIGITAL FORM OF THE PLAT, WHETHER GRAPHIC OR DIGITAL. THERE MAY BE ADDITIONAL RESTRICTIONS THAT ARE NOT RECORDED ON THIS PLAT THAT MAY BE FOUND IN THE PUBLIC RECORDS OF THIS COUNTY.

LEGEND

- - SET PERMANENT REFERENCE MONUMENT 'LS 3335'
- ⊕ - CENTERLINE
- ORB - OFFICIAL RECORD BOOK
- PG - PAGE
- SQ. FT. - SQUARE FEET

R=25.00'
Δ=90°09'46"
A=39.34'

THIS INSTRUMENT WAS PREPARED BY RICHARD A. MIXON,
IN AND FOR THE OFFICE OF MIXON LAND SURVEYING, INC.,
311 WEST INDIANTOWN ROAD, SUITE 3, JUPITER, FLORIDA 33458
MIXON LAND SURVEYING, INC.
311 WEST INDIANTOWN ROAD, SUITE 3
JUPITER, FLORIDA 33458
(561) 747-6046
CERTIFICATE NO. LB 4199

SMITH CORNER